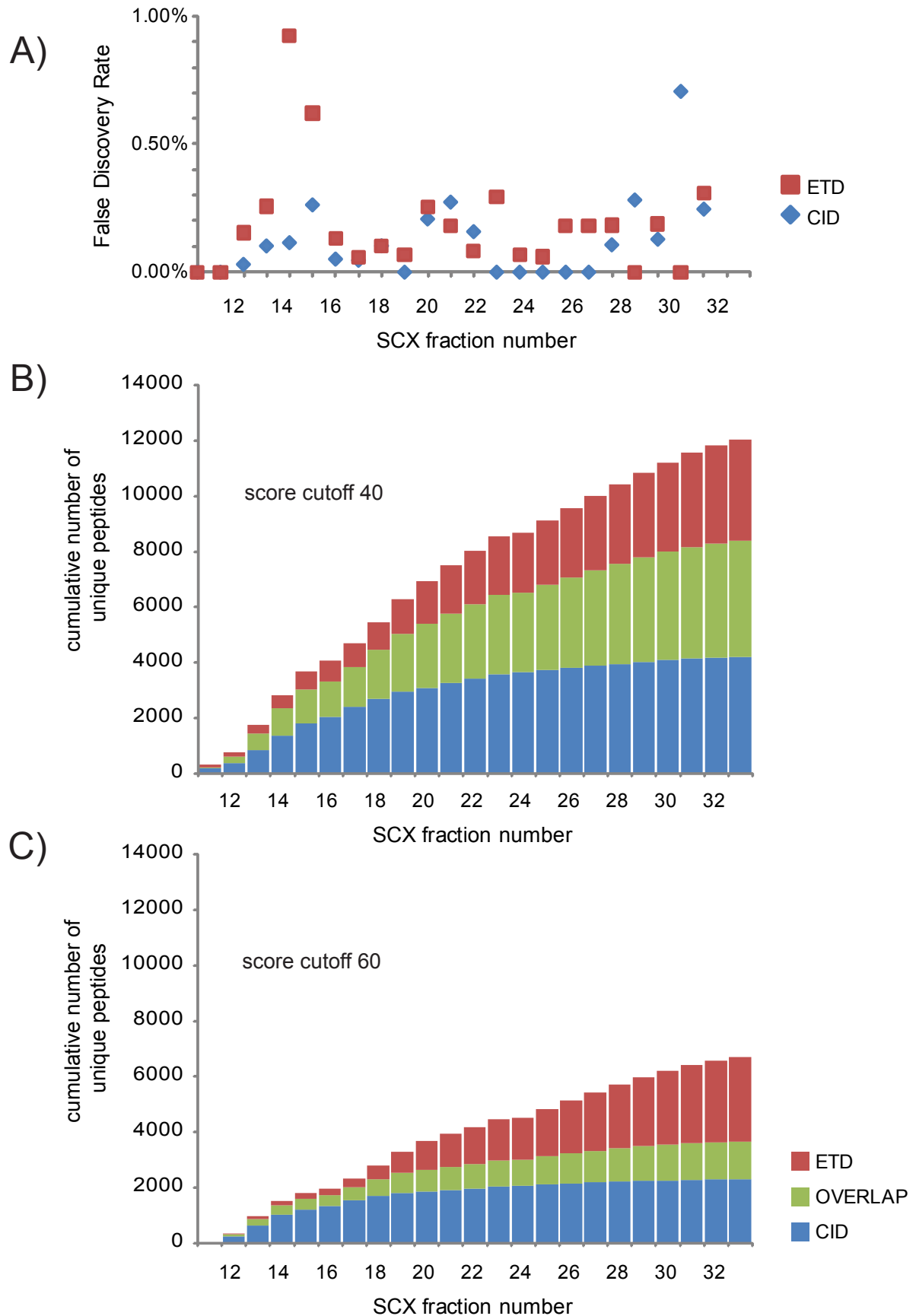
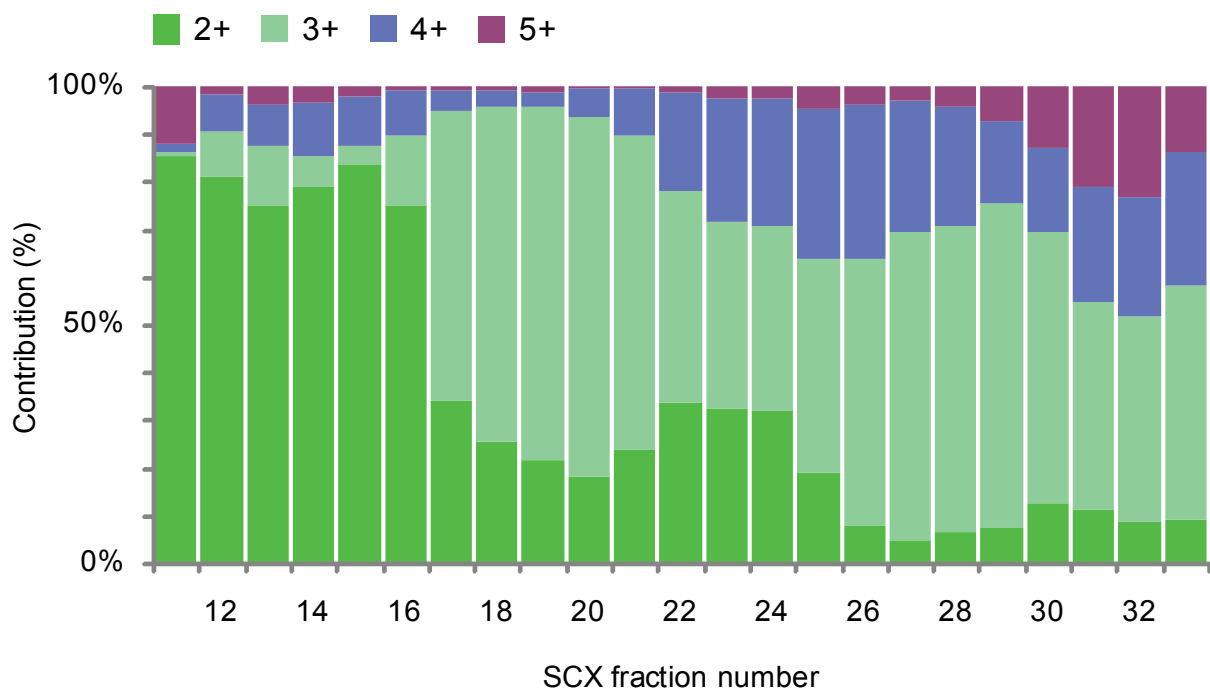


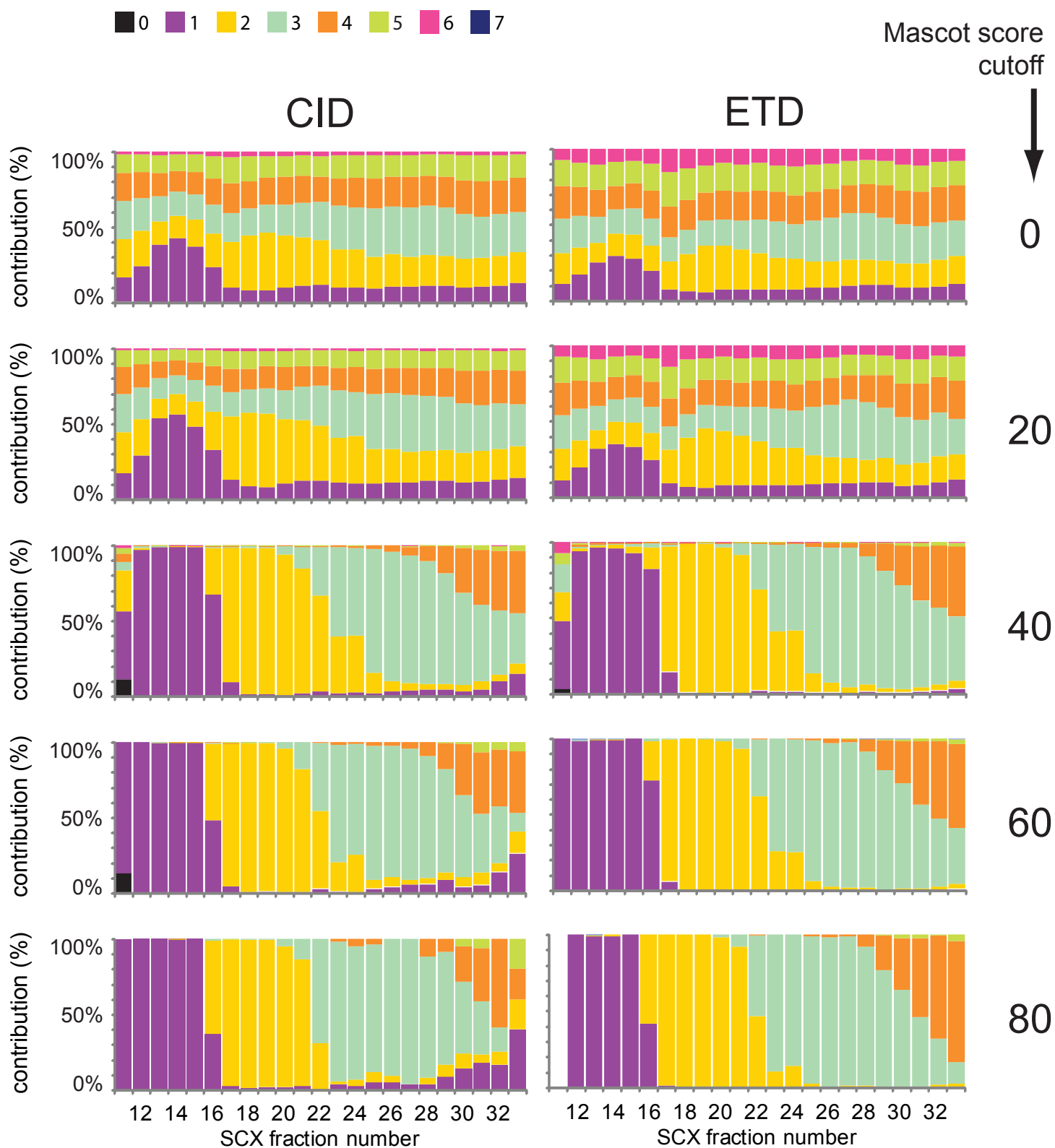
Supplementary Data



Supplementary Figure 1: (A) False discovery rates (FDR) as determined by a decoy database search, for every SCX fraction. CID results in blue and ETD in red. (B) Number of unique peptide identifications per SCX fraction. The number of peptides exclusively identified with CID are in blue, the number of peptides exclusively identified with ETD are in red, and the number of peptides identified with both activation methods are in green. Mascot cut-off placed at 40. (C) Same as B but with a cut-off of 60.

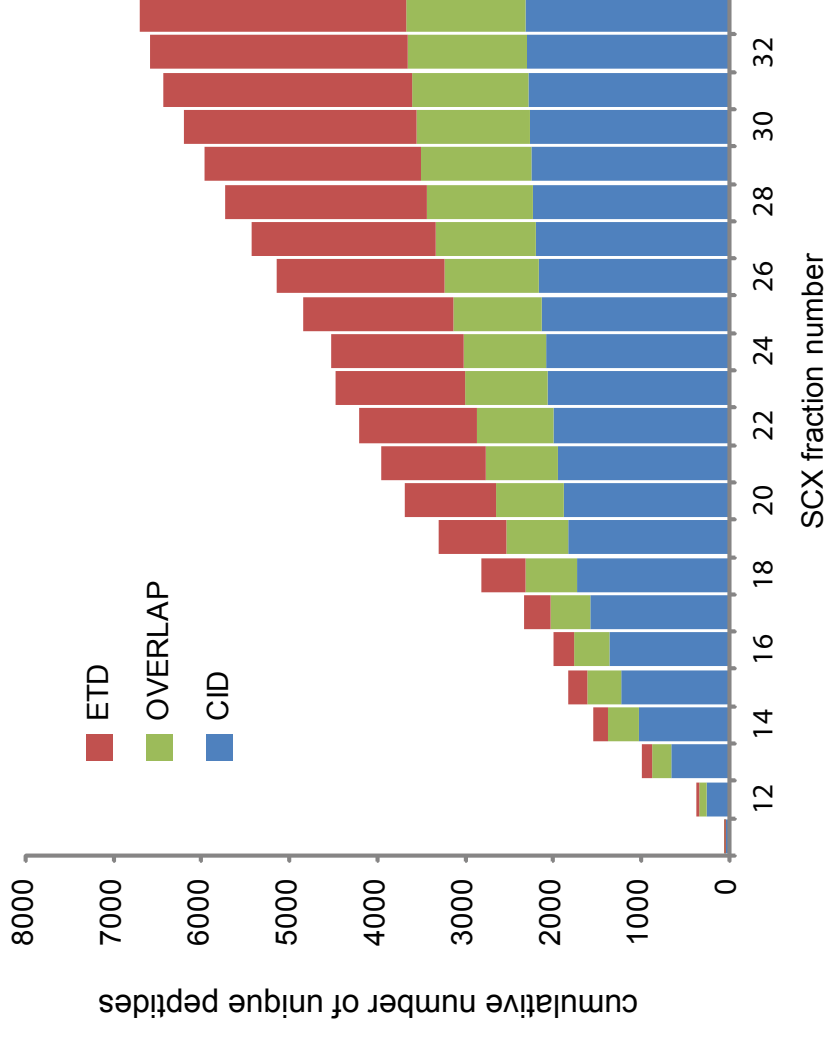


Supplementary Figure 2: Charge state peptide populations for each SCX fraction as determined by the Bioworks 'charger' preprocessor program when the 6+ and 7+ charge states are omitted.



Supplementary Figure 3: Charge state peptide populations for each SCX fraction as determined by utilising Mascot results for both CID and ETD. Each histogram represents the results using a different Mascot cutoff i.e score cut offs of 0, 20, 40, 60 and 80.

fraction	Unique peptides		Cumulative unique peptides	
	CID	ETD	CID	ETD
11	47	5	47	5
12	202	15	249	20
13	402	92	651	112
14	380	66	1031	178
15	199	41	1230	219
16	132	17	1362	236
17	208	76	1570	312
18	150	201	1720	513
19	112	253	1832	766
20	47	270	1879	1036
21	59	164	1938	1200
22	51	138	1989	1338
23	68	144	2057	1482
24	21	32	2078	1514
25	45	190	2123	1704
26	33	200	2156	1904
27	43	196	2199	2100
28	32	196	2231	2296
29	21	181	2252	2477
30	16	171	2268	2648
31	17	173	2285	2821
32	18	111	2303	2932
33	6	108	2309	3040



Supplementary Figure 4: Absolute number of peptide identifications for each individual SCX fraction with a Mascot cutoff score of 60. Adjacent to the table are the same results are represented graphically (also figure 3B).