

A New Dimension to Algae Fuel: Far from Light and Closer to Human Needs

Sandeep Satopathy*

Indian Institute of Science Education and Research, Bhopal, India

Abstract

The source and sink balance of fuel on earth, has been time and again challenged by the growing consumerism of fuel by people. To meet these demands, alternative fuel technology is currently a growing industry of research, especially the use of organisms like algae to harvest fuel, has been one of the recent developments in plant biotechnology. Algae being photosynthetic in nature, utilizes the sugar they produce, to harvest fuel in a scientifically driven manner. However there is a limitation to the variety of oil produced from the same algae decreasing the yield efficiency. But thanks to science, we have come up with new skills to harvest different types of oil products from the same algae using different sugar inputs in a dark acclimatized metabolic pathway. A few algae like *Chlorella protothecoids* and *Botryococcus braunii* are fed with rich carbohydrate sources (grass and woodchips) in dark, where it gets converted into oil using underlying principles of fermentation. The heterotrophic growth mode of algae favors an oil yield 3.4 times higher than autotrophic one, with acetane rate of the fuel obtained as 74, which is ideal for any fuel. The Oil can further be upgraded using nano-sized catalysts like commercially available calcium oxide nanocrystals which can increase the reaction rate upto 99%.

Keywords: Pyrolysis; Oil yield; Heterotrophic; Lipid; Glucose; Nano-catalysts

Introduction

The term "algae" encompasses a variety of organisms found throughout the world in or near bodies of water. Though most algae are photosynthetic or autotrophic, some are heterotrophic, deriving energy from the uptake of organic carbon such as cellulosic material. Once considered to be a part of Plant Kingdom is currently labeled under the kingdom "Protista". The feedstock involved in the bio fuel production is primarily a plant derived product.

Descending back to the time, when the first life reported to have evolved on earth was algae (much like chara); their metabolic pathways have been a source of fascination for detailed studies. However, when the world thinks of newer energy sources, these algae have proved to add a new dimension. Biomass is the most common form of renewable energy, with a potential for addressing problems related to greenhouse effect and the depletion of non-renewable energy resources. When produced by sustainable means, biomasses emit roughly the same amount carbon during conversion as is taken up during plant growth. The use of biomass, therefore doesn't contribute to a buildup of CO₂ in the atmosphere [1]. Fuels from the pyrolysis of biomass have lower sulphur and nitrogen content than do fossil fuels. They are therefore ecofriendly [2].

An ideal biofuel should have high yield, low cost industrial production of liquid fuels. Autotrophic algae biofuel production has witnessed an upgradation to the heterotrophic form, to achieve a better control. However, much of the research is concentrated on the lignocellulosic materials such as pinewood, cotton straw and stalk [3-5]. Till date energy production from microalgae via fast pyrolysis is a rarely worked on field. It is known that of all the algae a very few like *Chlorella protothecoids*, *Botryococcus braunii*, *Spirullina*, known to heterotrophically produce biofuel. Recently, a few companies have started targeting the heterotrophic route that uses fermentation. Further to decide upon the ideal algae species, the parameters of consideration are to be the cellular organization and the growth pattern of these algae [6]. Algae with a higher lipid concentration and lower crude protein content favor the fermentation pathways. Possible

reasons being higher crude lipid content enable greater combination of fatty acid modification and a lower crude protein content would ensure limited nitrogen containing product.

Basically, a high quality biomass achievement is the priority because a specific carbon chain reassembling can lead to several oil products, with a varied saturation and functional group addition. To answer the generally asked question on commodity cost, it is essential to realize that commodity cost is not the only factor of production viability because a high value specialty product can also be equally viable. Alternatives to the microalgae technique, though exists inform of yeast and higher order plants, a successful manipulation of metabolic pathway of algae to make it heterotrophic from the usual autotrophic mode; is what has been the star criteria. The research has showed that bio yield from microalgae like *C. protothecoids* etc. has roughly been in a range of 2.5-3.5 times higher than that from autotrophic cells. Not only, a higher yield but also a high quality bio-oil has been achieved in-comparison to the fast pyrolysis of lignocellulosic materials. The bio oil obtained had lower oxygen content with a high heating value (41 MJKg⁻¹), a lower density (0.092 Kg⁻¹), a lower viscosity (0.02 PaS) compared to those of wood. Still the practical utility of the biofuel is limited. The reason being that the existing infrastructure and engineering requires seem to be more conventional to the fossil fuels.

Materials and Methods

Sample preparation

The very first step in this method is obtaining a desired quality of microalgae strain and successful maintenance of the culture. The

*Corresponding author: Sandeep Satopathy, Indian Institute of Science Education and Research, Bhopal, India, E-mail: Sandeeps@iiserb.ac.in

Received March 01, 2012; Published April 25, 2013

Citation: Satopathy S (2013) A New Dimension to Algae Fuel: Far from Light and Closer to Human Needs. 2: 671. doi:[10.4172/scientificreports.671](http://dx.doi.org/10.4172/scientificreports.671)

Copyright: © 2013 Satopathy S. This is an open-access article distributed under the terms of the Creative Commons Attribution License, which permits unrestricted use, distribution, and reproduction in any medium, provided the original author and source are credited.

methods of culture apparatus and preparation of a basal medium have been stated before. For example, working with *C. protothecoids*, the algae was cultured by inoculating the green cells into the Erlenmeyer flasks containing basic culture medium under 25°C (± 1) for 120 hours (hrs.). Air was bubbled into; at regular pressure ensuring aeration. It was found to fix CO₂ through photosynthesis. This algal suspension (green) was diverted to act as heterotrophic cells by controlling the nutrient in the medium. To achieve this 10 g⁻¹ glucose was added to the basal medium and the glycine was restricted to 0.1 g⁻¹. Gradually, the green Chlorella cells in the organic carbon medium took its heterotrophic growth by taking in glucose. This led to a yellow algal solution. Finally dry powders of green phototrophic and yellow heterotrophic algal cells were obtained by centrifugation, water cleansing and desiccation (by a freeze dryer).

Fast pyrolysis

These algal cells were passed through a screen of 0.5 mm aperture to obtain smaller particles capable of ensuring rapid heat transfer in the reactor. 200 gm of sample and 4 g min⁻¹ was the proportion of the reaction mixture. The experiment was carried out in 2 groups. The first was carried out with both autotrophic and heterotrophic Chlorella cells at 500°C with a heating rate of 600 CS⁻¹, a sweep gas (N₂) flow rate of 0.4 m³h⁻¹ and a vapor residence time of 2-3 s. The other was performed using only heterotrophic cells with temperature variation from 400-600°C, with a similar reaction condition of sweep gas rate, heating rate etc.

Selection of algal culture and species

The characterizations of main chemical constituents of both autotrophic and heterotrophic cells were done. The crude lipid content determination [7] and crude protein content determination was performed.

Analysis of the bio-oil

The classification of the bio oil obtained was done by a thin layer chromatography in which oil was fractionated using column liquid chromatography and on the basis of solubility in n-hexane (30 ml). The n-hexane soluble fraction samples were added by adsorption onto an inert silica gel support and eluted successively with n-hexane, dichloromethane/n-hexane (2:1), ethanol to produce saturated hydrocarbons, aromatics and polar fractions respectively. The elemental composition was determined by elemental analyzer and heating value, density and viscosity were determined.

Results and Discussion

Chemical component in heterotrophic cells

The manipulation of growth mode of microalgae from autotrophic to heterotrophic was obtained by addition of addition of glucose (organic carbon source) to the medium and decrease of the inorganic nitrogen source in the medium. When viewed under confocal scanning laser microscope most of the autofluorescence disappeared in the heterotrophic cells as compared to autotrophic ones. Crude lipid content was determined to be 81% and crude protein content was 10.57%. The heterotrophic cells (HC cells) were full of lipid vesicles which can be easily observed under differential interference microscopy. High heating values is the result of higher lipid concentration as they have high chemical energy (Figure 1).

Yield efficiency by fast pyrolysis

Fast pyrolysis, in a high temperature heating of biomass in anaerobic conditions ensured a typical temperature of 500°C in the first set of experiments. The bio oil obtained was (57.2%) in HC cells, which was 3.4 times higher than AC cells (16.6%). This oil also had lower gas yield rate (11.2%), a low density and a viscosity, making it an ideal fuel in comparison to the contemporaries.

Need for control of temperature in oil yield process

At a high temperature, there might be a change in the phase of specific oil subtypes, affecting the yield percent. Further algal cell exposure at 0.5 mm aperture ensures efficiency of cells to persist the high temperature conditions. Strong evidence in this regards was established by Miao et al. [8]. It suggests that there was an increase in the yield of oil when the temperature was raised from 400-450°C. The oil yield increased from 41 to 57.9%. Beyond this temperature the yield gradually declined to 54.6% at 600°C. The optimal yield was obtained at 450°C, thus making the yield efficiency to be subjective to the reaction conditions like temperature, pressure, vapor residence times etc. There was an increase in oil yield in HC cells and a collaborative decrease in char yield. This significant cross inverse relation of char yield and oil yield seem to be a result of differential cellular concentrations of varied components. However going to the initial thought about lignocellulosic materials as feed stock, the maximum oil yield was obtained as 42-47% unlike 57% of algae at a temperature range of 500-550°C [3-5]. The reason can be traced to the fact that, what components makes each of these types of plants. Chemically, higher plants have cellulose, lignin, hemicellulose whereas algae are mainly composed of protein, lipids and carbohydrates (water soluble) which are conducive to the pyrolysis method [9-11]. However from Miao et al. [8], the result suggests that the range of temperature for HC cells is more economical and easily supplied using lignocellulosic materials, thus making it more viable (Figure 2).

Advantages

In simple words, the yield efficiency (3.4 times) is the biggest advantage of this oil from algae. However, the control offered by

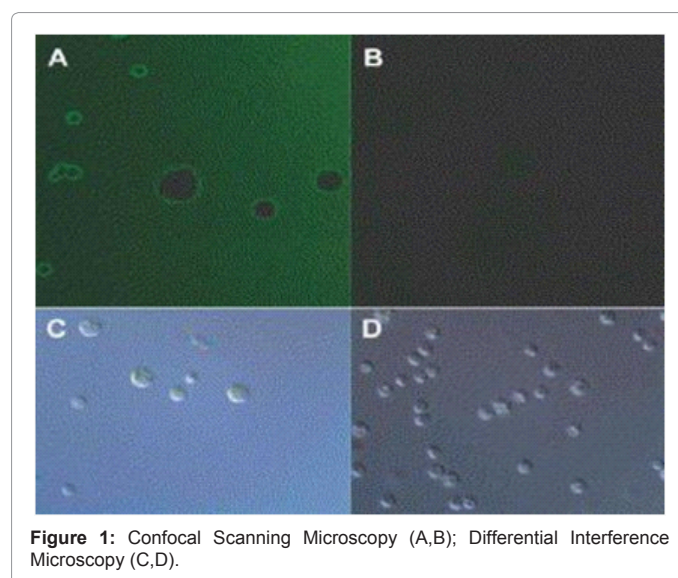


Figure 1: Confocal Scanning Microscopy (A,B); Differential Interference Microscopy (C,D).

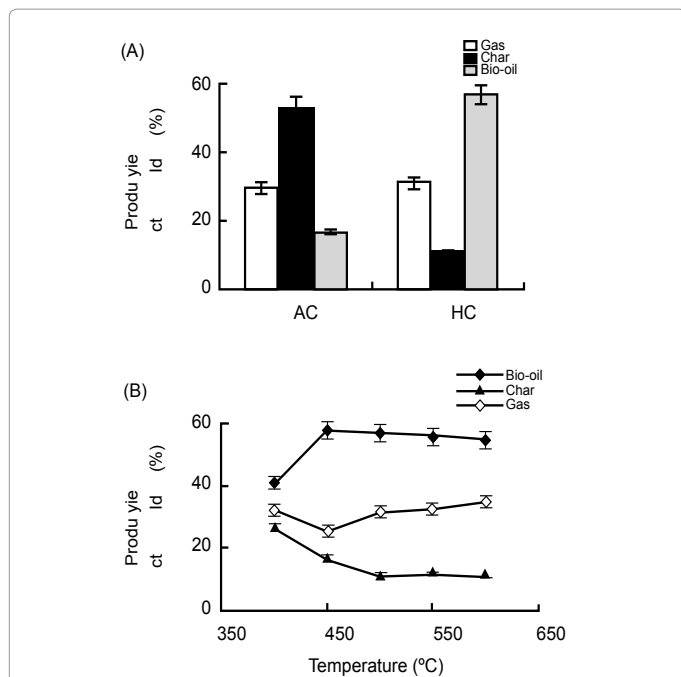


Figure 2: Product yields (on the basis of dry weight of samples) of fast pyrolysis of samples at different temperatures. (A) Product yield of AC and HC cells of *C. protothecoids* at 500°C. (B) Product yield of HC cells of *C. protothecoids* at temperature ranging from 400 to 600°C.

growing algae in the dark and the flexibility in the feedstock is an addendum. Anaerobic heterotrophic growth of algae results in higher secondary metabolite production and thus higher product variability. To minimize the cost of the product, the feasibility of using several wastes as a feedstock is of significance. The method of heterotrophic algae growth and thereby derived bio-oil by fast pyrolysis consumes less space and thus meets infrastructural challenges. A wide range of products have been reported to be produced. These are from soap, personal care products to surfactants, nutraceuticals, pharmaceuticals etc. These oils are also used as dielectric fluid in the transformer market. The bio fuel can also be a string competitor to the fossil fuels as it has a high cetane rate (74) and it doesn't build up CO₂ concentration, thus regulating global warming.

There is a kind of algal biofuel called FAME (fatty acid methyl ester based) fuel which has shown better cold properties than any other fossil fuel. So the product obtained by fast pyrolysis can be titled as "Co-product Inclusive Model" (CIM). The model outline is:

Quantity of Sugar+Quantity of algae=Main product+Multiple by-products

Disadvantages

The infrastructure conventionality is the prime limiting criteria of this method, as photosynthetic algal bio-oil generation is more conventional. Further, food chain might be disturbed if other alternatives like plant products are used. It requires the land/sea to grow sugar to feed the algae for desired product, whereas it could be more efficient to grow algae using sunlight for energy. The yield practically decreases, due to sticking of algal cells to the wall of the reactor during centrifugation. However, these reported disadvantages are much irrelevant when looked at the significance of the product formed.

Route-Dependence theory

As mentioned the process of oil production from algae involves a series of co related steps and there is a sequence to it. The efficiency of this process involves successful amalgamation of these steps. Thus analyzing the route taken up during the reaction suggests a route dependence theory. If plants could process Sunlight-Sugar more efficiently than Sunlight-Oil and algae could process Sugar very efficiently to biodiesel than Sugar-Oil, this process makes a sense.

$$Sn2OA > Sn2Sgp + Sg2OA$$

$$Sn2OP > Sn2Sgp + Sg2OA$$

Where,

Sn2OA- cost of sunlight to oil using algae.

Sn2Sgp- cost of sunlight to sugars by plants.

Sn2OP- cost of sunlight to Oil by plants.

Sg2OA- cost of Sugar to Oil by Algae.

Upgradation

The use of catalysts like MCM.41 based catalyst with uniform mesopore may also improve the overall oil yield and increases the oxygenated compounds. Acid trans-esterification, of crude oils derived from *C. protothecoids*, using sulphuric acid with molar ratios of the methanol to oil (30-56:1) exhibited a desired reduction in the specific gravity value.

Especially when the process involves trans-esterification of nanometer sized oxide particles, there can be use of inorganic oxides as heterogeneous nano catalyst. While considering these oxides surface area as well as catalytic activity must be parameters for consideration [9]. For example, it has been reported that PbO₂ (Lead Oxide) has been most efficient in conversion of crude oil to methyl ester (89% efficiency) while PbO₂ is shown to have comparatively lowest surface area. Commercially available calcium oxide is known to improve the trans-esterification process by 2% whereas nano sized CaO (20 nm) increases the same process by 99%. Tranesterification of crude oil obtained from *C. protothecoids*, using acid catalysts (sulphuric acid) with molar ratios of methanol to oil (30 to 56:1) showed a required lessening of specific gravity [9].

Conclusion

The study establishes the precise production of liquid fuel from microalgae involving a process like fast pyrolysis. The manipulation of metabolic pathway of microalgae as in *C. protothecoids* (transformed to heterotrophic) has been possible due to addition of feedstock like glucose (organic carbon source) in the medium. There was a higher lipid concentration in the cells due to heterotrophic growth mode. In addition, heterotrophic growth mode is more conventional to present microbial reactors, improving the yield and making the oil more cost effective [6].

The product and the by-product together make a term called "Co-Product", which results in production of several ranges of secondary metabolites, making algae a net producer. The oil yield was 3.4 times higher than autotrophic mode with a significant cetane rate of 74. This makes it potential for an ideal fuel. Meanwhile the temperature, for maximum oil production from microalgae was decreased because

heterotrophic growth results in high content of materials that facilitate pyrolysis. The highest bio oil yield 57.4% was obtained at 450°C, a lower temperature than that for wood. The development of bioengineering can be added to the fast pyrolysis technique to introduce an entire metabolic pathway not present in an organism and thus would lead to development of a system for energy production, with slowing of global warming. A new thought of using the sugar from the algae itself, can be a combinational mode of operation, taking into account both autotrophic and heterotrophic mode.

Acknowledgements

I would like to acknowledge the information shared by the SOLAZYME Company on their website. I would also like to thank Mr. Sambheet Satapathy, for helping in the designing of this entire content into a systematic paper.

References

1. McKendry P (2002) Energy production from biomass (part 1): overview of biomass. *Bioresour Technol* 83: 37-46.
2. Churin E, Delmon B (1989) What can we do with pyrolysis oils? Pyrolysis and gasification. Elsevier Applied Science. London, UK.
3. Demirbas A (2002) Analysis of Liquid Products from biomass via flash pyrolysis. *Energy Sour* 24: 337-345.
4. Grecl HF (2002) The effect of a sweeping gas flow rate on the fast pyrolysis of biomass. *Energy Sour* 24: 633-642.
5. Putun AE (2002) Biomass to bio-oil via fast pyrolysis of cotton straw and stalk. *Energy Sour* 24: 275-285.
6. Behrens PW, Kyle DJ (1996) Microalgae as a source of fatty acids. *J Food Lipid* 3: 259-272.
7. Zhu M, Zhou PP, Yu LJ (2002) Extraction of lipids from *Mortierella alpina* and enrichment of arachidonic acid from the fungal lipids. *Bioresour Technol* 84: 93-95.
8. Miao X, Wu Q, Wu G, Zhao N (2003) Sucrose accumulation in salt-stressed cells of *agp* gene deletion-mutant in cyanobacterium *synechocystis* sp PCC 6803. *FEMS Microbiol Lett* 218: 71-77.
9. Raveendran K, Ganesh A, Khilar KC (1996) Pyrolysis characteristics of biomass and biomass components. *Fuel* 75: 987-998.
10. Meier D, Faix O (1999) State of the art of applied fast pyrolysis of lignocellulosic materials — a review. *Bioresour Technol* 68: 71-77.
11. Oasmaa A, Kuoppala E, Gust S, Solantausta Y (2003) Fast pyrolysis of forestry residue. 1. Effect of extractives on phase separation of pyrolysis liquids. *Energy Fuels* 17: 1-12.