

11th International Conference on
Vascular Dementia

February 15-16, 2019 Amsterdam | Netherlands

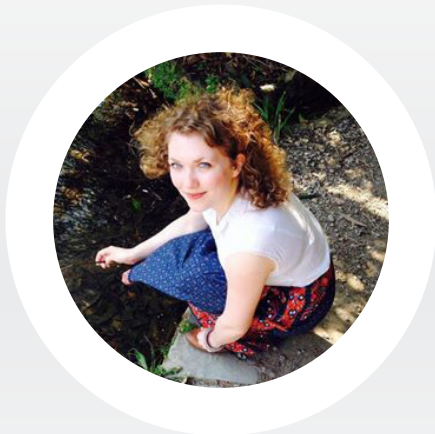
Creativity, community & connections: empowering people living with dementia through artistic practice

The arts provide an incredibly valuable resource through which people living with dementia can be empowered to live well: with more evidence being released about the benefits of art practice for people living with dementia - both on neurological and social levels - there is more reason than ever to delve further into its potential. Ellie Robinson-Carter has created and delivered numerous international projects which are uniquely designed to best suit people living with dementia. The projects encourage and enable individuals through person-led collaboration and co-authorship. They are of a highly professional standard, some being published and with professional exhibitions, meaning individuals are taking part in projects which empower them as artists, writers and creators. Her projects have been funded by various bodies, including the Big Lottery, Arts Council and FEAST. As is the case for all of us, people living with dementia wants to feel connected, useful and necessary to their communities and society more widely. Along with a diagnosis of dementia, established roles in their social networks are challenged and can become difficult to maintain. Art creates a safe yet exciting and rewarding space for individuals to express themselves creatively, in ways that works for them, providing participants with cognitive stimulation, experimentation, as well as reconnection to previous skills and the acquisition of new ones.

Biography

Ellie Robinson-Carter is an Illustrator, Researcher, Creative Dementia Practitioner and Lecturer based in Falmouth, UK. She devises creative frameworks and invites individuals to take ownership of them, fostering their authorial voices and personal narratives. Working locally, nationally and internationally she interacts with people living with dementia and their carers, using creative practice to nurture individual's self-confidence, independence and self-expression. She also collaborates with other creative practitioners such as illustrator Violeta Noy (www.sophiesproject.com) and poet Sally Crabtree (<https://synapticknitter.com/Passing-theParcel>).

erobinsoncarter78@gmail.com



Ellie Robinson-Carter

Sensory Trust, UK

Notes: