

Noninvasive Method for Glucose Level Estimation by Saliva

Agrawal RP^{1*}, Sharma N², Rathore MS², Gupta VB², Jain S¹, Agarwal V¹ and Goyal S¹

¹Diabetes Care & Research Centre, S.P. Medical College, Bikaner, India

²B.R. Nahta College of Pharmacy, Mandsaur, India

Abstract

Aims: Diagnostic devices available in the market to measure blood glucose level require blood as diagnostic body fluid. Hence, necessity arises to find some non-invasive diagnostic mean to measure body glucose level frequently without any discomfort to the patient. The present study was aimed at estimation of blood and salivary glucose level in diabetic and non diabetic subjects.

Methods: Forty diabetic and forty non-diabetic subjects were randomly selected. A detailed history of each patient was obtained. The quantitative estimation of blood and saliva glucose levels was performed by glucose oxidase method using enzymatic kit GOD-POD, glucose oxidase-peroxidase.

Results: A correlation was observed between FSG, fasting saliva glucose and FPG, fasting plasma glucose of diabetic as well as non diabetic subjects. The correlation coefficient for non-diabetic and diabetic subjects were +0.58 and +0.40 respectively, proving the correlation between fasting saliva glucose and fasting blood glucose values statistically.

Conclusion: Values observed regarding blood and saliva glucose level were found distinctly different between normal and diabetic subjects suggesting that monitoring of saliva glucose level can be used as an index of diabetes mellitus.

Keywords: Noninvasive; Saliva glucose; Blood glucose; Diabetes mellitus

Introduction

The most commonly used laboratory diagnostic procedures involve the analysis of cellular and chemical constituents of blood. Other biological fluids are utilized for the diagnosis of disease. Saliva offers some distinctive advantages. Whole saliva can be collected non-invasively and by individuals with limited training. No special equipment is needed for collection of the fluid. Diagnosis of disease *via* the analysis of saliva is potentially valuable for children and older adults, since collection of the fluid is associated with fewer compliance problems as compared with the collection of blood. Further analysis of saliva may provide a cost-effective approach for the screening of large populations. Saliva can be considered as gland-specific saliva and whole saliva. Gland-specific saliva can be collected directly from individual salivary glands: parotid, Submandibular, sublingual, and minor salivary glands. Secretions from both the Submandibular and sublingual salivary glands enter the oral cavity through Wharton's duct and thus the separate collection of saliva from each of these two glands is difficult [1]. The collection and evaluation of the secretions from the individual salivary glands are primarily useful for the detection of gland-specific pathology *i.e.* infection and obstruction. However, whole saliva is most frequently studied when salivary analysis is used for the evaluation of systemic disorders. Whole saliva (mixed saliva) is a mixture of oral fluids and includes secretions from both the major and minor salivary glands. Saliva in addition to several constituents of non-salivary origin, such as GCF, gingival crevicular fluid expectorated bronchial and nasal secretions, serum and blood derivatives from oral wounds, bacteria and bacterial products, viruses and fungi, desquamated epithelial cells, other cellular components and food debris [2-4] can be collected with or without stimulation. Saliva is collected by gustatory stimulation *i.e.* application of citric acid on the subject's tongue [5]. Stimulation obviously affects the quantity of saliva; however, the concentrations of some constituents and the pH of the fluid are also

affected. Unstimulated saliva is collected without exogenous gustatory, masticatory or mechanical stimulation. Unstimulated salivary flow rate is most affected by the degree of hydration but also by olfactory stimulation, exposure to light, body positioning and seasonal as well as diurnal factors. The best two ways to collect whole saliva are the draining method in which saliva is allowed to drip off the lower lip. Another one is spitting method in which the subject spits saliva into a test tube [1]. Different reagents are used to determine the content of saliva. Molisch test gives a positive result of purple colour that reveals presence of carbohydrates. Small amounts of organic non-protein compounds, uric acid, bilirubin and creatinine can be detected in saliva. Saliva moreover contains glucose, amino acids, lipids like cholesterol and mono/diglycerides of fatty acid [6] saliva may be useful for the diagnosis of hereditary disorders, autoimmune diseases, malignant and infectious diseases, and endocrine disorders, as well as in the assessment of therapeutic levels of drugs and the monitoring of illicit drug use [7].

The present study was aimed at estimation of blood and salivary glucose level in diabetic and non diabetic subjects. On the basis of previous diagnostic studies attempts were made to establish a correlation between glucose level in blood and saliva with special reference to age.

***Corresponding author:** Agrawal RP, Diabetes Care & Research Centre, S.P. Medical College, Adarsh Colony, Bikaner-34003, Rajasthan, India, Tel: 0091-151-2202431; Fax: 0091-151-2202131; E-mail: drpagrawal@yahoo.co.in

Received March 28, 2013; **Accepted** May 27, 2013; **Published** June 05, 2013

Citation: Agrawal RP, Sharma N, Rathore MS, Gupta VB, Jain S, et al. (2013) Noninvasive Method for Glucose Level Estimation by Saliva. J Diabetes Metab 4: 266. doi:[10.4172/2155-6156.1000266](https://doi.org/10.4172/2155-6156.1000266)

Copyright: © 2013 Agrawal RP, et al. This is an open-access article distributed under the terms of the Creative Commons Attribution License, which permits unrestricted use, distribution, and reproduction in any medium, provided the original author and source are credited.

Materials and Methods

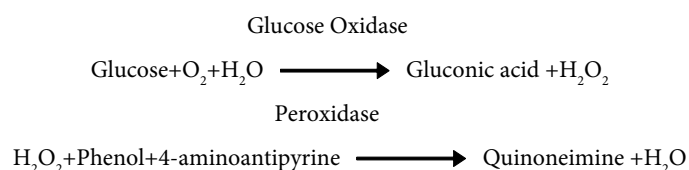
This study was conducted in Diabetes Care and Research Center of S.P. Medical College, Bikaner. Eighty patients were randomly selected for this study. A detailed history of each patient was obtained regarding the age, sex, duration of diabetes, associated risk factors, family history and any associated illness. The quantitative estimation of FPG, fasting plasma glucose and FSG, fasting saliva glucose was done by glucose oxidase method using enzymatic kit GOD-POD, glucose oxidase-peroxidase.

Saliva collection

The patients were given detailed information about the collection protocol. They were instructed to exclude brushing teeth before the collection and to avoid food and fluid (apart from water) ingestion or chewing gum for at least 30 minutes before collection and to rinse the mouth with water (preferably distilled). Saliva was collected in clean sterile containers by spitting method.

Quantitative determination of glucose

Principle of the method: Glucose oxidase (GOD) catalyses the oxidation of glucose to gluconic acid. The formed hydrogen peroxide (H_2O_2) is detected by a chromogenic oxygen acceptor phenol, 4-AP, 4-aminophenazone in the presence of POD, peroxidase.



The red colored complex quinoneimine formed was measured colorimetrically and the intensity. Of the colour formed was directly proportional to the concentration of glucose in the sample.

Result

In the control group 28 were male and 12 were female subjects. In the study group 26 were male and 14 were female patients. The mean FSG of the subjects in non diabetic group (I) was 6.08 ± 1.16 mg/dl and the mean FPG of the subjects in non diabetic group (I) was 92.11 ± 9.39 mg/dl, whereas the mean FPG of the subjects in diabetic group (II) was 171.31 ± 54.23 mg/dl and the mean FSG of the subjects in diabetic group (II) was 10.93 ± 1.93 mg/dl.

It was observed that in each age group difference between mean FPG values of diabetic and that of non diabetic subjects were statistically significant ($P < 0.05$) except two groups up to age of 40 years. In each age group difference between mean FSG values of diabetic and that of non diabetic subjects were found statistically significant (Table 1).

In each age group difference between mean FPG and FSG values of nondiabetic subjects were statistically significant (Table 2).

The similar results were observed when mean FPG and FSG values of diabetic subjects were compared (Table 3).

A correlation between fasting plasma glucose and fasting saliva glucose of non diabetic was observed. The fasting saliva glucose values of non diabetic subjects were further confirmed by the values of correlation coefficient ($r = +0.58$) (Figure 1).

In the same manner a correlation between fasting plasma glucose and fasting saliva glucose of diabetics was found. The fasting saliva

Age	Nondiabetic (FPG) Mean \pm S.E.	Diabetic (FPG) Mean \pm S.E.	t value	p value	Nondiabetic (FSG) Mean \pm S.E.	Diabetic (FSG) Mean \pm S.E.	t value	p value
≤ 30	85.41 ± 1.17	162.7 ± 44.14	1.75	<0.2	5 ± 0.09	9.87 ± 0.52	9.36	<0.001
31-40	91.87 ± 2.80	167.23 ± 40.47	1.85	<0.1	5.99 ± 0.39	10.57 ± 0.53	7.04	<0.001
41-50	90.99 ± 2.59	168.97 ± 12.14	5.82	<0.001	5.94 ± 1.13	10.63 ± 0.39	9.57	<0.001
51-60	98.04 ± 5.57	157.88 ± 17.47	3.21	<0.005	7.0 ± 0.35	11.03 ± 0.60	4.95	<0.001
>60	92.2 ± 2.91	198.46 ± 20.99	5.01	<0.001	6.1 ± 0.38	12.23 ± 1.10	4.14	<0.001
Total	92.11 ± 1.48	171.31 ± 8.58	6.43	<0.001	6.08 ± 0.18	10.93 ± 0.30	13.83	<0.001

Table 1: Comparison of diabetic and nondiabetic in FPG and FSG with reference to age.

Age	Non diabetic (FPG)		Nondiabetic (FSG)		P
	Mean	S.E.	Mean	S.E.	
≤ 30	85.41	1.17	5	0.09	<0.001
31-40	91.87	2.80	5.99	0.39	<0.001
41-50	90.99	2.59	5.94	0.31	<0.001
51-60	98.04	5.57	7	0.35	<0.001
>60	92.2	2.91	6.1	0.38	<0.001
Total	92.11	1.48	6.08	0.18	<0.001

Table 2: Comparison of Fasting Plasma Glucose (FPG) and Fasting Saliva Glucose (FSG) in non diabetics with reference to age.

Age	Diabetic (FPG)		Diabetic (FSG)		P
	Mean	S.E.	Mean	S.E.	
≤ 30	162.7	44.14	9.87	0.52	<0.001
31-40	167.23	40.47	10.57	0.53	<0.001
41-50	168.97	12.14	10.63	0.39	<0.001
51-60	157.88	17.47	11.03	0.60	<0.001
>60	198.46	20.99	12.23	1.10	<0.001
Total	171.31	8.58	10.93	0.30	<0.001

Table 3: Comparison of Fasting Plasma Glucose (FPG) and Fasting Saliva Glucose (FSG) in diabetics with reference to age.

Comparison of Fasting Plasma Glucose and Fasting Saliva Glucose in non diabetics

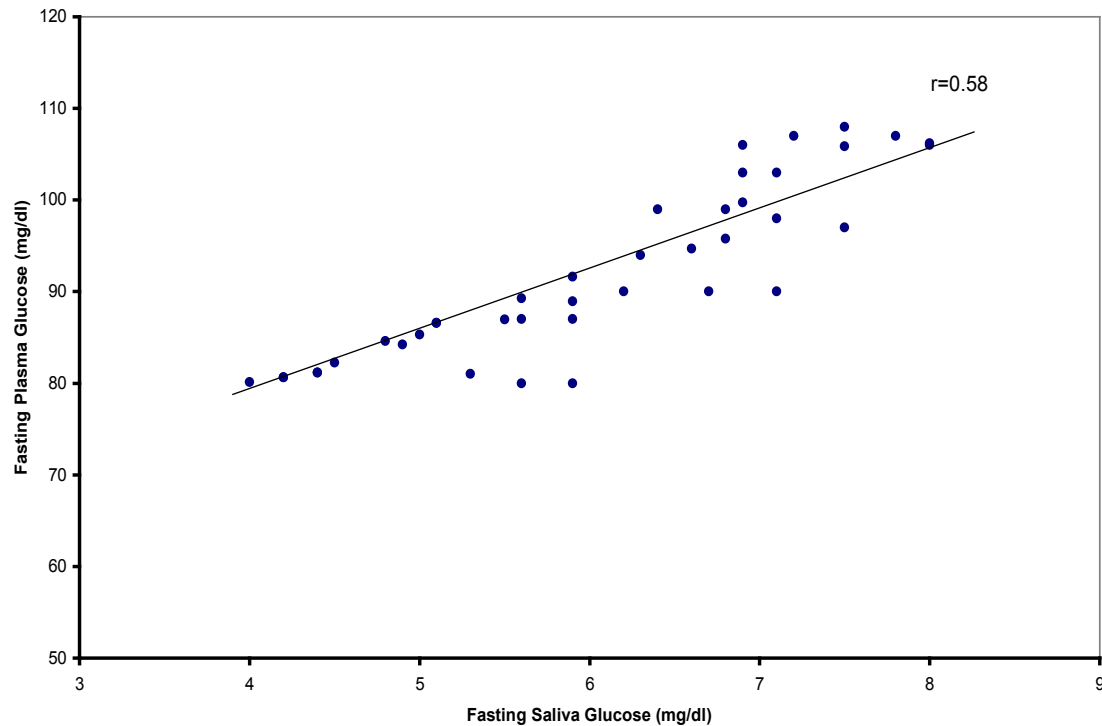


Figure 1: Correlation of Fasting Plasma Glucose (FPG) and Fasting Saliva Glucose (FSG) in non-diabetic.

Comparison of Fasting Plasma Glucose and Fasting Saliva Glucose in diabetics

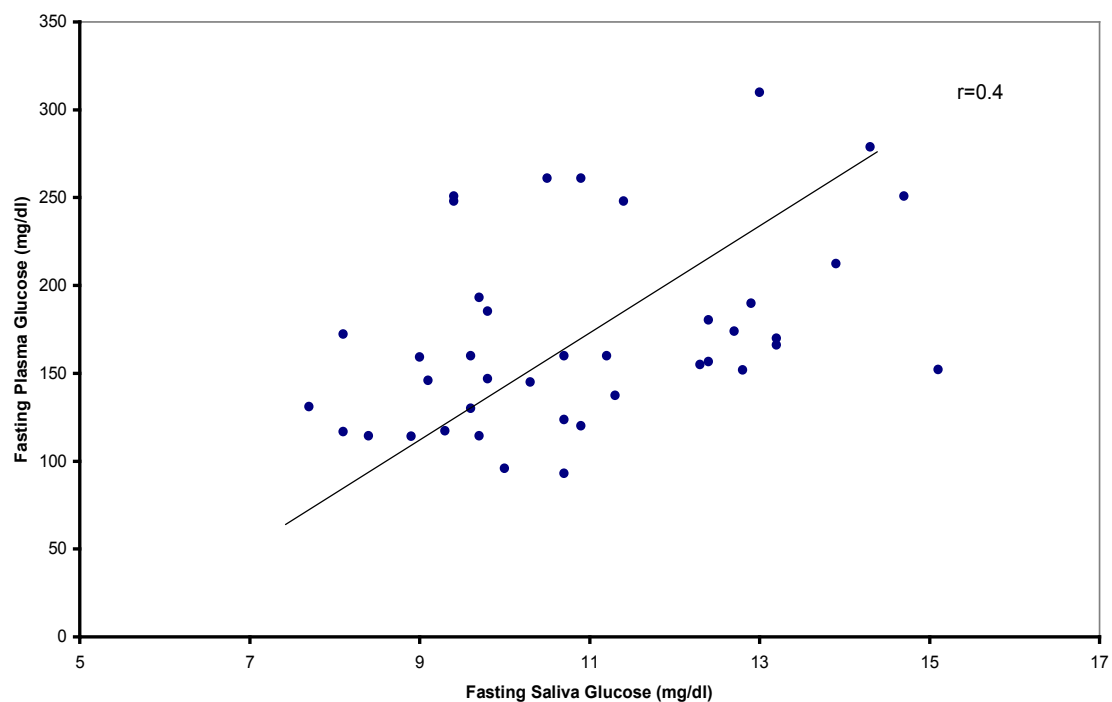


Figure 2: Correlation of Fasting Plasma Glucose (FPG) and Fasting Saliva Glucose (FSG) in diabetic.

glucose values of diabetic subjects were confirmed by the values of correlation coefficient($r = +0.40$ (Figure 2).

Discussion

Diabetes is globally wide spread disease. Various diagnostic devices are available in the market to measure the blood glucose level. However, in available products blood is taken as diagnostic body fluid. There a necessity arises to establish a noninvasive procedure to determine the blood glucose level without taking blood. Keeping the above in view, the present study was aimed at estimation of blood and salivary glucose level in diabetic and non diabetic subjects. Saliva is a wonderful marker of early disease detection that leads to more effective treatment, risk assessment for estimation of glucose level and a simple, non invasive alternative to blood and urine tests. If a glucose level measuring procedure is developed that can monitor glucose level noninvasively, it become make early detection of diabetic mellitus possible. More research is required for defining its medical use in future.

The present attempt was designed to establish a noninvasive procedure to measure glucose level using saliva which is most easily obtainable. A correlation was observed between FSGL, fasting saliva glucose level and FPGL, fasting plasma glucose level of diabetic as well as non diabetic subjects. The correlation coefficient of non diabetic and diabetic subjects were $+0.58$ and $+0.40$ respectively. These values of correlation coefficient prove the correlation of fasting saliva glucose and fasting blood glucose values statistically.

In present study, diabetic and non diabetic subjects were divided in subgroups regarding their age. When the mean values of fasting saliva glucose and fasting blood glucose were compared for non diabetic and diabetic, the difference was found statistically significant in all subgroups expect two. From these findings it is believed that migration of glucose into saliva is affected by diabetes mellitus.

In an early study, conducted to determine whether glucose tolerance curves for parotid saliva of diabetics were different from those for non-diabetics, the results were in similar direction with those of present one. Glucose concentrations in parotid secretion varied directly with plasma concentrations for each subject but at a much lower order of magnitude. Average glucose concentrations in parotid saliva for diabetic subjects were found slightly higher at each time period than those for non-diabetic subjects [8].

The salivary glucose concentration was observed lower during the period of better metabolic control in patients with diabetes mellitus in an earlier study [9].

Other researchers also asserted that the salivary glucose concentrations seem to correlate with the serum glucose concentration in the patients of diabetes mellitus [10,11]. A significant glucose concentration in saliva from the patients with type 1 diabetes was reported in another study, which indicated towards this possibility that the presence of glucose in the saliva of the diabetics probably reflects the high serum glucose concentrations [12].

One researcher advocated that in well-controlled individuals with altered glucose metabolism, salivary gland function is not significantly impaired [13].

Results obtained from present study are in accordance with the previous study where the influence of different salivary glands to the correlation between BGL and SGL was examined [14]. Submandibular and sublingual saliva and parotid saliva was collected and OGTT, oral glucose tolerance test was carried out to investigate the time-course

changes in BGL and SGL of six normal subjects. Submandibular and sublingual saliva of normal and diabetic subjects was collected in order to examine the changes of SGL by diabetic mellitus. Distinct difference was observed by the kinds of salivary glands in the correlation coefficients.

A study carried out in last few years revealed that the salivary samples of the non-diabetic control subjects did not show the presence of glucose even in the slightest concentrations, while the samples obtained from the diabetics showed significant concentrations of glucose in the saliva [15]. While recent study conducted to determine the unstimulated whole saliva biochemical parameters in healthy dental students, showed 0.75 ± 0.44 (mmol/l) and 0.73 ± 0.47 (mmol/l) glucose concentrations in male and female students respectively [16].

No doubt, there is limitation of the study that a lot of factors influence the secretion of saliva and constituents of saliva. Hence, the technique we adopt still requires validation in large number of patients.

Results of this study indicate towards correlation between fasting saliva glucose and fasting plasma glucose values in diabetics and non diabetics. It indicates that saliva glucose level is applicable to use as an index for diabetes mellitus.

Conclusion

Outcome of present study clearly depicts a correlation between fasting plasma glucose and fasting saliva glucose of diabetics. It can be concluded that distinct difference was observed between normal and diabetic subjects suggesting that monitoring of saliva glucose level can be used as an index of diabetes mellitus. With further studies on the correlation between diabetic mellitus and SGL, it is believed that not only noninvasive BGL estimation becomes possible, but also early detection of diabetes mellitus.

References

1. Navazesh M (1993) Methods for collecting saliva. *Ann N Y Acad Sci* 694: 72-77.
2. Mandel ID, Wotman S (1976) The salivary secretions in health and disease. *Oral Sci Rev*: 25-47.
3. Fox PC (1989) Saliva composition and its importance in dental health. *Compend Suppl* S457-460.
4. Sreebny LM (1989) Salivary flow in health and disease. *Compend Suppl* S461-469.
5. Mandel ID (1993) Salivary diagnosis: more than a lick and a promise. *J Am Dent Assoc* 124: 85-87.
6. Chiappin S, Antonelli G, Gatti R, De Palo EF (2007) Saliva specimen: a new laboratory tool for diagnostic and basic investigation. *Clin Chim Acta* 383: 30-40.
7. Kaufman E, Lamster IB (2002) The diagnostic applications of saliva--a review. *Crit Rev Oral Biol Med* 13: 197-212.
8. Englander HR, Jeffay AI, Fuller JB, Chauncey HH (1963) glucose concentrations in blood plasma and parotid saliva of individuals with and without diabetes mellitus. *J Dent Res* 42: 1246.
9. Reuterving CO, Reuterving G, Hägg E, Ericson T (1987) Salivary flow rate and salivary glucose concentration in patients with diabetes mellitus influence of severity of diabetes. *Diabete Metab* 13: 457-462.
10. Darwazeh AM, MacFarlane TW, McCuish A, Lamey PJ (1991) Mixed salivary glucose levels and candidal carriage in patients with diabetes mellitus. *J Oral Pathol Med* 20: 280-283.
11. Swanljung O, Meurman JH, Torkko H, Sandholm L, Kaprio E, et al. (1992) Caries and saliva in 12-18-year-old diabetics and controls. *Scand J Dent Res* 100: 310-313.
12. Twetman S, Nederfors T, Stahl B, Aronson S (1992) Two-year longitudinal

-
- observations of salivary status and dental caries in children with insulin-dependent diabetes mellitus. *Pediatr Dent* 14: 184-188.
13. Cherry-Peppers G, Sorkin J, Andres R, Baum BJ, Ship JA (1992) Salivary gland function and glucose metabolic status. *J Gerontol* 47: M130-134.
14. Yamaguchi M, Mitsumori M, Kano Y (1998). A new approach to noninvasive measurement of blood glucose using saliva, 20th Annual International Conference of the IEEE Engineering in Medicine and Biology Society 20: 4.
15. Amer S, Yousuf M, Siddiqui PQ, Alam J (2001) Salivary glucose concentrations in patients with diabetes mellitus--a minimally invasive technique for monitoring blood glucose levels. *Pak J Pharm Sci* 14: 33-37.
16. Agha-Hosseini F, Dizgah IM, Amirkhani S (2006) The composition of unstimulated whole saliva of healthy dental students. *J Contemp Dent Pract* 7: 104-111.