

Biodiversity of the Phytoconstituents in the Some Plant Species Potentially Toxic

Butnariu M*

Banat's University of Agricultural Sciences and Veterinary Medicine, Calea Aradului, Timis, Romania

*Corresponding author: Monica Butnariu, Banat's University of Agricultural Sciences and Veterinary Medicine "Regele Mihai I al Romanei" Timisoara, Romania-300645, Calea Aradului 119, Timis, Romania, Tel: +40-0-256-277-464; E-mail: monicabutnariu@yahoo.com

Received date: February 20, 2017; Accepted date: February 25, 2017; Published date: March 03, 2017

Copyright: © 2017 Butnariu M. This is an open-access article distributed under the terms of the Creative Commons Attribution License, which permits unrestricted use, distribution, and reproduction in any medium, provided the original author and source are credited.

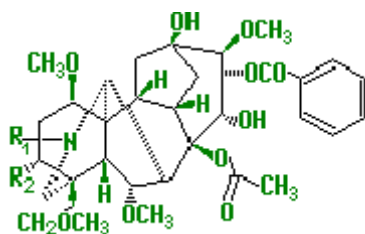
Editorial

List of the toxic plants, contains plants in which all of the plant or only certain parts of it are toxic. In general, poisoning occurs on the digestive system, but some plants, even by touch, may cause poisoning. Factors influencing the seriousness of intoxication are: Individual constitution, age, Characters inherited (hereditary inclination). At some plants, which contain a toxic labile, by boiling toxicity becomes inactive, it decomposes. Toxic plants in fairly high proportion negatively influence the quality. The species characterized from the viewpoint of chemical composition belong to classes such as the following.

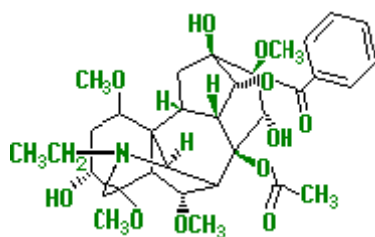
Aconitum Species

Phytoconstituents

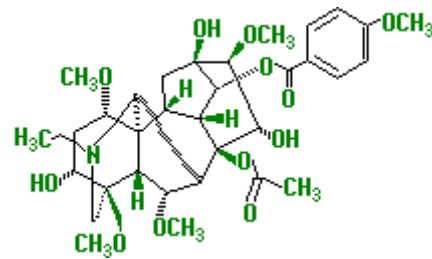
Aconitine, mesaconitine, lycoctonine and other alkaloids (2% in tubers). *Aconitum* roots contain catecholamine alkaloids, quaternary ammonium compounds, isoquinolines and different biocompounds.



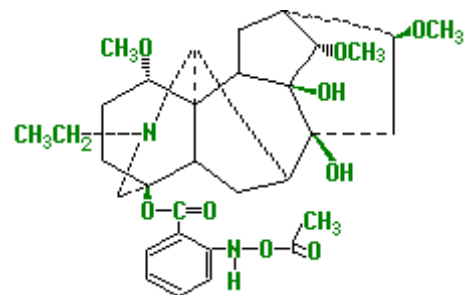
Mesaconitine: R_1 -CH₃; R_2 -OH; C₃₃H₄₅NO₁₁; CAS: 2752-64-9
Hypaconitine: R_1 -CH₃; R_2 -H; C₃₃H₄₅NO₁₀; CAS: 6900-87-4



Aconitine: R_1 -C₂H₅; R_2 -OH; C₃₃H₄₇NO₁₁; CAS: 302-27-2



Jesaconitine: C₃₅H₄₉NO₁₂; CAS: 16298-90-1



Lappaconitine: C₃₂H₄₄N₂O₈; CAS: 32854-75-4

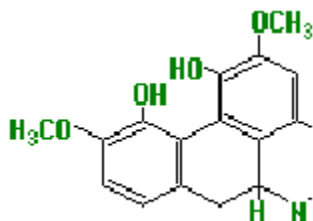
Toxicity

Main toxins, like aconitine, mesaconitine, jesaconitine and hypaconitine. The active principles are aconitine (a fast-acting toxin) and related alkaloids. Aconite extracts have been used homeopathically. Use is not recommended because of its toxicity. Aconitine and related alkaloids found in the *Aconitum* species are highly toxic, especially cardiotoxins or neurotoxins. The wild plant (roots or root tubers) is extremely toxic [1].

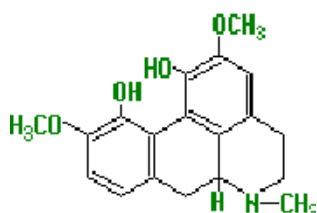
Actaea spicata

Phytoconstituents

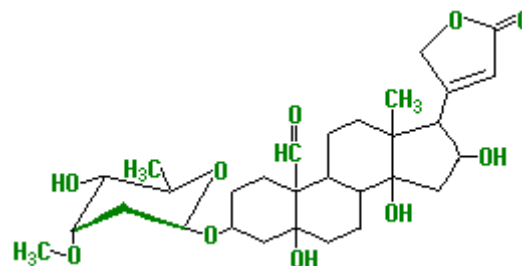
Actaea spicata Linn. (Ranunculaceae) contents the benzylisoquinoline alkaloids (magnoflorine and corytuberine).



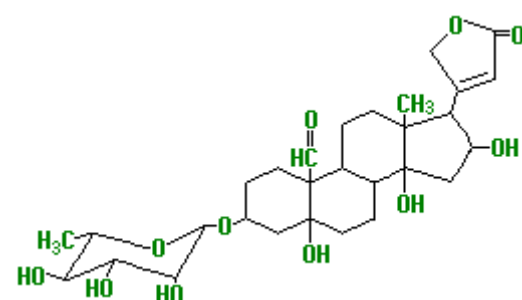
Magnoflorine: $C_{20}H_{24}NO_4$; CAS: 2141-09-5



Corytuberine: $C_{19}H_{21}NO_4$; CAS: 517-56-6



Cymarine: $C_{30}H_{44}O_9$; CAS: 508-77-0



Adonitoxine: $C_{29}H_{42}O_{10}$; CAS: 17651-61-5

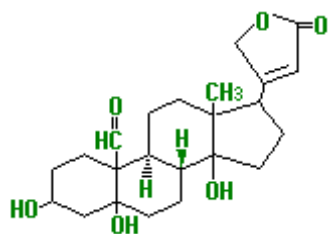
Toxicity

All parts, especially roots and berries, are toxic. As few as six berries have been reported to cause severe symptoms. *Actaea* species are closely related to plants in the genus *Aconitum*, a highly toxic plant genus which contains wolfbane and several varieties of monkshood. In some parts of Europe the powdered leaves, stems and flowers are used as an insecticide. Foliage and fruit are moderately toxic. Formerly protoanemonin was said to be found in fresh herb, but this couldn't be confirmed [2].

Adonis vernalis, *Adonis vologensis*, *Adonis aestivalis*

Phytoconstituents

Digitalis glycosides like adonidosid, adonivernosid, adonitoxine, cymarine, strophanthidine, cardenolide glycosides; convallatoxin, glycosides-cymarine, adonitoxine; saponin phytosterine, adonite, adonitoxin and cardiac glycosides (cardenolides) similar to those of digitalis.



Strophanthidine: $C_{25}H_{34}O_7$; CAS: 66-28-4

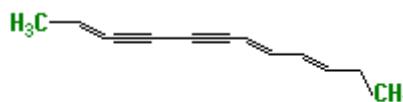
Toxicity

This very toxic plant contains more than 10 cardiac glycosides. Its epigeous parts contain toxic cardiac glycosides; its roots are also poisonous, still being researched. Adonis first excites the inhibitory nerves in the heart at the central end, increasing arterial tension, and later paralyzes the peripheral end of the vagus. It also excites the accelerating nerves, so that there occurs an interference between the two systems of cardiac innervation, resulting in a feeble and irregular heart action and finally in a total paralysis of the motor nerve supply of the heart. It also causes diuresis. The action is rapid and not cumulative [3].

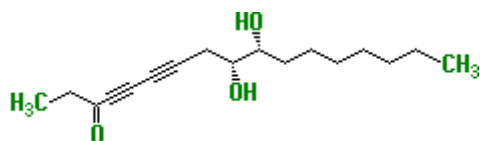
Aethusa cynapium

Phytoconstituents

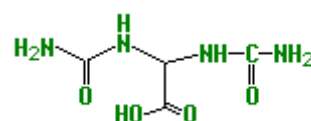
Toxic concentrations of polyenes also occur in *Aethusa cynapium* (fool's parsley) are also said to contain 'coniine-like volatile alkaloids'. Active ingredients: Online and cynopine, aethitsine, ethusanol; toxicity due to organic compounds polyenes or polyacetylenes. Polyacetylenes (aethusin, aethusanol A, B) and are known to contain several bioactive bisacetylenic alcohols.



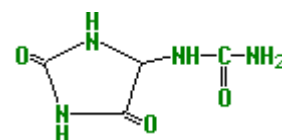
Aethusin: $C_{13}H_{14}$, CAS: 463-34-3



Panaxacol: $C_{16}H_{23}O_2$, CAS: 106828-96-0



Allantoic acid: $C_4H_8N_4O_4$; CAS: 99-16-1



Allantoin: $C_4H_6N_4O_3$; CAS: 97-59-6

Toxicity

Aethusin, related to cicutoxin. Although fairly toxic, fool's parsley has occasionally been used in folk medicine. The herb is sedative and stomachic. It has been used in the treatment of gastro-intestinal problems, especially in children, and also to treat convulsions and summer diarrhoea. Extreme caution in the use of this herb is advised; see the notes above on toxicity. Excitement on ingestion, then depression, paralysis of skeletal muscles, vomiting, diarrhoea, pupils dilated, death by suffocation, does not affect the heart. The roots mistaken for radish, leaves for Parsley. *Aethusa* chiefly affects nervous system/gastrointestinal system. It is used to treat violent vomiting, pains, convulsions, and even delirium, which all lead to exhaustion and sleepiness. This remedy is also used to strengthen the mind when it is weak and when concentration is difficult [4].

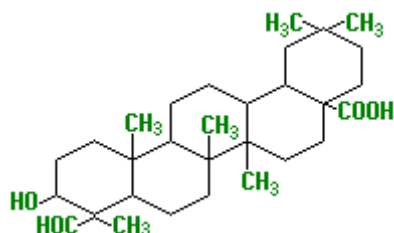
Agrostemma githago

Phytoconstituents

The toxin is primarily sapogenin githagenin (may be 5-7% of the weight of seeds). Sapogenin githagenin (agrostemmasaponins) is contained in seeds and amounts to 5-7% of their weight. Agrostin (lectin) and triterpenic saponins: githagenin (7%); agrostemmic acid (diureidoacetate or diureidoacetate).

Toxicity

Githagenin is toxic (destroyed at 50°C). This plant contains colloidal glycosides which contain the properties of saponin. Saponin-containing plants have a bitter taste and are not often eaten, but there have been reports of poisoning in horses. 3 g [of seeds] are considered toxic. The seeds are primarily responsible for poisonings from corncockle, however, all parts are suspected to be toxic.

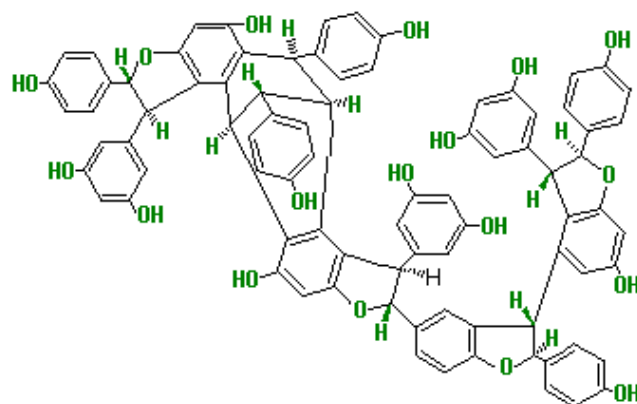


Githagenin: $C_{30}H_{46}O_4$; CAS: 639-14-5

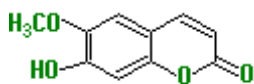
Ailanthus altissima

Phytoconstituents

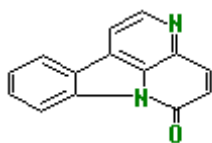
The root bark and stem bark contain quassinoids: ailanthone, ailanthinone, chaparrin, glaucarubol, glaucarubin, glaucarubinone, shinjudilactone, quassine, neoquassine, shinjulactones, ailantinols, quassinoid I, shinjuglycosides 1 α ,11 α -epoxy-2 β ,11 β ,12 β ,20-tetrahydroxypicrasa-3,13-(21)-dien-16-one, 1 α ,11 α -epoxy-2 β ,11 β ,12 α , 20-tetrahydroxypicrasa-3,13-(21)-dien-16-one; alkaloids: canthin-6-one, 1-methoxycanthin-6-one, 1-hydroxycanthin-6-one, canthin-6-one-3N-oxide, 5-hydroxymethylcanthin-6-one, 1-(1,2-dihydroxyethyl)-4-methoxy- β -carboline, β -carboline-1-propionic acid, 1-carbamoyl- β -carboline, 1-carbomethoxy- β -carboline; coumarins: scopoletin, isofraxidin, altissimacoumarins A, B. The wood contains alkaloids: canthin-6-one, 1-methoxycanthin-6-one, canthin-6-one-3N-oxide.



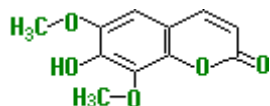
Upunaphenol A (Dipterocarpaceae): $C_{56}H_{42}O_{13}$ (Resveratrol Oligomer)



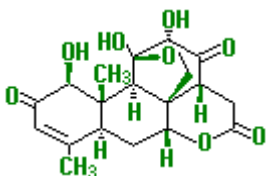
Scopoletin: $C_{10}H_8O_4$, CAS 92-61-5



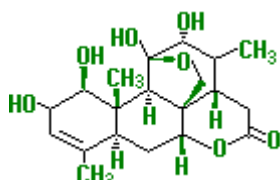
Canthin-6-one: $C_{14}H_8N_2O_2$, CAS: 75969-83-4



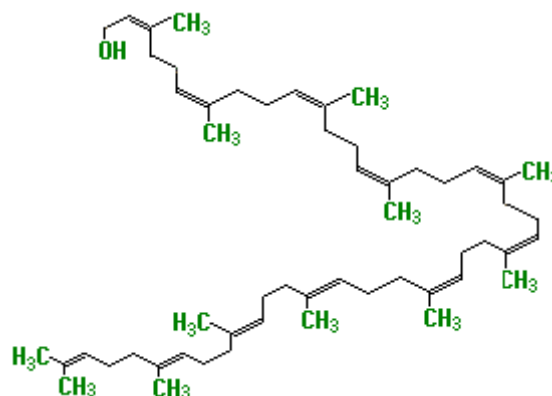
Isofraxidin: $C_{11}H_{10}O_5$, CAS: 486-21-5



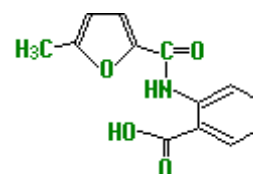
Ailanthone: $C_{20}H_{24}O_7$, CAS: 981-15-7



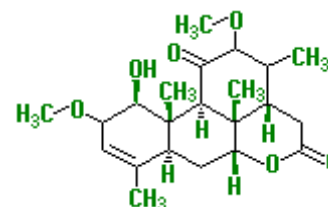
Chaparrin: $C_{20}H_{28}O_7$, CAS: 4616-50-6



Undecaprenol: $C_{55}H_{90}O$, CAS: 15575-14-1



Ailanthinone: $C_{13}H_{11}NO_4$, CAS: 423729-45-7



Quassine: $C_{22}H_{28}O_6$, CAS: 76-78-8

Seed contains quassinoids: shinjuglycosides A, B, C, D; sterols: ailanthosterols A and B. Leaf contains alkaloids: canthin-6-one, 1-methoxycanthin-6-one, 4-methoxy-1-vinyl- β -carboline, 1-methoxycarbonyl- β -carboline; flavonoids: apigenin, kaempferol, quercetin, isoquercetin, rutin, luteolin 7-O- β -(6''-galloyl glucopyranoside) or 12% tannin, quercetin, as well as isoquercetin, and alkaloid linuthine. Leaves/wood are high in cellulose and are used in paper-making. The crushed leaves and flowers are insect-repellent. The parts, when steeped in water, are said to yield an insecticidal solution. An aqueous extract of leaves contains a substance that is toxic to other tree seedlings.

Toxicity

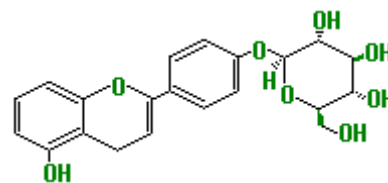
Leaves are toxic to domestic animals. Gardeners who fell the tree may suffer rashes. Observations are more violent than my own to sniffing the leaves, "The odour of the foliage is intensely disagreeable and can cause headache and nausea rhinitis and conjunctivitis. The pollen can cause hay fever" The sap is a skin and eye irritant. Pollen can cause allergic reactions. A yellow dye is obtained from the leaves.

Male flowers are conspicuous and ill smelling, attracting many insects. Female flowers are less odorous and less conspicuous [6].

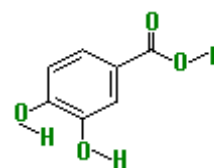
Allium Species

Phytoconstituents

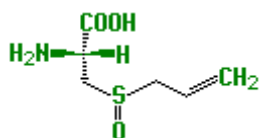
The bulb contains sulfur compounds: alliin, cycloalliin, isoalliin, allicin, dipropenyl disulfide, methylpropenyl disulfide, dipropyl trisulfide, dimethyl thiophene, L- γ -glutamyl-S-(1E)-1-propenyl-L-cysteine, propanethiol, 3-mercapto-2-methylpentan-1-ol; S-propenyl-L-cysteine sulfoxide, anthocyanins: peonidin-3,5-diglucoside, cyaniding-3,5-diglucoside, cyaniding-3-glucoside; Se-“alliins”: selenomethionine, selenocysteine, Se-methylselenocysteine; flavonoids: spiraeoside, quercetin, quercetin-3,4'-diglucoside, isorhamnetin-4'-glucoside, isorhamnetin-3,4'-diglucoside, kaempferol-4'-glucoside, quercetin-3,7,4'-triglucopyranoside, kaempferol-3-sophoroside-7-glucuronide, quercetin-3-sophoroside-7-glucuronide. The bulb also contains allicepin and protocatechuic acid.



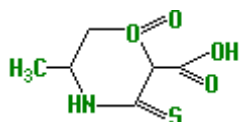
Spiraeoside: C₂₁H₂₀O₁₂, CAS: 20229-56-5



Protocatechuic acid: C₇H₆O₄, CAS: 99-50-3



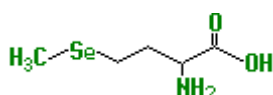
Alliin: C₆H₁₁NO₃S; CAS: 556-27-4



Cycloalliin: C₆H₁₁NO₃S, CAS: 455-41-4



Dipropenyl disulfide, C₆H₁₀S₂; CAS: 2179-57-9.



Selenomethionine: C₅H₁₁NO₂Se; CAS: 1464-42-2

Toxicity

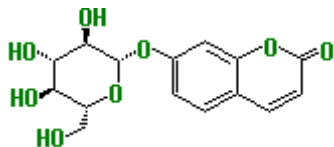
Calcium oxalate and possibly irritant proteins. Nevertheless, ingestion of onion and other *Allium* sp. are known to be toxic to many animal species, including dogs, cats, cattle, horses, sheep and goats. The signs pain and swelling of oral cavity, acute inflammation of oropharynx accompanied by salivation, pawing at the mouth, and drooling. Edema of the lips, tongue, and throat may be seen. *Allium* sp. contain organosulfoxides, particularly alk(en)yl cysteine sulfoxides, are responsible for their characteristic odor. Plants trauma, like chewing or cutting, converts the organosulfoxides to a complex mixture of sulfur-containing organic compounds that are responsible for the flavor and effects of these plants on animals. Allium organosulfur compounds appear to be readily absorbed through the gastrointestinal tract and are metabolized to highly reactive oxidants, have been implicated in onion-induced hemolytic anemia [7].

Ambrosia Species

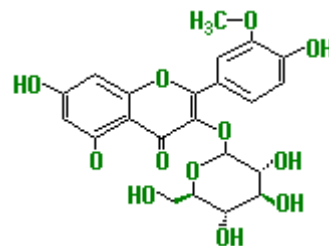
Phytoconstituents

The main components in the total extract are phenolcarboxylic acids (ferulic, isoferulic, caffeic, chlorogenic acids and caffeic acid glycoside) coumarins (scopoletin, scopolin, esculetin, esculin, umbelliferone, skimmin), and flavonoids (jaceidin, quercetin, isorhamnetin, isorhamnetin-3-rutinoside, quercimeritrin, isoquercitrin, and glycosides of xanthomicrol and 4', 5-dihydroxy-3,6,7,8-tetramethoxyflavone). Pseudoguaianolides also have skeleton of bicycle decane to which is associated a γ -lactonic ring, have a β -methyl group at C-5 position and are classified as ambrosanolides and helenanolides according to stereochemistry of methyl group at C10; in other words, ambrosanolides have β -methyl and helenanolides an α -methyl in this position. Polymethoxylated flavonoids have been identified in ambrosia: jaceidin (5,7,4'-trihydroxy-3,6,3'-trimethoxyflavone), xanthomicrol (4',5-dihydroxy-6,7,8-trimethoxyflavone), 4',5-dihydroxy-3,6,7,8-tetramethoxyflavone, and their glycosides. Sesquiterpene: chloroambrosin, ambrosin, damsine, neoambrosin, farnserin, hymenolin, hymenin, stamonin-b, anhydrofarnserin; triterpenes: s-amyrin; flavonoids: apigenin;

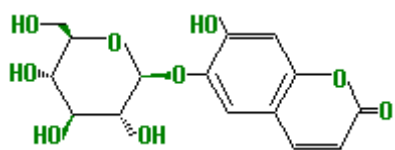
coumarins; sterols: β -sitosterol; tannin; and volatile oil: carvone, camphor, caryophyllene, cineole.



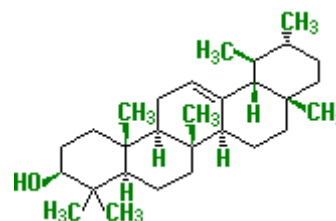
Skimmin: $C_{15}H_{16}O_8$, CAS: 93-39-0



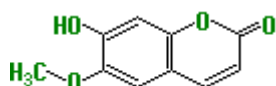
Isorhamnetin-3-O-glucoside: $C_{22}H_{22}O_{12}$, CAS: 5041-82-7



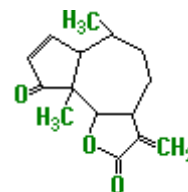
Esculin: $C_{15}H_{16}O_9$, CAS: 531-75-9



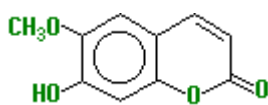
S-amyrin: $C_{30}H_{50}O$, CAS: 559-70-6



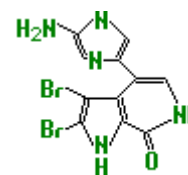
Scopoletin: $C_{10}H_8O_4$, CAS: 92-61-5



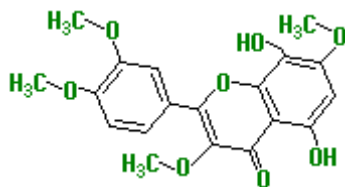
Damsin (ambrosin): $C_{15}H_{20}O_3$, CAS: 1216-42-8



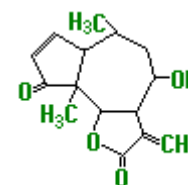
Scopolin: $C_{16}H_{18}O_9$, CAS: 531-44-2



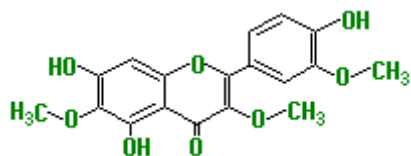
Hymenin: $C_{11}H_{11}Br_2N_5$, CAS: 105748-62-7



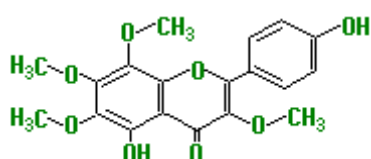
4,5-dihydroxy-3,6,7,8-tetramethoxyflavone, $C_{19}H_{18}O_8$, CAS: 28914-17-2



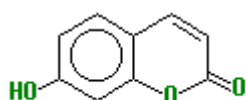
Carpesiolin: $C_{15}H_{20}O_4$, CAS: 2004-10-25



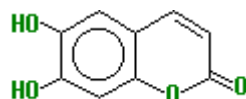
Jaceidin: $C_{18}H_{16}O_8$, CAS: 10173-01-0



Xanthomicrol: $C_{18}H_{16}O_7$, CAS: 16545-23-6



Umbelliferone: $C_9H_6O_3$, CAS: 93-35-6



Esculetin: $C_9H_6O_4$, CAS: 305-01-1

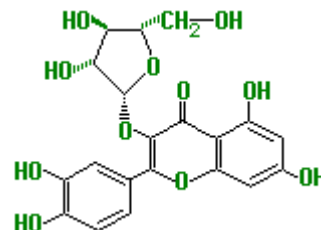
Toxicity

Ambrosia sp., both in their native range and in invaded areas, are of public health concern due to the allergenic properties of their pollen. The NDA panel concluded that inhalation of plant pollen causes rhinoconjunctivitis and asthma, with skin allergies and food allergy playing minor roles. *Ambrosia* may cross-sensitize patients to other allergens, including food allergens [8].

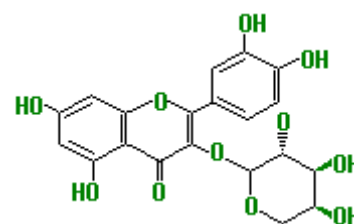
Andromeda polifolia

Phytoconstituents

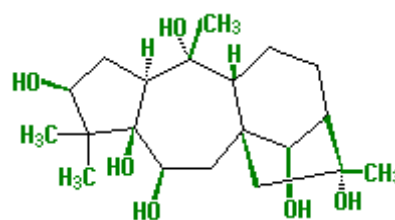
Gardenoside, guaijaverine and avicularine, a new flavonol-dipentose named polifolioside, neurotoxic diterpenoids: andromedotoxin and grayanotoxin.



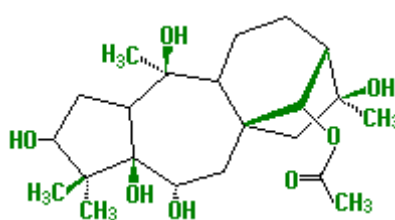
Guajavarin: $C_{20}H_{18}O_{11}$, CAS: 22255-13-6



Avicularin: $C_{20}H_{18}O_{11}$, CAS: 572-30-5



Grayanotoxin: $C_{20}H_{34}O_6$, CAS: 4678-45-9



Andromedotoxin: $C_{20}H_{34}O_6$, CAS: 4720-09-6

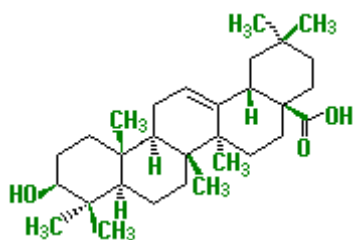
Toxicity

These toxins occur throughout the plant, including the nectar, and can be found in honey. The leaves of most of these species are leathery or bitter, so their palatability is rather low. No specific antidote is known but subcutaneous injection of morphine has been used successfully in goats. A toxin, called 'andromedotoxin' can be released from the plant if it is infused in boiling water. See notes below regarding use of the plant for tea [9].

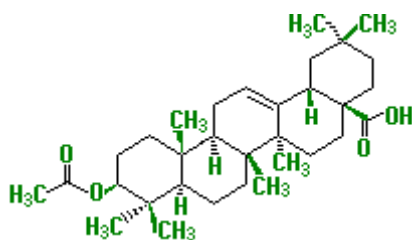
Anemone Species

Phytoconstituents

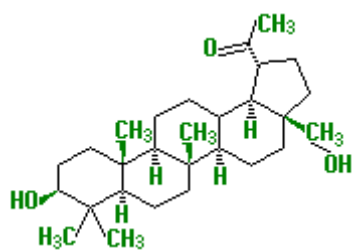
Ranunculin is converted enzymatically to protoanemonin. The rhizome contains triterpenoid saponins: raddeanins A, B, C, D, E, F, raddeanosides R₀, R₂...R₁₈, hederasaponin B, eleutheroside K, hederacholichiside F, leontoside D; triterpenoids: oleanolic acid, acetyloleanolic acid, betulin, betulinic acid, lupeol; lactone: ranunculin. The aerial part also contains raddeanin A.



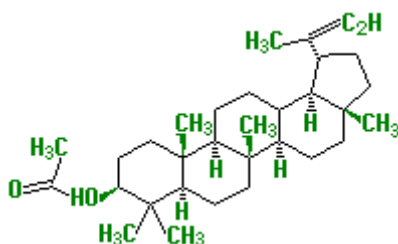
Oleanolic acid: C₃₀H₄₈O₃, CAS: 508-02-1



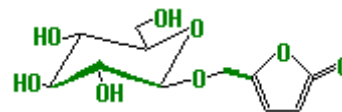
Acetyloleanolic acid: C₃₂H₅₀O₄, CAS: 4339-72-4



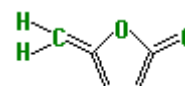
Betulin: C₃₀H₅₀O₂, CAS: 473-98-3



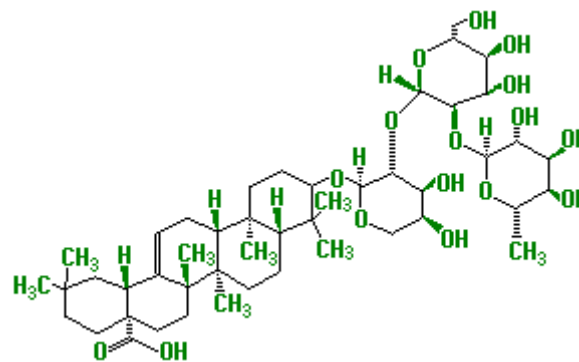
Lupeol: C₃₂H₅₂O₂, CAS: 1617-68-1



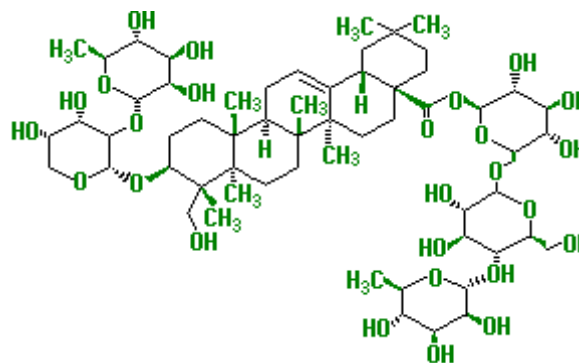
Ranunculin: C₁₁H₁₆O₈, CAS: 89412-79-3



Protoanemonin: C₅H₄O₂, CAS: 108-28-1



Raddeanin A: C₄₇H₇₆O₁₆, CAS: 89412-79-3



Hederasaponin B: C₅₉H₉₆O₂₆, CAS: 14216-03-6

Toxicity

The toxin (protoanemonin) is quite irritating to mucous membranes. Blisters are commonly seen after the plant is chewed. Ingestion is rare. If ingested, signs of severe, hemorrhagic gastroenteritis are seen and may lead to shock [10].

Chemical structure diversity and their biodiversity some the plants in overview of the extremely various. Plants are a rich source of bioactive phytochemicals or bio nutrients and on toxicity of active plant principles, which must be known, to determine their safety use.

Additionally many others, this list do not exhaust all toxic plants (Only some of species beginning with the letter A).

References

1. Turabekova MA, Rasulev BF (2005) QSAR analysis of the structure-toxicity relationship of aconitum and delphinium diterpene alkaloids. *Chemistry of Natural Compounds*, Springer 41: 213-219.
2. Ikezawa NI, Sato KF (2008) Molecular Cloning and Characterization of CYP80G2, a Cytochrome P450 That Catalyzes an Intramolecular C-C Phenol Coupling of (S)-Reticuline in Magnoflorine Biosynthesis, from Cultured *Coptis japonica* Cells. *J Biol Chem* 283: 8810-8821.
3. Woods LW, George LW, Anderson ML, Woods DM, Filigenzi MS, et al. (2007) Evaluation of the toxicity of *Adonis aestivalis* in calves. *J Vet Diagn Invest* 19: 581-585.
4. Madaan R, Kumar S, Bansal G, Sharma A (2011) Plant Drugs Used to Combat Menace of Anxiety Disorders. *Pharmacogn Commun* 1: 1-51.
5. Al Nimer MS, Al Deen SM, Lateef AZW, Al Kayar IT (2011) Magnetized water induces changes in the antioxidant properties of some medicinal plants extracts. *Int J Green Pharm* 5: 145-148.
6. Schall MJ, Davis DD (2009) *Ailanthus altissima* Wilt and Mortality: Etiology. *Plant Dis* pp: 747-751.
7. Zhang Y (2006) Onion, a vegetable as well as a medicine. *Health Preserving* 27: p 635.
8. Vitalos M, Karrer G (2009) Dispersal of *Ambrosia artemisiifolia* seeds along roads: the contribution of traffic and mowing machines. In: *Biological Invasions: Towards a Synthesis*. *J Neobiota* 8: 53-60.
9. Pojar J, MacKinnon A (2004) *Plants of the Pacific Northwest Coast*. Vancouver: Lone Pine Publishing p: 53.
10. Xia ZT, Liu DY, Wang XY, Liu KF, Zhang PC (2004) Studies on the chemical constituents of *Anemone raddeana* Regel. *Acta Chimica Sinica* 62: 1935-1940.