

## Dentigerous cyst Associated with Compound Odontome

Sachin A Gunda<sup>1</sup>, Ankita R Hingmire<sup>1</sup>, Anil T Patil<sup>1\*</sup>, Anand L Shigli<sup>1</sup> and Dilip Magdum<sup>2</sup>

<sup>1</sup>Pedodontics and Preventive Dentistry, Department of Pedodontics and Preventive Dentistry, Bharati Vidyapeeth Deemed University Dental College and Hospital, Sangli, Maharashtra, India

<sup>2</sup>Department of Oral Pathology, Bharati Vidyapeeth Deemed University Dental College and Hospital, Sangli, Maharashtra, India

### Abstract

The most common of the odontogenic tumours of the jaws are odontomas. Occasionally, a dentigerous cyst might develop from epithelial lining of fibrous capsule of an odontoma. We present a case of a 10-year-old boy suffering from apparent ectopic partial eruption of mandibular right first premolar associated with an impacted compound odontome related with a dentigerous cyst.

**Keywords:** Compound Odontome; Dentigerous cyst; Oral

### Introduction

The most common of the odontogenic tumors of the jaws are odontomas. They are mixed tumors, comprised of both mesenchymal and epithelial cells that present a complete dental tissue differentiation (enamel, dentin, cementum and pulp) [1]. Odontomas are defined as nonaggressive hamartomatous developmental malformations or lesions of odontogenic origin which consists of enamel, dentin, cementum and pulpal tissue by the World Health Organization (WHO). Odontomas are of two types namely *complex odontomas* and *compound odontomas*. *Complex odontomas* are malformation where dental tissues are present, but arranged in a more or less disorderly pattern; and *compound odontomas* are malformation having all dental tissues in a pattern that is more orderly arranged. Etiology is still unknown of these hamartomas odontomas [2]. Large odontomas may cause delayed eruption and cystic development [1]. Dentigerous cysts are always associated with a developing or unerupted tooth bud [3]. Less frequently, they can be found in relation with supernumerary teeth, odontomas or unerupted deciduous teeth. Dentigerous cyst is rarely seen associated with an erupted tooth [4]. Herein we have documented a case of dentigerous cyst associated with compound odontome in the mandibular left first premolar region.

### Case Report

A 10-year-old boy reported to the pedodontics department of the Bharati Vidyapeeth Dental College & Hospital, Sangli with chief complaint of malaligned right lower back tooth. Patient's mother gave history of pain and swelling associated with the same tooth one month back. The pain was mild in nature associated with intra-oral swelling. The family history and medical histories were non-contributory. No history of trauma to the face or mouth was recalled. Extra-oral examination was non-significant (Figure 1). Intra-oral examination revealed mixed dentition period, rotated right mandibular second premolar and buccally erupting right mandibular first premolar (Figure 2). No inflammatory signs were noted in the gingiva and alveolar bone but a bulge appeared on the buccal surface in the right lower premolar region (Figure 2). A panoramic radiographic examination showed an unerupted supernumerary tooth. A well demarcated unilocular radiolucent follicle occupied by a radio-opaque mass was observed (Figure 3). The overlying alveolar bone was normal. The provisional diagnosis was a para-premolar, which lead to ectopic eruption of the first premolar. A full thickness mucoperiosteal flap was reflected buccally between the right mandibular first and second premolar. Surgical removal of the odontome and the cyst lining was accomplished

under local anesthesia. A thin layer of bone over the buccal surface was removed and the tooth like structure was exposed (Figure 4); which was removed along with the cystic lining (Figure 5). The extraction cavity was curreted and was devoid of granulation tissue. The flap was replaced and secured with sutures. Histopathologically, the single rooted tooth like structure was exhibiting normal dental tubules, predentin and pulpal tissue was observed. Hence histopathological



Figure 1: Extraoral Photograph.



Figure 2: Intraoral Photograph.

\*Corresponding author: Patil AT, Department of Pedodontics and Preventive Dentistry, Bharati Vidyapeeth University Dental College and Hospital, Sangli 416414, India, Tel: +91 9850983500; E-mail: [dranilp0888@gmail.com](mailto:dranilp0888@gmail.com)

Received September 19, 2016; Accepted October 20, 2016; Published October 28, 2016

Citation: Gunda SA, Hingmire AR, Patil AT, Shigli AL, Magdum D (2016) Dentigerous cyst Associated with Compound Odontome. *Pediatr Dent Care* 1: 121. doi: 10.4172/2573-444X.1000121

Copyright: © 2016 Gunda SA, et al. This is an open-access article distributed under the terms of the Creative Commons Attribution License, which permits unrestricted use, distribution, and reproduction in any medium, provided the original author and source are credited.

evaluation confirmed it to be a compound type of odontome (Figure 6). The biopsy specimen was sent to the pathology lab for investigation which was confirmed as 'dentigerous cyst' (Figure 7). The post-operative period was uneventful (Figures 8-10). The patient is being monitored at regular intervals. This case shows a compound odontoma evidenced on radiograph by multiple denticles encircled and a radiolucent area in the right first premolar region of mandible associated a dentigerous cyst.



Figure 3: Pre-Operative OPG.



Figure 4: Mucoperiosteal flap raised.



Figure 5: Specimen of compound odontome with dentigerous cyst.

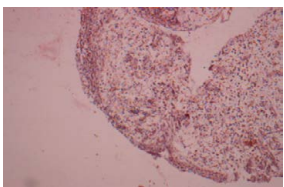


Figure 6: Histopathological image of compound odontome

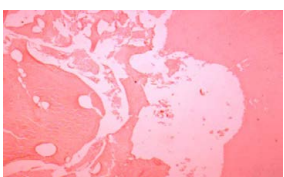


Figure 7: Histopathological image dentigerous cyst.

## Discussion

Odontomas are hamartomas made up of enamel, dentin, cementum and occasionally pulp. They are non-aggressive in behavior and are slow growing benign tumors. They are classified as *compound* if there is superficial anatomic similarity to even rudimentary teeth and *complex*, when the calcified tissue present as an irregular mass composed mainly of mature tubular dentin. Compound odontomas are more common than complex and are present in the ratio of 2:1. Complex odontomas are seen in the posterior region of jaw and compound odontomas are seen more in the anterior maxilla. Clinically odontomas can be intra-osseous and extra-osseous. Intra-osseous odontomas occur inside the bone and may erupt. Extra-osseous odontomas (erupted odontomas) found in soft tissue covering the tooth bearing portion of the jaws. The odontomas are found commonly in the first two decades of life, with no gender preferences. Odontomas are usually asymptomatic but clinical signs can be seen like unerupted permanent teeth, pain, over-retained deciduous teeth, tooth displacement and expansion of cortical bone. Anesthesia in the lower lip and swelling in the affected region are the other symptoms.

Odontomas have density that is more than that of bone and equal to or greater than that of tooth and is seen as a well-defined radio-opacity in bone, which contains foci of variable density. A radiolucent halo, peculiarly surrounded by thin sclerotic line, surrounds the radio-opacity. The radiolucent zone is the connective tissue capsule of a normal tooth follicle [5]. The compound odontoma was defined as an injury that stems from an exaggerated proliferation of the dental lamina, showing all dental tissues in an orderly manner and are usually presented in the form of denticles. Radiographically compound odontoma are a group of structures similar to the teeth can have different sizes and shapes, encircled by a radiolucent area. In the complex odontoma, dental tissues are found like an amorphous



Figure 8: Post-operative intra-oral photograph after 15 days.



Figure 9: Post-operative OPG after 1 month.

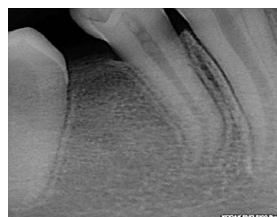


Figure 10: Follow-up RVG after 6 months.

calcified mass and radiographically observed as uniform radiopacity with irregular edges surrounded by radiolucent space [6,7]. Odontomas are inherited through a mutant gene or interference, possibly post natal, with genetic control of tooth development was suggested by *Hitchin*. As a consequence of their odontogenic nature, including epithelial and mesenchymal tissue odontomas can form cystic transformation into dentigerous cyst. It results from the cystic degeneration of enamel organ after partial or complete crown development, cystic transformation of the follicle associated with the unerupted tooth may also happen when its eruption is impeded by the odontoma [5]. The follicular cyst, which is also called as a dentigerous cyst are true developmental cysts predominantly affecting mandibular third molars of young patients, followed by maxillary canine, mandibular premolar and maxillary third molar.

Dentigerous cyst associated with an unerupted compound odontome is an extremely rare entity which has been reported in our case. Dentigerous cyst is usually asymptomatic and can be associated with mobility or displacement of teeth, radiographically characterized by a radiolucent lesion with a well-defined sclerotic margin associated with a crown of an unerupted tooth. Radiographically, three variants of dentigerous cysts namely central, lateral and circumferential have been described. A large dentigerous cyst may appear multilocular radiographically owing to the persistence of bone trabeculae within the radiolucency [4]. Histopathologically it comprises of a fibrous conjunctive tissue capsule and an epithelial lining of flattened cells with either presence or absence of keratinization. Complications related to dentigerous cysts are pathological bone fracture, loss of permanent teeth, bone deformities and development of ameloblastoma or malignancies such as squamous cell carcinoma and intra-osseous mucoepidermoid carcinoma.

The treatment of odontoma is surgical excision, which has great success with low recurrence rare. The treatment for dentigerous cysts is surgical excision with removal of the involved tooth, in few cases marsupialization of the lesion is needed to reduce bone defect before

surgical intervention [6]. The surgical exposure showed the cystic lesion attached to the neck of the unerupted tooth. Hence it was treated by surgical excision of the lesions and the associated tooth. The size of the lesion did not require marsupialization before removal and a satisfactory amount of surrounding bone was preserved.

## Conclusion

The compound odontoma is benign malformation usually asymptomatic, with slow evolution and may be associated with other disorders such as dentigerous cyst as outlined in this case. The treatment of choice is surgical excision of the lesions along with the tooth associated to the cyst. Surgical excision of odontome with cyst in children should be performed with careful, imperative, immediate planning; preventing injury to vital structures and developing occlusion.

## References

1. Sales MG (2009) Cavalcanti. Complex odontoma associated with dentigerous cyst in maxillary sinus: case report and computed tomography features. *Dentomaxillofacial Radiology* 38: 48-52.
2. Amailuk P, Grubor D (2008) Erupted compound odontoma: case report of a 15-year-old Sudanese boy with a history of traditional dental mutilation. *British Dental Journal*, 204: 11-14.
3. Gulses A, Karacayli U, Koymen R (2009) Dentigerous Cyst Associated With Inverted and Fused Supernumerary Teeth in a Child: A Case Report. *OHDMBSC* 8: 1-4.
4. Shergill AK, Singh P, Solomon MC, Singh PG (2014) Dentigerous Cyst Associated with an Erupted Tooth – An Unusual Presentation. *International Journal of Scientific Study* 2: 1-3.
5. Shah A, Singh M, Chowdhury S (2010) Complex Odontoma associated with Dentigerous cyst. *Int Journal Of Clinical Dental Science* 1: 1-4.
6. Melo RB, Damasceno, Celio YES, Couto da Cunha Junior A, Pontes IV (2015) Compound odontoma associated with dentigerous cyst in the anterior mandible -Case Report. *RSBO* 12: 98-102.
7. Tomizawa M, Otsuka Y, Noda T (2005) Clinical observations of odontomas in Japanese children: 39 cases including one recurrent case. *Int J Paediatr Dent* 15: 37-43.

Citation: Gunda SA, Hingmire AR, Patil AT, Shigli AL, Magdum D (2016) Dentigerous cyst Associated with Compound Odontome. *Pediatr Dent Care* 1: 121. doi: [10.4172/2573-444X.1000121](https://doi.org/10.4172/2573-444X.1000121)

## OMICS International: Open Access Publication Benefits & Features

### Unique features:

- Increased global visibility of articles through worldwide distribution and indexing
- Showcasing recent research output in a timely and updated manner
- Special issues on the current trends of scientific research

### Special features:

- 700+ Open Access Journals
- 50,000+ Editorial team
- Rapid review process
- Quality and quick editorial, review and publication processing
- Indexing at major indexing services
- Sharing Option: Social Networking Enabled
- Authors, Reviewers and Editors rewarded with online Scientific Credits
- Better discount for your subsequent articles

Submit your manuscript at: <http://www.omicsgroup.org/journals/submission>