

## Effect of Environmental Factors on Phenolic Compounds in Leaves of *Syzygium jambos* (L.) Alston (Myrtaceae)

Wilma P Rezende<sup>1</sup>, Leonardo L Borges<sup>1\*</sup>, Danillo L Santos<sup>1</sup>, Nilda M Alves<sup>2</sup> and José R Paula<sup>1</sup>

<sup>1</sup>Natural Products Research Laboratory, Federal University of Goiás, Brazil

<sup>2</sup>School of Health Sciences, Department of Pharmacy and Biochemistry, University of Rio Verde, Brazil

### Abstract

**Background:** *Syzygium jambos* (L.) Alston, Myrtaceae, is a plant widely used for the treatment of toothache, mouth scores, cough, wound dressing and infectious diseases. Among the metabolite groups identified in leaves of *S. jambos* are the polyphenols, highlighting tannins and flavonoids, related to the pharmacological properties of this plant. Studies on the influence of environmental factors over production of secondary metabolites in *S. jambos* are important because they contribute with knowledge for its cultivation and harvest, besides establish quantitative parameters of secondary metabolites in the plant drug. The aim of this paper was to evaluate the effects of environmental factors on levels of phenolic compounds in *S. jambos* leaves.

**Materials and Methods:** Total phenols, tannins, flavonoids and mineral nutrients were quantified in leaves, while soil fertility was also analyzed in two different sites and in two months (January and July) from ten specimens (five from each locality).

**Results:** The data were statistically analyzed and the results have shown that the levels of phenolic compounds in *S. jambos* leaves were influenced by environmental factors, particularly some foliar nutrients (P, K, Ca, Na, Fe, Co and Mo), soil nutrients (Al, K, S, Na and Mn) and climatic factors (temperature and rainfall).

**Conclusion:** The results obtained in this work will be useful for knowledge of the best conditions for leaves collection from *S. jambos*, besides the data analyzed suggested that environmental factors can affect the levels of tannins in this species.

**Keywords:** Myrtaceae; Secondary metabolism; Environmental factors; Seasonality

### Introduction

*Syzygium jambos* (L.) Alston, also known as *Eugenia jambos* or *Jambosa jambos*, is a medicinal plant traditionally used for the treatment of toothache, mouth scores, cough, wound dressing and infectious diseases [1]. Anti-inflammatory activity was also reported for *S. jambos* leaves extract and its isolated flavonoid glycosides and these properties is closely related to analgesic activity [2-4].

Environmental factors, such as soil composition, rainfall, temperature and humidity, can influence the levels of phenolic compounds in medicinal plants [5-7]. The development of the plant can affect the tannin amounts due a response to the environmental changes [8-10]. Environmental influence over secondary metabolites and studies about chemical variability were investigated in some species from Myrtaceae family [11-15]. In *S. jambos* species, the chemical variability and environmental factors which can influence essential oils were also investigated [16].

Regarding the lack of data on the influence of environmental factors on the production of phenolic metabolites in leaves of *S. jambos*, this study was carried out in order to obtain new data that would inform the appropriate cultivation and sampling of this plant.

### Materials and Methods

#### Plant material

The plant material was collected from ten wild specimens of the plant located in two different municipalities in Goiás state, Brazil: Rio Verde (17°48'33.9" S; 50°56' 39,1" W; 710 m), (17°46'33.6" S; 50°54'13.2" W; 688 m), (17°46'27.1" S; 50°54'52.2" W; 750 m), (17°46'9.6" S; 50°54'52.6" W; 781 m), (17°46'41.2" S; 50°56'43.1" W; 758 m) and Nova América (15°01'12" S; 49°52'33.4" W; 782 m), (15°01'48.7" S; 49°51'27.9" W; 657 m), (15°01'48.6" S; 49°51'29.9"

W; 652 m), (15°02'58.5" S; 49°51'53.4" W; 614 m). The samples were collected in January and July 2011 and received botanic identification by Prof. José Realino de Paula. A voucher specimen has been deposited at the Herbarium of Federal University of Goiás under code number 47579. The samples were air-dried in a chamber at 40°C and ground into a powder.

#### Colorimetric assays

**Total phenolics assay (TP):** Ferric chloride was added to each extract under alkaline conditions to result a colored complex with phenols, which was read at 510 nm, following the Hagerman and Butler [17], adapted by Waterman and Mole [18]. All solutions were analyzed in triplicate. The standard curve was constructed with tannic acid at the following dilutions: 0.10, 0.15, 0.20, 0.25 and 0.30 mg/mL.

**Protein Precipitation assay (PP):** Hagerman and Butler [17] adapted by Waterman and Mole [19] uses Bovine Serum Albumine solution (BSA, 1.0 mg/mL) in 0.2M acetate buffer (pH 4.9). The extract solutions were precipitated with BSA and after centrifugation, the precipitate was dissolved in sodium dodecyl sulfate/triethanolamine solution and the tannins were complexed with ferric chloride and the colored complex was read at 510 nm. All solutions were analyzed in triplicate. The standard curve was

\*Corresponding author: Leonardo Luiz Borges, Natural Products Research Laboratory, Faculty of Pharmacy, Federal University of Goiás, Brazil, Tel: +55-62-3209-6183; E-mail: [leonardoquimica@gmail.com](mailto:leonardoquimica@gmail.com)

Received May 21, 2015; Accepted June 16, 2015; Published June 22, 2015

**Citation:** Rezende WP, Borges LL, Santos DL, Alves NM, Paula JR (2015) Effect of Environmental Factors on Phenolic Compounds in Leaves of *Syzygium jambos* (L.) Alston (Myrtaceae). Mod Chem appl 3: 157. doi:10.4172/2329-6798.1000157

**Copyright:** © 2015 Rezende WP, et al. This is an open-access article distributed under the terms of the Creative Commons Attribution License, which permits unrestricted use, distribution, and reproduction in any medium, provided the original author and source are credited.

constructed with tannic acid at the following dilutions: 0.10, 0.20, 0.30, 0.40 and 0.50 mg/mL.

**Total flavonoids assay (Fv):** The methanolic extract was directly read at 361 nm [20]. All solutions were prepared in triplicate. The standards curves were prepared with rutin at the dilutions: 0.010, 0.015, 0.020, 0.025, 0.030 mg/mL.

### Climatic data

Average temperature and average daily precipitation for the periods were collected from the official site of the National Institute for Space Research (Instituto Nacional de Pesquisas Espaciais) [21].

### Chemical analysis of leaves and soil

Chemical analysis of soil (500 g) and leaf samples (15 g) was performed at the Solocria Agricultural Laboratory, following standard procedures [22]. The nitrogen (N) was extracted by digestion with H<sub>2</sub>SO<sub>4</sub> and catalysts. The minerals Phosphorus (P), Potassium (K), Calcium (Ca), Magnesium (Mg), Sulfur (S), Copper (Cu), Iron (Fe), Manganese (Mn) and Zinc (Zn) were extracted by digestion with HClO<sub>4</sub> and HNO<sub>3</sub>.

The soil samples were collected at a depth of 0-20 cm in four locations around each specimen of *S. jambos*, subsequently homogenized and then air dried. The pH was determined in a volume of water-soil at 1:1. Ca, Mg and Al were extracted with KCl 1M, and P, K, Zn, Cu, Fe and Mn were extracted with Mehlich's solution. Organic matter (OM), Cation Exchange Capacity (CEC), potential acidity (H+Al), base saturation (V) and aluminum saturation (m) were determined by standard methods [22].

The quantitative determination of minerals in leaves and soil was performed according to the methodology described by Silva [22]. Nitrogen was determined by distillation (semi-micro Kjeldahl method), phosphorus by colorimetry, potassium by flame photometry and sulfur by turbidimetry. Calcium, magnesium, copper, iron, manganese and zinc were determined by atomic absorption.

### Statistical analyses

The relationship between phenolic compounds found in leaves of *S. jambos* and environmental variables were analyzed by stepwise Multiple Regression and Pearson's Correlation Analysis implemented using SAS GLM (General Linear Models) and SAS CORR (Correlation test) procedure, respectively [23]. Cluster Analysis was also applied to study the similarity of samples on the basis of constituent distribution. The hierarchical clustering was performed according to the Ward's variance minimization method [24]. For these analyses were employed the software's SAS (Statistical Analysis System) and Statistica 7.

### Results

Tables 1-4 present the environmental data. The phenolic compounds of leaves are shown in Table 5.

The following equations were obtained by stepwise Multiple Regression with significant variables (*p*-values less than 0.10 to entry and stay variables in model):

$$TP(\%)=15.03+0.0045 Fe_s+0.0444 Na_1 (R^2=0.4540; R=0.6738) (1)$$

$$PP(\%)=4.209+0.2817 Cu_s+0.0022 Fe_s+0.3349 N_1 (R^2=0.5555; R=0.7453) (2)$$

$$Fv(\%)=-0.3819+0.0503 Cu_s+0.1324 Ca_1+0.2889 Mg_1+0.0989 Cu_1+0.018 Zn_1+3.52 Co_1 (R^2=0.8736; R=0.9347) (3)$$

### Discussion

The Table 6 showed that potassium levels were negatively correlated with PP and Fv (weak correlation; *R*<0.5), this result can be attributed to fact that the levels of this macronutrient possess consistent positive capacity to reducing the incidence of diseases, suggesting a mechanism of compensation for the lack of K, capable to increasing resistance to pathogens by synthesis of phenolic compounds [25,26]. This correlation was also observed to *Myrcia tomentosa* species, which belongs to the same family of *S. jambos* [12].

Multiple coefficient of determination (*R*<sup>2</sup>) means the proportion of the total variation that is explained by the regression model, so when *R*<sup>2</sup> is higher, the model fits better to data [27]. The value of *R*<sup>2</sup> is 0.8736 for Equation 3, showing that there are 87.36% changes in response variables (total phenols). By comparing models, the Equation 3 is better model fits to the data than the others models.

Multiple correlation coefficient (*R*) is employed to verify how far the relationship between one dependent variable and a set of independent variables [28]. The value of *R* is 0.9347 for Equation 1 and shows the multiple correlation strength between flavonoids and Cu<sub>s</sub>, Ca<sub>1</sub>, Mg<sub>1</sub>, Cu<sub>1</sub>, Zn<sub>1</sub> and Co<sub>1</sub>. The foliar nutrients were the principal set of environmental variables that can influence the levels of flavonoids in leaves of *S. jambos*. The total phenols and tannins by protein precipitation presented strong multiple correlation (*R*>0.7) with its sets of independent variables.

The tannins presented negative correlation with temperature (Table 6), with *R*=-0.41778. The increased levels of phenolic compounds in the leaves may be related to increased activity of phenylalanine ammonialyase (PAL) at lower temperatures, given the fact that PAL is an important enzyme in the biogenesis of various phenolic compounds, including tannins, which could explain the negative correlation found [29,30]. The same behaviour was observed in bananas that were stored in different temperatures,

Sample	Precipitation (mm)	Temperature (°C)
NA01/Jan/2011	11.93	24.48
NA02/Jan/2011	11.93	24.48
NA03/Jan/2011	11.93	24.48
NA04/Jan/2011	11.93	24.48
NA05/Jan/2011	11.93	24.48
RV01/Jan/2011	8.29	23.9
RV02/Jan/2011	8.29	23.9
RV03/Jan/2011	8.29	23.9
RV04/Jan/2011	8.29	23.9
RV05/Jan/2011	8.29	23.9
NA01/Jul/2011	-	21.62
NA02/Jul/2011	-	21.62
NA03/Jul/2011	-	21.62
NA04/Jul/2011	-	21.62
NA05/Jul/2011	-	21.62
RV01/Jul/2011	-	21.5
RV02/Jul/2011	-	21.5
RV03/Jul/2011	-	21.5
RV04/Jul/2011	-	21.5
RV05/Jul/2011	-	21.5

NA: Nova América; RV: Rio Verde

**Table 1:** Climate data for the collection sites in the period of January 2011 and July 2011. Mean precipitation (mm) and mean temperature (°C).

Sample	Cu mg/dm <sup>3</sup>	Fe mg/dm <sup>3</sup>	Mn mg/dm <sup>3</sup>	Zn mg/dm <sup>3</sup>	P mg/dm <sup>3</sup>	K mg/dm <sup>3</sup>	Ca mg/dm <sup>3</sup>	Mg mg/dm <sup>3</sup>
NA01/Jan/2011	6.00	310.00	34.00	20.00	1.00	10.00	5.00	1.70
NA02/Jan/2011	5.00	286.00	25.00	23.00	0.90	8.00	5.20	1.60
NA03/Jan/2011	5.00	276.00	24.00	22.00	1.20	10.60	4.90	1.50
NA04/Jan/2011	4.00	240.00	20.00	21.00	1.30	9.80	5.40	1.70
NA05/Jan/2011	7.00	243.00	18.00	19.00	1.20	8.40	4.70	2.20
RV01/Jan/2011	8.00	370.00	25.00	20.00	1.00	8.00	5.20	1.60
RV02/Jan/2011	5.00	305.00	22.00	21.00	1.00	8.00	5.50	1.60
RV03/Jan/2011	6.00	228.00	47.00	16.00	1.10	9.20	6.00	1.40
RV04/Jan/2011	6.00	202.00	61.00	16.00	1.40	9.60	6.20	1.60
RV05/Jan/2011	5.00	294.00	29.00	18.00	1.00	8.80	5.80	1.80
NA01/Jul/2011	4.00	241.00	29.00	11.00	1.00	7.60	5.20	1.70
NA02/Jul/2011	2.00	154.00	20.00	10.00	1.10	6.80	4.20	1.80
NA03/Jul/2011	3.00	367.00	19.00	11.00	1.00	8.00	4.40	1.60
NA04/Jul/2011	3.00	141.00	22.00	14.00	1.10	8.80	6.20	1.50
NA05/Jul/2011	3.00	148.00	24.00	14.00	1.20	8.60	6.50	1.60
RV01/Jul/2011	4.00	270.00	28.00	13.00	1.00	4.80	5.00	2.50
RV02/Jul/2011	4.00	363.00	22.00	14.00	1.10	6.40	6.00	1.80
RV03/Jul/2011	4.00	367.00	45.00	11.00	1.20	8.60	5.20	1.70
RV04/Jul/2011	6.00	345.00	58.00	11.00	1.20	8.00	5.40	1.60
RV05/Jul/2011	2.00	311.00	53.00	13.00	1.40	8.60	5.10	1.80

NA: Nova América; RV: Rio Verde

**Table 2:** Levels of mineral nutrients and fertility parameters of soil from each sample collection site.

Sample	H+Al cmolc/dm <sup>3</sup>	Al cmolc/dm <sup>3</sup>	CEC cmolc/dm <sup>3</sup>	O.M. %	M %	V %	Ca/CEC %	Mg/CEC %	K/CEC %
NA01/Jan/2011	2.1	0.0	4.54	7.00	0.00	53.66	33.04	8.81	11.23
NA02/Jan/2011	2.3	0.0	6.70	14.00	0.00	65.63	43.28	16.42	5.67
NA03/Jan/2011	1.3	0.0	7.58	33.00	0.00	76.22	47.49	17.15	11.35
NA04/Jan/2011	1.8	0.0	11.07	67.00	0.00	88.27	73.17	9.03	5.87
NA05/Jan/2011	2.7	0.0	5.87	8.00	0.00	54.03	32.37	17.04	4.26
RV01/Jan/2011	4.0	0.1	6.82	8.00	3.44	41.39	26.39	13.20	1.61
RV02/Jan/2011	2.9	0.0	8.35	12.00	0.00	65.24	47.90	15.57	1.56
RV03/Jan/2011	1.9	0.0	8.26	11.00	0.00	76.95	61.74	10.90	4.00
RV04/Jan/2011	2.6	0.0	6.49	10.00	0.00	59.96	40.06	16.95	2.62
RV05/Jan/2011	2.8	0.0	9.30	14.00	0.00	69.85	50.54	13.98	5.05
NA01/Jul/2011	2.6	0.1	6.52	23.00	2.50	60.15	33.74	10.74	15.34
NA02/Jul/2011	2.5	0.4	4.46	14.00	17.17	43.86	29.15	6.73	7.40
NA03/Jul/2011	2.0	0.0	7.46	18.00	0.00	73.21	45.58	16.09	11.26
NA04/Jul/2011	1.7	0.0	9.62	25.00	0.00	82.30	49.90	19.75	12.47
NA05/Jul/2011	2.0	0.0	10.33	28.00	0.00	80.60	46.47	19.36	14.52
RV01/Jul/2011	2.7	0.0	6.34	12.00	0.00	57.39	42.59	12.62	2.05
RV02/Jul/2011	2.7	0.0	7.11	14.00	0.00	62.07	47.82	12.66	1.41
RV03/Jul/2011	1.7	0.0	7.72	12.00	0.00	78.00	60.88	10.36	6.48
RV04/Jul/2011	2.2	0.0	5.55	13.00	0.00	60.41	50.45	7.21	2.52
RV05/Jul/2011	2.2	0.0	5.45	18.00	0.00	59.61	45.87	7.34	6.24

NA: Nova América; RV: Rio Verde

**Table 3:** Levels of mineral nutrients and fertility parameters of soil from each collection site.

and PAL activity was increased in lower temperatures [31]. In other study with tomato plants (*Lycopersicon esculentum* L.), the thermal stress caused highest phenylalanine ammonia-lyase activity, and this results are in agreement with the trend found in our paper [32]. To other hand, this sensibility to climatic changes was also observed in phenolic compounds present in grape skins, in which warm temperatures presented positive correlation with the levels of phenolic compounds [33]. Also, related to PAL, the micronutrient Cu is linked to production of phenolic compounds in plants, because it is capable to activate the PAL pathway, and this may explain the

positive correlation between Cu present in soil with tannins and flavonoids observed in Table 6. Another explanation suggested of the increased levels of phenolic compounds in these tissues, is that this is associated with a mechanism of tolerance to Cu, since Cu is a catalyst for redox reactions that can generate free radicals harmful to the plant; consequently, increased levels of phenolic compounds may have two goals: to decrease the concentration of free Cu in plant tissue by the reaction of this with phenols, and to minimize the deleterious effects of free radicals formed, through the antioxidant reactions of the phenolic compounds [34].

Sample	N	P	K	Ca	Mg	S	Cu	Fe	Mn	Zn
NA01/Jan/2011	12.00	1.00	10.00	5.00	1.70	1.00	6.00	310.00	34.00	20.00
NA02/Jan/2011	12.20	0.90	8.00	5.20	1.60	1.30	5.00	286.00	25.00	23.00
NA03/Jan/2011	12.00	1.20	10.60	4.90	1.50	1.00	5.00	276.00	24.00	22.00
NA04/Jan/2011	12.80	1.30	9.80	5.40	1.70	1.20	4.00	240.00	20.00	21.00
NA05/Jan/2011	12.00	1.20	8.40	4.70	2.20	1.10	7.00	243.00	18.00	19.00
RV01/Jan/2011	13.60	1.00	8.00	5.20	1.60	1.00	8.00	370.00	25.00	20.00
RV02/Jan/2011	12.50	1.00	8.00	5.50	1.60	1.10	5.00	305.00	22.00	21.00
RV03/Jan/2011	13.20	1.10	9.20	6.00	1.40	1.10	6.00	228.00	47.00	16.00
RV04/Jan/2011	14.00	1.40	9.60	6.20	1.60	1.20	6.00	202.00	61.00	16.00
RV05/Jan/2011	12.60	1.00	8.80	5.80	1.80	1.10	5.00	294.00	29.00	18.00
NA01/Jul/2011	14.00	1.00	7.60	5.20	1.70	1.20	4.00	241.00	29.00	11.00
NA02/Jul/2011	13.00	1.10	6.80	4.20	1.80	1.40	2.00	154.00	20.00	10.00
NA03/Jul/2011	12.60	1.00	8.00	4.40	1.60	1.60	3.00	367.00	19.00	11.00
NA04/Jul/2011	13.40	1.10	8.80	6.20	1.50	1.40	3.00	141.00	22.00	14.00
NA05/Jul/2011	12.80	1.20	8.60	6.50	1.60	1.50	3.00	148.00	24.00	14.00
RV01/Jul/2011	14.20	1.00	4.80	5.00	2.50	1.60	4.00	270.00	28.00	13.00
RV02/Jul/2011	14.40	1.10	6.40	6.00	1.80	1.80	4.00	363.00	22.00	14.00
RV03/Jul/2011	13.00	1.20	8.60	5.20	1.70	1.90	4.00	367.00	45.00	11.00
RV04/Jul/2011	13.20	1.20	8.00	5.40	1.60	1.60	6.00	345.00	58.00	11.00
RV05/Jul/2011	15.00	1.40	8.60	5.10	1.80	1.80	2.00	311.00	53.00	13.00

NA: Nova América; RV: Rio Verde

**Table 4:** Levels of macronutrients (N, P, K, Ca, Mg, S in g/kg) and micronutrients (Cu, Fe, Mn, Zn in mg/kg) in the leaves of *Syzygium jambos* from each collection site in January 2011 to April 2011.

Sample	TP	PP	Fv
NA01/Jan/2011	21.151 ± 0.003	9.985 ± 0.010	2.151 ± 0.012
NA02/Jan/2011	21.134 ± 0.002	10.133 ± 0.011	1.914 ± 0.006
NA03/Jan/2011	19.766 ± 0.004	9.068 ± 0.008	1.910 ± 0.029
NA04/Jan/2011	20.750 ± 0.001	8.421 ± 0.008	2.006 ± 0.013
NA05/Jan/2011	23.784 ± 0.003	9.675 ± 0.015	2.218 ± 0.018
RV01/Jan/2011	20.143 ± 0.003	9.897 ± 0.005	2.364 ± 0.014
RV02/Jan/2011	18.614 ± 0.002	9.818 ± 0.013	2.153 ± 0.003
RV03/Jan/2011	20.582 ± 0.002	9.524 ± 0.005	2.272 ± 0.005
RV04/Jan/2011	18.147 ± 0.002	9.675 ± 0.008	2.165 ± 0.008
RV05/Jan/2011	19.453 ± 0.005	9.259 ± 0.010	2.216 ± 0.004
NA01/Jul/2011	21.748 ± 0.003	11.647 ± 0.008	2.265 ± 0.043
NA02/Jul/2011	23.047 ± 0.005	9.535 ± 0.006	1.815 ± 0.005
NA03/Jul/2011	20.397 ± 0.003	10.269 ± 0.005	2.061 ± 0.007
NA04/Jul/2011	22.912 ± 0.003	10.147 ± 0.010	2.156 ± 0.008
NA05/Jul/2011	21.629 ± 0.003	11.111 ± 0.022	2.448 ± 0.006
RV01/Jul/2011	18.860 ± 0.002	10.239 ± 0.012	2.372 ± 0.726
RV02/Jul/2011	19.949 ± 0.003	10.721 ± 0.024	2.480 ± 0.005
RV03/Jul/2011	21.591 ± 0.004	10.109 ± 0.011	2.169 ± 0.003
RV04/Jul/2011	20.658 ± 0.002	8.341 ± 0.013	2.200 ± 0.040
RV05/Jul/2011	20.329 ± 0.005	9.780 ± 0.013	2.134 ± 0.012

NA: Nova América; RV: Rio Verde; TP: total phenols content; PP: tannins by protein precipitation assay; Fv: total flavonoids

**Table 5:** Amounts of phenolic compounds in g/100 g dry weight (± standard deviation) of leaves of *Syzygium jambos*.

The nutrient Fe<sub>s</sub> showed positive correlation with TP and PP, and according Jin et al. [35] phenolic compounds may complex with Fe<sup>3+</sup> and be transported to other tissues, facilitating its mobilization between different tissues, and also participating in reduction reactions of Fe<sup>3+</sup> to Fe<sup>2+</sup>, aiding reductase-type enzymes.

The Hierarchical Cluster Analysis employing Ward's variance minimizing method showed a highly variability within phenolic compounds of *S. jambos* leaves. From Figure 1 it can be seen the similarities of the samples on the basis of the distribution of the constituents and this may indicate that the main factor responsible in chemical variability is the collection time, due the similarities of

samples of a same site and the collection site would have less influence in phenols variability between the two different localities.

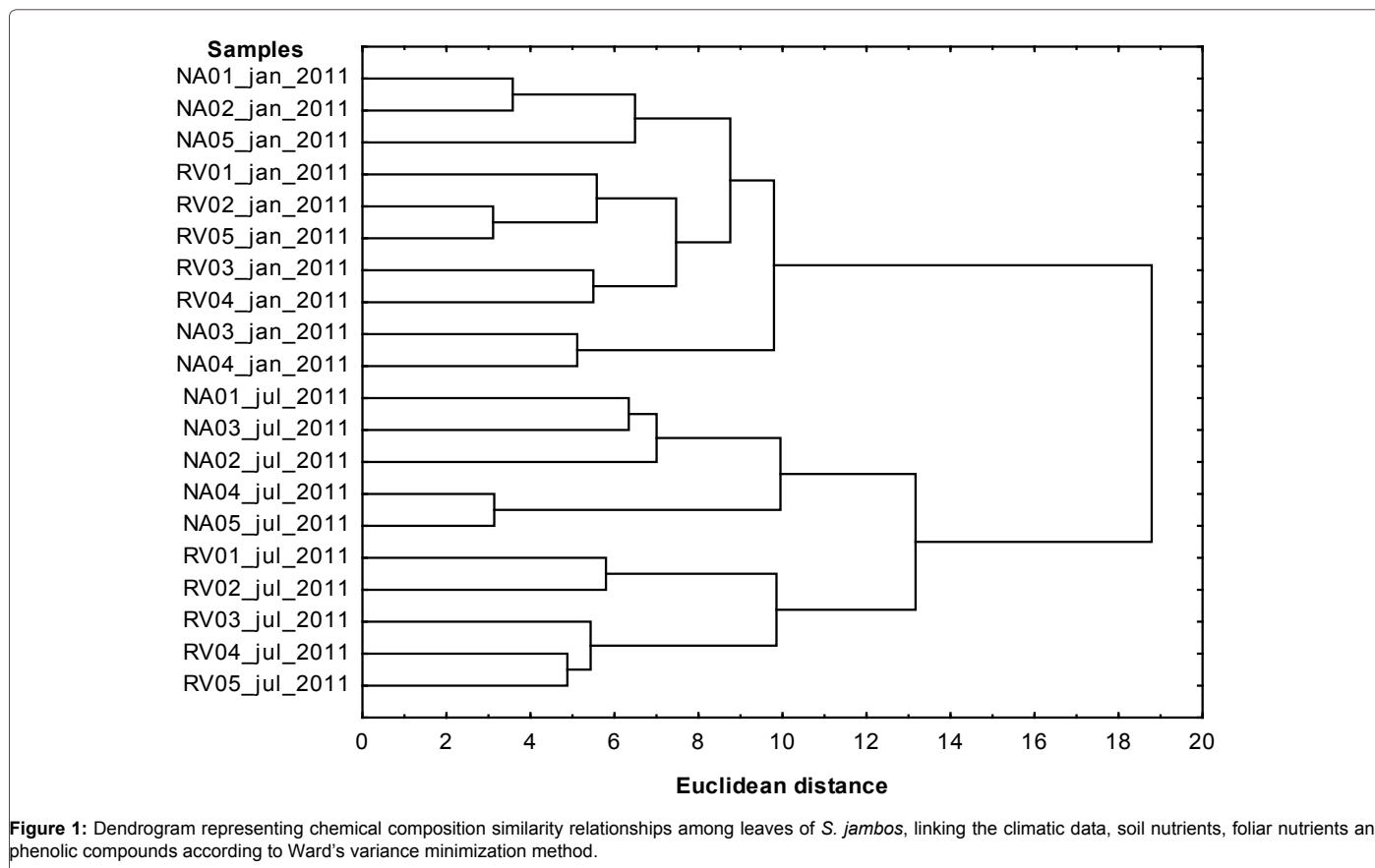
## Conclusion

This paper suggests that there is a relevant influence of environmental factors over production of phenolic compounds in the leaves of *S. jambos*, with foliar nutrients (P, K, Ca, Na, Fe, Co and Mo), soil nutrients (Al, K, S, Na and Mn) and climatic factors (temperature and rainfall), being the main variables that may change the levels of phenolic compounds in this plant tissue. From the data obtained, the best conditions of collection can be established for leaves of *S. jambos*.

	TP	PP	Fv
Cas	-0.10705	-0.27518	0.005473
Ms	-0.02181	0.23104	0.19327
Als	0.37711	0.036006	-0.3875**
HAl	-0.23139***	0.17572	0.40273**
Ks	0.40544**	0.37155***	-0.03278
Ss	-0.38337**	0.14683	0.37144***
Nas	0.33869***	0.042196	-0.21794
Zns	-0.09854	-0.26323	0.10575
Bs	0.020883	-0.25372	0.00098
Cus	-0.19116	0.49054*	0.36616***
Fes	0.58551*	0.42248**	-0.34742***
Mns	0.50044*	0.39947**	-0.17427
NI	-0.27365	0.2824	0.43661**
PI	-0.03023	-0.35143***	-0.06747
KI	0.02338	-0.38467**	-0.34668***
Cal	-0.25612	0.15188	0.55497*
Mgl	0.036881	0.10184	0.23637
SI	0.057513	0.2213	0.19748
Nal	0.17358	0.18636	0.40286**
Cul	-0.19142	-0.2768	0.23941
Fel	-0.38217**	-0.10146	0.16464
Mni	-0.32657	-0.25279	0.099418
Znl	-0.22435	-0.30987	-0.1938
Col	0.2682	0.40508**	0.22787
Mol	0.24594	0.43497**	0.24723
Temperature	-0.17664	-0.41778**	-0.27652
Rainfall	-0.1406	-0.42803**	-0.30053

\*Significant at: \*1%, \*\*5% and \*\*\*15%. TP: total phenols content; PP: tannins by protein precipitation assay; Fv: total flavonoids

**Table 6:** Values of Pearson's coefficient between environmental variables and phenolic compounds found in leaves of *Syzygium jambos*.



**Figure 1:** Dendrogram representing chemical composition similarity relationships among leaves of *S. jambos*, linking the climatic data, soil nutrients, foliar nutrients and phenolic compounds according to Ward's variance minimization method.

## References

- Iwu M (1993) Handbook of African Medicinal Plants. CRC Press, Florida, USA.
- Slowing K, Söllhuber M, Carretero E, Villar A (1994) Flavonoid glycosides from *Eugenia jambos*. Phytochemistry 37: 255-258.
- Slowing K, Carretero E, Villar A (1994) Anti-inflammatory activity of leaf extracts of *Eugenia jambos* in rats. J Ethnopharmacol 43: 9-11.
- Slowing K, Carretero E, Villar A (1996) Anti-inflammatory compounds of *Eugenia jambos*. PTR 10: 8126-8127.
- Kouki M, Manetas Y (2002) Resource availability affects differentially the levels of gallotannins and condensed tannins in *Ceratonia siliqua*. Biochem Syst Ecol 30: 631-639.
- Monteiro JM, Albuquerque UP, Neto EMFL, Araújo EL, Albuquerque MM, et al. (2006) The effects of seasonal climate changes in the Caatinga on tannin level. Rev Bras Farmacogn 16: 338-344.
- Avila-Peña D, Peña N, Quintero L, Suárez-Roca H (2007) Antinociceptive activity of *Syzygium jambos* leaves extract on rats. J Ethnopharmacol 112: 380-385.
- Hatano T, Kira R, Yoshizaki M, Okuda T (1986) Seasonal changes in the tannins of *Liquidambar formosana* reflecting their biogenesis. Phytochemistry 25: 2787-2789.
- Salminen JP, Ossipov V, Haukioja E, Pihlaja K (2001) Seasonal variation in the content of hydrolysable tannins in leaves of *Betula pubescens*. Phytochemistry 57: 15-22.
- Sampaio BL, Bara MT, Ferri PH, Santos SC, Paula JR (2011) Influence of environmental factors on the concentration of phenolic compounds in leaves of *Lafoesia pacari*. Rev Bras Farmacogn 21: 1127-1137.
- Sá FAS, Borges LL, Paula JAM, Sampaio BL, Ferri PH, et al. (2012) Essential oils in aerial parts of *Myrcia tomentosa*: composition and variability. Rev Bras Farmacogn 22: 1233-1240.
- Borges LL, Alves SF, Sampaio BL, Conceição EC, Bara MTF, et al. (2013) Environmental factors affecting the concentration of phenolic compounds in *Myrcia tomentosa* leaves. Rev Bras Farmacogn 23: 230-238.
- Borges LL, Alves SF, Carneiro FM, Conceição EC, Bara MTF, et al. (2012) Influence of environmental factors on the concentration of phenolic compounds in barks of *Myrcia tomentosa* (Aubl.) DC. J Pharm Res 5: 1323-1327.
- Alcantara GA, Borges LL, Paula JR (2012) Seasonal variation in the content of phenolic compounds in barks of *Myrcia rostrata* DC. by influence of environmental factors. J Pharm Res 5: 1306-1309.
- Borges LL, Alves SF, Bara MTF, Conceição EC, Ferri PH, et al. (2013) Influence of environmental factors on the composition of essential oils from leaves of *Myrcia tomentosa* (Aubl.) DC. BLACPMA 12: 572-580.
- Rezende WP, Borges LL, Alves NM, Ferri PH, Paula JR (2013) Chemical variability in the essential oils from leaves of *Syzygium jambos*. Rev Bras Farmacogn 23: 433-440.
- Hagerman AE, Butler LG (1978) Protein precipitation method for the quantitative determination of tannins. J Agr Food Chem 26: 809-812.
- Waterman PG, Mole S (1987) A critical analysis of techniques for measuring tannins in ecological studies I: Techniques for chemically defining tannins. Oecologia 72: 137-147.
- Waterman PG, Mole S (1987) A critical analysis of techniques for measuring tannins in ecological studies II: Techniques for biochemically defining tannins. Oecologia 72: 148-156.
- Rolim A, Maciel CPM, Kaneko TM, Consiglieri VO, Salgado-Santos IMN, et al. (2005) Validation assay for total flavonoids, as rutin equivalents, from *Trichilia catigua* Adr. Juss (Meliaceae) and *Ptychopetalum olacoides* Benthham (Olacaceae) Commercial Extract. J AOAC Int 88: 1015-1019.
- Brazil (2011) Instituto Nacional de Pesquisas Espaciais.
- Silva SC (2009) Manual de análises químicas de solos, plantas e fertilizantes. Embrapa Informação Tecnológica.
- Draper NR, Smith H (1981) Applied regression analysis. (2nd edn) New York: John Wiley.
- Ward JH (1963) Hierarchical grouping to optimize an objective function. J Am Stat Assoc 58: 236-244.
- Piaw CY (2005) Asas statistik penyediaan. McGraw-Hill, Kuala Lumpur, Malaysia.
- Yamada T (2004) Resistência de plantas às pragas e doenças: pode ser afetada pelo manejo da cultura? Inf Agronom 108: 1-7.
- Bowerman BL, O'Connell RT, Koehler AB (2005) Forecasting, time series and regression. Brooks/Cole Thomson Learning Inc, USA.
- Ghani IMM, Ahmad S (2010) Stepwise Multiple Regression Method to Forecast Fish Landing. Procedia Soc Behav Sci 8: 549-554.
- Padda MS, Picha DH (2008) Effect of low temperature storage on phenolic composition and antioxidant activity of sweet potatoes. Postharvest Biol Tec 47: 176-180.
- Albert A, Sareedechai V, Heller W, Seidlitz HK, Zidorn C (2009) Temperature is the key to altitudinal variation of phenolics in *Arnica montana* L. cv. ARBO. Oecologia 160: 1-8.
- Nguyen TBT, Ketsa S, Doorn WG (2003) Relationship between browning and the activities of polyphenol oxidase and phenylalanine ammonia lyase in banana peel during low temperature storage. Postharvest Biol Tec 30: 187-193.
- Rivero RM, Ruiz JM, García PC, López-Lefebvre LR, Sánchez E, et al. (2001) Resistance to cold and heat stress: accumulation of phenolic compounds in tomato and watermelon plants. Plant Sci 160: 315-321.
- Nicholas KA, Matthews MA, Lobell DB, Willits NH, Field CB (2011) Effect of vineyard-scale climate variability on *Pinot noir* phenolic composition. Agric For Meteorol 151: 1556-1567.
- Kováčik J, Klejduš B (2008) Dynamics of phenolic acids and lignin accumulation in metal-treated *Matricaria chamomilla* roots. Plant Cell Rep 27: 605-615.
- Jin CW, You GY, He YF, Tang C, Wu P, et al. (2007) Iron deficiency-induced secretion of phenolics facilitates the reutilization of root apoplastic iron in red clover. Plant Physiol 144: 278-285.

**Citation:** Rezende WP, Borges LL, Santos DL, Alves NM, Paula JR (2015) Effect of Environmental Factors on Phenolic Compounds in Leaves of *Syzygium jambos* (L.) Alston (Myrtaceae). Mod Chem appl 3: 157. doi:[10.4172/2329-6798.1000157](https://doi.org/10.4172/2329-6798.1000157)

## Submit your next manuscript and get advantages of OMICS Group submissions

### Unique features:

- User friendly/feasible website-translation of your paper to 50 world's leading languages
- Audio Version of published paper
- Digital articles to share and explore

### Special features:

- 400 Open Access Journals
- 30,000 editorial team
- 21 days rapid review process
- Quality and quick editorial, review and publication processing
- Indexing at PubMed (partial), Scopus, DOAJ, EBSCO, Index Copernicus and Google Scholar etc
- Sharing Option: Social Networking Enabled
- Authors, Reviewers and Editors rewarded with online Scientific Credits
- Better discount for your subsequent articles

Submit your manuscript at: <http://www.omicsonline.org/submission/>