

Effects of Cognitive Rehabilitation Training on Schizophrenia: 2 Years of Follow-Up

Jianqing Tao, Qiang Zeng, Jia Liang*, Aihua Zhou and Xuebing Yin and Ai Xu

Department of psychiatry, the People's Hospital of Guangxi Zhuang Autonomous Region; Yongwu Road, Nanning, Guangxi, China

Abstract

Background: Schizophrenia is a mental disorder and characterized by abnormal social behavior and failure to recognize what is real. The current study was to explore the long-term effects of cognitive rehabilitation training on schizophrenia.

Methods: Eighty six cases of hospitalized patients with schizophrenia were randomly divided into study group and control group. The relapse and employment (attending school) rates were used as indicators to assess the treatment effect. All patients were followed up by 2 years. Kaplan-Meier survival analysis was conducted with relapse and employment (attending school) rates.

Results: The rates of relapse in the study group and the control group were 18% and 41%, and relapse free survival time was 22.22 months and 18.55 months; the rates of employment (attending school) were 64% and 43%, and not employment (attending school) time were 10.68 months and 15.74 months, respectively. There was significant difference between the two groups ($P < 0.05$).

Conclusion: We found that the cognitive rehabilitation training could significantly reduce schizophrenic relapse rate, prolong the time of patients without relapse, improve the employment (attending school) rate, and shorten the discharged time, which is a powerful treatment method to improve social competence in schizophrenia patients.

Keywords: Cognitive rehabilitation training; Kaplan-Meier survival analysis; Long-term follow-up; Schizophrenia; Pharmacotherapy treatment; Psychosocial function

Introduction

Schizophrenia is a mental disorder, which affects approximately 0.4%–1% of the population worldwide [1,2]. For many patients, schizophrenia is a lifelong disease and those with schizophrenia take themselves as having minimal competence, social value or self-efficacy [3,4]. Generally, schizophrenia is characterized by abnormal social behavior and cognitive impairment [5], including those in psychomotor speed, attention, memory, and executive functions, which are thought to underlie the severe functional disability associated with this illness [6-8]. Environmental and genetic factors are known to influence the risk of suffering from schizophrenia, however, the mechanistic basis for these gene-environment interactions remains unrevealed.

Current drug treatments of schizophrenia mainly rely on antagonism of D2 dopamine receptor by incorporating a spectrum of actions at other G-protein coupled receptors. Despite the advanced development in the pharmacotherapy for the illness, a substantial proportion of patients continue to be plagued by impairments in social and occupational functioning [9]. And 30% of schizophrenia patients experience persistent psychotic symptoms despite two or more adequate trials of antipsychotic treatment, which is defined as “treatment-resistant schizophrenia (TRS)” [10]. Moreover, unemployment, lack of reliable friends, and leisure activities are associated with low subjective quality of life in the patients, and treatment of schizophrenia patients has remained a persistent public health challenge. For this purpose, rehabilitation programs aimed at enhancing community functioning and quality of life are currently being developed [11,12].

Although the topic of cognitive remediation in schizophrenia received little attention until 2000s, it has been firmly established. The field developed as a result of the need to address that severe psychosocial impairments must contend with despite the widespread

use of psychopharmacologic treatments [13]. Rehabilitative training such as social and vocational skills involve targeted interventions that aim to inspire participants to acquire important life skills, thereby reducing existing impairments in social and role functioning [13,14]. However, most previous studies focused on a particular dimension of psychosocial functioning or a very restricted number of cognitive measures. Few studies have reported the long-term outcome and ending impact of schizophrenia patients in life after cognitive rehabilitation training. In the current study, we aimed to explore whether the subjects receiving cognitive rehabilitation training would live a normal life over a two years follow-up period based on the relapse and employment (attending school) rates. We expected that our study would help to assess the long-term effect of cognitive rehabilitation training on the life quality of patients with schizophrenia.

Patients and Methods

Patients

86 schizophrenia patients were enrolled in the current study since April 2007 to October 2011 in the People's Hospital of Guangxi Zhuang Autonomous Region. Patients included should meet the criteria for schizophrenia according to CCMD-3 (Psychiatric branch of Chinese medical association) [15], 18 to 44 years old, with education background

*Corresponding author: Jia Liang, Department of psychiatry, the People's Hospital of Guangxi Zhuang Autonomous Region, Yongwu Road, Nanning, Guangxi, China, 530021, Tel: +86-18607713688; E-mail: taojianqing2014@163.com

Received May 05, 2015; Accepted May 30, 2015; Published June 06, 2015

Citation: Tao J, Zeng Q, Liang J, Zhou A, Yin X, et al. (2015) Effects of Cognitive Rehabilitation Training on Schizophrenia: 2 Years of Follow-Up. J Psychiatry S1: 006 doi: [10.4172/2378-5756.S1-006](http://dx.doi.org/10.4172/2378-5756.S1-006)

Copyright: © 2015 Tao J, et al. This is an open-access article distributed under the terms of the Creative Commons Attribution License, which permits unrestricted use, distribution, and reproduction in any medium, provided the original author and source are credited

superior than middle school, and with disease course shorter than ten years (Table 1). Cases who received second generation antipsychotics and nootropic, had dementia, severe body disease and no cognitive disorder, were excluded from the study. The project was approved by the People's Hospital of Guangxi Zhuang Autonomous Region. The ethics committee approved the relating screening, inspection, and data collection of the patients, and all subjects signed a written informed consent form. All works were undertaken following the provisions of the Declaration of Helsinki.

Grouping and treatment

Patients were randomly divided into two groups: control group (Group A, including 42) patients and cognitive rehabilitation training group (Group B, including 44 patients). There was no significant difference between the two groups in sex composition ($P=0.679$), ages ($P=0.611$), education background ($P=0.690$), domicile ($P=0.506$), and psychopharmacologic treatments ($P=0.820$) (Table 1). The severity of schizophrenia of all patients were evaluated based on Positive and Negative Syndrome Scale (PANSS), Digit Span Test (DS), Verbal Fluency Test (VF), and Wisconsin Card Sorting Test (WCST). For WCST, numbers of response administered (Ra), categories completed (Cc), response corrected (Rc), response preservative errors (Rpe) were recorded.

For patients in Group A, only psychopharmacologic treatment was conducted: patients were treated with one type of the following first generation antipsychotics (FGA) based on their conditions and drug tolerance, including perphenazine, chlorpromazine, sulpiride, and hioridazine. For patients in Group B, an integrated therapy combined with psychopharmacologic treatment and cognitive rehabilitation training was set up. Detail items of the cognitive rehabilitation training were shown in Table 2. Data of patients who came up with severe side effects or turned to another type of antipsychotics was excluded from further analysis. Both groups were subjected to the treatment for three months and those who met the "healing" criteria (Table 3) [16] were followed up.

Evaluation of the treatment effect

The treatment effects of the two therapies were evaluated based on the difference of the tests mentioned above between the baseline and after the treatments. PANSS values were recorded every three months after the treatments. Moreover, relapse or employment (attending school) was taken as end events. Criteria of clinical outcomes of patients were shown in Table 3 [16,17].

Item		Group A	Group B
Gender	Male	22	25
	Female	20	19
Age		29.71 ± 6.36	28.95 ± 7.38
Education background	Junior high school	24	27
	Above senior high school	18	17
Domicile	Countryside	34	33
	Town	8	11
Psychopharmacologic treatments	Sulpiride	23	27
	Perphenazine	8	9
	Chlorpromazine	6	5
	Thioridazine	5	3

Table 1: Demographic information of the cases enrolled in the present study.

	Item
Training of memory and attention	1. Training of visual memory; 2. Training of digital memory; 3. Training of verbal memory; 4. Training of memory, including walking a maze, jigsaw, etc
Training of language expression and logic	1. Information and language stimulation; 2. Graphic sequence reasoning, digital sequence reasoning, symbol reasoning, etc.
Training of execution	Setting a task for patients to describe how to complete
Training of coordination	Patients were asked to finish daily life all by themselves, and participate in the manual operation, collective activity, and competitive games
Training of cognitive rehabilitation	30 min each time, two times each week, 12 weeks each treatment. The training began with visual then to abstract

Table 2: Detail items of the cognitive rehabilitation training.

Clinical outcome	Criteria
Healing	PANSS value reduced by more than 70% after the treatment
Relapse	PANSS value increased by more than 25% during the follow-up; significant suicide or hurting people tendency lasted for more than one week
Employment or attending school	Being employed or attending school for more than one month

Table 3: Assessing criteria of clinical outcomes.

Statistical Analysis

All the data were expressed in the form of mean ± SD. T-test and Chi-square test were conducted. The Kaplan-Meier method was used to estimate survival curve, and survival differences were analyzed by the log-rank test. All the statistical analysis were conducted using SPSS version 16.0 (IBM, Armonk, NY, USA).

Results

Cognitive rehabilitation training significantly improved the performance in different tests

There was no significant difference in PANSS, DS, VF, and WCST performance between Group A and Group B before the treatment (Table 4). After three months being subjected to the two therapies, conditions of all the patients were improved, especial for patients receiving integrated therapy. However, patients in Group B showed significant improvement in all the tests ($P<0.05$) while those in Group A showed little improvement in DS, VF, and WCST test (Table 4).

Cognitive rehabilitation training significantly improved the relapse rate, and employment (attending school) rate of schizophrenia patients

Relapse data of two patients in Group A and six patients in Group B was lost to follow up. 17 cases in Group A relapsed during the two years follow-up while only eight cases in Group B showed symptom of schizophrenia again. The relapse rates were 41% and 18% for Group A and Group B, respectively ($P=0.022$) (Figure 1). The survival without relapse times for Group A and Group B were 18.6 months and 22.2 months, respectively and the median was 24 months for both groups. Data of employment (attending school) rate of two cases were lost in Group A and three cases in Group B. 18 cases in Group A returned to work or school compared with 28 cases in Group B. The average times

		Group A	Group B
PANSS	Baseline	94.40 ± 13.55	92.14 ± 12.81
	12 weeks treatment	61.45 ± 8.95	60.75 ± 11.79
DS	Baseline	4.36 ± 1.34	4.55 ± 1.07
	12 weeks treatment	4.55 ± 1.63	6.64 ± 1.46
VF	Baseline	3.69 ± 1.85	3.70 ± 1.39
	12 weeks treatment	3.74 ± 1.64	4.68 ± 1.54
Ra	Baseline	114.86 ± 15.39	113.82 ± 13.75
	12 weeks treatment	112.81 ± 14.14	105.59 ± 13.77
Cc	Baseline	2.64 ± 1.43	2.82 ± 1.57
	12 weeks treatment	2.76 ± 1.57	3.68 ± 0.64
Rc	Baseline	47.00 ± 18.17	48.59 ± 16.18
	12 weeks treatment	44.64 ± 16.33	59.66 ± 10.55
Rpe	Baseline	21.50 ± 9.30	20.18 ± 8.16
	12 weeks treatment	19.67 ± 6.71	16.05 ± 5.95

Table 4: Comparison of cognitive function between the two groups after the treatments.

of non-employment (attending school) were 15.7 months for Group A and 10.7 for Group B and medians were 24 months and 4 months, respectively. The employment (attending school) rate of Group A was 43% compared with 64% for Group B (P=0.03) (Figure 2).

Discussion

Schizophrenia is a multidimensional disorder involving a complex set of biological, psychological, and sociocultural factors that interact to undermine functioning throughout the course of the illness [18]. Despite the advanced development of drug treatments of schizophrenia, a substantial proportion of patients continue to be plagued by impairments in social and occupational functioning due to the relapse of the illness. And cognitive intervention, which are used to improve the life quality of schizophrenia patients, are gaining attention for their role in the social and occupational dysfunction that accompanies schizophrenia. The present study focused on the ending impact of schizophrenia patients participating in a rehabilitation program. Previous studies seldom focused on this part of cognitive rehabilitation training. Our results revealed that after the cognitive rehabilitation training, patients in Group B showed significant improvement in PANSS, DS, VF, and WCST tests while patients in Group A just got improved in PANSS test (Table 3). The data was indicative of the treatment effect of cognitive rehabilitation training on attention, memory, and language fluency in schizophrenia patients. Moreover, in WCST test, the number of Rc increased dramatically, which showed the improvement of error correcting capability in schizophrenia patients; and the numbers of Ra and Cc were significantly different between the two groups after the treatment and between before and after training in Group B, these indicators represented the improvement of psychomotor in schizophrenia patients (Table 3). Cognitive functions play different roles in psychosocial functioning improvement [19], and training of cognitive function would make important impact on human organs through environmental factors [20-22]. Bell et al. [23] found that the cognitive rehabilitation training could improve the social competence of schizophrenia patients by increasing the employment (attending school) rate. Similar pattern was also observed in the present study: patients with cognitive rehabilitation training had a dramatically higher employment (attending school) rate and lower relapse rate than those in control group (Figures 1 and 2). Moreover, the relapse free survival time of patients in Group B was also longer during the training program. The visual memory and sustained attention enhancement during the program could reinforce improvement in the community

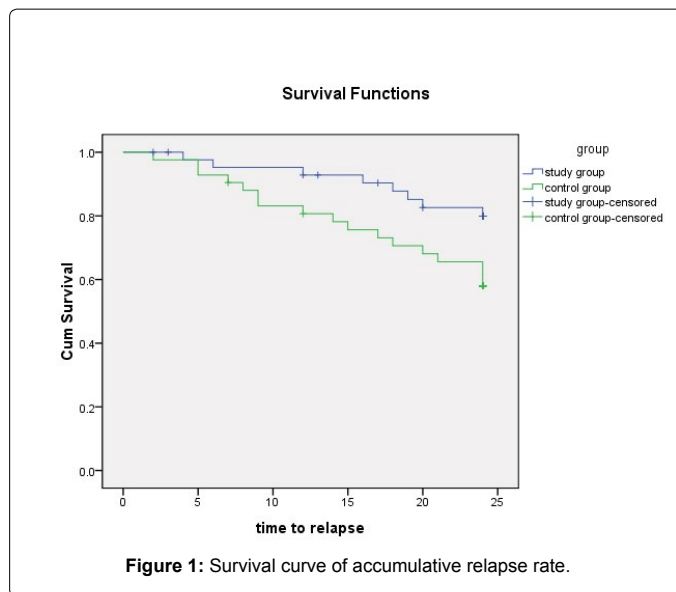


Figure 1: Survival curve of accumulative relapse rate.

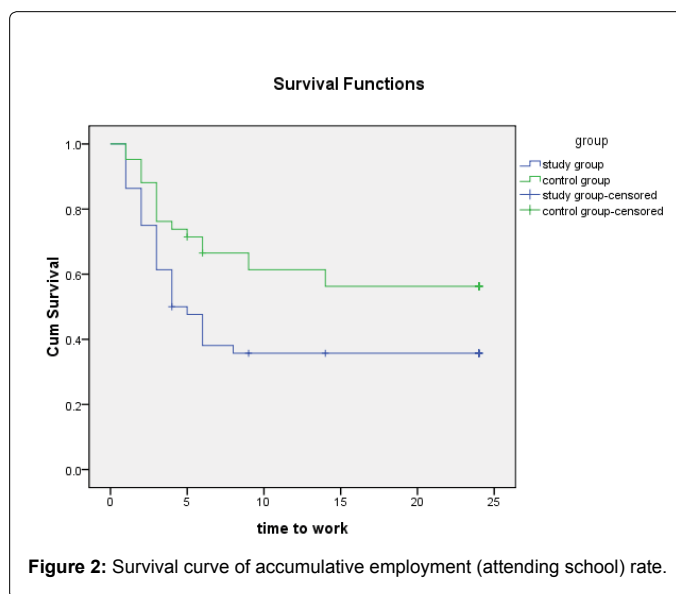


Figure 2: Survival curve of accumulative employment (attending school) rate.

functioning dimensions, which was more effective even than career training. McGurk and Mueser [24] indicated that dramatic superiority of cognitive rehabilitation training over career training would be noticed after three to four years.

In conclusion, it was found that the cognitive rehabilitation training could significantly reduce schizophrenic relapse rate, prolong the time of patients without relapse, and improve the employment (attending school) rate. The results showed the powerful potential of cognitive rehabilitation training on the improvement of social competence in schizophrenia patients. While the results of the current study are promising, our findings may not generalize to other ethnic groups. And the study needs to be replicated with larger samples over a longer period.

Conflict of Interest

The authors disclosed no conflict of interest in this paper.

Acknowledgement

This study was supported by the Medical and Health Research Program of Health and Family Planning Commission of Guangxi Zhuang Autonomous Region (No. Z2007162 and Z2014631) and Scientific Research and Technology Development Program of Qingxiu District, Nanning, Guangxi (No. 2012S03).

References

1. Zhang XY, Ai Jurdi RK, Zoghbi AW, Chen da C, Xiu MH, et al. (2013) Prevalence, demographic and clinical correlates of suicide attempts in Chinese medicated chronic inpatients with schizophrenia. *J Psychiatr Res* 47: 1370-1375.
2. Skokou M, Gourzis P (2014) Demographic features and premorbid personality disorder traits in relation to age of onset and sex in paranoid schizophrenia. *Psychiatry Res* 215: 554-559.
3. Beck EM, Cavelti M, Wirtz M, Kossowsky J, Vauth R (2011) How do socio-demographic and clinical factors interact with adherence attitude profiles in schizophrenia? A cluster-analytical approach. *Psychiatry Res* 187: 55-61.
4. Gaudiano BA, Miller IW, Herbert JD (2007) The treatment of psychotic major depression: is there a role for adjunctive psychotherapy? *Psychother Psychosom* 76: 271-277.
5. Rosti-Otajarvi E, Mantynen A, Koivisto K, Huhtala H, Hamalainen P (2013) Neuropsychological rehabilitation has beneficial effects on perceived cognitive deficits in multiple sclerosis during nine-month follow-up. *J Neurol Sci* 334: 154-160.
6. Green MF, Kern RS, Braff DL, Mintz J (2000) Neurocognitive deficits and functional outcome in schizophrenia: are we measuring the "right stuff"? *Schizophr Bull* 26: 119-136.
7. Fervaha G, Foussias G, Agid O, Remington G (2014) Motivational and neurocognitive deficits are central to the prediction of longitudinal functional outcome in schizophrenia. *Acta Psychiatr Scand* 130: 290-299.
8. Cervellione KL, Burdick KE, Cottone JG, Rhinewine JP, Kumra S (2007) Neurocognitive deficits in adolescents with schizophrenia: longitudinal stability and predictive utility for short-term functional outcome. *J Am Acad Child Adolesc Psychiatry* 46: 867-878.
9. Miyamoto S, Miyake N, Jarskog LF, Fleischhacker WW, Lieberman JA (2012) Pharmacological treatment of schizophrenia: a critical review of the pharmacology and clinical effects of current and future therapeutic agents. *Mol Psychiatry* 17: 1206-1227.
10. Lieberman JA (1999) Pathophysiological mechanisms in the pathogenesis and clinical course of schizophrenia. *J Clin Psychiatry* 60 Suppl 12: 9-12.
11. Cordier R, Newton Scanlan J (2012) Cognitive remediation has global cognitive and functional benefits for people with schizophrenia when combined with psychiatric rehabilitation. *Aust Occup Ther J* 59: 334-335.
12. Wexler BE, Bell MD (2005) Cognitive remediation and vocational rehabilitation for schizophrenia. *Schizophr Bull* 31: 931-941.
13. Bartels SJ, Pratt SI (2009) Psychosocial rehabilitation and quality of life for older adults with serious mental illness: recent findings and future research directions. *Curr Opin Psychiatry* 22: 381-385.
14. Kern RS, Glynn SM, Horan WP, Marder SR (2009) Psychosocial treatments to promote functional recovery in schizophrenia. *Schizophr Bull* 35: 347-361.
15. Gan JL, Duan HF, Yang JM, Shi ZJ, Zhang DW, et al. (2011) [Proton magnetic resonance spectroscopy of prefrontal lobe and thalamus in schizophrenics: correlation with clinical characteristics]. *Zhonghua Yi Xue Za Zhi* 91: 3034-3039.
16. Zhou H Z WZ (2012) Clinical efficacy of paliperidone in treatment of first episode schizophrenia. *The Journal of Practice Medicine* 28: 3986-3988.
17. Csernansky JG, Mahmoud R, Brenner R, Risperidone USASG (2002) A comparison of risperidone and haloperidol for the prevention of relapse in patients with schizophrenia. *N Engl J Med* 346: 16-22.
18. Bellack AS, Green MF, Cook JA, Fenton W, Harvey PD, et al. (2007) Assessment of community functioning in people with schizophrenia and other severe mental illnesses: a white paper based on an NIMH-sponsored workshop. *Schizophr Bull* 33: 805-822.
19. Poletti S, Anselmetti S, Bechi M, Ermoli E, Bosia M, et al. (2010) Computer-aided neurocognitive remediation in schizophrenia: durability of rehabilitation outcomes in a follow-up study. *Neuropsychol Rehabil* 20: 659-674.
20. Zhao WL TJQ, Yin X B (2013) Comparable study on cognition impairment in schizophrenia patients. *Frontier in Medicine* 3: 11-12.
21. Lee WK (2013) Effectiveness of computerized cognitive rehabilitation training on symptomatological, neuropsychological and work function in patients with schizophrenia. *Asia Pac Psychiatry* 5: 90-100.
22. Hogarty GE, Greenwald DP, Eack SM (2006) Durability and mechanism of effects of cognitive enhancement therapy. *Psychiatr Serv* 57: 1751-1757.
23. Bell MD, Choi KH, Dyer C, Wexler BE (2014) Benefits of cognitive remediation and supported employment for schizophrenia patients with poor community functioning. *Psychiatr Serv* 65: 469-475.
24. McGurk SR, Mueser KT (2006) Cognitive and clinical predictors of work outcomes in clients with schizophrenia receiving supported employment services: 4-year follow-up. *Adm Policy Ment Health* 33: 598-606.

Citation: Tao J, Zeng Q, Liang J, Zhou A, Yin X, et al. (2015) Effects of Cognitive Rehabilitation Training on Schizophrenia: 2 Years of Follow-Up. J Psychiatry S1: 006 doi: [10.4172/2378-5756.S1-006](https://doi.org/10.4172/2378-5756.S1-006)

Submit your next manuscript and get advantages of OMICS Group submissions

Unique features:

- User friendly/feasible website-translation of your paper to 50 world's leading languages
- Audio Version of published paper
- Digital articles to share and explore

Special features:

- 400 Open Access Journals
- 30,000 editorial team
- 21 days rapid review process
- Quality and quick editorial, review and publication processing
- Indexing at PubMed (partial), Scopus, EBSCO, Index Copernicus and Google Scholar etc
- Sharing Option: Social Networking Enabled
- Authors, Reviewers and Editors rewarded with online Scientific Credits
- Better discount for your subsequent articles

Submit your manuscript at: <http://www.editorialmanager.com/psychiatry/>