

# Evaluation of the Craniofacial Morphology of Egyptian Adults Undergoing Orthodontic Treatment

Mohamed Adel<sup>1\*</sup>, Tetsutaro Yamaguchi<sup>1</sup>, Mohamed Nadim<sup>2</sup>, Daisuke Tomita<sup>1</sup>, Yu Hikita<sup>1</sup>, Takatoshi Nakawaki<sup>1</sup>, Kosu Katayama<sup>1</sup>, Abbadi Adel El-Kadi<sup>2</sup> and Koutaro Maki<sup>1</sup>

<sup>1</sup>Department of Orthodontics, School of Dentistry, Showa University, Ohta-ku, Tokyo, Japan

<sup>2</sup>Department of Orthodontics, Suez Canal University, Egypt

## Abstract

**Background:** Craniofacial characteristics play an important role in determining the treatment plan for different types of malocclusions. The characteristics of different craniofacial morphologies vary among various populations in different parts of the world. The aim of this study was to identify cephalometric norms in an adult Egyptian population, to compare the values for Egyptian males and females and to descriptively compare the Egyptian norms with the established norms of other populations.

**Methods:** Lateral cephalometric radiographs of 300 adult Egyptians (82 males, 218 females; 18–55 years) were obtained. The radiographs were traced, and 24 hard-tissue and soft-tissue reference points were localized on the radiographs. Twenty-four angular and seven linear measurements of craniofacial morphology were analyzed with Power Cephalo software (ReazaNet Co., Ltd., Tokyo, Japan), and the results were compared according to gender and populations considered similar to the Egyptian population.

**Results:** The results showed that the Egyptians had a tendency toward the skeletal Class II with more retrognathic mandibles and more convex profiles in females ( $P = 0.03$  and  $0.016$ , respectively). In addition, females had a reduced interincisal angle ( $P = 0.016$ ) and more proclined lower incisors. For the linear dimensions, the males showed a longer anterior cranial base ( $P = 0.000$ ) as well as greater anterior facial height measurements. The tendency toward the skeletal Class II was reflected in the soft tissue measurements with reduced Z-angle values.

**Conclusion:** Egyptians have distinct craniofacial measurements that are a useful reference for cephalometric values in the diagnosis and treatment planning of orthodontic patients.

**Keywords:** Lateral cephalometry; Craniofacial morphology; Egyptian cephalometric norms; Orthodontics

## Introduction

Many studies on Ancient and modern Egyptians have concluded that Egyptians have unique common features that are very close to Mediterranean Asians and Europeans as well as Northeast Africans [1-3]. Furthermore, the populations of Europe, North Africa, the African Horn, Mediterranean Asia, and South Asia are physically and biologically considered to have a Caucasian origin [4]. Because every race has characteristic features, craniofacial measurements are considered powerful tools for the determination of the race of unidentified crania [5].

Craniofacial characteristics play an important role in determining the treatment plan for different types of malocclusions. The characteristics of different craniofacial morphologies vary among various populations in different parts of the world [6-9]. Orthodontists need baseline data on the prevalence and characteristics of various types of skeletal deformities in different geographic locations in order to determine proper orientation and treatment possibilities.

Many studies have been conducted in different populations and races to determine the cephalometric standards of different ethnic groups [6-9]. Accordingly, the standards differ among the studies. A comparative cephalometric study of class-III malocclusions of Japanese and British Caucasian adult females showed differences in the skeletal features in lateral cephalograms between the two ethnic groups [10].

Bishara et al. developed cephalometric standards for Egyptian adolescent boys and girls and compared them to a matched sample of North American adolescents. They found that the overall dentofacial morphologies of the Egyptian and Iowa boys and girls were very

similar, and there was a tendency toward dental protrusion in the Egyptian groups [11]. Hassan evaluated the cephalometric features of a Saudi population living in the western area of Saudi Arabia and revealed distinct cephalometric features in the Saudis [12]. In their studies on Anatolian Turkish adults who are considered part of the Mediterranean population, Basciftci et al. established cephalometric norms for Turkish men and women and studied the sex differences in this population. They found that the Anatolian Turkish have a long lower anterior facial height with retroclined upper incisors and proclined lower incisors [13]. The Moroccan population, which is a North African population, was examined by Ousehal et al. who established cephalometric norms based on Steiner's analysis, and their results indicated a more retruded mandible and maxilla with large skeletal sagittal discrepancies [14].

Aboul-Azm et al. established craniofacial and soft tissue standards for the Egyptian population. Twenty-two angular measurements, 13 linear measurements, and three ratios were established for the most significant skeletal, dental, and soft-tissue parameters [15]. The aim of the present study was to identify the cephalometric norms in an adult Egyptian population and compare the values of Egyptian males

**\*Corresponding author:** Mohamed Adel, Department of Orthodontics, School of Dentistry, Showa University, Ohta-ku, Tokyo, Japan, Tel: +817014858880; E-mail: [mohadel1982@gmail.com](mailto:mohadel1982@gmail.com)

Received April 22, 2016; Accepted May 16, 2016; Published May 25, 2016

**Citation:** Adel M, Yamaguchi T, Nadim M, Tomita D, Hikita Y, et al. (2016) Evaluation of the Craniofacial Morphology of Egyptian Adults Undergoing Orthodontic Treatment. Dentistry 6: 379. doi:[10.4172/2161-1122.1000379](https://doi.org/10.4172/2161-1122.1000379)

**Copyright:** © 2016 Adel M, et al. This is an open-access article distributed under the terms of the Creative Commons Attribution License, which permits unrestricted use, distribution, and reproduction in any medium, provided the original author and source are credited.

and females and descriptively compare the Egyptian norms with the established norms of other populations.

## Materials and Methods

Standardized lateral cephalometric radiographs were taken of 300 Egyptian adult males and females. The subjects were current or former patients of the Orthodontic Department of the Faculty of Dentistry of Suez Canal University. Their age range was 18–55. The sample consisted of 82 males (mean age = 21.0, standard deviation = 6.8) and 218 females (mean age = 21.1, standard deviation = 6.8). The inclusion criteria were:

- No previous orthodontic or orthopedic treatment.
- No congenital disorder, such as cleft palate, or general physical disease.

Only one patient was excluded from this study because he had cleft lip and palate.

The radiographs were scanned with a HP Scanjet G3110 Photo Scanner (Hewlett Packard Co., Palo Alto, CA, USA). The radiographs were then traced and measured by a single examiner at Showa University in Tokyo with Power Cephalo software (ReazaNet Co., Ltd., Tokyo, Japan) to analyze the craniofacial morphology. A total of 19 hard-tissue and 5 soft-tissue reference points were localized on the radiographs (Tables 1 and 2 and Figure 1), and 24 angular (Table 3) and seven linear (Table 4) measurements were analyzed [16-18]. The same software was used to correct all of the linear measurements for magnification differences.

To investigate intraoperator error, 55 lateral cephalograms were chosen randomly and re-traced in separate sessions with a two-week interval under identical conditions. The method error was assessed with Dahlberg's formula and paired sample t-tests [19,20].

The initial statistical approach was to provide descriptive statistics of the collected data for the examined craniofacial parameters of the males and females. The gender differences in the cephalometric variables were tested with independent t-tests. The data were analyzed with a commercial social science statistical package (SPSS Statistics, Version 23.0; IBM Corporation, Armonk, NY, USA). Statistical significance was tested at  $P < 0.05$  and  $P < 0.01$ .

## Results

The statistical analysis provided a full description of the craniofacial morphology of the Egyptians (Table 5). The results showed that the Egyptians had a tendency toward the skeletal Class II with more retrognathic mandibles and more convex profiles in females ( $P = 0.03$  and  $0.016$ , respectively). In addition, females had a reduced interincisal angle ( $P = 0.016$ ) and more proclined lower incisors. For the linear dimensions, the males showed a longer anterior cranial base (N-S,  $P = 0.000$ ) as well as greater anterior facial height measurements. The tendency toward the skeletal Class II was reflected in the soft tissue measurements with reduced Z-angle values.

## Discussion

This study compared the craniofacial measurements of adult Egyptian men and women with the measurements determined by other investigators who previously studied Egyptians and the measurements of investigators who studied other ethnic groups who are thought to be close to the Egyptian race and have the same origin. These results suggest that Egyptians have a distinct craniofacial morphology that

is close to that of Caucasians who are thought to be the origin of the Egyptian race.

Egyptian adults have a tendency toward the skeletal Class II with more convex profiles, especially in females. In addition, females

Hard and soft-tissue points		
S	Sella	The center of the sella turcica.
N	Nasion	Situated at the frontonasal suture.
Or	Orbitale	The most inferior point on the inferior orbital margin.
ANS	Anterior nasal spine	The apex of the anterior nasal spine.
Point A	Subspinale	The most posterior point on the anterior contour of the upper alveolar process.
Is	Incision superius	The midpoint of the incisal edge of the most prominent upper central incisor.
As	Apex superius	The apex of the root of the most prominent upper central incisor.
Ii	Incision inferius	The midpoint of the incisal edge of the most prominent lower central incisor.
Ai	Apex inferius	The apex of the root of the most prominent lower central incisor.
Point B	supramentale	The most posterior point on the anterior contour of the lower alveolar process.
Pog	Pogonion	The most anterior point on the mandibular symphysis.
Gn	Gnathion	The most antero-inferior point on the symphysis of the chin constructed from a line drawn perpendicular to the line connecting the menton and pogonion.
Me	Menton	The most inferior point on the mandibular symphysis.
Go	Gonion	A point on the curvature of the angle of the mandible located by bisecting the angle formed by lines tangent to the posterior ramus and the inferior border of the mandible.
Ar	Articulare	The point at the junction of the posterior border of the ramus and the inferior border of the posterior cranial base (occipital bone).
Cd	Condylion	The most superoposterior point on the condylar head.
Po	Porion	The most superior point on the external auditory meatus.
Ptm	Pterygomaxillare	The intersection between the nasal floor and the posterior contour of the maxilla.
PNS	Posterior nasal spine	The apex of the posterior nasal spine.
PRN	Pronasale	The most anterior point of the nose.
Ls	Labrale superius	The most prominent point on the prolabium of the upper lip.
Li	Labrale inferius	The most prominent point of the prolabium of the lower lip.
Ils	Inferior labial sulcus	The point of greatest concavity in the midline of the lower lip between Li and Pog'.
Pog'	Soft tissue pogonion	The most prominent point on the chin.

Table 1: Hard and soft-tissue points reference.

Frankfort horizontal line (FH)	A line drawn from the superior point of the anatomic porion to the inferior point of the orbitale.
Occlusal plane (OP)	The line of best intercuspal contact between the premolars and molars.
Sella-Nasion plane (SN)	A line from the Sella to Nasion representing the anterior cranial base.
Mandibular plane (MP)	A line passing from the gonion to throat gnathion on the mandible.
Z-line	Chin-lip profile line.
Facial line	N-Pog line.
Ramus line	Ar-Go line.

Table 2: Linear reference points.

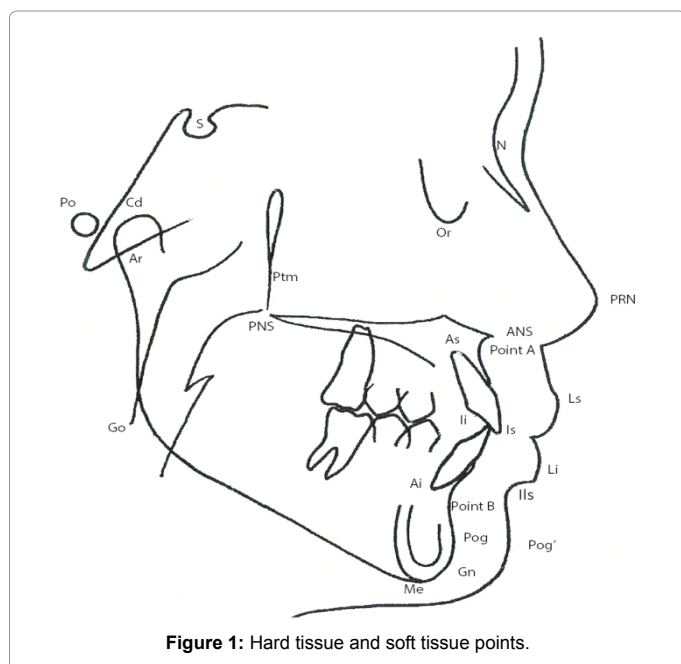


Figure 1: Hard tissue and soft tissue points.

have reduced interincisal angles and more proclined lower incisors. For the linear dimensions, the males showed longer anterior cranial bases as well as greater anterior facial height measurements. The tendency toward the skeletal Class II was reflected in the soft-tissue measurements with reduced Z-angle values.

All of the subjects were adults who had lateral cephalometric radiographs taken for diagnostic purposes. Therefore, the study had some sampling bias. The sample was taken randomly without considering any selection criteria that were based on the occlusal evaluations or facial aesthetics, which helped decrease the sampling subjectivity. Hence, the sample was more representative of the normal distribution of the different craniofacial morphologies of the Egyptian population.

Aboul-Azm et al. selected Egyptian subjects with normal occlusion and harmonious facial features [15]. Similarly, Bishara et al. selected only 90 Egyptian school children who had Class-I molar and canine relationships and no apparent skeletal discrepancies out of 500 Egyptian schoolchildren [11]. Alcalde et al. selected their sample from subjects with Class-I occlusions and good facial symmetry [7].

However, only a few studies have used random samples that were more representative of the population. For instance, Aldrees selected his sample from the records of orthodontic patients without considering their occlusion status or facial characteristics [21].

Although random samples are difficult to obtain due to ethical reasons and radiological restrictions, they are considered to have less bias or subjectivity from selections that are based on a harmonious profile and normal occlusion, for example.

Furthermore, the sample size consisted of 299 adult patients (218 females and 81 males) who were selected for the cephalometric investigation, and this was a relatively large sample size. Aboul-Azm et al. conducted their cephalometric investigations on 100 females and 100 males [15], whereas Bishara et al. used a sample of 90 (39 boys and 51 girls) subjects in their study [11]. A large sample size is more representative of the population, as the influence of outliers or

extreme observations are limited. A sufficiently large sample size is also necessary to produce results among variables that are significantly different [22].

Using Dahlberg's formula and paired sample t-tests, statistically significant differences were detected in duplicate determinations of the linear measurements: upper anterior face height (N-ANS) and the distance between the most anteriorly placed point and the nasion-supramentale line (L1-NB), as shown in Table 6. Poor identification of the nasion (N, as a common point), Anterior Nasal Spine (ANS), supramentale (point B), or the incision inferius might have been the cause for these differences.

This sample consisted of only adult subjects. This was similar to Aboul-Azm et al.'s study [15]. In contrast, Bishara et al. examined adolescent boys and girls [11]. The use of adult subjects is considered

Angular measurement	
SNA	Sella-nasion-point A angle (representing maxillary protrusion in relation to the anterior cranial base).
SNB	Sella-nasion-point B angle (representing mandibular protrusion in relation to the anterior cranial base).
ANB	Point A-nasion-point B (position of the jaws relative to each other).
FH to SN	The angle between the FH plane and SN line.
Facial angle	The angle between the facial line (N-Pog) and FH plane.
Convexity	The intersection of line N-point A to Point A-Pog.
A-B Plane	The angle between the A-B line and N-Pog line.
Mandibular plane	The angle between the MP and FH plane.
Gonial angle	The angle formed between the ramus line and the MP.
Y-axis	The angle formed by intersection of the N-Gn line and FH plane.
Ramus inclination	The angle formed between the ramus line and FH plane.
FMA	The angle between the MP and FH plane.
IMPA	The angle formed by the intersection of the MP with a line passing through the incisal edge and the apex of the root of the mandibular incisor.
FMIA	The angle between the FH with a line passing through the incisal edge and the apex of the root of the mandibular incisor.
Interincisal angle	The angle formed between lines passing through the incisal edge and the apex of the root of the maxillary and mandibular central incisors.
U-1 to FH plane	The angle formed by the intersection of the FH with a line passing through the incisal edge and the apex of the root of the maxillary incisor.
U-1 to SN Plane	The angle formed by the intersection of the SN with a line passing through the incisal edge and the apex of the root of the maxillary incisor.
L-1 to mandibular plane	The angle formed by the intersection of the MP with a line passing through the incisal edge and the apex of the root of the mandibular incisor.
U-1 to NA	The angle formed by the intersection of the N-point A line with a line passing through the incisal edge and the apex of the root of the mandibular incisor.
L-1 to NB	The angle formed by the intersection of the N-point A line with a line passing through the incisal edge and the apex of the root of the maxillary incisor.
Z angle	The angle between the Z-line (chin-lip profile line) and FH.
Nasolabial angle	The angle formed by the intersection of a columella tangent and an Ls tangent.
Mentolabial angle	The angle between Li, IIs and Pog'.
Occlusal plan angle	The angle formed between the OP and FH plane.

Table 3: Angular measurements.

Linear measurements	
N-S	Anterior cranial base length.
N-Me	Total anterior face height.
N-ANS	Upper anterior face height.
ANS-Me	Lower anterior face height.
U1-NA	The distance between the most anteriorly placed point and the NA line.
L1-NB	The distance between the most anteriorly placed point and the NB line.
Wits	Distance between the AO and BO points on the occlusal plane. (The AO point is formed by point A perpendicular to the occlusal plane, and the BO point is formed by point B perpendicular to the occlusal plane.)

Table 4: Linear measurements.

Variable	Male		Female		P value (Gender difference)
	Mean	SD	Mean	SD	
SNA	82.1	4.5	82	3.8	0.736
SNB	78.9	5.6	77.6	4.1	.030*
ANP	3.5	3.5	4.4	2.7	.021*
FH-SN	4.9	3.9	6.7	3.4	.000**
Facial angle	84.2	4.6	84.8	3.4	0.178
Convexity	5.9	7.3	8	6.1	.016*
A-P plane	-5.3	4.6	-6.5	3.8	.029*
Mandibular plane	30.6	5.7	31.1	5.4	0.411
Gonial Angle	120.9	6	120.4	6.2	0.676
Y-axis	65	4.8	63.9	4.3	0.054
Remus inclination	89.6	4.7	90.6	5.2	0.198
FMA	30.6	5.7	31.1	5.4	0.411
IMPA	92.9	9	94.9	8.5	0.093
FMIA	56.4	9.2	53.9	8.7	.031*
Interincisal angle	125.6	12.9	121.3	12.5	.016*
U1-FH	110.8	9.2	112.6	8.1	0.179
U1-SN	105.9	9.8	105.7	8.6	0.658
L1-Mandibular plane	92.9	9	94.9	8.5	0.093
U1-NA	23.8	8.4	23.8	7.9	0.828
L1-NB	27.1	7.6	30.4	7.8	.001**
Z angle	65.3	8.7	65.3	8.4	0.97
Nasolabial angle	100.65	13.7	100.7	12	0.177
Mentolabial angle	121.21	14.2	124.31	14.4	0.394
Occlusal plane	9.8	4.9	10.1	4.3	0.664
N-S	66.6	7.8	63	5.3	.000**
N-Me	120.6	10.1	113.6	9.2	.000**
N-ANS	52.8	5.3	50.5	4.8	.001**
ANS-Me	69.4	6.9	65.3	7.2	.000**
U1-NA	5.9	3.2	5.6	2.9	0.346
L1-NB	6.6	3.2	7.3	3	0.101
Wits	4.1	3.9	3.4	2.4	.046*

\*P < 0.05; \*\*P < 0.01; SD, standard deviation

Table 5: Descriptive statistics of the craniofacial morphology of Egyptian males (n = 81) and females (n = 218).

advantageous as it rules out growth-related variations in the hard and soft tissue. However, this study used computer software for the cephalometric investigations, whereas manual tracing was used in the studies of Bishara et al. and Aboul-Azm et al. [11,15]. The computer software was used as it produces more reliable results and consistent angular and linear measurements.

Regarding the craniofacial measurements, the males had a Point

A-Nasion-Point B (ANB) measurement of 3.5 degrees, which was more than the 2.75 degrees found by Aboul-Azm et al. and close to the 3.6 degrees found by Bishara et al. [11,15]. These minor differences might have been due to the use of different cephalometric investigational methods among the different studies. The value for the Wits analysis was 4.1 mm, which was higher than the -0.47 mm and 0.7 mm obtained by Aboul-Azm et al. and Bishara et al., respectively, which indicated a tendency toward bimaxillary protrusion [11,15]. This value was supported by the high values of the angle of convexity and A-B plane, which were 5.9 degrees and -5.3 degrees, respectively. The value of the facial angle was 84.2 degrees, which was less than the value obtained by Aboul-Azm et al. which was 87.1 degree, but almost similar to the 84 degrees obtained by Bishara et al. [11,15]. The mandibular plane angle was 30.6 degrees, which was higher than the 25.41 degrees found by Aboul-Azm et al. and which indicated a greater vertical dimension [15]. This finding was supported by the higher Y-axis angle, which was 65 degrees, which was more than the 61.3 degrees obtained by Aboul-Azm et al. [15]. The length of the anterior cranial base, which was indicated by the linear measurement (N-S), was 66.6 mm, which was close to the 66.2 mm obtained by Bishara et al. [11]. The reason that the adults and adolescent subjects have almost similar anterior cranial base lengths might be that the time of closure of the spheno-occipital synchondrosis ranges from 13–15 years and there is no more endochondral bone

Variable	Mean		Two-tailed significance	Dahlberg's method error
SNA	81.8	81.8	0.921	0.004
SNB	77.9	77.8	0.759	0.004
ANP	3.9	3.9	0.988	0.101
FH-SN	6.2	6	0.246	0.042
Facial angle	84.6	84.4	0.057	0.005
Convexity	7.1	7.2	0.415	0.064
A-P plane	-5.8	-5.6	0.368	-0.055
Mandibular plane	33.7	33.9	0.108	0.0125
Gonial angle	124.9	124.8	0.803	0.008
Y-axis	65.6	65.7	0.23	0.006
Ramus Inclination	88.8	89.1	0.339	0.01
FMA	33.7	33.9	0.108	0.012
IMPA	91.3	91.3	0.834	0.009
FMIA	54.9	54.8	0.552	0.015
Interincisal angle	125.6	125.5	0.692	0.009
U1-FH	109.3	109.3	0.992	0.009
U1-SN	103	103.2	0.556	0.009
L1-Mandibular plane	91.3	91.3	0.828	0.009
U1-NA	21.3	21.5	0.499	0.047
L1-NB	29.2	29.1	0.796	0.03
Z angle	66.5	66.7	0.458	0.013
Nasolabial angle	100.8	101	0.814	0.01
Mentolabial angle	129.4	130.1	0.452	0.009
Occlusal plane	10.9	11	0.526	0.284
N-S	61.4	61.6	0.535	0.017
N-Me	115.4	116	0.17	0.016
N-ANS	51.2	51.6	0.043*	0.017
ANS-Me	66.2	66.2	0.886	0.024
U1-NA	4.9	4.9	0.525	0.226
L1-NB	6.6	6.4	0.024*	0.05
Wits	3.3	3.5	0.383	0.468

\*P < 0.05; \*\*P < 0.01; SD, standard deviation

Table 6: Duplicate determinations of the measurements in the cephalometric radiographs.



growth after this age [23]. More proclined upper and lower incisor teeth were indicated by the interincisal angle of 125.6 degrees, which contrasts with the values obtained by Aboul-Azm et al. and Bishara et al., which were 127.21 degrees and 127 degrees, respectively [11,15]. Moreover, the males had a Z-angle of 65.3, which was much lower than the 71.65 degrees found by Aboul-Azm et al. [15]. The decreased value of the Z-angle indicated profile convexity (more protrusive lips), which can also be indicated by the increases in the angle of convexity and A-B plane [24].

However, the craniofacial measurements of the females showed that the ANB angle was 4.4 degrees. This value was higher than the values obtained by Aboul-Azm et al. and Bishara et al., which were 2.52 degrees and 3.2 degrees, respectively [11,15]. The SNA value was 82 degrees, which was close to the 81.06 degrees and 82.7 degrees obtained by Aboul-Azm et al. and Bishara et al., respectively [11,15]. However, the SNB value was 77.6 degrees, which was lower than the 78.5 degrees and 79.5 degrees found by Aboul-Azm et al. and Bishara et al., respectively, indicating a more retrognathic mandible [11,15]. This was confirmed by the facial angle, which was 84.8 degrees, in contrast to the 87.6 obtained by Aboul-Azm et al. [15]. The Wits measurement of 3.4 mm was higher than the -1.16 mm and -0.1 mm reported by Aboul-Azm et al. and Bishara et al. in their studies [11,15]. The angle of convexity for the females in this study was 8 degrees, which contrasted with the much smaller angle of 3.5 degrees reported by Aboul-Azm et al. [15].

The gender comparison showed a statistically significant difference in mandibular prognathism (SNB), with males showing more prognathic mandibles ( $P = 0.030$ ). In addition, the measurements of the intermaxillary protrusion (ANB) revealed a trend toward the Class-II skeletal pattern for females ( $P = 0.021$ ). This was confirmed by the statistically significant difference in the angle of convexity and A-B plane ( $P = 0.016$  and  $P = 0.029$ , respectively), which indicated a more convex profile in females. One reason could be that the mandible grows more in males than in females, which gives the males a more straight profile than the convex profile of the females [25]. Similarly, Aboul-Azm et al. found that the mandibular base was more retrognathic in females, as indicated by the SNB angle, which contrasted with the findings of Bishara et al. who found no significant difference between males and females [11,15]. In addition, the anterior cranial base length (N-S) was significantly larger in males ( $P = 0.000$ ). The linear face height measurements (N-Me, N-ANS, and ANS-Me) were also significantly larger in males ( $P = 0.000$ ,  $P=0.000$ ,  $P=0.001$ , and  $P=0.000$ , respectively). This was expected because males are generally larger than females [26].

The upper and lower incisors were significantly more upright in males than in females ( $P = 0.016$ ). The angular measurements of the lower incisor to the mandibular plane, the lower incisor to the NB line, and the lower incisor to the FH plane all indicated more protrusion of the lower incisors in females than in males. The difference was significant for the lower incisor to NB line angle ( $P = 0.01$ ) and the lower incisor to the FH plane angle ( $P = 0.031$ ). The reason might have been the compensatory mechanisms of the lower incisors due to the more retrusive position of the mandible.

In our study, we measured the nasolabial angle and the mentolabial angle, which have not been measured by Aboul-Azm et al. and Bishara et al. in their studies [11,15]. The nasolabial angle can be changed by orthodontic or surgical treatment as it depends on the anteroposterior position or inclination of the upper anterior teeth [27]. The nasolabial angle should be  $102 \pm 8$  degrees regardless of whether the orthodontic

or surgical correction is indicated [28]. This is important in determining the upper lip position during treatment planning, especially if extraction or orthognathic surgeries are part of the plan. The mentolabial angle is greatly affected by the skeletal morphology and position and angulation of lower incisors. The mean value is  $122 \pm 11.7$  but more pronounced angle can be seen in Class II and vertical maxillary deficiency cases. On the other hand, more upright lower incisors tend to enlarge the angle [27-29]. In our study, the nasolabial angle was 100.65 for males and 100.70 for females, whereas the mentolabial angle was 121.21 for males and 124.31 for females with no significant difference between males and females ( $P=0.177$  and  $P=0.394$ , respectively).

As mentioned previously, the Egyptian race is close to Mediterranean Asians, Europeans, and North Africans, which are Caucasian in origin [1-4]. Comparison of the findings of this study to those of Basciftci et al. on Anatolian Turkish adults that represent the population of Mediterranean Asia, Ousehal et al. on Moroccan subjects who represent the North African population, and Caucasian subjects show a high degree of similarity among these populations [13,14,30]. For the anteroposterior skeletal relationship, the mean value of the SNA for the Egyptians in this study was 82.09 degrees, which was close to the 82.57 degrees and 82.2 degrees of the Anatolian Turkish subjects and Caucasian subjects, respectively, but a little more than the 80.88 degrees of the Moroccan subjects [13,14,30]. Furthermore, the SNB value was 77.9 degrees, which was similar to the value of the Moroccans and close to the 78.2 degrees of the Caucasians but less than the 79.9 degrees of the Turkish subjects [13,14,30]. For the ANB angle, the values were almost the same for the Egyptian and Caucasian subjects, which were 4.1 degrees and 4 degrees, respectively [30]. However, the Moroccans and Turks showed reduced values, which were 3.17 degrees and 2.65 degrees, respectively [13,14]. These similarities among these populations support the above-mentioned theory about the origin of the Egyptian race. These minor differences might be attributed to the effect of migration to the area of the Nile valley and to the environmental changes that happened over time, especially the climatic changes [31].

## Conclusions

The outcomes of this study demonstrate the following:

- Egyptians have distinct craniofacial measurements, which are close to the measurements of Mediterranean Asians, Europeans, and North Africans, which are Caucasian in origin.
- The resulting data are a useful reference for the cephalometric values of Egyptian populations for use in clinical examinations and planning for orthodontic and orthognathic treatments together with the patient's need and desires.
- The results showed both linear and angular differences in craniofacial morphology between males and females.

## References

1. Brace CL, Tracer DP, Yaroch LA, Robb J, Brandt K, et al. (1993) Clines and clusters versus "Race:" a test in ancient Egypt and the case of a death on the Nile. *Yearb Phys Anthropol* 36: 1-31.
2. Poloni ES, Semino O, Passarino G, Santachiara-Benerecetti AS, Dupanloup I, et al. (1997) Human genetic affinities for Y-chromosome P49a,f/TaqI haplotypes show strong correspondence with linguistics. *Am J Hum Genet* 61: 1015-1035.
3. Bosch E, Calafell F, Pérez-Lezaun A, Comas D, Mateu E, et al. (1997) Population history of north Africa: evidence from classical genetic markers. *Hum Biol* 69: 295-311.
4. Coon CS (1993) *The Races of Europe*. New York, NY: The Macmillan Company pp: 400-401.

5. Snow CC, Hartman S, Giles E, Young FA (1979) Sex and race determination of crania by calipers and computer: a test of the Giles and Elliot discriminant functions in 52 forensic science cases. *J Forensic Sci* 24: 448-460.
6. Downs WB (1948) Variations in facial relationships; their significance in treatment and prognosis. *Am J Orthod* 34: 812-840.
7. Alcalde RE, Jinno T, Pogrel MA, Matsumura T (1998) Cephalometric norms in Japanese adults. *J Oral Maxillofac Surg* 56: 129-134.
8. Nanda R, Nanda RS (1969) Cephalometric study of the dentofacial complex of North Indians. *Angle Orthod* 39: 22-28.
9. Drummond RA (1968) A determination of cephalometric norms for the Negro race. *Am J Orthod* 54: 670-682.
10. Ishii N, Deguchi T, Hunt NP (2002) Craniofacial differences between Japanese and British Caucasian females with a skeletal Class III malocclusion. *Eur J Orthod* 24: 493-499.
11. Bishara SE, Abdalla EM, Hoppens BJ (1990) Cephalometric comparisons of dentofacial parameters between Egyptian and North American adolescents. *Am J Orthod Dentofacial Orthop* 97: 413-421.
12. Hassan AH (2006) Cephalometric norms for saudi adults living in the western region of Saudi Arabia. *Angle Orthod* 76: 109-113.
13. Basciftci FA, Uysal T, Buyukerkmen A (2004) Craniofacial structure of Anatolian Turkish adults with normal occlusions and well-balanced faces. *Am J Orthod Dentofacial Orthop* 125: 366-372.
14. Ousehal L, Lazrak L, Chafii A (2012) Cephalometric norms for a Moroccan population. *Int Orthod* 10: 122-134.
15. Aboul-Azm SF, Enany NM, Fahmy MA, Tamish NO, Abdallah HE (1984) The Alexandria Analysis: Radiographic Cephalometric Standards for Egyptian Adults. *Alexandria Dent J* 9: 1-8.
16. Yeong P, Huggare J (2004) Morphology of Singapore chinese. *Eur J Orthod* 26: 605-612.
17. Upadhyay RB, Upadhyay J, Agrawal P, Rao NN (2012) Analysis of gonial angle in relation to age, gender, and dentition status by radiological and anthropometric methods. *J Forensic Dent Sci* 4: 29-33.
18. Jacobson A, Jacobson R (2006) *Radiographic Cephalometry from Basics to 3-D Imaging*. Second Edition, New Malden, Surrey, UK: Quintessence Publishing Co, Inc. pp: 45-135.
19. Dahlberg G (1940) *Statistical Methods for Medical and Biological Students*. *Br Med J* 2: 358-359.
20. Harris EF, Smith RN (2009) Accounting for measurement error: a critical but often overlooked process. *Arch Oral Biol* 54 Suppl 1: S107-117.
21. Aldrees AM (2012) Pattern of skeletal and dental malocclusions in Saudi orthodontic patients. *Saudi Med J* 33: 315-320.
22. Patel MX, Doku V, Tennakoon L (2003) Challenges in recruitment of research participants. *Adv Psychiatr Treat* 9: 229-238.
23. Bishara SE (2001) *Textbook of Orthodontics*. Philadelphia, PA: Saunders pp: 43-51.
24. Rehan A, Iqbal Q, Ayub A, Ahmed I (2013) Soft Tissue Analysis In Class I and Class II skeletal Malocclusion In Patients Reporting to Department of Orthodontics, Khyber College of Dentistry, Peshawar. *Pakistan Oral Dent J* 34: 87-90.
25. Ochoa BK1, Nanda RS (2004) Comparison of maxillary and mandibular growth. *Am J Orthod Dentofacial Orthop* 125: 148-159.
26. Premkumar S (2011) *Textbook of Craniofacial Growth*. First Edition, New Delhi: Jaypee Brothers Medical: 247-249.
27. Anic-Milosevic S, Lapter-Varga M, Slaj M (2008) Analysis of the soft tissue facial profile by means of angular measurements. *Eur J Orthod* 30: 135-140.
28. Bergman RT (1999) Cephalometric soft tissue facial analysis. *Am J Orthod Dentofacial Orthop* 116: 373-389.
29. Burstone CJ (1967) Lip posture and its significance in treatment planning. *Am J Orthod* 53: 262-284.
30. Tecco S, Festa F (2007) Cervical spine curvature and craniofacial morphology in an adult Caucasian group: a multiple regression analysis. *Eur J Orthod* 29: 204-209.
31. Keita SOY, Boyce AJ (2014) Genetics, Egypt, and History: Interpreting Geographical Patterns of Y Chromosome Variation. *History in Africa* 32: 221-246.

**Citation:** Adel M, Yamaguchi T, Nadim M, Tomita D, Hikita Y, et al. (2016) Evaluation of the Craniofacial Morphology of Egyptian Adults Undergoing Orthodontic Treatment. *Dentistry* 6: 379. doi:[10.4172/2161-1122.1000379](https://doi.org/10.4172/2161-1122.1000379)

#### OMICS International: Publication Benefits & Features

##### Unique features:

- Increased global visibility of articles through worldwide distribution and indexing
- Showcasing recent research output in a timely and updated manner
- Special issues on the current trends of scientific research

##### Special features:

- 700+ Open Access Journals
- 50,000+ Editorial team
- Rapid review process
- Quality and quick editorial, review and publication processing
- Indexing at major indexing services
- Sharing Option: Social Networking Enabled
- Authors, Reviewers and Editors rewarded with online Scientific Credits
- Better discount for your subsequent articles

Submit your manuscript at: <http://www.omicsgroup.org/journals/submission>