

Impact of Oral Ingestion on Oral Health Condition in Dysphagic Inpatients

Yoko Tejima¹, Kayoko Ito², Jin Magara³, Takanori Tsujimura³, Makoto Inoue³

¹Department of Oral Health and Welfare, Niigata University Graduate School of Medical and Dental Sciences, Japan, ²Oral Rehabilitation, Niigata University Medical and Dental Hospital, Japan, ³Division of Dysphagia Rehabilitation, Niigata University Graduate School of Medical and Dental Sciences, Japan

Abstract

The present preliminary study examined how oral feeding improves the oral health status in dysphagic inpatients. Research suggests that the oral health condition of dysphagic patients is affected by not only oral health care but also oral intake because oral feeding is expected to facilitate salivary secretion and orofacial motor action. Twenty-one dysphagic patients participated in the present study. Clinical data including feeding status, oral health condition, and ingestion-related motor function were collected every week until the patients were discharged from the hospital. All recorded scores were compared between the first and last examination. The correlations among the items were investigated. Feeding status, including intake level and dietary form, was significantly improved. Oral hygiene and tongue coating were also significantly improved, while ingestion-related function was less changed. Oral hygiene, tongue coating, and tongue moisture were significantly improved with improvement in feeding status. A few parameters of the oral health condition were significantly correlated with those of ingestion-related function. Oral resumption may be important to maintain or improve oral health in dysphagic patients, although oral intake does not improve or affect the whole ingestion function in the short term.

Key Words: Dysphagia, Oral hygiene, Tongue coating, Oral intake

Introduction

Japan has the highest proportion of older people in the world. The ratio of people aged ≥ 65 years in the total population was $>26\%$ in 2015 [1]. Additionally, the working-age population is shrinking so quickly that by 2050 it will be smaller than it was in 1950 [2]. In this super-aging society, pneumonia has replaced brain stroke as the third leading cause of death [3]. This is strongly related to the fact that Japan is aging; 90% of people who died of pneumonia were aged >65 years. Teremoto et al. [4] reported that most of the patients hospitalized for pneumonia were older and that the ratio of aspiration pneumonia to total cases of pneumonia increased with age. Aspiration pneumonia is a common but sometimes serious disease that frequently occurs in older patients. Patients who develop aspiration pneumonia, particularly older patients, subsequently experience dysphagia [5-7], and aspiration pneumonia may be a risk factor for problems with oral intake.

Dysphagia rehabilitation is considered to improve ingestion function and hence oral intake [8-10]. Dysphagia rehabilitation includes swallowing compensation strategies, appropriate dietary modification, swallowing advice, and direct swallowing exercises. The exercises are designed to facilitate oropharyngeal motor strength, range of motion, and coordination. These approaches have been found to decrease aspiration and enable safe oral intake [11]. In fact, clinical reports have stated that dysphagia rehabilitation improves the capability for oral intake in patients with head and neck cancer [9] and stroke [8,10].

Oral health care is also important to prevent aspiration pneumonia in dysphagic patients. Numerous studies have shown that oral care may be useful in preventing pneumonia in institutionalized older patients irrespective of their dentate or edentate status [12-16]. Furthermore, studies have suggested that oral care with functional feeding training is also effective in preventing pneumonia in older people who

are fully dependent on tube feeding. Ueda et al. [17] reported that the frequency of pneumonia in the group who received functional training for dysphagia in addition to oral care decreased year by year, although cognitive function was not improved. It is suggested that oral health condition is affected by not only oral health care but also oral intake. We hypothesized that oral feeding is important in terms of oral hygiene, not nutrition, because mechanical or chemical stimulation using food facilitates salivary secretion and/or ingestion-related motor action, and hence cleans the oral and pharyngeal cavity. The present preliminary study examined how oral feeding improves oral health status in dysphagic patients.

Methods

Patients

Twenty-one inpatients (11 males, 10 females; mean age \pm standard deviation, 73.9 ± 10.6 years; age range, 59–91 years) at Niigata University Medical and Dental Hospital who were referred to the Unit of Dysphagia Rehabilitation between April 2014 and February 2015 participated in the present study. The participants' primary diseases included disuse syndrome or sarcopenia ($n = 11$), cerebrovascular disease ($n = 4$), pneumonia ($n = 2$), postoperative status after treatment of a brain tumor ($n = 1$), dehydration ($n = 1$), cardiovascular disease ($n = 1$), and infection of unknown etiology ($n = 1$). The mean length of hospitalization was 9.0 ± 4.2 weeks (range, 3–21 weeks), and the mean fasting period was 3.7 ± 3.1 weeks (range, 1–13 weeks). All participants gave their written informed consent. The study was reviewed and approved by the Ethics Committee of Niigata University Faculty of Dentistry (25-R28-11-21).

Corresponding author: Makoto Inoue, Division of Dysphagia Rehabilitation, Niigata University Graduate School of Medical and Dental Sciences, 2-5274 Gakkocho-dori, Chuo-ku, Niigata 951-8514, Japan, Tel: 81-25-227-0733; Fax: 81-25-227-2998; E-mail: inoue@dent.niigata-u.ac.jp

Data collection

According to the participants' clinical conditions, the dentist and dental hygienist in charge provided oral health care and functional therapy such as thermal tactile stimulation inside of the oral cavity, muscle stretches, and relaxation exercises every weekday. Clinical data including feeding status, oral health condition, and ingestion-related motor function were collected by well-trained dentists or dental hygienists once a week (Table 1) until the patients were discharged from the hospital. Evaluation of feeding status included assessment of the intake level and dietary form. The intake level was classified as oral intake only, more frequent oral intake than non-oral feeding, more frequent non-oral feeding than oral intake, and non-oral feeding only. Dietary form was classified as normal, soft, paste, jelly, and non-oral intake.

Table 1. Collected data.

Category	Evaluated item
Feeding status	Nutrition
	Dietary form
Oral health condition	Oral hygiene
	Coated tongue
	Salivary flow
	Tongue moisture
Ingestion related function	Cheek moisture
	Oral bacteria
	Orofacial movement
	Neck movement
	Phonation
	Hoarseness
	Velopharyngeal closure
	maximum phonation time
Voluntary swallowing (RSST)	
	3-ml water swallowing (MWST)

The oral health condition was classified by evaluating oral hygiene, amount of tongue coating, salivary flow rate, tongue and buccal moisture, and amount of oral bacteria. Using the oral assessment guide introduced by Eilers et al. [18-20], oral hygiene was evaluated by observing the following aspects: a) color changes including pallor, erythema, white patches, discolored lesions, and ulcers; b) moisture changes reflecting salivary impairment, including increased or decreased amounts and changes in quality or tenacity of secretions; c) cleanness issues including debris, coating, bad odor, and tooth discoloration; d) changes in mucosal integrity including cracks, fissures, ulcers, blisters, and lesions that are isolated, clustered, patchy, confluent, or generalized; and e) edema of the lips or tongue. Finally, the oral hygiene status was assigned a score of 1 to 3: 1, good; 2, normal; and 3, poor. The

amount of tongue coating was assigned a score of 1 to 4: 1, none (no tongue coating); 2, slight (a thin tongue coating covered less than two-thirds of the whole tongue surface); 3, moderate (a thin tongue coating covered more than two-thirds of the whole tongue surface or a thick tongue coating was partly observed); and 4, heavy (a thick tongue coating covered more than two-thirds of the whole tongue surface) (Figure 1). The unstimulated salivary flow rate was measured as follows. Each participant was first asked to swallow the saliva present in the mouth. Next, a cotton roll was gently put and left on the oral floor for 30s. Before and after leaving the cotton roll in the mouth, the weight was measured and the difference in the weight was calculated; this weight represented the amount of unstimulated saliva (g) for 30s. Oral Moisture Checker MUCUS[®] (Life Co. Ltd., Saitama, Japan) was used to measure intraoral moisture. The measurement sites were the center of the lingual mucosa (10 mm posterior to the tip of the tongue) and the right buccal mucosa (10 mm posterior to the corner of the lip). The sensor was manually applied to the measurement site at a pressure of about 200 g, as practiced beforehand with a manometer. To eliminate outliers, the oral mucosal wetness was measured continuously three consecutive times, and the median was used as a representative value. Finally, following a previous method [21], we measured the amount of oral bacteria using saliva. The central dorsal surface of the tongue was reciprocally scratched three times with a cotton swab to obtain a specimen. Bacteria were enumerated using a bacterial counter (Panasonic Healthcare Co., Ltd., Tokyo, Japan) to measure the number of oral bacteria; and counts were classified into seven levels: 1 ($<10^5$ colony-forming units [CFU]/mL), 2 ($\geq 10^5$ to $<10^6$ CFU/mL), 3 ($\geq 10^6$ to $<10^{6.5}$ CFU/mL), 4 ($\geq 10^{6.5}$ to $<10^7$ CFU/mL), 5 ($\geq 10^7$ to $<10^{7.5}$ CFU/mL), 6 ($\geq 10^{7.5}$ to $<10^8$ CFU/mL), and 7 ($\geq 10^8$ CFU/mL).

Ingestion-related motor function, including orofacial and neck movements, phonation, status of hoarseness, and velopharyngeal closure, was assigned a score of 1 to 4: 1, good; 2, slightly poor; 3, moderately poor; and 4, very poor or not applicable. Orofacial and neck movements were evaluated on the basis of strength and excursion. "Not applicable" indicated that the participant could not perform the task because of problems with cognitive function. In addition, the maximum phonation time was measured and a repetitive saliva swallowing test (RSST) and modified water swallowing test (MWST) were performed. In the RSST, the participants were instructed to engage in repetitive swallowing behavior as quickly as possible for 30 s, and the number of swallows was counted [22]. In the MWST, 3 mL of water was poured into the mouth, the participant was instructed to swallow, and their swallowing function was evaluated as follows: 1, the participant cannot swallow; 2, the participant can swallow but feels difficulty in respiration without coughing after swallowing; 3, the participant can swallow but coughs after swallowing; 4, the participant can swallow; and 5, the participant can swallow and additionally swallows voluntarily twice within 30 s. If the participant's score was ≥ 4 , the test was repeated twice, and the lowest score was used as the test result. A score of 4 or 5 was defined as good swallowing

function, and a score of ≤ 3 was defined as poor swallowing function [23].

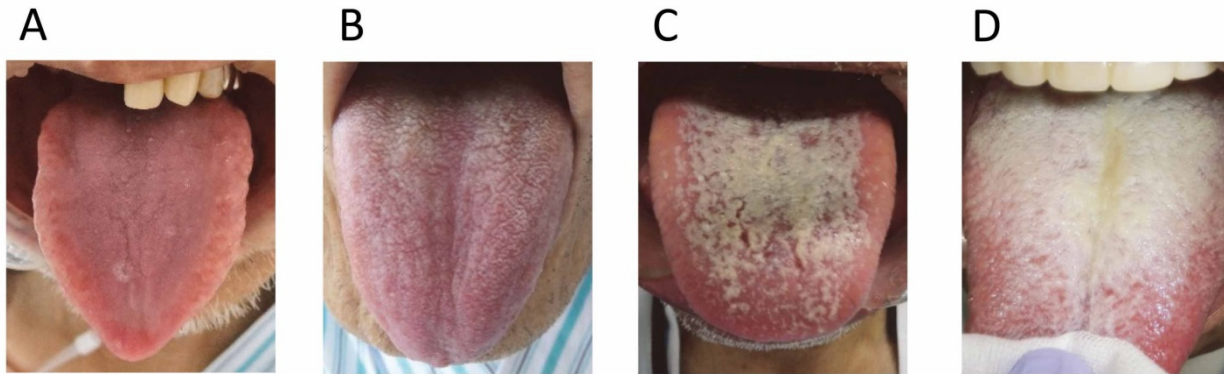


Figure 1. Examples of tongue coating. All samples were scored 1 to 4. (A) 1, none; (B) 2, slight; (C) 3, moderate; and (D) 4, heavy.

Data analysis

All recorded scores were compared between the first and last examination using a paired t-test or the Wilcoxon signed rank test. The correlations between the items of the oral health condition and between those of ingestion-related function were investigated by regression analysis. To examine the relationship between feeding status (such as the intake level or dietary form) and the oral health condition, the mean values of each item of the oral health condition at each feeding status level were compared using one-way repeated-measures analysis of variance with Tukey's honestly significant difference post-hoc test. Finally, the correlations between the items of the oral health condition and ingestion-related function were investigated using regression analysis. Tests for statistical differences and comparisons were performed using statistical software (SigmaPlot 12; Systat Software Inc., San Jose, CA, USA). Statistical significance was set at $P < 0.05$. All values are expressed as mean \pm standard deviation.

Results

General findings

The mean intervention period was 5.5 ± 2.6 weeks (range, 3–14 weeks). We first compared all parameters between first and last examinations (Table 2). The feeding status, including the intake level and dietary form, was significantly improved. Among the parameters of the oral health condition, the mean scores for oral hygiene ($P < 0.001$) and tongue coating ($P < 0.001$) were significantly improved after the clinical intervention, while the other scores did not change over time. With respect to ingestion-related function, the mean scores of only RSST and MWST were significantly increased.

Relationships among the items of the oral health condition

The relationships among the items of the oral health condition, such as oral hygiene, tongue coating, tongue and

buccal moisture, salivary flow rate, and amount of oral bacteria were investigated in all cases (Table 3).

Table 2. Comparison of all parameters between first and last examinations.

Collected items	First	Last	P
Feeding status Intake level	4 \pm 0	1.71 \pm 0.9	P < 0.001
Dietary form	5 \pm 0	2.19 \pm 0.81	P < 0.001
Oral health condition Oral hygiene	2.67 \pm 0.48	2 \pm 0.45	P < 0.001
Tongue coating	2.95 \pm 0.74	1.81 \pm 0.6	P < 0.001
Tongue moisture	23.47 \pm 10.81	30.02 \pm 2.4	P = 0.108
Cheek moisture	27.78 \pm 6.34	30.27 \pm 4.54	P = 0.106
Salivary flow rate (g)	0.06 \pm 0.07	0.14 \pm 0.28	P = 0.325
Bacteria	3.38 \pm 1.56	3.62 \pm 1.47	P = 0.424
Ingestion function Orofacial movements	2.14 \pm 0.85	1.71 \pm 0.78	P = 0.064
Neck movements	1.52 \pm 0.51	1.38 \pm 0.5	P = 0.313
Hoarseness	1.37 \pm 0.68	1.32 \pm 0.67	P = 0.750
Velopharyngeal closure	1.11 \pm 0.32	1 \pm 0	P = 0.500
Phonation	1.58 \pm 0.51	1.5 \pm 0.51	P = 0.813
Phonation time (s)	3.37 \pm 3.85	6.35 \pm 6.03	P = 0.135
RSST (swallows/30 sec)	1.45 \pm 1.43	2.15 \pm 1.81	P = 0.027
MWST	3.57 \pm 0.87	4.14 \pm 0.73	P = 0.030

Table 3. Relationships among the items of the oral health condition.

		Oral hygiene	Tongue coating	Tongue moisture	Cheek moisture	Salivary flow	Oral bacteria
Oral hygiene	CC		0.513	-0.215	-0.25	-0.227	-0.062
	P		0.001	0.042	0.007	0.013	0.504
	n		118	90	113	118	118
Tongue coating	CC			0.008	-0.107	-0.083	0.025
	P			0.942	0.256	0.368	0.79
	n			90	114	119	119
Tongue moisture	CC				0.145	0.188	0.265
	P				0.176	0.076	0.012
	n				89	90	90
Cheek moisture	CC					0.15	0.124
	P					0.112	0.188
	n					114	114
Salivary flow	CC						-0.002
	P						0.981
	n						119

There was a significant positive correlation between oral hygiene and other parameters such as tongue coating, buccal moisture, and salivary flow rate, while there was no significant correlation between oral hygiene and the amount of oral bacteria.

phonation, hoarseness, velopharyngeal closure, maximum phonation time, RSST result, and MWST result, were investigated in all cases (*Table 4*). The items that were positively correlated with many other parameters were orofacial movements, velopharyngeal closure, maximum phonation time, and MWST result.

Relationships among the items of ingestion-related function

The relationships among the items of ingestion-related function, such as orofacial movements, neck movements,

Table 4. Relationships among the items of ingestion-related function.

		Orofacial Movements	Neck Movements	Phonation	Hoarseness	Velopharyngeal Closure	Maximum Phonation time	RSST	MWST
Orofacial Movements	CC		0.267	0.119	-0.068	0.286	-0.289	-0.402	-0.266
	P		0.005	0.234	0.506	0.004	0.004	0.001	0.007
	n		107	101	99	99	100	107	103
Neck Movements	CC			-0.057	0.012	-0.152	-0.178	0.013	-0.022
	P			0.556	0.903	0.121	0.066	0.895	0.82
	n			108	106	106	107	113	111
Phonation	CC				0.357	0.199	-0.296	-0.124	-0.193
	P				0.001	0.041	0.002	0.2	0.048
	n				106	106	107	108	105
Hoarseness	CC					0.275	-0.385	0.082	-0.149
	P					0.004	0.001	0.402	0.134

	n					106	105	106	103
Velopharyngeal Closure	CC						-0.237	-0.272	-0.202
	P						0.015	0.005	0.041
	n						105	106	103
Maximum Phonation time	CC							0.268	0.465
	P							0.005	0.001
	n							107	104
RSST	CC								0.384
	P								0.001
	n								109

Relationship between feeding status and oral health condition

Because we found that both the intake level and dietary form improved during the clinical intervention, the temporal relationship between the feeding status and oral health condition and between the feeding status and ingestion-related

function was assessed to determine how the feeding status was related with those parameters. With respect to the oral health condition, oral hygiene, tongue coating, and tongue moisture were significantly improved with an improving feeding status (Figures 2 and 3). Conversely, ingestion-related function was not significantly related to the feeding status (data not shown).

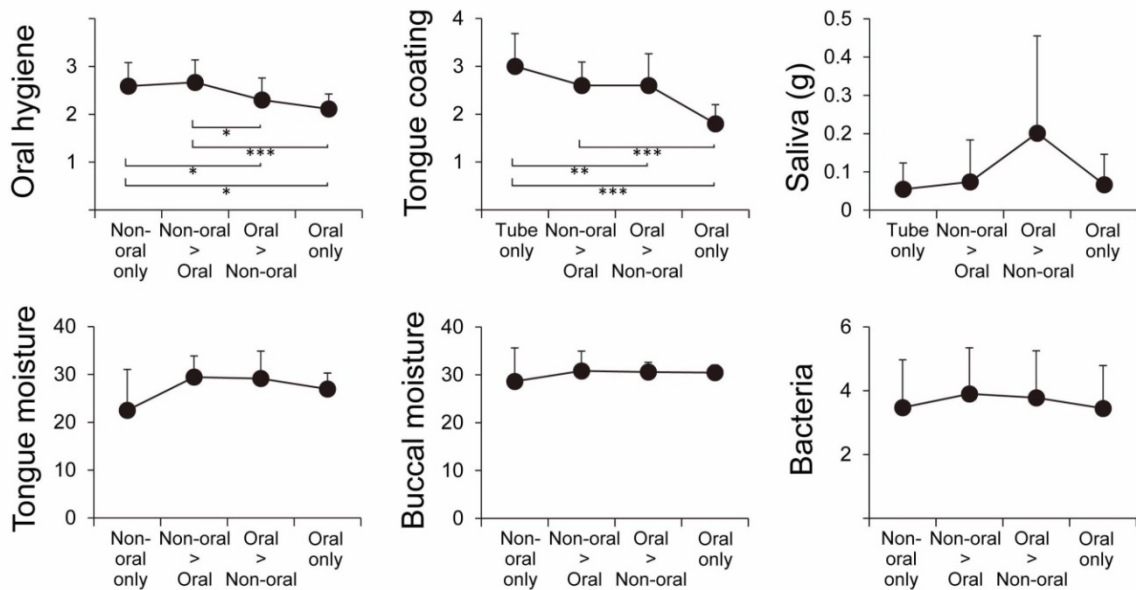


Figure 2. Relationship between intake level and oral health condition. There was a significant difference in the mean values of oral hygiene and tongue coating among intake levels. The numbers of samples of non-oral feeding only, more frequent non-oral feeding than oral intake, more frequent oral intake than non-oral feeding, and oral intake only were 21, 13, 12, and 11 for oral hygiene; 21, 14, 12, and 12 for tongue coating; 21, 14, 11, and 11 for salivary flow rate; 15, 9, 10, and 11 for tongue moisture; 21, 13, 11, and 11 for buccal moisture; and 21, 14, 11, and 11 for amount of oral bacteria, respectively. ***P < 0.001, **P < 0.01, *P < 0.05.

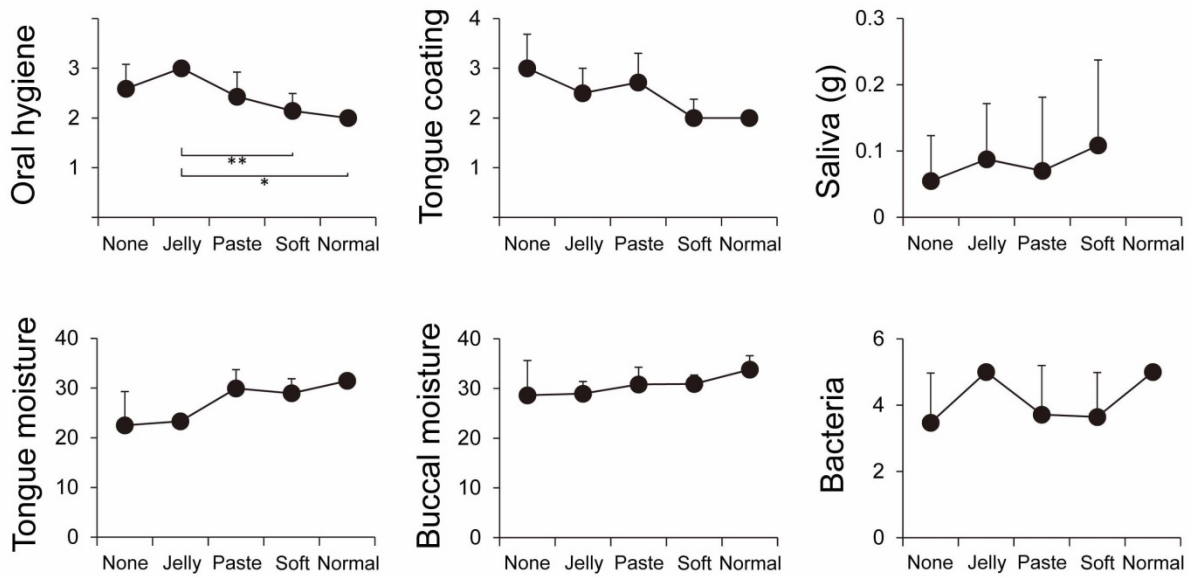


Figure 3. Relationship between dietary form and oral health condition. There were significant differences in the mean values of oral hygiene, tongue coating, and tongue moisture among intake levels. The numbers of samples of non-oral feeding (none), jelly, paste, soft food, and normal diet were 21, 4, 17, 17, and 2 for oral hygiene; 21, 4, 17, 17, and 2 for tongue coating; 21, 6, 18, 16, and 0 for salivary flow rate; 15, 3, 13, 15, and 2 for tongue moisture; 21, 4, 16, 16, and 2 for buccal moisture; and 21, 3, 17, 17, and 2 for amount of oral bacteria, respectively. ** $P < 0.01$, * $P < 0.05$.

Relationship between oral health condition and ingestion-related function

As mentioned above, oral hygiene, tongue coating, and tongue moisture improved during clinical intervention. Finally, we investigated how these parameters were related to ingestion-related function (Table 5). A few parameters were

significantly correlated with each other: oral hygiene and maximum phonation time, tongue coating and orofacial movements, tongue coating and RSST result, and tongue moisture and orofacial movements. These findings suggest that ingestion-related function is less directly related to the oral health condition.

Table 5. Relationship between oral health condition and ingestion-related function.

		Orofacial Movements	Neck Movements	Phonation	Hoarseness	Velopharyngeal Closure	Maximum Phonation time	RSST	MWST
Oral hygiene	CC	-0.027	0.152	0.159	0.098	-0.027	-0.264	0.163	-0.107
	P	0.781	0.106	0.1	0.319	0.785	0.006	0.082	0.263
	n	108	115	108	106	106	107	115	111
Tongue coating	CC	-0.213	0.11	-0.044	0.033	-0.132	0.001	0.25	-0.052
	P	0.027	0.24	0.651	0.735	0.177	0.993	0.007	0.591
	n	108	115	108	106	106	107	115	111
Tongue moisture	CC	-0.287	-0.046	-0.062	-0.02	-0.191	0.198	0.161	0.187
	P	0.008	0.672	0.577	0.859	0.09	0.077	0.133	0.089
	n	83	88	82	80	80	81	88	84

Discussion

In the present study, we showed that oral health condition parameters such as oral hygiene, tongue coating, and tongue moisture improved as the feeding status improved during our clinical intervention in dysphagic patients, while ingestion-related motor function did not significantly change. It has been reported that the oral health condition may be related not

only to the intraoral moisture and salivary flow rate [24, 25] but also to the nutritional status in older people [26-29]. In fact, our data indicate that oral hygiene is significantly correlated with other oral health condition parameters: tongue coating, tongue moisture, buccal moisture, and salivary flow rate. In contrast, motor function (excluding the RSST and MWST results) was not significantly improved and was not

closely related to oral hygiene, tongue coating, or tongue moisture.

Ueda et al. [17] evaluated the effects of functional training on the outbreak frequency of pneumonia in older dysphagic tube-fed patients. The authors showed that the frequency of pneumonia in the training group in which the jelly food was provided every week significantly decreased year by year, suggesting that functional training using foods might be effective in preventing pneumonia. Considering their results, swallowing itself might help to clean the oral and pharyngeal cavity where the oral flora exists. Furthermore, oral feeding may have effects on maintaining the motivation of patients or on improving the cleansing action of the oral cavity and pharynx by promoting secretion of stimulated saliva. Taken together, these findings indicate that oral intake resumption may be important to maintain or improve oral health. Thus, although oral intake did not improve or affect the whole function in the short term, it clearly showed a positive effect on the improvement in the oral health condition.

In the present study, ingestion-related function such as orofacial movements and other parameters was not significantly improved during the clinical intervention. In dysphagic patients, the key points of treatment are to prevent aspiration pneumonia and consider how the oral food intake is safely maintained depending on the patients' condition. Maintenance of oral hygiene and feeding status are important elements in this respect [30]. Although improving the oral health condition is expected to be associated with the maintenance or improvement of a patient's general well-being as well as the maintenance or recovery of oral or feeding functions [31,32], how the function is improved with the improvement of oral health condition remains unknown.

Indirect therapy was provided to improve motor function in the present study. Indirect therapy refers to an exercise regimen performed without a food bolus and includes stimulation of the oropharyngeal structures and the adoption of behavioral techniques such as the swallow maneuver. Haruta et al. [24] examined how an oral function promotion program for independent older people was effective in improving the oral health condition and ingestion-related function. The authors implemented the function promotion program, which included facial muscle and tongue exercises and salivary gland massage, for 3 months and found that not only oral health condition parameters such as the tongue coating, tongue moisture, and salivary flow rate, but also motor function was significantly improved. In the present study, although we expected functional training to be effective in improving ingestion-related motor function, we found that only the RSST and MWST results were improved. The mean intervention period in the present study was 5.5 weeks. Robbins et al. [33] showed positive changes in lingual strength after progressive resistance exercises for the tongue in dysphagic patients; the participants performed an 8-week lingual exercise and eventually increased their isometric tongue force and swallowing pressure. Shaker et al. [34] evaluated the effect of a novel rehabilitative exercise on restoration of deglutition in patients with deglutitive failure caused by abnormal upper esophageal sphincter opening. The authors showed that following 6 weeks of necessary exercise, all patients exhibited a significant improvement in their

function: anteroposterior upper esophageal sphincter opening, laryngeal anterior excursion, and functional outcome assessment of swallowing. Thus, the intervention period in the present study might have been shorter than that in the abovementioned reports, significantly affecting the ingestion-related motor function.

Finally, the amount of oral bacteria did not change over time. This may have been caused by the fact that the food contained carbohydrates, which are important constituents for the growth of some bacterial species [35]. We expected that chewing led to salivary secretion, which is considered to be involved in the self-cleaning function of the oral and pharyngeal cavity. In the present study, however, only two participants recovered their dietary form to normal. This may be why the salivary flow rate and amount of oral bacteria did not significantly change throughout the study.

There are several potential limitations in our study. Only 21 participants were recruited, and they had several different background diseases. The intervention period varied widely depending on the treatment course of the primary disease. In addition, because we did not evaluate the participants' nutritional status, we could not determine how the nutritional level affected the oral health condition. Future evaluation of dysphagic conditions and the effects of the intervention period or nutritional level will be required.

Conclusion

Oral care is a crucial routine to prevent aspiration pneumonia for all inpatients, especially those with dysphagia and/or older patients with a decline in orofacial muscle mass and function. After establishing a precise diagnosis, oral feeding may also be important not in terms of maintaining the nutritional level but in terms of improving oral health parameters such as oral hygiene. Oral feeding may have effects on improving the cleansing action of the oral cavity and pharynx by promoting secretion of saliva.

Acknowledgement

This study was supported by the 8020 Research Grant for fiscal years 2014 and 2015 from the 8020 Promotion Foundation.

Disclosure

The authors declare that they have no conflicts of interest.

References

1. <http://www.e-stat.go.jp/SG1/estat/ListE.do?lid=000001141833>. 2015.
2. http://www.ipss.go.jp/pp-newest/e/ppfj02/suikai_g_e.html.
3. <https://www.e-stat.go.jp/SG1/estat/GL76050103>. 2014.
4. Teramoto S, Fukuchi Y, Sasaki H, Sato K, Sekizawa K, et al. High incidence of aspiration pneumonia in community- and hospital-acquired pneumonia in hospitalized patients: a multicenter, prospective study in Japan. *Journal of the American Geriatrics Society*. 2008; **56**: 577-579.
5. Langmore SE, Terpenning MS, Schork A, Chen Y, Murray JT, et al. Predictors of aspiration pneumonia: how important is dysphagia? *Dysphagia*. 1998; **13**: 69-81.

6. Marik PE, Kaplan D. Aspiration pneumonia and dysphagia in the elderly. *Chest*. 2003; **124**: 328-336.
7. van der Maarel-Wierink CD, Vanobbergen JN, Bronkhorst EM, Schols JM, de Baat C. Meta-analysis of dysphagia and aspiration pneumonia in frail elders. *Journal of Dental Research*. 2011; **90**: 1398-1404.
8. Carnaby G, Hankey GJ, Pizzi J. Behavioural intervention for dysphagia in acute stroke: a randomised controlled trial. *Lancet Neurology*. 2006; **5**: 31-37.
9. Cousins N, MacAulay F, Lang H, MacGillivray S, Wells M. A systematic review of interventions for eating and drinking problems following treatment for head and neck cancer suggests a need to look beyond swallowing and trismus. *Oral Oncology*. 2013; **49**: 387-400.
10. Takahata H, Tsutsumi K, Baba H, Nagata I, Yonekura M. Early intervention to promote oral feeding in patients with intracerebral hemorrhage: a retrospective cohort study. *BMC Neurology*. 2011; **11**: 6.
11. Robbins J, Butler SG, Daniels SK, Diez Gross R, Langmore S, et al. Swallowing and dysphagia rehabilitation: translating principles of neural plasticity into clinically oriented evidence. *Journal of Speech Language and Hearing Research*. 2008; **51**: S276-300.
12. Abe S, Ishihara K, Adachi M, Okuda K. Oral hygiene evaluation for effective oral care in preventing pneumonia in dentate elderly. *Archives of Gerontology and Geriatrics*. 2006; **43**: 53-64.
13. Kokubu K, Senpuku H, Tada A, Saotome Y, Uematsu H. Impact of routine oral care on opportunistic pathogens in the institutionalized elderly. *Journal of Medical and Dental Sciences*. 2008; **55**: 7-13.
14. Yoneyama T, Hashimoto K, Fukuda H, Ishida M, Arai H, et al. Oral hygiene reduces respiratory infections in elderly bed-bound nursing home patients. *Archives of Gerontology and Geriatrics*. 1996; **22**: 11-19.
15. Yoneyama T, Yoshida M, Matsui T, Sasaki H. Oral care and pneumonia. Oral Care Working Group. *Lancet*. 1999; **354**: 515.
16. Yoneyama T, Yoshida M, Ohru T, Mukaiyama H, Okamoto H, et al. Oral care reduces pneumonia in older patients in nursing homes. *Journal of American Geriatric Society*. 2002; **50**: 430-433.
17. Ueda K, Yamada Y, Toyosato A, Nomura S, Saito E. Effects of functional training of dysphagia to prevent pneumonia for patients on tube feeding. *Gerodontology*. 2004; **21**: 108-111.
18. Eilers J. Nursing interventions and supportive care for the prevention and treatment of oral mucositis associated with cancer treatment. *Oncology Nursing Forum*. 2004; **31**: 13-23.
19. Eilers J, Berger AM, Petersen MC. Development, testing, and application of the oral assessment guide. *Oncology Nursing Forum*. 1988; **15**: 325-330.
20. Eilers J, Epstein JB. Assessment and measurement of oral mucositis. *Seminars in Oncology Nursing*. 2004; **20**: 22-29.
21. Kikutani T, Tamura F, Takahashi Y, Konishi K, Hamada R. A novel rapid oral bacteria detection apparatus for effective oral care to prevent pneumonia. *Gerodontology*. 2012; **29**: e560-565.
22. Aida S, Takeishi R, Magara J, Watanabe M, Ito K, et al. Peripheral and central control of swallowing initiation in healthy humans. *Physiology & Behavior*. 2015; **151**: 401-411.
23. Tohara H, Saitoh E, Mays KA, Kuhlemeier K, Palmer JB. Three tests for predicting aspiration without videofluorography. *Dysphagia*. 2003; **18**: 126-134.
24. Hakuta C, Mori C, Ueno M, Shinada K, Kawaguchi Y. Evaluation of an oral function promotion programme for the independent elderly in Japan. *Gerodontology*. 2009; **26**: 250-258.
25. Kawase Y, Ogasawara T, Kawase S, Wakimoto N, Matsuo K, et al. Factors affecting the formation of membranous substances in the palates of elderly persons requiring nursing care. *Gerodontology*. 2012; **31**: 184-193.
26. De Marchi RJ, Hugo FN, Hilgert JB, Padilha DM. Association between oral health status and nutritional status in south Brazilian independent-living older people. *Nutrition*. 2008; **24**: 546-553.
27. Dormenval V, Budtz-Jorgensen E, Mojon P, Bruyere A, Rapin CH. Associations between malnutrition, poor general health and oral dryness in hospitalized elderly patients. *Age Ageing*. 1998; **27**: 123-128.
28. Kikutani T, Yoshida M, Enoki H, Yamashita Y, Akifusa S, et al. Relationship between nutrition status and dental occlusion in community-dwelling frail elderly people. *Geriatric and Gerontology International*. 2013; **13**: 50-54.
29. Paillaud E, Merlier I, Dupeyron C, Scherman E, Poupon J, et al. Oral candidiasis and nutritional deficiencies in elderly hospitalised patients. *British Journal of Nutrition*. 2004; **92**: 861-867.
30. Inoue M. Dysphagia Rehabilitation in Japan. *Journal of Nutritional Science and Vitaminology (Tokyo)*. 2015; **61** Suppl: S72-73.
31. Poisson P, Laffond T, Campos S, Dupuis V, Bourdel-Marchasson I. Relationships between oral health, dysphagia and undernutrition in hospitalised elderly patients. *Gerodontology*. 2014; **33**: 161-168.
32. Tamura F, Kikutani T, Tohara T, Yoshida M, Yaegaki K. Tongue thickness relates to nutritional status in the elderly. *Dysphagia*. 2012; **27**: 556-561.
33. Robbins J, Kays SA, Gangnon RE, Hind JA, Hewitt AL, et al. The effects of lingual exercise in stroke patients with dysphagia. *Archives of Physiology and Medical Rehabilitation*. 2007; **88**: 150-158.
34. Shaker R, Easterling C, Kern M, Nitschke T, Massey B, et al. Rehabilitation of swallowing by exercise in tube-fed patients with pharyngeal dysphagia secondary to abnormal UES opening. *Gastroenterology*. 2002; **122**: 1314-1321.
35. Moye ZD, Zeng L, Burne RA. Fueling the caries process: carbohydrate metabolism and gene regulation by *Streptococcus mutans*. *Journal of Oral Microbiology*. 2014; **6**: 24878.