

Lacrimal Gland Emphysema

Konstantin Astafurov* and Roman Shinder

Ophthalmology, SUNY Downstate Medical Center, Brooklyn, NY, USA

*Corresponding author: Konstantin Astafurov, Department of Cell Biology, SUNY Downstate Medical Center, USA, Tel: 6467122521; Fax: 6467122521; E-mail: konstantin.astafurov@downstate.edu

Received date: April 27, 2017; Accepted date: April 27, 2017; Published date: June 01, 2017

Copyright: ©2017 Astafurov K, et al. This is an open-access article distributed under the terms of the Creative Commons Attribution License, which permits unrestricted use, distribution, and reproduction in any medium, provided the original author and source are credited.

Clinical Image

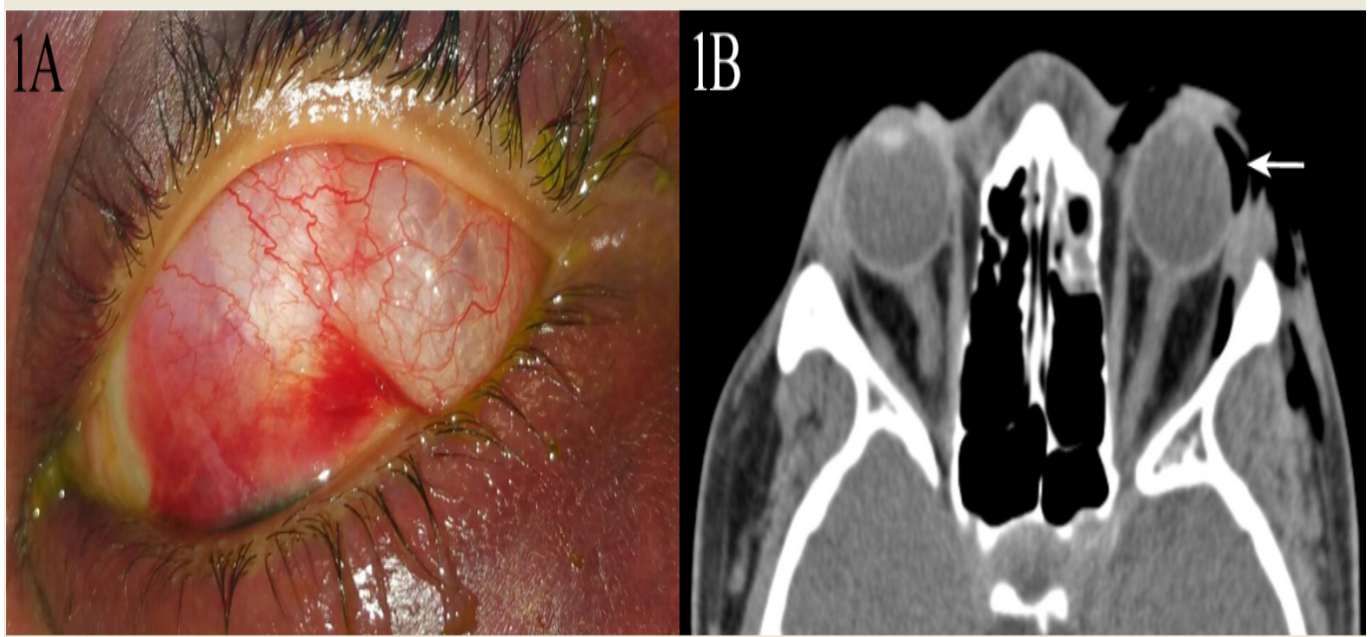


Figure 1: A 29-year-old female presented to the emergency room after blunt left periocular trauma. Examination revealed left periorbital edema and ecchymosis, patchy subconjunctival hemorrhages and air trapped within the palpebral lobe of the lacrimal gland (Figure 1A). Orbital computed tomography demonstrated left orbital floor and medial wall fractures with associated preseptal and orbital emphysema including confirmation of a well circumscribed pocket of air within the left palpebral lobe of the lacrimal gland (Figure 1B).