

# Monocolor Radiation Source Based on Low-Energy Electron Beam and Dc Fields With High Gradient of Electromagnetic Energy Density

Lin H\*

State Key Laboratory of High Field Laser Physics, Shanghai Institute of Optics and Fine Mechanics, China

A new route of monocolor radiation generation, which is based on the interaction of a low-energy electron with targeted designed driving DC fields, is proposed. It does not require the driving fields to be of high electromagnetic energy density. Instead, it relies on a high gradient of the electromagnetic energy density which can be achieved through reasonably arranging components generating DC fields.

An ideal radiation source is required to be of desirable frequency spectrum (for example, the most desirable is monocolor) and high total output power. Pursuing a high total power often drive people to consider a technique route based on electron beam [1-12]. Many routes of radiation generation [1-12] hire the electron beam in different ways. For example, in free electron laser (FEL) [1,2], an electron beam interacts with a combined field of magnetic components and incident electromagnetic (EM) wave to generate radiations at new frequency components differing from the incident wave. Bremsstrahlung refers to the interaction of such a beam with 3-D ionic Coulomb potential and usually has a broad frequency spectrum [13].

The frequency spectrum has a closed relation with the properties of the field that the beam interact with. The properties include strength and space-time shape. Moreover, people are familiar with the radiation generation from transition among quantum states. In this quantum route, the energy of an electron should be high enough to afford that of photons generated. This viewpoint often drives people to pursue high energy electron beam whose kinetic energy can afford that of photons generated. Therefore, many beam-based routes emphasize the usage of accelerator. Emphasis on high strength of driving field and accelerator will affect economy of these routes. It is worthy to study how to ensure a radiation source, when technique targets are satisfied, to be as low cost as possible. Here, we present a new route of radiation generation based on low-energy electron beam.

The essence of this route is to use “defected” driving field to interact with the beam. The phrase “defected” means that the EM energy density has a large gradient. The driving field is static or DC. For example, we can put a solenoid, as shown in Figure 1, on the boundary region of two materials whose magnetic permeability are  $\mu_1$  and  $-\mu_2$ . The difference  $|\mu_1 - \mu_2|$  will lead to contours of DC magnetic field  $B_s$  to be bent. It is well-known that if  $|\mu_1 - \mu_2| = 0$ ,  $B_s$  contours will be planes normal to the axis of the solenoid, denoted as  $z$ -axis in Figure 1  $|\mu_1 - \mu_2| \neq 0$ , will mean a gradient  $\partial_x |B_s|^2$ . The larger  $|\mu_1 - \mu_2|$  is, the larger  $\partial_x |B_s|^2$ . If a DC electric field  $E_s$  is applied along the  $x$ -direction and a low-energy electron beam is injected into such a configuration along  $y$ -direction, it is feasible to achieve the generation of a quasi-monocolor radiation if the initial position of the beam on the  $x$ - $z$  plane is appropriate. Detailed analysis is presented as below.

The DC fields that interact with the beam are:  $E_s = E_0 \bar{e}_x$  and  $B_s = B(x) \bar{e}_z = B_0 \frac{x}{w} \bar{e}_z$  if  $|x| < w$  and  $B_s = B_0 \text{sign}(x) \bar{e}_z$  elsewhere. Namely,  $B_s$  drops from  $B_0$  at  $x=w$  to  $-B_0$  at  $X=-w$ . Single-body dynamics of electron in such a field figuration can be strictly analyzed from 3D relativistic Newton equation set [14].

$$d_s [\Gamma d_s X] = -W_B \left[ \eta + d_s Y * \frac{X}{H} \right] \quad (1)$$

$$d_s [\Gamma d_s Z] = 0, \quad (2)$$

$$d_s [\Gamma d_s Y] = 0, \quad (3)$$

where  $\frac{1}{\Gamma} = \sqrt{1 - (d_s X)^2 - (d_s Y)^2 - (d_s Z)^2}$ ,  $\eta = E_0 / c B_0$ ,  $s = \omega t$ ,  $Z = \frac{z}{\lambda}$ ,  $Y = \frac{y}{\lambda}$ ,  $X = \frac{x}{\lambda}$ ,  $H = \frac{w}{\lambda}$ ,  $W_B = \frac{\omega_B}{\omega}$  and  $\lambda = c/\omega$  and  $\omega$  are reference wavelength, (which is set as 1 mm), and frequency, (which is thus  $0.3TH_z$ ). The

initial conditions read  $(X, Y, Z, d_s X, d_s Y, d_s Z)|_{t=0} = \left( X_0, 0, 0, 0, \frac{C_y}{\sqrt{1+C_y^2}}, 0 \right)$ ,

where constants  $C_y$  is initial momentum component. Eqs. (1-3) will yield

$$\Gamma^2 = \frac{1 + \left[ C - \frac{W_B X^2}{2H} \right]^2}{[1 - (d_s X)^2]} = (D + W_B \eta X)^2, \quad (4)$$

where  $D = \frac{1}{\sqrt{1+C_y^2}}$  is the initial value of and  $C = \frac{C_y}{\sqrt{1+C_y^2}} - \frac{W_B X_0^2}{2H}$ .

Finally, we obtain a conservation law

$$1 = (d_s X)^2 + \frac{1 + \left[ C - \frac{W_B X^2}{2H} \right]^2}{(D + W_B \eta X)^2} - 5 \quad (5)$$

which suggests a time-periodic behavior of  $X$ . It is easy to find, from this conservation law, that when  $\frac{X_0}{H}$  is at a given value  $< 1$  and other parameters are same, smaller  $H$  will lead to smaller time cycle of  $X$ . In principle arbitrary value of the time cycle of  $X$  can be achieved by choosing appropriate and feasible parameter-values. For example,  $B_0$  is around 1T,  $E_0$  is around 1V/cm, and  $H$  is around  $1 \mu\text{m}$ . In such a case, EM energy density of the driving field  $|E_0|^2 + |B_0|^2$  is not too high, but it has a great gradient nearby  $x=0$ . Namely, around  $x=0$ , there is a narrow but steep valley of the EM energy density profile. In ref. [14], we have pointed out that an extreme case in which  $w=0$  and  $B_s=B_0$  if  $x<0$  and  $B_s=0$  elsewhere, can effectively generate quasi-monocolor radiations whose wavelength is determined by incident position and values of  $E_0$  and  $B_0$  and in principle can be at any desirable value by choosing appropriate parameter-values. Such a step-like  $B_s$ -profile is too ideal, in contrast, slope-like  $B_s$ -profile is more realistic.

\*Corresponding author: Lin H, State Key Laboratory of High Field Laser Physics, Shanghai Institute of Optics and Fine Mechanics, P. O. Box 800-211, Shanghai 201800, China; Tel: 021-69918000; E-mail: [linhai@siom.ac.cn](mailto:linhai@siom.ac.cn)

Received June 20, 2017; Accepted June 26, 2017; Published June 30, 2017

Citation: Lin H (2017) Monocolor Radiation Source Based on Low-Energy Electron Beam and Dc Fields With High Gradient of Electromagnetic Energy Density. J Laser Opt Photonics 4: 161. doi: [10.4172/2469-410X.1000161](https://doi.org/10.4172/2469-410X.1000161)

Copyright: © 2017 Lin H. This is an open-access article distributed under the terms of the Creative Commons Attribution License, which permits unrestricted use, distribution, and reproduction in any medium, provided the original author and source are credited.

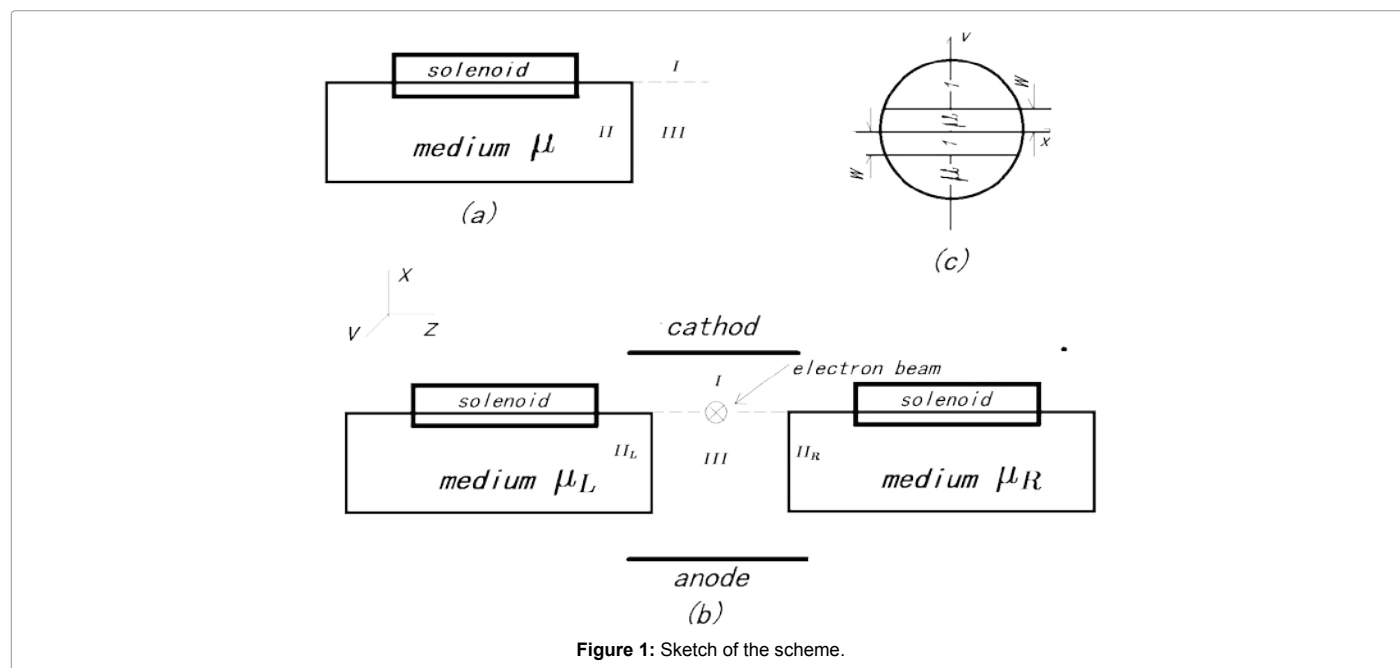


Figure 1: Sketch of the scheme.

DC driving fields, by target designing, can have a not-too-high maximum of EM energy density but a high gradient of the EM energy density. The interaction of a low-energy electron beam with such driving fields is feasible to generate monocolor radiations if the beam is of appropriate initial position and incident direction. This represents an efficient and economic route of achieving monocolor radiation source in principle at arbitrary wavelength.

#### References

- Gallerano GP, Biedro NS (2004) Overview of terahertz radiation sources. Proceed FEL Conf, Trieste, Italy, pp: 216-221.
- Stojanovic N, Drescher M (2013) Accelerator-based and laser-based sources of high-field terahertz pulse. J Phys B 46: 192001.
- Li W, Lu Y, He Z, Jia Q, Wang L (2016) Harmonics generation of a terahertz wakefield free-electron laser from a dielectric loaded waveguide excited by a direct current electron beam. Opt Lett 41: 2458-2461.
- Liu W (2015) Terahertz radiation from high-order guided mode excited by a train of electron bunches. Opt Lett 40: 3974.
- Liu S, Hu M, Zhang Y, Liu W, Zhang P, Zhou J (2011) Theoretical investigation of a tunable free-electron light source. Phys Rev E 83: 066609.
- Liu S, Hu M, Zhang Y, Li Y, Zhong R (2009) Electromagnetic diffraction radiation of a subwavelength-hole array excited by an electron beam. Phys Rev E Stat Nonlin Soft Matter Phys 80: 036602.
- Jackson JD (1999) Classic Electrodynamics. (3<sup>rd</sup>edn.), John Wiley & Sons, Inc.
- Lin H, Liu CP, Wang C (2015) A Simple and universal setup of quasimonocolor gamma ray source. von arXiv.
- Takeuchi S (2002) Relativistic E×B acceleration. Phys Rev E 66: 037402.
- Friedman Y, Semon MD (2005) Relativistic acceleration of charged particles in uniform and mutually perpendicular electric and magnetic fields as viewed in the laboratory frame. Phys Rev E 72: 026603.
- Lin H, Liu CP, Wang C, Shen BF (2015) Miniaturization of solid-state accelerator by compact low-energy-loss electron reflecting mirror. EuroPhysics Letters 109: 54004.
- Lin H, Liu CP, Wang C, Shen BF (2015) Miniaturization of Electron Storage Device. EuroPhysics Letters 111: 62001.
- Friedman M, Krall J, Lau YY, Serlin V (1988) External modulation of intense relativistic electron beams with spatial and velocity inhomogeneities J Appl Phys 64: 3353.
- Madey JM (2003) Stimulated Emission of Bremsstrahlung in a Periodic Magnetic Field. J Appl Phys 42: 1906(1971).

#### OMICS International: Open Access Publication Benefits & Features

##### Unique features:

- Increased global visibility of articles through worldwide distribution and indexing
- Showcasing recent research output in a timely and updated manner
- Special issues on the current trends of scientific research

##### Special features:

- 700+ Open Access Journals
- 50,000+ editorial team
- Rapid review process
- Quality and quick editorial, review and publication processing
- Indexing at major indexing services
- Sharing Option: Social Networking Enabled
- Authors, Reviewers and Editors rewarded with online Scientific Credits
- Better discount for your subsequent articles

Submit your manuscript at: <http://www.omicsonline.org/submission>

Citation: Lin H (2017) Monocolor Radiation Source Based on Low-Energy Electron Beam and Dc Fields With High Gradient of Electromagnetic Energy Density. J Laser Opt Photonics 4: 161. doi: [10.4172/2469-410X.1000161](https://doi.org/10.4172/2469-410X.1000161)