

Pneumomediastinum

Jose Ramon Leal Lomeli*

Regional Hospital Dr. Valentin Gomez Farias, ISSSTE, Mexico



Image 1: X-ray AP view: Subcutaneous emphysema.



Image 2: Lateral neck: Gauge reduction level larynx.

Image 3

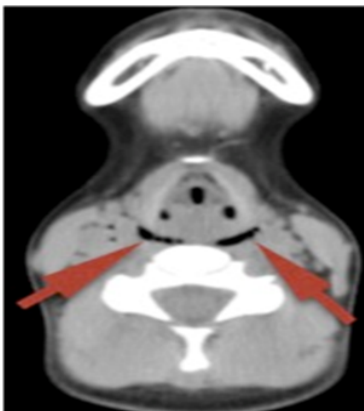


Image 3: CT coronal: Pneumomediastinum in thyroid cartilage and bronchi.

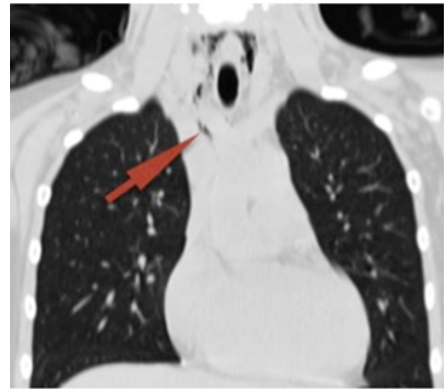


Image 4: CT coronal: Pneumomediastinum, surrounding the esophagus, trachea and the aorta in its distal portion (Hamman sign).

*Corresponding author: Jose Ramon Leal Lomeli, Regional Hospital Dr. Valentin Gomez Farias, ISSSTE, Mexico, USA, Tel: 52333360650; E-mail: jrlkobe@icloud.com

Received July 29, 2015; Accepted July 31, 2015; Published July 31, 2015

Citation: Lomeli JRL (2015) Pneumomediastinum. Otolaryngology 5: i001. doi:[10.4172/2161-119X.1000i001](https://doi.org/10.4172/2161-119X.1000i001)

Copyright: © 2015 Lomeli JRL. This is an open-access article distributed under the terms of the Creative Commons Attribution License, which permits unrestricted use, distribution, and reproduction in any medium, provided the original author and source are credited.