

Production and Partial Purification of Beta-Mannanase from *Aspergillus niger* Associated with Ilaje Lake, Ondo State, Nigeria

Oladipo OO* and Olajide Adebowale

Department of Microbiology, Federal University of Technology, PMB 704, Akure, Nigeria

Abstract

The present study aimed at the isolation, screening and partial purification of beta-mannanase from fungi isolated from soil and water samples collected from Ilaje Lake, Ondo state, Nigeria. The associated fungi were isolated and counted by standard microbiological methods. Partial purification of crude mannanase was done by standard biochemical methods. Quantitatively, mannanase production was performed in mineral salt medium into which Locust Bean Gum (LBG) had been incorporated as the sole carbon source. Enzyme activity was determined by dinitrosalicylic acid (DNSA) method, while protein content was evaluated by Lowry's method. The highest fungal counts were recorded for water sample collected from Ilaje Lake with 3.4×10^8 SFU/mL. The organisms encountered include *Aspergillus flavus*, *Rhizopus stolonifer*, *A. fumigatus*, *A. niger*, *R. japonicus*, *Penicillium italicum*, *Fusarium solani* and *Candida albicans*. All the fungal isolates encountered from these sources showed varied degrees of mannanase activities. The highest specific mannanase activity was recorded for isolate 4B1, while the lowest value was obtained with isolate 1B2. Purification of crude mannanase from *A. niger* was carried out by ammonium sulphate precipitation and gel filtration (Sephadex G-200). Fractionation of ammonium sulphate precipitated mannanase from *A. niger* on Sephadex G-200 produced two activity peaks. In this investigation, fungal isolates evaluated for mannanase production from this source gave appreciable mannanase activity and this could be applied in many industrial processes.

Keywords: Beta-mannanase; Ilaje Lake; Locust bean gum; Fungal counts; Partial purification

Introduction

Beta-mannanase otherwise known as mannan endo-1,4- β -mannosidase or 1,4- β -D-mannanase with an enzyme commission (EC) 3.2.1.78 breakdowns β -1,4-mannosidic bonds in the main chain of glucomannans, galactomannans and β -1,4-mannans [1]. It transforms the abundant mannan-rich heteromannan, glucomannan and galactomannan substrates into manno-oligosaccharides [2] and a small amount of mannose, glucose and galactose [1,3]. A number of plants, bacteria, fungi and various invertebrates had been reported to produce β -mannanase [1,3]. The mannanase of biological origins have found a variety of applications in different industrial sectors [3] including animal feed formulation, pharmaceutical products preparation, pulp biobleaching, [4] as well as pre-treatment of plant biomass for second generation biofuel production [5].

There is a greater demand for biotechnological and industrial stable enzymes with higher catalytic efficiency that can function under harsh environmental conditions. In the recent years, screening and isolation of microorganisms for the production of industrial enzymes of microbial origin with unique and excellent characteristics has become one of the focuses of research in biotechnology. Enzymes required for industrial applications should be stable at high temperature, pH and presence of salts, solvents, etc. Extracellular enzymes from microbes associated with extreme environments such as halophiles are blessed with higher catalytic power to initiate and sustain metabolic activities under high salt concentrations. Gomes and Steiner [6] and Karan and Khare [7] have been reported that enzymes from extreme environments are expected to be active and stable under more than one extreme condition.

The physicochemical analysis carried out on four different coastal waters from Ilaje, Ondo state, Nigeria revealed that they were slightly acidic with a mean pH of 6.69 and also moderately saline with a mean salinity of 16.68‰ [8]. Hence, mannanase obtained from bacteria isolated from this source are expected to be halo tolerant. Mannanase-

producing microorganisms have been reported from different sources but there has been scanty or no information on mannanase production from bacteria inhabits Ilaje Lake. Hence, enzymes from halo tolerant bacteria from this location should have an edge in terms of stability. In search of high performance mannolytic organisms; we isolated and screened different fungi from soil and water samples in Ilaje, Ondo State, Nigeria. Therefore, the present study dealt with the isolation and screening of fungal isolates for beta-mannanase production and its partial purification from *Aspergillus niger*.

Materials and Methods

Sources of sample

Water and soil samples were collected from Ilaje Lake, Ondo State, Nigeria in sterile bottles. The samples were transferred to the laboratory and were used as sources for the isolation of mannanase-producing fungi [9,10].

Isolation and identification of mannanase-producing fungi from soil and water samples

The total fungal counts from the samples were determined using the pour plate method on potato dextrose agar. The samples were serially diluted and 1ml of an appropriate dilution was used to inoculate the plate in duplicate. The plates were incubated at $28 \pm 2^\circ\text{C}$ for 72 h, after which the total colony count was determined as previously described

*Corresponding author: Oladipo OO, Department of Microbiology, Federal University of Technology, P.M.B 704, Akure, Nigeria, Tel: +2348068054636; E-mail: microladit@gmail.com

Received May 17, 2017; Accepted June 12, 2017; Published June 19, 2017

Citation: Oladipo OO, Adebowale O (2017) Production and Partial Purification of Beta-Mannanase from *Aspergillus niger* Associated with Ilaje Lake, Ondo State, Nigeria. Biochem Physiol 6: 218. doi: 10.4172/2168-9652.1000218

Copyright: © 2017 Oladipo OO, et al. This is an open-access article distributed under the terms of the Creative Commons Attribution License, which permits unrestricted use, distribution, and reproduction in any medium, provided the original author and source are credited.

by Lateef et al. [11]. At the end of incubation, the colonies were sub-cultured from the mixed cultures and identified on the bases of cultural characters (colour, shape of colony, surface and reverse pigmentation and texture of the colony) as well as microscopic structure (septate or nonseptate hyphae, structure of hyphae and conidia) [12].

Screening of mannanase-producing fungi in submerged state fermentation

Medium composition described by Mandles and Weber [12] modified by Arotupin and Olaniyi [10] was used for submerged fermentation (static condition). The basal medium contained (g/L): LBG 10 g, peptone 2 g, yeast extract 2 g, NaNO_3 2 g, KH_2PO_4 1 g, $\text{MgSO}_4 \cdot 7\text{H}_2\text{O}$ 0.5 g, KCl 0.5 g and $\text{FeSO}_4 \cdot 7\text{H}_2\text{O}$ traces. The pH of the media was adjusted to 6.8 with pH meter (Denver Instrument, Model 20 pH/Conductivity meter) prior sterilization. Then, 100 mL of the liquid medium was dispensed in 250 mL Erlenmeyer flask and sterilized at 121°C for 15 min. The sterile basal medium was inoculated with 2 discs of 8 mm diameter of the fungal strains from PDA using cork borer. The inoculated media were incubated at 30°C for 5 days at static condition. Crude enzyme preparation was obtained by centrifugation at 6000 rpm for 10 min at 4°C using refrigerated ultracentrifuge (Centurion Scientific Limited). The supernatant was used as the crude extracellular enzyme source. Each treatment was carried out in triplicates and the results obtained throughout the work were the mean of at least 3 experiments.

Enzyme assay and protein determination

Mannanase activity was assayed in the reaction mixture comprising of 0.5 mL of 1% LBG prepared in 50 mM potassium phosphate buffer pH 6.8 and 0.5 mL of supernatant at 45°C for 60 min (modified method of El-Naggar et al. [13]). At the end of the incubation period, tubes were removed from the water bath (Lamfield Medical England Model DK-600) and the reaction was terminated by the addition of 2 ml of 3,5-dinitrosalicylic acid (DNSA) reagent per tube. The tubes were incubated for 5 min in a boiling water bath for colour development and were cooled rapidly. The activity of reaction mixture was measured against a reagent blank at 540 nm. Amount of reducing sugar released was determined by the dinitrosalicylic acid reagent (DNS) [14]. One unit of mannanase activity was defined as amount of enzyme producing 1 μmol of mannose/min under the experimental conditions. The amount of protein produced in the basal medium was evaluated according to the method of Lowry et al. [15,16] using Bovine Serum Albumin (BSA) as the standard.

Mannanase purification

Mannanase purification was performed in three stages. In the first stage, the supernatant obtained after centrifugation was precipitated by the addition of ammonium sulphate to achieve 70% ammonium sulphate concentration [1]. The precipitated enzyme was then diluted in phosphate buffer 50 mM pH 7.0, and dialyzed in the same buffer. Secondly, the enzyme obtained after dialysis was loaded into ion exchange column chromatography with diethylaminoethyl (DEAE) Sephadex G-200 matrix (20 \times 2.5 cm, Pharmacia). The fractions obtained were sequentially washed with ion free water and 0.01 M Tris-HCl buffer pH 8.0. The bound protein molecules were eluted with concentration gradient of NaCl. The absorbance of each fraction collected was measured at 280 nm with UV spectrophotometer (Lab-Tech Digital) and the activity of mannanase of each fraction was determined. In the third stage, concentrated enzyme from second stage purification step was loaded onto the column chromatography

(2.5 cm in diameter and 30 cm high) which contained Sephadex G-200 (Pharmacia). The concentrated enzyme was eluted with phosphate buffer pH 7.0 at the flow rate of 20 ml/h. A fraction of 10 mL was collected at an interval of 30 minutes and the absorbance was taken at 280 nm. Fractions with mannanase activity were pooled and concentrated in glycerol solution at 30°C.

Results

Populations of mannanase-producing fungi from soil and water samples

Table 1 shows the total fungal count from each of the sources. Water sample had the highest number of fungal population of 3.4×10^8 SFU/mL, while soil sample from Ilaje Lake (2.2×10^8 SFU/g) recorded the least fungal counts.

Cultural characterization and microscopic observation of fungal isolates

Table 2 shows the cultural characterization and microscopic observation of fungal isolates associated with soil and water samples from Ilaje Lake. Eight fungal isolates were isolated from the samples. The organisms encountered include *Aspergillus flavus*, *A. fumigatus*, *A. niger*, *Rhizopus japonicus*, *R. stolonifer*, *Penicillium italicum*, *Fusarium solani* and *Candida albicans*.

Percentage occurrence of fungal isolates

Table 3 shows the percentage occurrence of fungal isolates associated with the samples. The highest percentage occurrence of 20% was obtained for *Aspergillus flavus* and *Rhizopus stolonifer*, while *Aspergillus fumigatus*, *A. niger*, *Rhizopus japonicus*, *Penicillium italicum*, *Fusarium solani* and *Candida albicans* had the same value of 10%.

Mannanase production by fungal isolates from different samples

The quantitative determination of mannan-degrading enzyme from different fungal isolates is shown in Table 4. All the fungal isolates encountered from different sources displayed varied degrees of mannanase activities. The highest mannanase activity and specific activity of 9.37 U/mL and 2.59 U/mg respectively was produced by fungal isolate 4B1 sourced from water sample, while the lowest values for mannanase activity and specific activity were obtained from 2E3 and 1B2 respectively. Protein content ranged from 3.06 mg/mL to 5.39 mg/mL was produced by the fungal isolates, with the highest protein content displayed by isolate 1B2 obtained from soil sample. Therefore, fungal isolate 4B1 was selected for purification studies because of its highest mannanase-producing potential.

Elution profile of partially purified mannanase on sephadex G-200

After 25% ammonium sulphate saturation of crude enzyme, the precipitates were dialyzed against 50 mM phosphate buffer pH 6.8 for 24 h at 4°C. Dialyzed protein was loaded onto a Sephadex G-200 column which was eluted with the same buffer. The ammonium

Sources	Fungal counts
ILS	2.2×10^8 SFU/g
ILW	3.4×10^8 SFU/ml

ILS=Soil sample from Ilaje lake.

ILW=Water sample from Ilaje lake.

Table 1: Populations of mannanase-producing fungi from soil and water samples.

Isolate code	Cultural Characteristics	Microscopic observation	Suspected organisms
1B2 and Z3E2	Greenish yellow mycelial growth	An upright conidiophores that terminates in a clavate swelling bearing phialides at the apex or radiating from the entire surface; conidia are 1-celled and globose.	<i>Aspergillus flavus</i>
1C2	Brown mycelia	Conidiospores upright, simple, terminating in elevates, swelling, bearing phialides at the apex or radiating from the entire surface, 1-celled globe often variously coloured in masses in dry basipetal chains.	<i>Aspergillus fumigatus</i>
2E3 and 4E3	Rapidly growing white colored fungus, swarms over entire plate	Non-septate mycelium gives rise to straight sporangiophores that with sporangium containing a columella; root like hyphae (rhizoid) penetrating the medium.	<i>Rhizopus stolonifer</i>
2K2	White mycelia with areas of whitish yellow	Fast growing rate with aerial mycelium. They appeared as sickle-shaped.	<i>Fusarium solani</i>
3E2	Blue mould growth	Septate mycelium bearing single conidiophores which are branched near the apex ending in phialides that carries the conidia.	<i>Penicillium italicum</i>
4B1	Black mycelia	Simple, upright conidiophores terminating in ovoid swelling.	<i>A. niger</i>
4B2	White to cream colour, smooth mycelial growth	Spherical budding cells or Blastoconidia.	<i>Candida albicans</i>
4E2	Rapidly growing white colored fungus, swarm over entire plate; then showed black spores varying in sizes	Non-septate mycelium gives rise to straight sporangiophores that sporangium; root like hyphae (rhizoid) penetrating the medium.	<i>R. japonicas</i>

Table 2: Cultural characterization and microscopic observation of fungal isolates.

Fungal isolates	% Occurrence of isolates
<i>Aspergillus flavus</i>	20
<i>A. fumigatus</i>	10
<i>Rhizopus stolonifer</i>	20
<i>Fusarium solani</i>	10
<i>Penicillium italicum</i>	10
<i>A. niger</i>	10
<i>Candida albicans</i>	10
<i>R. japonicas</i>	10

Table 3: Percentage occurrence of fungal isolates.

Source	Isolate code	Mannanase activity (U/mL)	Protein Content (mg/mL)	Specific mannanase activity (U/mg)
ILS	1B2	4.17	5.29	0.79
	1C2	4.47	3.27	1.37
	2E3	3.58	3.28	1.09
	2K2	7.13	3.30	2.16
ILW	3E2	4.20	3.38	1.24
	Z3E2	6.71	3.49	1.92
	4B1	9.37	3.62	2.59
	4B2	5.18	3.06	1.70
	4C3	3.65	3.28	1.11
	4E2	5.28	3.24	1.63

ILS=Soil sample from Ilaje lake.
ILW=Water sample from Ilaje lake.

Table 4: Mannanase production by fungal isolates from different samples.

sulphate-dialysate fraction on Sephadex G-200 tends to produce two activity peaks represented as A and B (Figure 1). Mannanase activity increased appreciably and reached A with an enzyme activity of 98.09 $\mu\text{mol}/\text{min}/\text{mL}$, while peak B had enzyme activity of 148.12 $\mu\text{mol}/\text{min}/\text{mL}$.

Summary of purification procedures

Three step purification procedures were adopted and a 7.43-fold purification was achieved with specific activity of 48.06 $\mu\text{mol}/\text{min}/\text{mg}$ (Table 5). Enzyme activity increased from 169.13 $\mu\text{mol}/\text{min}/\text{mL}$ in crude enzyme to 218.46 $\mu\text{mol}/\text{min}/\text{mL}$ after gel filtration. Crude protein and total protein decreased from 26.14 and 3920.46 mg/mL to 4.55 and 58.18 mg/mL, respectively.

Discussion

Mannanases from fungi are generally produced into culture medium supplemented with different mannan-rich substrates known

as inducers. These include Locust Bean Gum (LBG), guar gum, konjac flour and copra meal. Also, some microorganisms are capable of secreting considerable volume of extracellular enzymes into their basal media and this property has been adopted for industrial enzyme production.

The high fungal counts from water sample may be due to lack of efficient control measures in the discharge of organic wastes into the water bodies. The excessive addition of organic wastes (nutrients) to water bodies is known to stimulate excessive growth of microorganisms [10].

The fungal isolates obtained from Ilaje Lake (water and soil samples) exhibited different mannanase activities in basal media supplemented with LBG as an inducer. The production of mannanase in LBG medium had been reported for *Bacillus circulans*, *Chryseobacterium indologenes*, *Bacillus* sp. MG-33, *Bacillus amylolequifaciens*10A1 [4], *Bacillus* sp., *Aspergillus niger*, *Sclerotium rolfsii*, *Trichoderma* sp. and *Scopulariopsis candida*. The secretion of mannanases by these isolates on LBG media

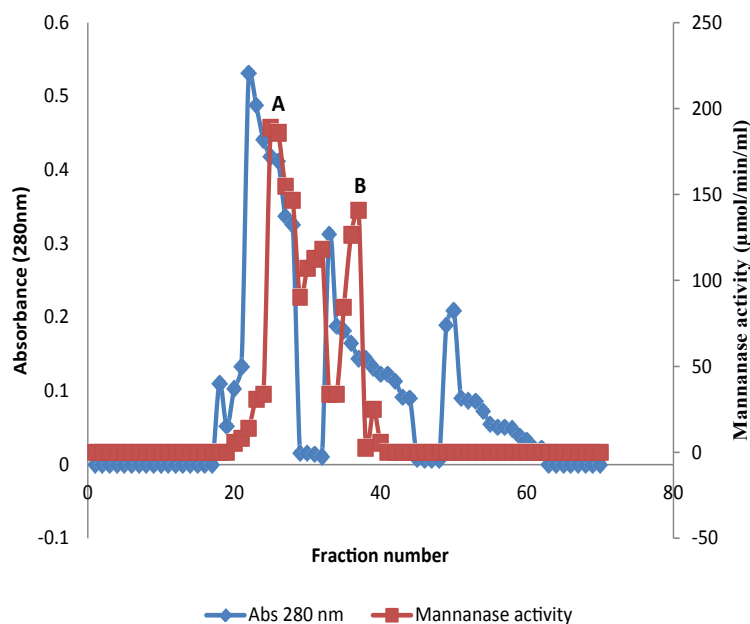


Figure 1: Elution profile of partially purified mannanase from *Aspergillus niger* on Sephadex G-200.

Step	Vol.	EA	CP	TP	TA	SA	Yield	Fold
Crude Enzyme	150	169.13	26.14	3920.46	25369.98	6.47	100	1.00
Ammonium sulphate precipitation	44.1	188.87	17.05	751.70	8328.96	11.08	32.83	1.71
Gel filtration	12.8	218.46	4.55	58.18	2796.34	48.06	11.02	7.43

EA=Enzyme activity ($\mu\text{mol}/\text{min}/\text{mL}$)
 CP=Crude protein (mg/mL)
 TP=Total protein (mg/mL)
 TA=Total activity ($\mu\text{mol}/\text{min}/\text{mL}$)
 SA=Specific activity ($\mu\text{mol}/\text{min}/\text{mg}$)

Table 5: Summary of purification of mannanase from *Aspergillus niger*.

could be attributed to the ability of their genetic makeup to secrete active mannanase coupled with varied diffusion rate [10]. All the tested fungal strains were able to produce extracellular mannanase in submerged state fermentation, although with differences in the rate of enzyme production. These differences might be attributed to the source of isolation and slight variation in their genetic makeup [10].

The variation in protein content generated by each of the strains in submerged state fermentation could be attributed to the production of variety of enzymes (amylases, cellulases, protease and xylanases) in addition to the enzyme been examined in this study. Presumably, the protein from fungal cells and metabolites rich in protein might interfere with mannanase production causing variation in protein contents, since the protein assay could only identify accumulated protein in enzyme production medium [10].

Preliminary investigations in this study revealed that *Aspergillus niger* gave the highest mannanase activity out of all the fungal isolates encountered from the lake. It was therefore selected for purification studies. Mannanase has been produced by various microorganisms and purified as reported in previous studies. Olaniyi et al. [1] produced and purified mannanase enzyme from *Penicillium italicum* isolated from yam peel. Certain researchers sourced for β -1,4-mannanase from *Scopulariosis candida* and purified it while others isolated *Geobacillus stearothermophilus* L07 from oil palm shell, screened for mannanase production after which it was purified. Some researchers purified

β -mannanase from *Aspergillus oryzae*. The two major activity peaks obtained from the elution profile could be attributed to the source of isolation coupled with environmental influences [1].

Conclusion

Aspergillus niger isolated from water sample in Ilaje, Ondo state, Nigeria showed a potential to convert substrates containing mannan into simple carbohydrates which could be readily used in many applications such as animal foods and a feed stock for production of prebiotics. It is recommended that the characterization of the purified β -mannanase and molecular study should be carried out on the isolate.

References

- Olaniyi OO, Arotupin DJ, Akinyele BJ, Bamidele OS (2014) Kinetic properties of purified β -mannanase from *Penicillium italicum*. *Br Microbiol Res J* 4: 1092-1104.
- Songsiriritthigul C, Buranabanyat B, Haltrich D, Yamabhai M (2010) Efficient recombinant expression and secretion of a thermostable GH26 mannanendo-1,4- β -mannosidase from *Bacillus licheniformis* in *Escherichia coli*. *Microb Cell Fact* 9: 20.
- Dhawan S, Kaur J (2007) Microbial mannanases: An overview of production and applications. *Crit Rev Biotechnol* 27: 197-216.
- Mabrouk MEM, El Ahwany AMD (2008) Production of β -mannanase by *Bacillus amylolequifaciens* 10A1 cultured on potato peels. *Afr J Biotechnol* 7: 1123-1128.

5. Wyman CE, Decker SR, Himmel ME, et al (2005) Polysaccharides: Structural diversity and functional versatility. CRC Press Boca Raton, FL. pp: 953-1033.
6. Gomes J, Steiner W (2004) The biocatalytic potential of extremophiles and extrozymes. *Food Technol Biotechnol* 42: 223-225.
7. Karan R, Khare SK (2010) Purification and characterization of a solvent stable protease from *Geomicrobium* sp. EMB2. *Environ Technol* 31: 1061-1072.
8. Ajibare AO (2014) Assessment of physico-chemical parameters of waters in Ilaje local government area of Ondo state, Nigeria. *International Journal of Fishery and Aquatic Studies* 1: 84-92.
9. Abe J, Hossain ZM, Hizukuri S (1994) Isolation of β -mannanase producing microorganisms. *Journal of Fermentation and Bioengineering* 3: 259-261.
10. Arotupin DJ, Olaniyi OO (2013) Screening and identification of mannanase-producing fungi isolated from selected agricultural wastes. *Br Microbiol Res J* 3: 635-644.
11. Lateef A, Oloke JK, Gueguim-Kana EB (2004) Antimicrobial resistance of bacterial strains isolated from orange juice products. *Afr J Biotechnol* 3: 334-338.
12. Mandles M, Weber J (1969) Exoglucanase activity by microorganisms. *Adv Chem* 95: 391-414.
13. El-Naggar MY, El-Aassar SA, Youssef AS, El-Sercy NA, Sercy A et al (2006) Extracellular β -mannanase production by the immobilization of the locally isolated *Aspergillus niger*. *Int J Agric Biol* 8: 57-62.
14. Miller GL (1959) Use of dinitrosalicylic acid reagent for determination of reducing sugars. *Anal Chem* 31: 426-428.
15. Lowry OH, Rosebrough NJ, Farr AL, Randall RJ (1951) Protein measurement with folin phenol reagent. *J Biol Chem* 193: 265-275.
16. Dhawan S, Jagdeep K (2007) Microbial mannanases: An overview of production and applications. *Crit Rev Biotechnol* 27: 197-216.

Citation: Oladipo OO, Adebawale O (2017) Production and Partial Purification of Beta-Mannanase from *Aspergillus niger* Associated with Ilaje Lake, Ondo State, Nigeria. *Biochem Physiol* 6: 218. doi: [10.4172/2168-9652.1000218](https://doi.org/10.4172/2168-9652.1000218)

OMICS International: Open Access Publication Benefits & Features

Unique features:

- Increased global visibility of articles through worldwide distribution and indexing
- Showcasing recent research output in a timely and updated manner
- Special issues on the current trends of scientific research

Special features:

- 700+ Open Access Journals
- 50,000+ editorial team
- Rapid review process
- Quality and quick editorial, review and publication processing
- Indexing at major indexing services
- Sharing Option: Social Networking Enabled
- Authors, Reviewers and Editors rewarded with online Scientific Credits
- Better discount for your subsequent articles

Submit your manuscript at: <http://www.omicsonline.org/submission>