

## Purification of the Mule (*Equus mulus*) IgG by Protein A - Affinity Chromatography

Justiz-Vaillant AA<sup>1\*</sup>, McFarlane NA<sup>2</sup>, Mohammed W<sup>1</sup> and Sehlule Vuma<sup>1</sup>

<sup>1</sup>Department of Para-Clinical Sciences, Faculty of Medical Sciences, The University of the West Indies, St. Augustine, Trinidad and Tobago, West Indies

<sup>2</sup>Department of Basic Medical Sciences, Faculty of Medical Sciences, The University of the West Indies, Mona Campus, Jamaica, West Indies

### Abstract

A mule is the off-spring (F1 hybrid) of two equine species: a male donkey and a female horse. Little is known about the immune system of the mule. In this investigation we isolated and characterized molecularly the mule IgG that was purified by Staphylococcal protein A (SpA) affinity chromatography, and then the purified IgG was further study by SDS-PAGE and enzyme-linked immunosorbent assay that concluded that the intact mule IgG has a molecular weight of 150 kDa.

**Keywords:** Mule; IgG; Purification; ELISA; SDS-PAGE

### Introduction

The mule, *Equus mulus*, is the off-spring (F1 hybrid) of two equine species: a male donkey and a female horse. Genetically they differ in the number of chromosomes [1,2]. A mule has been used as a farm animal from ancient times and in China it has been produced by insemination [2]. The immune system of the mule cannot be taken from granted just because we know a bit more about the immune system of its progenitors. In this research we isolated and characterized molecularly the mule IgG that was purified by Staphylococcal protein A (SpA) affinity chromatography [3], separated by SDS-PAGE and a further confirmation of its immunoglobulin nature was assayed by an SpA-enzyme-linked immunosorbent assay (ELISA).

### Methodology

Reagents and other materials used in this study were obtained from Sigma-Aldrich, Co, USA. Sera were obtained locally from healthy animals. The phlebotomy was performed by a licensed veterinary doctor that took 10 ml of blood from female mules. IgG purification was performed by SpA-affinity chromatography using a commercially-prepared kit. The instructions of the manufacturer were followed in performing this procedure. Briefly, the serum was added to a SpA-agarose column at pH 8.0 and then elution at a lower pH was followed. The isolated product was dialyzed back against PBS. The fraction eluted were assayed first by A<sub>280</sub> and then the protein molecular weight was assessed by SDS-PAGE according to Neville, 1971 [4] A SpA-sandwich ELISA was performed as confirmative test.

### SpA Sandwich-ELISA

The 96 well polystyrene microplates (U-shaped bottom) were coated with 500 ng of SpA (Sigma-Aldrich) in coating buffer for 4 hr at 37°C. The microplates were washed four times with PBS-Tween-20 and blocked with 3% non-fat milk in PBS, 25 µl/well, 1 hr, at room temperature (RT). The microplates were washed four times again. IgG eluate samples (25 µg/µl) were added and after that were incubated at RT. The microplates were washed four times and 50 µl of peroxidase-labelled protein-A diluted 1:3000 (Sigma-Aldrich) was added to each well. Then the microplates were then incubated for 1 hr at RT and washed four times. Tetramethylbenzidine (TMB) solution (50 µl) was added to the microplates. After a further incubation for 15 min in the dark, the reaction was stopped with 3M H<sub>2</sub>SO<sub>4</sub> and read in a microplate reader at 450 nm.

### Results and Discussion

Protein A is a surface antigen from the cell wall of *Staphylococcus aureus*. It has a molecular weight of 42 kDa and it has the capacity to bind many IgG from mammalian species and it is considered an immunoglobulin-binding protein [5]. In this research SpA affinity chromatography demonstrated to be efficacious for the purification of mule IgG. This IgG is a precious reagent, pure enough to produce anti-mule secondary antibodies when injected in another animal species such as rabbit, chicken or others for immunodiagnostic purposes. The secondary antibodies can then be labelled to enzymes, colloidal gold, fluorescein and biotin, just to mention some of the molecules to which it can be attached. Since mule is a big animal large amount of the blood can be taken for the preparation of antibodies [6]. On the other hand mules could be immunized with animal and human proteins to produce species-specific antibodies (Figure 1; Table 1).

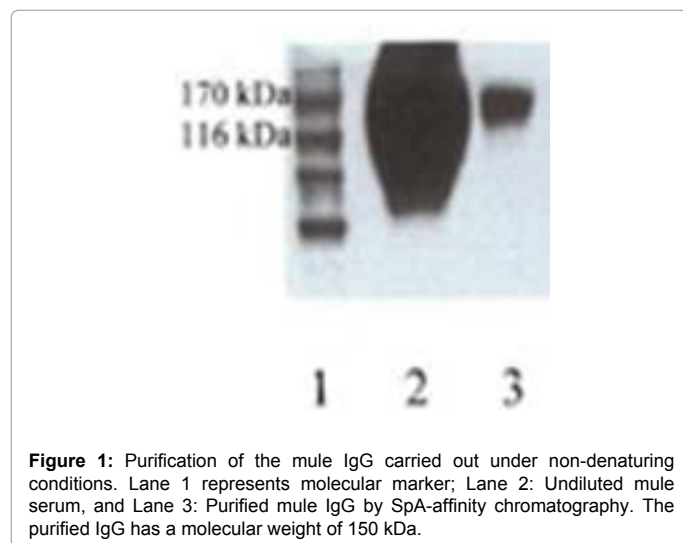
In future work we propose to analyze the IgG by SDS-PAGE under denatured conditions, and we hypothesise that the mule IgG has two heavy chains of approximately 50 kDa and to light chains of approximately 25 kDa as it occurred with other mammalian IgG molecules. In addition a study of the humoral immunity following vaccination and determined by immunodiffusion, and cell mediated-immunity determined by dinitrochlorobenzene skin test can be done later, as previously described in the literature [7]. The ELISA described here confirmed that the mule IgG binds to SpA, and support the result gotten from the purification procedure. It would be important to develop immunodiagnostic kits to monitor mule's diseases [8-10]. The experiment performed in this study demonstrates that is easy to purify mule IgG by affinity chromatography and the intact mule IgG has a molecular weight of 150 kDa. Precisely it is a novel research using a standard separation technique that is Protein-A affinity

**\*Corresponding author:** Angel A Justiz-Vaillant, Department of Para-Clinical Sciences, Faculty of Medical Sciences, The University of the West Indies, St. Augustine, Trinidad and Tobago, West Indies, Tel: +868-773-5914; Fax: +868-773-5914; E-mail: [angel.vaillant@sta.uwi.edu](mailto:angel.vaillant@sta.uwi.edu)

**Received** September 21, 2015; **Accepted** October 10, 2015; **Published** October 17, 2015

**Citation:** Justiz-Vaillant AA, McFarlane NA, Mohammed W, Vuma S (2015) Purification of the Mule (*Equus mulus*) IgG by Protein A - Affinity Chromatography. J Chromatogr Sep Tech 6: 298. doi:[10.4172/2157-7064.1000298](https://doi.org/10.4172/2157-7064.1000298)

**Copyright:** ©2015 Justiz-Vaillant AA, et al. This is an open-access article distributed under the terms of the Creative Commons Attribution License, which permits unrestricted use, distribution, and reproduction in any medium, provided the original author and source are credited.



Species IgG	Mean OD at 450 nm	Standard Deviation (SD)
Mule IgG	0.61	0.04
Human IgG (+ control)	0.81	0.02
Chicken IgY (- control)	0.14	0.008
Blank	0.06	0.003

**Table 1:** Results of the Protein A- Enzyme Linked Immunosorbent Assay (ELISA) for detection of mule IgG. This assay confirmed the previous purification procedure, since the SpA used only binds to IgG molecules.

chromatography. For first time the mule IgG: *Equus mulus* has been purified and there is not report of published papers concerning to the immune system of this equine species.

#### References

1. Anderson WS (1939) Fertile Mare Mules. J Hered 30: 549-551.
2. Rong RH, Cai HD, Yang XQ, Wei J (1985) Fertile mule in China and her unusual foal. J R Soc Med 78: 821-825.
3. Monoclonal Antibody Purification Handbook 1994. Pharmacia Biotech, Piscataway, NJ, USA.
4. Neville DM Jr (1971) Molecular weight determination of protein-dodecyl sulfate complexes by gel electrophoresis in a discontinuous buffer system. J Biol Chem 246: 6328-6334.
5. Richman DD, Cleveland PH, Oxman MN, Johnson KM (1982) The binding of staphylococcal protein A by the sera of different animal species. J Immunol 128: 2300-2305.
6. Linder E, Tallberg T (1970) Preparation of anti-IgG conjugates for immunofluorescence using immunoabsorbents for purification. Ann Med Exp Biol Fenn 48: 212-220.
7. Trindle BD, Lewis LD, Lauerman LH (1978) Evaluation of stress and its effects on the immune system of hand-reared mule deer fawns (*Odocoileus hemionus*). J Wildl Dis 14: 523-537.
8. Sanz MG, Oliveira AF, Loynachan A, Page A, Svansson V, et al. (2014) Validation and evaluation of VapA-specific IgG and IgG subclass enzyme-linked immunosorbent assays (ELISAs) to identify foals with *Rhodococcus equi* pneumonia. Equine Vet J 25: 12363.
9. Sanz MG, Oliveira AF, Page A, Horohov DW (2014) Administration of commercial *Rhodococcus equi* specific hyperimmune plasma results in variable amounts of IgG against pathogenic bacteria in foals. Vet Rec 175: 485.
10. Hooper-McGrevy KE, Giguere S, Wilkie BN, Prescott JF (2001) Evaluation of equine immunoglobulin specific for *Rhodococcus equi* virulence-associated proteins A and C for use in protecting foals against *Rhodococcus equi*-induced pneumonia. Am J Vet Res 62: 1307-1313.

Citation: Justiz-Vaillant AA, McFarlane NA, Mohammed W, Vuma S (2015) Purification of the Mule (*Equus mulus*) IgG by Protein A - Affinity Chromatography. J Chromatogr Sep Tech 6: 298. doi:10.4172/2157-7064.1000298

#### OMICS International: Publication Benefits & Features

##### Unique features:

- Increased global visibility of articles through worldwide distribution and indexing
- Showcasing recent research output in a timely and updated manner
- Special issues on the current trends of scientific research

##### Special features:

- 700 Open Access Journals
- 50,000 Editorial team
- Rapid review process
- Quality and quick editorial, review and publication processing
- Indexing at PubMed (partial), Scopus, EBSCO, Index Copernicus, Google Scholar etc.
- Sharing Option: Social Networking Enabled
- Authors, Reviewers and Editors rewarded with online Scientific Credits
- Better discount for your subsequent articles

Submit your manuscript at: <http://www.omicsgroup.org/journals/submission>