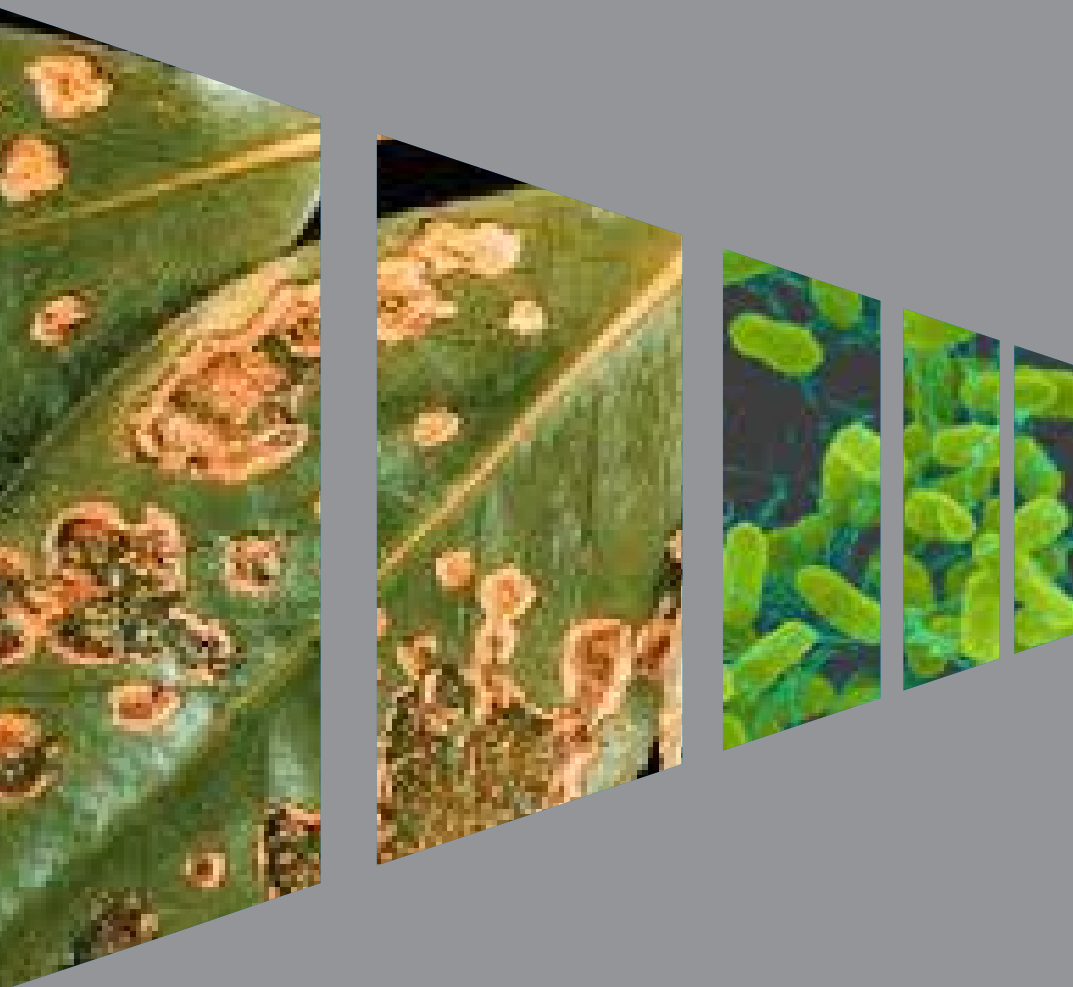


International Conference on  
**Pathology**



August 27-29, 2012 DoubleTree by Hilton, Philadelphia, USA

*S  
p  
o  
n  
s  
o  
r  
s  
h  
i  
p*





<http://omicsonline.org/pathology2012>



**Dear Potential Sponsor/Exhibitor,**

OMICS Group, the World Class Open Access Publisher and Scientific Events Organizer is hosting International Conference on Pathology during August 27-29, 2012 at Double Tree by Hilton, Philadelphia, USA.

We warmly invite you to sponsor/attend/give a speech at Pathology-2012.

OMICS Group Conferences deliver new ideas, convictions, strategies, and tactics that directly affect how you do business. No other event will offer a more impressive roster of keynote speakers, quality attendees and compelling content.

This Conference will provide a forum for exchange of ideas and authoritative views by leading scientists as well as business leaders and investors in this exciting field. Outstanding keynote speakers and well known leading scientists and experts from around the globe will be expected to share their knowledge. The event participants are typically high-level decision makers representing various parts of the industry and many participants are repeaters who know each other. This creates a relaxed and informal atmosphere with the right settings for meeting new people. When becoming our partner, we will do our utmost to satisfy your needs for involvement and exposure. Our sponsor packages offer pre-defined exposure opportunities, but don't hesitate to bring us your personal requests.

The main theme of Pathology-2012 is ***"To Promote the Rapid Translation of Scientific Research into the Practice of Pathology and Laboratory Medicine"***.

Stands for advertising of the products/services of the companies in the Pathology sectors shall be placed in the exhibition area throughout the conference.

We have the pleasure to invite and welcome you for the participation to our exciting conference. Let us meet in one of the most glorious cities in the world.

Best Regards,

Pathology-2012 Organizing Committee

<http://www.omicsonline.org/pathology2012/>

# OMICS Group Journals

The OMICS Group, a premier quality Scientific Publisher and Editors-

Journal of Clinical and Experimental Pathology

(<http://omicsonline.org/jcephome.php> )

Journal of Plant Pathology and Microbiology

(<http://omicsonline.org/jppmhome.php>) are jointly organizing the conference.

Selected contribution will be published in following  
OMICS Group Journals:

- Journal of Clinical and Experimental Pathology
- Journal of Plant Pathology and Microbiology

## Why with us???

- 200 Open Access Journals
- 20000 Editorial team
- 25000 Reviewers team
- 1 Million Readers
- Quality and quick editorial, review processing
- 21 Day rapid review process
- Publication within 7 days of acceptance

## Unique features

- User friendly/feasible website-translation of your paper to 50 world's leading languages
- Audio Version of published paper
- Digital articles to share and explore
- Sharing Option: Social Networking Enabled
- Authors, Reviewers and Editors are provided with Scientific Credits



## OMICS Group Conferences

- 50 Conferences all over the world in 2012
- Providing Delegates and Speakers across the globe with an unparalleled opportunity to create new, value generating relationships
- Well organized scientific program
- Flow of knowledge across the globe
- Participation in sessions on specific topics on which the conference is expected to achieve progress
- Opportunity to attend the presentations delivered by Eminent Scientists from all over the world

### The conference topics include:

- Anatomic Pathology
- Pathology Immunohistochemistry
- Pathology and Laboratory Medicine
- Plant Disease Management
- Plant Defence Mechanism
- Areas of Current Research in Pathology
- Plant Virology
- Bacterial Pathology & Disease Control
- Forensic Pathology
- Clinical Pathology and Diagnostic Tools
- Current Research on Plant Pathology

# Benefits / Advantages:

- Scope of enhancing marketing opportunities and collaborations
- Exposure of your corporate logo in our Pathology-2012 conference website
- Advertising high quality information of your company/products by linking through OMICS Group Journals
- Interaction with World Class Experts from both Academia/Industries helps in updating the knowledge at interactive sessions
- Share your excitement in promoting your company and ideas with Eminent Scientists, Research Scholars & Related Companies
- Global networking: In transferring and exchanging Ideas
- Conference brings together Scientific Researchers, Business Entrepreneurs and Pharma, Biotech & Healthcare Industry Developers
- We are looking forward for your active participation and make this event a memorable one

## Scientific Partnering:

Pathology-2012 conference has an excellent feature which aims at delivering unlimited opportunities for making business deals, product enhancements, cutting edge solutions for improving and elevating company's business and partnership. This unites all the leading industry professionals, business development executives, institutional investors, capitalists and corporate investors.

**Please visit for available Scientific partnership details:** <http://www.omicsonline.org/pathology2012/scientific-partnering/>

We expect your precious comments or suggestions on the structure of our Scientificpartnering, also your reference to other delegates will be highly appreciated. We look forward to receive your replies on the following questions.

1. Are you interested in joining as our Scientificpartnering partner?
2. What are you looking for? (Interaction with researchers, commercial partners, venture capital companies, or any collaboration)
3. Do you have any suggestions for our Scientific Partnering?

**Please submit your queries by email to:** [sponsor@omicsonline.org](mailto:sponsor@omicsonline.org) (or) [pathology2012@omicsgroup.com](mailto:pathology2012@omicsgroup.com)

**Fax:** +1-650-618-1414

**For further information regarding Pathology-2012, please visit:** <http://omicsonline.org/pathology2012>

## Pathology-2012

### Editorial Board Members of Supporting Journals:

#### Chandradhar Dwivedi

South Dakota State University, USA

#### Rodrigo A. Valverde

Louisiana State University, USA

#### Leland Stanley Pierson III

University of Arizona, USA

#### C.O. Thoen

Iowa State University, USA

#### Guangming Zhong

University of Texas Health Science Center, USA

#### James Francis White

Rutgers University, USA

#### Fernando Villalta

Meharry Medical College, USA

#### Jun Li

University of Minnesota, USA

#### Badal C. Saha

National Center for Agricultural, USA

#### Anthony Oyegoke Adesemoye

University of California, USA

#### Maher Al Rwahnih

University of California, USA

#### Chenping Xu

Rutgers University, USA

#### Mark T Muller

University of Central Florida, USA

#### John Hart

University of Chicago Medical Center, USA

#### Jaroslava Halper

The University of Georgia, USA

#### K T Jerry Yeo

The University of Chicago, USA

#### Michael J Iatropoulos

New York Medical College, USA

#### Adel El-Naggar

The University of Texas, USA

#### Jinsong Liu

The University of Texas, USA

#### David Chhieng

Yale University, USA

#### Diponkar Banerjee

University of British Columbia, USA

#### David L. Rimm

Yale University, USA

#### Dario Marchetti

Baylor College of Medicine, USA

#### Gustave L. Davis

Yale University, USA

### Sponsorship and Exhibitor Benefits Program Congress Corporate Workshops

The Congress provides sponsoring companies to present corporate workshops in parallel to the Congress program. During these time companies can present new scientific approaches and technical research methods. This is an excellent opportunity to showcase new and interesting technologies to attendees. Over the past years the workshops have proven to be popular. The corporate workshops will be presented as breakfast, lunch or dinner workshops with a maximum of three workshops per time period on the dates noted below.

Registration to these workshops is free to all Congress delegates. The workshop program will be promoted prior to the Congress via the Congress website, Pathology-2012, newsletters (Approximately 1,00,000 email recipients) and the final program book.

**NOTE:** No separate industry or corporate events may be held during the Congress period (August 27, 07:00 AM to August 29, 11:00 PM) without an agreement in writing from the Pathology-2012 Organizers.

## WORKSHOP AVAILABILITY

|           |   |  |   |        |
|-----------|---|--|---|--------|
| Breakfast | Non-exclusive time slot:<br>07:00 AM - 08:30 AM<br>August 28-29, 2012 | The opportunity exists to host a Congress breakfast.<br>This opportunity to be discussed through the Organizers. | Cost: TBD<br>Opportunities Available: 2 | Code-B |
| Luncheons | Non-exclusive time slot:<br>12:00 PM - 01:00 PM<br>August 27-29, 2012 | The opportunity exists to host a Congress luncheon.<br>This opportunity to be discussed through the Organizers.  | Cost: TBD<br>Opportunities Available: 3 | Code-L |
| Dinner    | Non-exclusive time slot:<br>07:00 PM - 09:00 PM<br>August 27-28, 2012 | The opportunity exists to host the Congress dinner.<br>This opportunity to be discussed through the Organizers.  | Cost: TBD<br>Opportunities Available: 2 | Code-D |

# SPONSOR OPPORTUNITIES

## Elite Sponsor

- Two Corporate Sponsored Workshop slots (must honor deadlines and audio visual included)
- Two complimentary exhibit booths with priority to purchase exhibition space and choose booth location (3X3 Sqm each booth size)
- Four (total) complimentary registrations
- Logo recognition on congress website front page with link and logo recognition on congress sponsorship page, logo recognition on corresponding OMICS Group journal home page
- One A4 color advertisement in the congress Program or Book of Abstracts (excluding cover pages)
- Three inserts provided by the sponsor in the congress delegate bags
- One post congress e-mail message to consented congress registrants up to 60 days after the congress (content to be provided by the sponsor approved and distributed by corresponding Journal)
- 10% off the cost of two additional purchased sponsorship items
- Priority to purchase additional sponsorship items

## Gold Sponsor

- One Corporate Sponsored Workshop slot (must honor deadlines, catering and audio visual included)
- One complimentary exhibit booth with priority to purchase exhibition space and choose booth location (Booth size 3X3 Sqm)
- Three complimentary congress registrations

- Logo recognition on congress website front page with link and logo recognition on congress sponsorship page
- One A4 color advertisement in the congress Program or Book of Abstracts (excluding cover pages)
- Two inserts provided by the sponsor in the congress delegate bags
- 10% off the cost of two additional purchased sponsorship items
- Priority to purchase additional sponsorship items

## Silver Sponsor

- Two complimentary congress registrations
- One complimentary exhibit booth with priority to purchase exhibition space and choose booth location (Booth size - 3X3 Sqm)
- Logo recognition on congress website sponsorship page
- One A4 color advertisement in the congress Program or Book of Abstracts (excluding cover pages)
- One insert provided by the sponsor in the congress delegate bags
- Priority to purchase additional sponsorship items

## Exhibition

- One complimentary congress registration
- One exhibit booth (Size-3X3 Sqm)
- Logo recognition on congress website sponsorship page
- One insert provided by the exhibitor in the congress delegate bags

| ADDITIONAL SPONSORSHIP OPPORTUNITIES                |  |   |         |
|---|--|---|---------|
| Delegate Bag/Satchel                                | Each registered participant will receive a satchel containing the Congress material. The sponsor logo will be included on the bag. | Cost: TBD<br>Opportunities Available: 1 | Code-BS |
| Delegate gifts/pens/posters/awards/speaker/ sponsor | Sponsors will be recognized for Each support.  | Cost: TBD                               | Code-X  |

**These are a selection of sponsorship opportunities. Should you have additional ideas, please contact the organisers for further discussion.**

**Avail the Opportunity!!!**

### Exhibition Details:

#### Exhibition Dates

Dates of Exhibit: August 27-29, 2012  
Date of Booth Set-up: August 26, 2012 Sunday (Evening)

#### Payment

After receipt of the completed contract, the total amount will be invoiced.

### Conference Secretariat

OMICS Group Conferences  
5716 Corsa Ave., Suite 110, West Lake  
Los Angeles, CA 91362-7354, USA  
Ph: +1-650-268-9744, Fax: +1-650-618-1414  
Toll free: 1-800-216-6499 (USA & Canada)  
1-800-651-097 (Australia), 0805-080048 (Europe)  
Email: pathology2012@omicsgroup.com



# International Conference on Pathology

August 27-29, 2012 DoubleTree by Hilton, Philadelphia, USA

## SPONSORSHIP/EXHIBITION APPLICATION FORM

|                                    |                      |
|------------------------------------|----------------------|
| Name of the Organization/Company   | <input type="text"/> |
| Sponsorship Package of your Choice | <input type="text"/> |
| Country                            | <input type="text"/> |
| State                              | <input type="text"/> |
| Address                            | <input type="text"/> |
|                                    | <input type="text"/> |
| Email                              | <input type="text"/> |
| Tel                                | <input type="text"/> |
| Fax                                | <input type="text"/> |

Please Select the Appropriate Level

Elite Sponsor       Gold Sponsor       Silver Sponsor       Exhibition

Sponsorship Amount

For more details:

<http://www.omicsonline.org/pathology2012/>

Email: [sponsor@omicsonline.org](mailto:sponsor@omicsonline.org) (or) [pathology2012@omicsgroup.com](mailto:pathology2012@omicsgroup.com)

### PAYMENT INFORMATION

Please invoice

Credit Card Please debit my:

Card No:  DISCOVER  MasterCard  VISA  AMERICAN EXPRESS  Others

Expiry Date: .....

Signature: .....

Credit Card billing address: .....

Contact name and number for card holder: .....

Please note that cards will be debited within 7 days of your registration.

Yes I agree to the terms and conditions as stated on this form.

Delegates who do not pay their bookings are requested to provide a copy of bank transfer / credit card / cheque details to help payment allocation. Staff at the event will request a credit card guarantee for delegates without proof of payment.

**Credit Card Payment:** We are accepting all major Credit Cards/Debit Cards including American Express, Discover, Master Card and Visa. (Processing Charges: Visa 1%, Master 2%, Others 3%)

Pay the amount by wire transfer in US Dollars through " SWIFT MT 103" to

- Beneficiary's Name: **OMICS Publishing Group**
- Beneficiary's Account No: **203273081**
- ABA ROUTING #: **321171184**
- Beneficiary's Bank Address: Citibank, N.A., Palo Alto, 250 University Ave. CA 94301
- Bank Phone: +1-650-322-5231, Bank Fax: +1-650-295-0409
- Beneficiary's Address: 1058 Reed terrace, Ste 1, Sunnyvale, CA 94086 USA.
- Beneficiary's Phone: +1-650-268-9744, Fax:+1-650-618-1414 (USA)

**CHECK PAYMENT:** Check should be in favor of **OMICS Publishing Group**

- Please send the check to : CITIBANK, N.A., PALO ALTO, 250 UNIVERSITY AVE. CA 94301 (This is our financial centre address)

**E-CHECK PAYMENT (USA only):** [http://omicsonline.org/pay\\_echeck.php](http://omicsonline.org/pay_echeck.php)

Conference Secretariat  
 OMICS Group Conferences  
 5716 Corsa Ave., Suite 110, Westlake, Los Angeles, CA 91362-7354, USA  
 Phone: +1-650-268-9744, Fax: +1-650-618-1414  
 Toll free: +1-800-216-6499 (USA & Canada), +1-800-651-097 (Australia), 0805-080048 (Europe)  
 Email: [pathology2012@omicsgroup.com](mailto:pathology2012@omicsgroup.com)