

Brief Review Notes on Arthritis Analysis

Shivashankar*

Department of Life Science, Bangalore University, Mysore Rd, Jnana Bharathi, Bengaluru, Karnataka 560056, India

Abstract

This composition describes several common features about arthritis regarding nature, various forms and probable causes for its circumstance during a simplified manner. Generally, it is a collection of conditions together nomenclature as "Arthritis". Nearly 47 million people within the US alone are littered with this complaint. Encyclopedically, it imposes a large financial burden. Considering medical condition, the complaint exerts medium to severe problem at various bone-joints displaying inflammation as a typical symptom which constantly turns serious, incapacitating the individualities through pain, swelling and harshness at those affected joints. Statistically, women over the menopausal stage fall because the major victims. Among the victims of either commerce, about half suffers from Osteoarthritis (OA). Next in line, are those having the matter of Rheumatic arthritis (RA).

Keywords: Arthritis; Rheumatoid Arthritis; Osteoarthritis

Introduction

Arthritis is a combinatorial phrase originated via way of means of the combination of Latin and Greek. In Greek, "Arthron" indicates joint and in Latin "Itis" specifies irritation/inflammation [1]. Arthritis is the swelling and tenderness of 1 or greater joints. Around 10 million humans with inside the UK are concept to have arthritis. It can have an effect on humans of all ages – even youngsters and teenagers. Some kinds of arthritis are greater not unusual place in older humans. The principal signs and symptoms of arthritis are joint ache and stiffness, which generally get worse with age. Arthritis isn't synonymous with arthralgia, which refers to ache localized to a joint; no matter the beginning of the ache. History and bodily exam are critical in spotting the form of arthritis, at the same time as extra laboratory and imaging can also additionally from time to time be important for confirming the diagnosis [2].

What is a joint and the way does it work?

A joint is in which or greater bones meet, consisting of with inside the fingers, knees, and shoulders. Joints maintain bones in vicinity and permit them to transport freely inside limits. Most of the joints in our frame are surrounded via way of means of a sturdy tablet. The tablet is packed with a thick fluid that enables to lubricate the joint. These drugs maintain our bones in vicinity. They do that with the assist of ligaments. These are a piece like very sturdy elastic bands. The ends of the bones inside a joint are coated with cartilage. This is a clean however difficult layer of tissue that permits bones to drift over each other as you move. If we need to transport a bone, our mind offers a sign to the muscle, which then pulls a tendon, and that is connected to the bone. Muscles consequently have a critical position in assisting a joint

Types of arthritis

- Rheumatoid arthritis
- Osteoarthritis
- Polyarticular arthritis
- Gouty arthritis
- Psoriatic arthritis

Rheumatoid arthritis

Rheumatoid arthritis is an autoimmune sickness that reasons persistent irritation of the joints. Autoimmune illnesses arise whilst the

frame's tissues are mistakenly attacked via way of means of their very own immune system. [3] The onset of this disease is generally from the age of 35 to 60 years, with remission and exacerbation. It also can afflict younger kids even earlier than the age of sixteen years, called juvenile RA (JRA) that is much like RA besides that rheumatoid aspect isn't found. In the West, the superiority of RA is assumed to be 1–2% [5, 6], and 1% worldwide [4]. Joint pain, stiffness, swelling affecting a couple of joints ii. Symmetrical signs affecting each aspects of the body iii. Morning stiffness lasting longer than 30 minutes I.V. Additional signs like fatigue, fever, and malaise [5]. The motive for the impairment of joint are because of the multifaceted interplay of the immune modulators. In the development of rheumatoid arthritis, few cells like B cells, T cells, macrophages (synoviocytes) play a chief position with inside the development of immunological actions. B cells will improvise the inflammatory method via way of means of generating auto antibodies like rheumatoid aspect, anticitrullinated protein antibody. T cells will spark off macrophages which certainly will motive the overproduction of inflammatory cytokines like TNF- α , IL-1 β , IL-6. The amplified fabrication of T and B cells will bring about the fabrication of cytokines and chemokines results in the improve with inside the T cell, B cell, and macrophage interface. Inflammatory cytokines will convince the cells of synovial to discharge tissue mortifying matrix metalloproteases. Bone erosion takes place because of the development of osteoclast via way of means of TNF- α [6].

Etiology

The predominant reason of the ailment isn't known, and it isn't but clean how this inflammatory ailment has been prompted and starts.

***Corresponding author:** Shivashankar, Department of Life Science, Bangalore University, Mysore Rd, Jnana Bharathi, Bengaluru, Karnataka 560056, India, E-mail: shiva12@gmail.com

Received: 01-Feb-2023, Manuscript No: ijrdbl-22-84600, **Editor assigned:** 03-Feb-2023, PreQC No: ijrdbl-22-84600(PQ), **Reviewed:** 17-Feb-2023, QC No: ijrdbl-22-84600, **Revised:** 21-Feb-2023, Manuscript No: ijrdbl-22-84600(R) **Published:** 28-Feb-2023, DOI: 10.4172/2278-0238.1000147

Citation: Shivashankar (2023) Brief Review Notes on Arthritis Analysis. Int J Res Dev Pharm L Sci, 9: 147.

Copyright: © 2023 Shivashankar. This is an open-access article distributed under the terms of the Creative Commons Attribution License, which permits unrestricted use, distribution, and reproduction in any medium, provided the original author and source are credited.

The applicable elements influencing Rheumatoid arthritis-

- Psychosocial factor
- Smoking
- Genetic factor
- Human microbiome

a. **Psychological factor-** The outcomes of numerous research have proven that a few character trends make someone vulnerable to RA14, 15. There is sufficient proof of disturbed own circle of relatives relationships along with parental dispute, loss of dad and mom because of dying or divorce, stressful/strained marital relationships, and excessive prices of divorce in those patients14. Anxiety and strain are each concerned with inside the incidence and continuation of the ailment. Patients at silent RA degree might also additionally enjoy relapse in the event that they cannot manage strain and anxiety16. Moreover, researches have indicated that despair is a not unusual place character trait in all sufferers with RA. Continuous despair might also additionally have an effect on the hypothalamic-pituitary-adrenal axis, weaken immune resistance, and reason pathologic adjustments in RA14.

b. **Smoking-**Smokers have better ranges of inflammatory proteins known as cytokines of their frame. These play a function with inside the joint and organ harm that incorporates RA. Tobacco smoke reasons your frame to launch all styles of cytokines related to infection in RA. Smoking might also reason your frame to make anti-CCP antibodies.

c. **Genetic issue**

The maximum considerable genetic danger elements for rheumatoid arthritis are versions in human leukocyte antigen (HLA) genes, particularly the HLA-DRB1 gene. The proteins made from HLA genes assist the immune device distinguish the frame's personal proteins from proteins made via way of means of overseas invaders (which includes viruses and bacteria). [5]

d. **Human microbiome**

The switch from a symbiotic to a dysbiotic microbiome is the contributing danger issue for the improvement of rheumatoid arthritis (Figure 1-3) as it's far characterized via way of means of the acute increase of the microbes and absence of bacteria/organisms. The final results of that are responsible for deviations in innate and adaptive immunity [6].

Diagnosis

Rheumatoid arthritis may be tough to diagnose in its early levels



Figure 1: Arthritis Symptoms.

A joint affected by rheumatoid arthritis

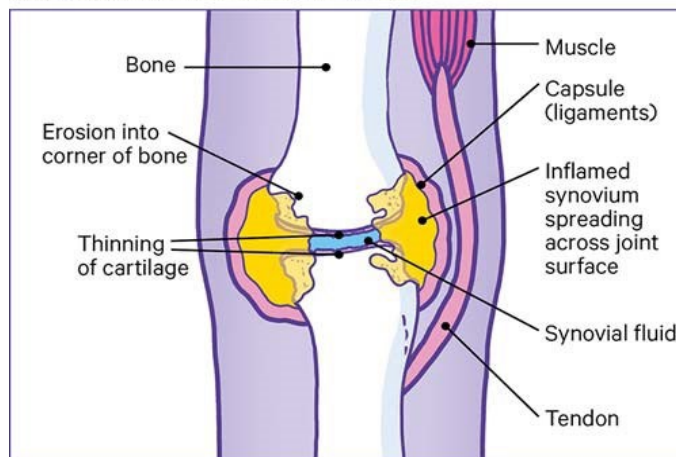


Figure 2: Joint affected by Arthritis.

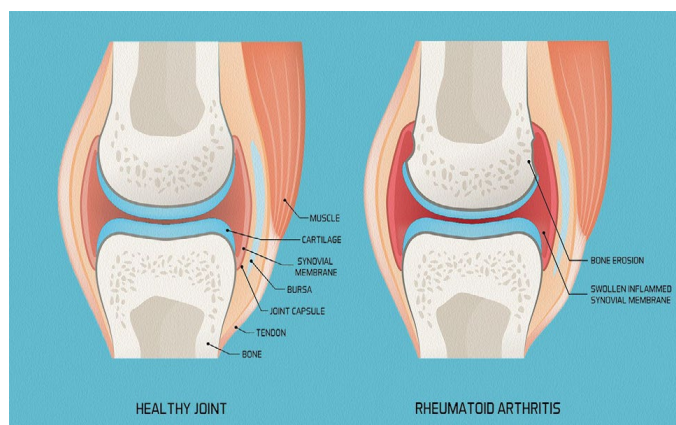


Figure 3: Healthy Joint VS Rheumatoid Arthritis joint.

due to the fact the early symptoms and symptoms and signs and symptoms mimic the ones of many different diseases. There isn't any one blood take a look at or bodily locating to verify the diagnosis.

- a. **Blood test-** People with rheumatoid arthritis regularly have an increased erythrocyte sedimentation price (ESR, additionally called sed price) or C-reactive protein (CRP) level, which might also additionally suggest the presence of an inflammatory method with inside the frame. Other not unusual place blood tests search for rheumatoid issue and anti-cyclic citrullinated peptide (anti-CCP) antibodies.
- b. Initial tests of the laboratory encompass differential rheumatoid issue and sedimentation price of the erythrocytes or proteins which can be C reactive in nature.
- c. Occasionally aspiration of the joint can be required (in case of monoarticular displays to conquer infectious or crystal-triggered arthritis).
- d. Renal and hepatic baseline feature tests (for the selection of medicines to be made [6]
- e. Imaging tests health practitioner might also additionally advise X-rays to help in the development of rheumatoid arthritis to your joints over time. MRI and ultrasound exams can assist your health practitioner choose the severity of the disorder to your frame.

Treatment

a. **NSAIDs** Reduce ache with inside the joints and swelling (the disorder route isn't always altered). They inhibit the synthesis of prostaglandin.

b. Disease modifying antirheumatic drugs

They may be used with inside the early degree of disorder to save you its proliferation. Methotrexate is suggested because the first line remedy in sufferers with lively RA, except contraindicated or now no longer tolerated. Leflunomide (Arava) can be used as an opportunity to methotrexate, despite the fact that gastrointestinal unfavorable outcomes are greater not unusual place. Sulfasalazine (Azulfidine) or hydroxychloroquine (Plaquenil) is suggested as monotherapy in sufferers with low disease activity or without terrible prognostic features (e.g., seronegative, nonerosive RA).

c. Steroids

Oral steroids for RA. Oral steroids are available in pill, capsule, or liquid form. They assist lessen the infection degrees to your frame that make your joints swollen, stiff, and painful. They additionally assist alter your autoimmune gadget to suppress flare-ups. The maximum normally used corticosteroids are prednisolone. Prednisone stimulates the glucocorticoid receptors with inside the cells, which reasons suppression of those dangerous cytokines.

d. Common kinds of steroids used for RA include:

- Prednisone (Deltasone, Sterapred, Liquid Pred)
- Hydrocortisone (Cortef, A-Hydrocort)
- Prednisolone
- Dexamethasone (Dexpak, Taperpak, Decadron, Hexadrol)
- Methylprednisolone (Depo-Medrol, Medrol, Methacort, Depopred, Predacorten)
- Triamcinolone
- Dexamethasone (Decadron)
- Betamethasone

e. **Osteoarthritis**-Osteoarthritis is a multifactorial system wherein mechanical elements have a vital position and is characterized via way of means of modifications in shape and feature of the complete joint. There is no cure, and modern-day healing techniques are ordinarily aimed toward lowering pain. Reasons sluggish lack of articular cartilage.

f. Symptoms

- pain
- Stiffness
- Lack of flexibility
- Tenderness
- Grating sensation
- Bone spurs and swelling

g. Causes

Osteoarthritis takes place whilst the cartilage that cushions the ends of bones to your joints progressively deteriorates. Cartilage is a firm, slippery tissue that allows almost frictionless joint motion. Eventually,

if the cartilage wears down completely, bone will rub on bone. Osteoarthritis has frequently been called a put on and tears disease. But except the breakdown of cartilage, osteoarthritis impacts the whole joint. It reasons modifications with inside the bone and deterioration of the connective tissues that keep the joint collectively and connect muscle to bone. It additionally reasons infection of the joint lining.

Treatment

a. **Analgesics**- Paracetamol is used first line as much as a dose of one g 4 instances a day. It is secure and properly tolerated, especially in older age groups.

b. **Non-steroidal anti-inflammatory drugs**-NSAIDs were discovered to have same efficacy to paracetamol in most patients. All NSAIDs (non-selective and COX 2 selective) are related to capability toxicity, in particular in aged human beings. COX 2 selective inhibitors have additionally been related to an extended hazard for cardiovascular disease. Rofecoxib, a COX 2 selective inhibitor, became lately withdrawn due to such concerns. In human beings with an extended gastrointestinal risk, nonselective NSAIDs plus a gastro protective agent or a selective COX 2 inhibitor have to be used.

c. **Intra-articular steroids** -In patients who present with acute exacerbations of pain and signs of local irritation with joint effusion, evaluation of synovial fluid is warranted to search for gout or pseudo gout crystals and proof of an inflammatory arthritis, inclusive of rheumatoid arthritis. When now no longer in any other case contraindicated, intra-articular corticosteroids are of quick time period benefit (one week) for pain and function.

d. **Polyarticular arthritis**- Polyarthritis is present when four or greater joints with inside the frame end up painful and inflamed. The situation is likewise called polyarthralgia, which way "many joint pains."

e. Symptoms include

- Pain
- Stiffness
- Swelling or redness with inside the affected area
- A rash
- A tiredness or a loss of energy
- A excessive temperature of 100.4 °F (38 °C) or above
- Sweating
- Loss of appetite
- Sudden weight loss

f. Causes

Polyarthritis can arise because the end results of genetic factors. Some humans certainly have disorder-destroying proteins of their bodies known as antibodies that make it less difficult for the situation to thrive. Certain triggers also can motive polyarthritis while the body has an infection that weakens the immune system. Polyarthritis may be both seropositive and seronegative:

- **Seropositive:** This way the character has antibodies of their blood that can assault their frame as opposed to infections, consisting of micro organism or viruses, so they'll be much more likely to increase polyarthritis.

- **Seronegative:** This prognosis suggests that those precise antibodies aren't found in someone's blood.

g. **Gouty arthritis-**Gout is a systemic disorder that outcomes from the deposition of monosodium urate crystals (MSU) in tissues. Gout typically take place with inside the putting of the metabolic syndrome. Its thing functions are hypertension, obesity, dyslipidaemia, insulin resistance or kind 2 diabetes, and renal and cardiovascular disorder. A frame mass index ≥ 35 is related to a threefold improved risk of gout. Whether the function of those situations is causal, consequential or an epiphenomenon is but to be determined.

h. Symptoms

- Tender joint,
- Heat with inside the joint,
- Joint redness and swelling

Treatment-

- **NSAIDS-** Non-steroidal anti inflammatory drugs- Indomethacin 50mg 3 times per day

- **Colchine-** 1.2mg initially, then 0.6 mg one hour later, then 0.6 to 1.2 mg per day

- **Corticosteroids-** oral, intramuscular or intra articular routes, variable dosing (e.g. prednisolone, 40mg for 4 days, then 20 mg for 4 days, then 10mg for 4 days).

a. **Lupus arthritis-** This form of SLE is characterized through pain and irritation of the joints with feeling of tenderness and heat at the affected areas. Patients with lupus arthritis revel in morning stiffness all around the body. Pressure and swelling may be annoyed through fluid accumulated with inside the joints. Systemic lupus erythematosus (SLE) is an autoimmune sickness that impacts the pores and skin and musculoskeletal, renal, neuropsychiatric, hematologic, cardiovascular, pulmonary, and reproductive systems. Its route is commonly recurrent, with intervals of relative remission observed through flares. SLE may be deadly and extensively will increase the threat of cardiovascular sickness. SLE is identified in about 20 to a hundred and fifty people in keeping with 100,000 and is normally visible in girls of baby bearing age; however, it is able to have an effect on male or lady sufferers at any age. 4–6 SLE is extra typically determined in African-Americans, Asians, Hispanics, and Native Americans.

b. **Psoriatic arthritis-** Psoriasis is a relapsing inflammatory pores and skin disorder that happens in 1–3% of the world's population. In Poland, the superiority of psoriasis is expected at 2% of the overall population. Psoriatic arthritis (PsA) is one of the important complications related to psoriasis.

c. Causes

Psoriatic arthritis happens when your body's immune system starts to attack healthy cells and tissue. The abnormal immune reaction reasons inflammation to your joints in addition to overproduction of pores and skin cells.

d. Psoriatic arthritis medication

Medical remedy regimens consist of the usage of nonsteroidal anti inflammatory drugs (NSAIDs) and sickness-enhancing antirheumatic drugs (DMARDs).

- **Nonsteroidal anti inflammatory drugs (NSAIDs)** - Initial remedy consists of NSAIDs for joint sickness and topical healing

procedures for the pores and skin. In many patients, this technique is enough to manipulate sickness manifestations, even though a few people have a worsening of psoriasis with NSAIDs. In those patients, a drug belonging to a extraordinary family of NSAIDs have to be used. For human beings who've morning stiffness, the optimal time for taking an NSAID can be after the nighttime meal and once more upon awakening. Taking NSAIDs with meals can lessen belly discomfort. Any NSAID can harm the mucous layer and purpose ulcers and gastrointestinal bleeding whilst taken for lengthy periods. Cyclooxygenase (COX)-2 selective inhibitors are related to a decrease incidence of gastric ulcer formation. Other facet results might also additionally consist of coronary heart problems, and liver and kidney damage. Over-the-counter NSAIDs consist of ibuprofen (Advil, Motrin IB, others) and naproxen sodium (Aleve). Stronger NSAIDs are to be had through prescription.

- **Indomethacin (Indocin)**

Indomethacin is idea to be the only NSAID for the treatment of ankylosing spondylitis, even though no medical proof helps this claim. It is used for comfort of mild to slight ache; it inhibits inflammatory reactions and ache via way of means of lowering the interest of cyclooxygenase (COX), which ends up in a lower of prostaglandin synthesis.

- **Ibuprofen (Ibu-tab 200, Motrin IB, Advil, NeoProfen)**

Ibuprofen is used for relief of mild to moderate ache; it inhibits inflammatory reactions and pain via way of means of lowering the interest of cyclooxygenase (COX), which ends up in a lower of prostaglandin synthesis. Naproxen (Naprosyn, Naprelan, Aleve, Anaprox) Naproxen is used for relief of mild to moderate ache; it inhibits inflammatory reactions and ache via way of means of lowering the interest of COX, which ends up in a lower of prostaglandin synthesis.

- **Diclofenac (Zorvolex, Cambia)**

Diclofenac inhibits prostaglandin synthesis via way of means of lowering COX interest, which, in turn, decreases formation of prostaglandin precursors.

- **Immunosuppressants**

Immunosuppressants inhibit key elements with inside the immune system which can be responsible for inflammatory responses. These medicines act to tame your immune system, that's out of manipulate in psoriatic arthritis.

- **Methotrexate (Trexall, Otrexup, Rasuvo)**

A randomized, 6-month examine via way of means of confirmed that the early use of methotrexate in sufferers with early psoriatic arthritis markedly stepped forward tender and swollen joints and/or entheses. However, no considerable distinction changed into observed after three months of remedy with NSAIDs or methotrexate. These outcomes recommend that different healing procedures able to enhancing the early route of the sickness should be used. Patients receiving long-time period methotrexate remedy with excessive cumulative doses can be monitored the use of serial liver characteristic tests (LFTs). Liver biopsy ought to be taken into consideration if LFT values are consistently increased. Pro-collagen three N-terminal peptide (PIIINP) is an trade test, even though reported that PIIINP regularly confirmed increased values no matter ordinary liver biopsy outcomes

- **Cyclosporine (Sandimmune, Neoral, Gengraf)**

Cyclosporine is a cyclic polypeptide that suppresses a few humoral immunity and, to a extra extent, cell-mediated immune reactions.

- **Aminosalicyclic acid derivatives**

5-Aminosalicyclic acid derivatives inhibit prostaglandin synthesis and decrease the Sulfasalazine (Azulfidine, Azulfidine EN-tabs) Sulfasalazine has been shown to lessen the inflammatory signs and symptoms of psoriatic arthritis.

References

1. Zhou SF, Zhou ZW, Li CG, Chen X, Yu X, et al. (2007) Identification of drugs that interact with herbs in drug development. *Drug discovery today* 12:664-673.
2. Li CG, Yang L, Zhou SF (2007) Interactions between Chinese herbal medicines and drugs. *Australian journal of acupuncture and Chinese medicine* 2:17-24.
3. Aldhafer ZA (2013) Antimicrobial activity of different types of mouthwashes against *Streptococcus mutans*, *Staphylococcus aureus* and *Candida albicans* (In vitro study). *vitro study*. *Bagh Coll Den* 25:185-91.
4. Ritam SN, Pratima G, Abhijit NG, Sujeet VK (2014) A randomized clinical trial to evaluate and compare the efficacy boftriphala mouthwash with 0.2% chlorhexidine in hospitalized patients with periodontal diseases.
5. Menezes SM, Cordeiro LN, Viana GS (2006) Punicagranatum(pomegranate) extracts is active against dental plaque. *J Herb Pharmacother* 6:920:79-92.
6. Narhi TO, Tenovuo J, Ainamo A, Vilja P (1994) Antimicrobial factors, sialic acid, and protein concentration in whole saliva of the elderly. *Scand J Dent Res* 102: 120-125