

A Rare Case of Herniated Renal Cyst Through Grynfeltt's Triangle

Antonio Pesce* and Stefano Puleo

Department of Medical and Surgical Sciences and Advanced Technologies "G.F. Ingrassia", University of Catania, Via S. Sofia 84, 95123 Catania, Italy

*Corresponding author: Antonio Pesce, MD, Address: Via Taranto n° 14 Catania 95125 – Catania, Italy, Tel: +39 3286680943; Fax: +39-95-3782912; E-mail: nino.fish@hotmail.it

Received date: May 23, 2015, Accepted date: June 19, 2015, Published date: June 31, 2015

Copyright: © 2015 Pesce A, et al. This is an open-access article distributed under the terms of the Creative Commons Attribution License, which permits unrestricted use, distribution, and reproduction in any medium, provided the original author and source are credited.

Clinical Image

Lumbar hernias represent a rare entity among the abdominal wall defects. They are rare defects involving two weak areas of the postero-lateral abdominal wall: the superior lumbar triangle of Grynfeltt-Lesshaft, which is the most common site, and the inferior lumbar triangle of Petit. Anatomically Grynfeltt's triangle is bounded: above by the twelfth rib, medially by the sacrospinalis muscle, laterally by the posterior border of the internal oblique muscle. This rare hernia can be classified as congenital (approximately 20%), generally associated with other malformations, or acquired (around 80%), presenting in adults spontaneously or secondary to trauma or surgical incisions. The hernial sac content is generally characterized by retroperitoneal fat. We present a case of a 80 years old man who presented right lower back pain associated with a palpable mass for 5 years. The past medical history revealed a not well defined surgical procedure for a right renal trauma. The diagnosis of incisional lumbar hernia was made by physical examination (Figure 1). Radiological investigations such as abdominal ultrasonography and CT scan were performed in order to confirm the clinical suspicion. CT scan showed a herniated renal cyst of 9 cm diameter through right superior lumbar triangle (Figure 2). The patient underwent a small lumbotomy and a polypropylene mesh was placed.



Figure 2: CT scan shown a large herniated renal cyst through right superior lumbar triangle.

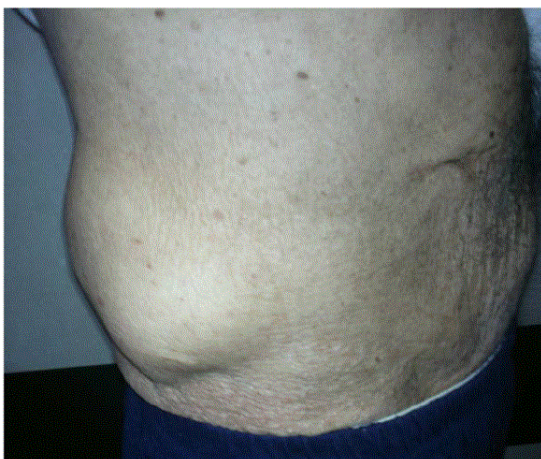


Figure 1: Physical examination shows a rare Grynfeltt's hernia.