

## Pneumomediastinum

Jose Ramon Leal Lomeli\*

Regional Hospital Dr. Valentin Gomez Farias, ISSSTE, Mexico



Image 1: X-ray AP view: Subcutaneous emphysema.

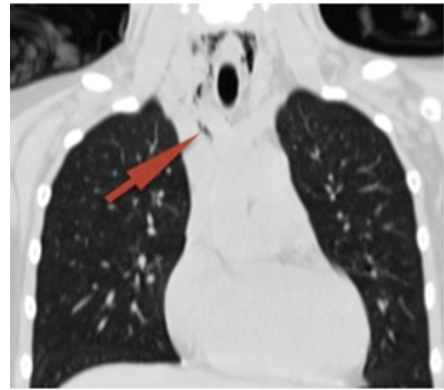


Image 4: CT coronal: Pneumomediastinum, surrounding the esophagus, trachea and the aorta in its distal portion (Hamman sign).



Image 2: Lateral neck: Gauge reduction level larynx.

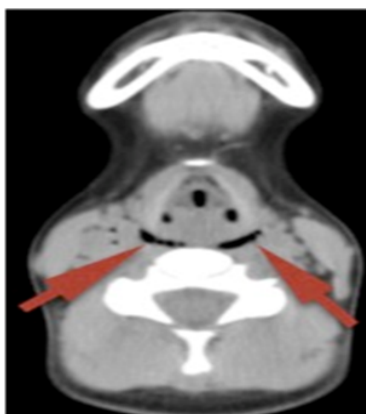


Image 3: CT coronal: Pneumomediastinum in thyroid cartilage and bronchi.

\*Corresponding author: Jose Ramon Leal Lomeli, Regional Hospital Dr. Valentin Gomez Farias, ISSSTE, Mexico, USA, Tel: 52333360650; E-mail: [jrlkobe@icloud.com](mailto:jrlkobe@icloud.com)

Received July 29, 2015; Accepted July 31, 2015; Published July 31, 2015

Citation: Lomeli JRL (2015) Pneumomediastinum. Otolaryngology 5: i001. doi:10.4172/2161-119X.1000i001

Copyright: © 2015 Lomeli JRL. This is an open-access article distributed under the terms of the Creative Commons Attribution License, which permits unrestricted use, distribution, and reproduction in any medium, provided the original author and source are credited.