

Potential Impact of Climate Change on Lake Malawi Chambo (*Oreochromis* spp.) Fishery

Makwinja R^{1*} and M'balaka M²

¹Department of Physics and Biochemical Sciences, The Polytechnic, University of Malawi, Private Bag 303, Blantyre 3, Malawi

²Monkey Bay Fisheries Research Station, P. O. Box 27; Monkey Bay, Malawi

Abstract

The study focusing on potential impact of climate change on Chambo (*Oreochromis* spp.) fishery was conducted in the west coast of Lake Malawi, Nkhotakota using 1991 to 2015 univariate time series data of Chambo catch (metric tons), atmospheric temperatures (°C) and annual precipitation (mm). The Chambo catch data were obtained from Monkey Bay Fisheries Research Station of the Malawi Fisheries Department and the data for temperature and annual precipitation was obtained from Meteorological Department. Using regression models, the study revealed a positive strong correlation between the annual precipitation and annual Chambo catch trend. The coefficient of polynomial regression model (R^2) revealed that 74.89% of variation in Chambo annual catch trend was due to annual precipitation (mm). The t-value for temperatures ($t=0.853$) was not significant ($P>0.05$), while that of precipitation ($t=6.418$) was significant ($P<0.05$) suggesting that annual precipitation significantly influenced the annual Chambo catch trend. The study apparently showed that climate change significantly affects the total landed catch of Chambo in Lake Malawi.

Keywords: Climate change; Chambo; Precipitation; Temperature; Lake Malawi

Introduction

Climate change has emerged to be a serious threat in many different parts of the world. In Malawi, serious effects of climate change particularly on water resources have been evidenced by several authors. For instance, Fujihara et al. [1], Matondo [2] and Tate et al. [3] observed serious implication of climate change on water resources in Malawi. Calder concluded that the changes in the rainfall season, pattern and temperature, and changes in the frequency of droughts and floods as well as significant variations in Lake Malawi and river levels are evidence of climate change in Malawi. Harrod indicated that climate change has had a major historical influence on global biodiversity and will continue to impact the structure and function of natural ecosystems, including the provision of natural services such as fisheries. Although no adequate scientific records were kept to provide empirical evidence regarding the negative impact of climate change on lake Malawi fishery, ample evidence suggests that the global mean temperatures which have increased from 0.3°C to 0.6°C in the last century is an indicator of serious threats on the survival of both marine and fresh water fish species [4,5].

Evidently, *Oreochromis* spp. (*Oreochromis karongae*, *Oreochromis lidole* and *Oreochromis squamipinnis*) collectively known as Chambo used to contribute about 75% of the annual native and artisanal catch in Malawi [6]. Presently, this figure has declined significantly. Though, it is reported that the decline is considerably attributed to a number of cross cutting and sector specific factors such as over-fishing, illegal fishing mainly due to weak enforcement of regulations, habitat destruction, violation of closed seasons, catchments damage, violation of protected areas, a serious threat of climate change on the growth and survival of *Oreochromis* spp. cannot be negated mostly in the west coast of Lake Malawi, Nkhotakota district where adverse effects of climate change are very apparent [7]. Therefore, the study was designed to provide new insights on the extent at which climate change significantly affects the overall production of *Oreochromis* spp. in the western part of Lake Malawi while considering its breeding behaviour and habitat preference.

Materials and Methods

Study area

The study was conducted on the western part of Lake Malawi in Nkhotakota district which borders with Nkhata Bay District to the North, Mzimba District to the North West, Kasungu District to the West, Ntchisi District to the South West and Salima District to the South and also shares an international boundary with the Republic of Mozambique to the East (Figure 1). The district is 200 km North West of Lilongwe, the capital city of Malawi and 358 km from Blantyre, the main commercial and financial city and 240 km from Mzuzu city. In terms of fishery, the district has a shoreline distance of approximately 250 km and is coded as stratum 5. The district has a total number of five minor strata from 5.1 through 5.5 and according to 2015 annual frame survey results, 8352 people are directly employed by the fishery [8].

Data collection

The univariate time series data of total commercial *Oreochromis* spp. fish catch from western part of Lake Malawi was used. Catch data from 1991 to 2015 was obtained Monkey Bay Fisheries Research Unit of the Malawi Fisheries Department. The catch assessment survey (CAS) is designed by the Fisheries research section to collect data on the amount of fish caught in the whole system per month. The technique involves random selection of a series of fishing or landing sites within the established sampling frame. The selection of the sampling sites

*Corresponding author: Makwinja R, Department of Physics and Biochemical Sciences, The Polytechnic, University of Malawi, Private Bag 303, Blantyre 3, Malawi, Tel: +265 1 526 622; E-mail: makwinjarodgers@gmail.com

Received February 08, 2017; Accepted March 23, 2017; Published March 27, 2017

Citation: Makwinja R, M'balaka M (2017) Potential Impact of Climate Change on Lake Malawi Chambo (*Oreochromis* spp.) Fishery. J Ecosyst Ecography 6: 227. doi:10.4172/2157-7625.1000227

Copyright: © 2017 Makwinja R, et al. This is an open-access article distributed under the terms of the Creative Commons Attribution License, which permits unrestricted use, distribution, and reproduction in any medium, provided the original author and source are credited.

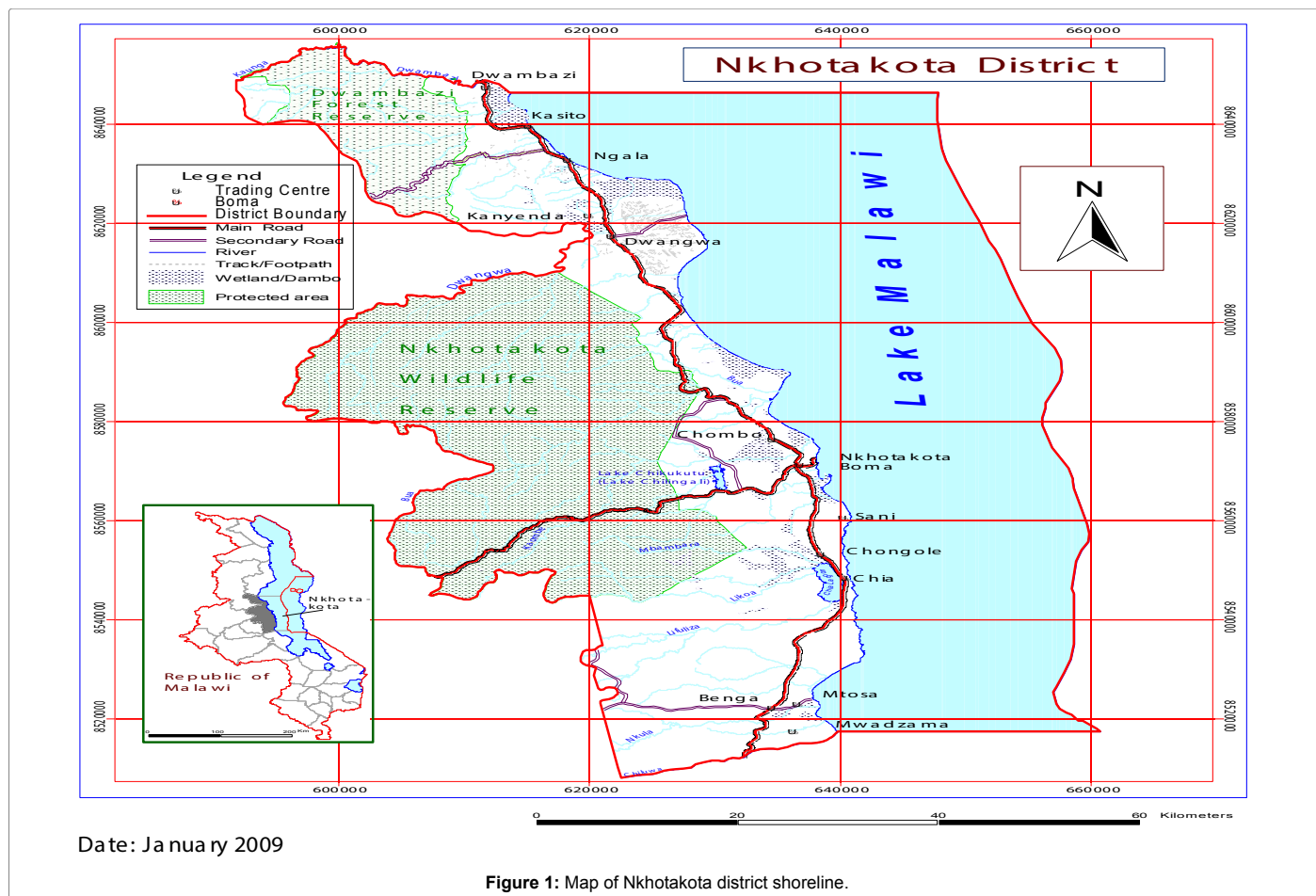


Figure 1: Map of Nkhotakota district shoreline.

takes into Selection also takes into account mobility patterns among the fishermen within the fishing community.

The actual survey at each sampling site takes into account all fishermen or in the case of larger fishing communities sub-sampling of the fishermen may be required. The survey is conducted either by the interview method, whereby the required information is obtained by questioning individual fishermen, or by the actual measurement of the catch of the selected landings. Data on many other characteristics of the fishery are also acquired at the same time. More detailed socio-economic information capable of identifying external constraints on the fishery is also obtained.

On the other hand, the air temperatures and rainfall data for Nkhotakota district from 1991 to 2015 was obtained from Meteorological department, Nkhotakota station Malawi.

Third order polynomial regression analysis

Third order polynomial regression model was used to describe the relationship between the *Oreochromis* spp. catch trend and annual precipitation (mm) and temperatures (°C). The empirical model of third order polynomial regression model is specified as:

$$Y = \alpha + \beta_1 x_1 + \beta_2 x_2^2 + \beta_3 x_3^3 \dots \beta_i x_i^n + \epsilon_i \quad (1)$$

Where Y=dependent variable, α is the intercept and $\beta_1, \beta_2, \beta_3, \dots, \beta_i$ are the regression coefficients of explanatory variables $x_1, x_2, x_3, \dots, x_i$ and ϵ_i is random error or disturbance term.

Multiple linear regression analysis

Multiple regressions were performed in order to determine if the Chambo fishery catch trends are correlated and affected by climate change. The model used was as follows:

$$Y = \alpha + \beta_1 x_1 + \beta_2 x_2 + \beta_3 x_3 + \beta_4 x_4 \dots \beta_i x_i + \epsilon \quad (2)$$

Where Y=dependent variable, α is the intercept and $\beta_1, \beta_2, \beta_3, \dots, \beta_i$ are the regression coefficients of $x_1, x_2, x_3, \dots, x_i$ respectively.

Results

Relationship between temperature (°C) and annual precipitation (mm)

Fluctuation in air temperatures (°C) and precipitation (mm) during the period 1991 to 2015 is shown in Figure 1. There has been stability in average air temperature (around 28°C). The lowest average temperature (26.2°C) was recorded in the year 2015 and the highest (30°C) in the year 2005. It can also be observed in Figure 1 that the rainfall pattern has been greatly fluctuating with the highest being recorded in the year 2004 registering 2302 mm and the lowest (679 mm) being observed in 2015. Generally, the rains had been increasing from 1991 to mid-2000 with some drops in 1998 and also from 2001 to 2003. The peak in 2004 was followed by a general drop in the amount of rainfall until reaching its lowest point of 679 mm in 2015 (Figure 2).

Relationship between temperature (°C), precipitation (mm) and annual Chambo catch trend

The statistical relationship between Chambo catch and interdependent variables of temperature and rainfall is shown in Figure 2. The general trend for Chambo indicates an increase from 1991 to 1996 followed by some kind of stability until early 2000 despite having a very unusual drop in 1998. In 2004, Chambo reported the highest catch of about 2800 metric tons but since then a decline in total landed catch had been noted and the lowest level (173 metric tonnes) being

observed in 2015. It should be noted however that the behaviour of the Chambo trend had been closely followed by the rainfall pattern as both registered peaks in 2004 and recorded lowest levels in 2015 (Figure 3).

Figure 3 shows, a polynomial regression equation $y=1E-07x^3-0.0005x^2+0.9796x+720.1$, $R^2=0.7486$. The model shows that annual catches increased with increase in annual precipitation (mm) (Figure 4).

Multiple regression model

The results from the multiple regression model in Table 1 displayed

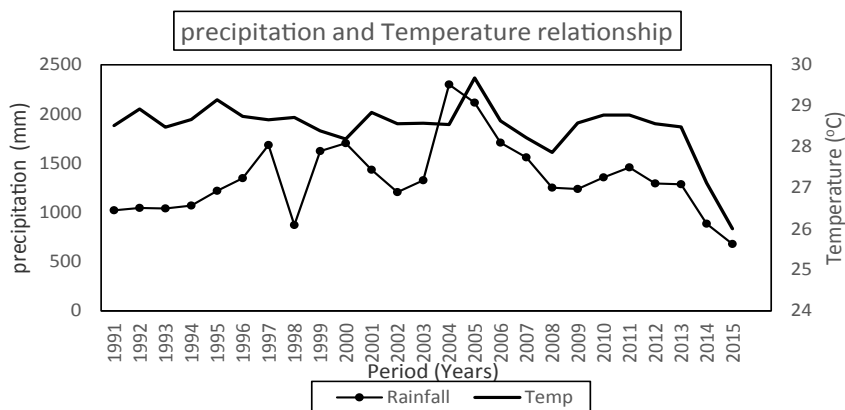


Figure 2: Temperatures (°C) and precipitation (mm) relationship.

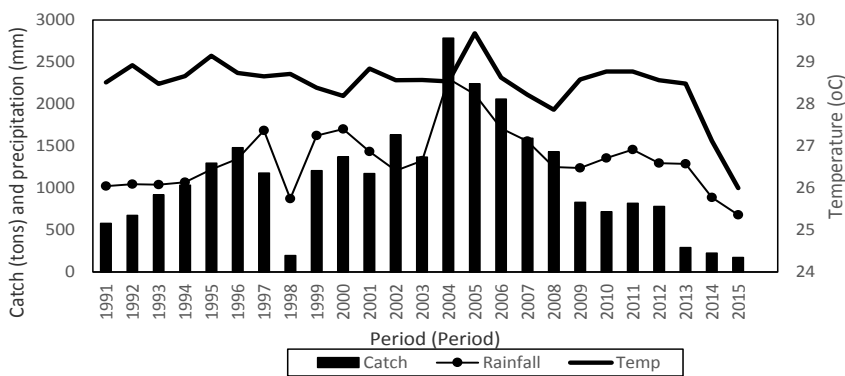


Figure 3: *Oreochromis* spp. catch, temperatures and annual precipitation relationships.

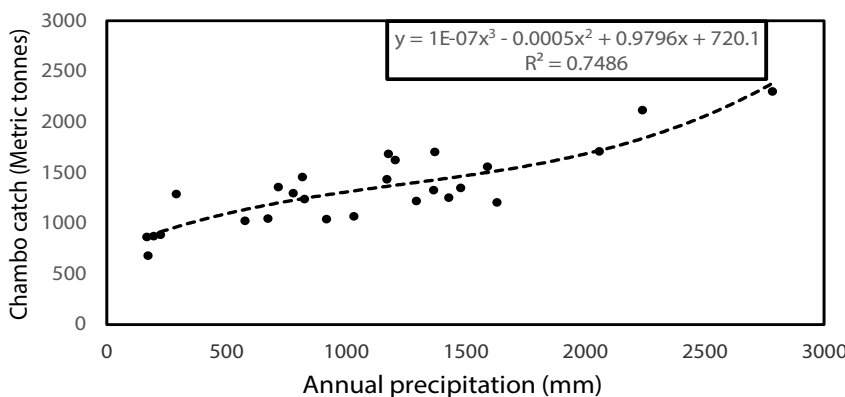


Figure 4: Polynomial regression coefficient of the relationships between annual precipitation and Chambo catch.

a good fit ($R^2=0.73$, $F=30.91$ and $P<0.01$). Similarly, the Pearson product Moment correlation coefficient was 0.85. The T-value for temperatures ($t=0.85$) in Table 2 was not significant ($P<0.01$) (Table 1).

On contrary, the T-value for precipitation ($t=6.42$) was significant ($P<0.01$).

The signs of the beta (β) coefficients for precipitation ($\beta=0.80$) and temperatures ($\beta=0.12$) are shown in Table 2.

Discussion

The study revealed fluctuation in air temperatures ($^{\circ}\text{C}$) and precipitation (mm) during the period 1991 to 2015. This fluctuation has been previously observed by several authors. For instance, Kumbuyo et al. [9] reported a strong inter-annual fluctuation of rainfall, with topography and location playing major roles in the annual rainfall distribution in the selected districts of Malawi. The study further revealed tremendous decrease of annual precipitation followed by prolonged dry spell from 2004 to 2015. Similar observation was made by New et al. [10] who reported a decrease in average precipitation intensity and an increase in dry-spell length from 1961 to 2000 in some parts of Malawi. Additionally, the Intergovernmental Panel on Climate Change report revealed a trend of increasing precipitation amount from 1901 to 2005 from the equator to tropical eastern Africa and a declining trend in Africa south of 20°S latitude.

The study further revealed that Chambo catches over the period were greatly influenced by the rainfall patterns rather than the atmospheric temperature. A polynomial regression model $y=1\text{E-}07x^3-0.0005x^2+0.9796x+720.1$, $R^2=0.7486$ showed that total annual catches increased with increase in annual precipitation (mm). The coefficient of polynomial regression model (R^2) revealed that 74.89% of variation in *Oreochromis* spp. catches was due to amount of annual precipitation (mm). Again, Pearson product moment correlation coefficient was observed to be 0.85 which suggested strong correlation between the dependant variable (Chambo catch) and climate change components (temperatures and precipitation).

Although, the T-value for temperatures ($T=0.853$) was not significant ($P>0.05$), while that of rainfall ($T=6.418$) was significant ($P<0.05$), the signs of the beta (β) coefficients for rainfall ($\beta=0.797$) and temperatures ($\beta=0.106$) were both positive suggesting that it was in line with theoretical expectations that populations of fish and other aquatic organisms are greatly influenced by meteorological

factors. Furthermore, McCarthy et al. observed that the interaction of precipitation with temperatures and evapotranspiration considerably affects the behaviour of surface water hydrology, such as mean runoff amounts, drought and ultimately, lake levels and river flows which consequently affected the breeding, survival and growth of Chambo species leading into tremendous decline in Chambo catches.

The results are further in line with the finding of Bell et al. [11], who reported a positive correlation between Chambo catch and Lake Malawi water level which primarily originated from rainfall and higher wind velocities. He further attributed high production with high mean rainfall to the flooding pulse concept where the flooding of the lakes and rivers brings terrestrial nutrients that boost primary productivity and make more area accessible for spawning and nursery grounds. Despite rainfall having a significant contribution toward total Chambo catch, Eccles, Kolding and Van Zwieten, (in press) attributed the overall productivity of lakes like Lake Malawi to seasonal upwelling conditions but were quick to say that near shore dependent species like Chambo are linked with both nutrient upwelling and variations in inundation of floodplains and marshes [12].

Tweddle and Magasa however, reported that a decline in Lake Malawi water level was followed by an increase in yields three years later and this can be appreciated in Figure 2 where low rains in 2001 led to the highest Chambo catch in 2004 [13]. The reasoning behind this according Tweddle and Magasa was that these conditions are associated with windier conditions which enhanced nutrient upwelling and provided more food to juvenile Chambo.

Conclusion

The study provides evidence that climate change has a significant adverse impact on the total landings of *Oreochromis* spp. in Lake Malawi. Therefore, there is a need to take an immediate climate change mitigation measures to reduce the impact, otherwise the species may experience serious extinction in the near future.

References

1. Fujihara Y, Tanaka K, Watanabe T, Nagano T (2008) Assessing the impacts of climate change on the water resources of the Seyhan River Basin in Turkey: Use of dynamically downscaled data for hydrologic simulations. Journal of Hydrology 353: 33-48.
2. Matondo JP (2004) Evaluation of the impact of climate change on hydrology and water resources in Swaziland. Part II Physics and Chemistry of the Earth 29: 1193-1202.
3. Tate E, Sutcliffe J, Conway D (2004) Water balance of Lake Victoria: update to 2000 and climate change modelling to 2100. Hydrological Sciences-Journal 49: 574.
4. Houghton JT (2001) Climate Change 2001. In IPCC, The Scientific Basis. Contribution of Working Group I to the Third Assessment Report of the Intergovernmental Panel on Climate Change. Cambridge, United Kingdom: Cambridge University Press.
5. Roessig J, Woodley C, Cech J, Hansen L (2004) Effects of global climate change on marine and estuarine fishes and fisheries. Reviews in Fish Biology and Fisheries 14: 251-275.
6. Palsson OB, Banda M (1999) A Review of biology, fisheries and population dynamics of Chambo (*Oreochromis* spp., Cichlidae) in Lakes Malawi and Malombe. Lilongwe: Fisheries Bulletin No. 38, Fisheries Department.
7. Banda M, Kanyerere GZ, Rusuwa BB (2003) The status of the Chambo in Malawi: Fisheries and biology. Monkey Bay, Malawi: Fisheries Research Unit.
8. Fisheries Research Division (2016) Annual Frame Survey Report of the Small Scale Fisheries. Prepared by the Fisheries Research Division. Lilongwe. Bulletin no XX.

Model	Sum of squares	df	Mean Square	F	Sig
Regression	8E+06	2	4E+06	30.91	0.000*
Residual	3E+06	23	1E+05		
Total	1E+07	25			
R=0.85,					
R. square=0.73					
Adjusted R square=0.705					

*Significant at $P<0.01$.

Table 1: ANOVA analysis of regression.

Model	β	Std. Error	Beta	T. Value	Sig
(Constant)	-147.88	1496.57	0.06	-0.43	0.165 ^{ns}
Annual precipitation (mm)	1.39	0.22	0.8	6.42	0.000*
Temperatures	48.59	56.93	0.11	0.85	0.402 ^{ns}

^{ns}Non-significant, *Significant at $P<0.01$.

Table 2: Coefficients of regression of total Annual catch, Temperatures and precipitation.

-
9. Kumbuyo CP, Yasuda H, Kitamura Y, Shimizu K (2014) Fluctuation of rainfall time series in Malawi: An analysis of selected areas. *Geofizika* 31: 13-28.
 10. New MH (2006) Evidence of trends in daily climate extremes over southern and west Africa. *J Geophys Res* 111: D14102.
 11. Bell R J, Collie JS, Jamu D, Banda M (2012) Changes in the biomass of Chambo in the Southeast arm of Lake Malawi: Stock Assessment of *Oreochromis* species. *Journal of Great Lakes Research* 38: 720-729.
 12. Eccles D (1974) An outline of the physical limnology of Lake Malawi (Lake Nyassa). *Limnol Oceanogr* 19: 730-742.
 13. Tweddle D, Magasa J (1989) Assessment of multispecies cichlid fisheries of the southeast arm of Lake Malawi, Africa. *Int Counc Explor Sea* 45: 209-222.