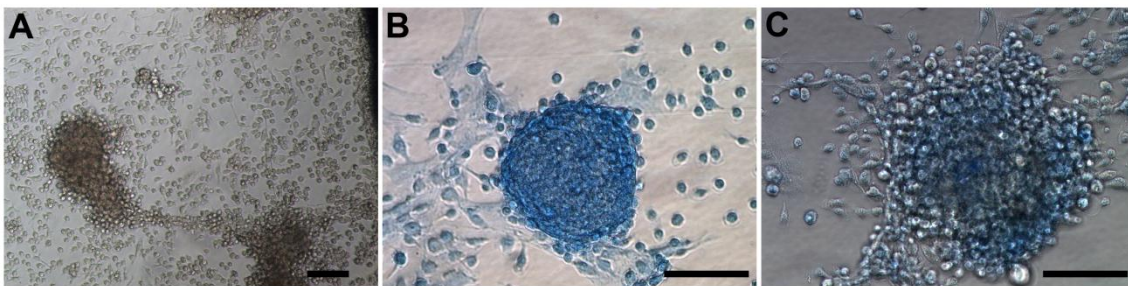


Supplementary Figure 1: Monocytic precursor cells are negative for glycosaminoglycan production prior to chondrogenic induction. Monocytic precursor cells plated before chondrogenic induction for 2 hours in α MEM/1% FBS. Cells were fixed and stained with Alcian Blue. (A-B) Representative images of negative cells. Bar=100 μ m.



Supplementary Figure 2: Harvested articular cartilage cells demonstrate glycosaminoglycan production and cartilaginous nodule formation. Harvested articular cartilage cultured in DMEM/10% FBS/1% PS, supplemented with 2mM L-glutamine, for 2-3 weeks. (A) Unstained articular cartilage nodules after two weeks in culture. (B) Explant culture showing formation of cartilaginous nodule and positive Alcian Blue staining. (C) Digest well demonstrating formation of cartilaginous nodules and positive Alcian Blue staining. Bar=100 μ m. Monocytic precursor derived cells form cartilaginous nodules in serum-containing media supplemented with TGF- β 1.