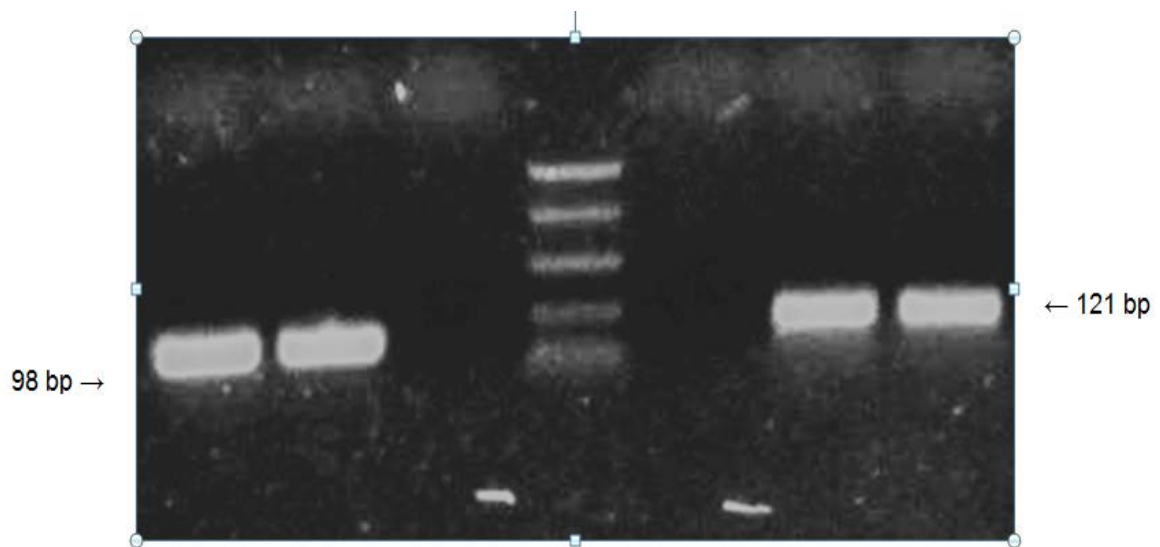
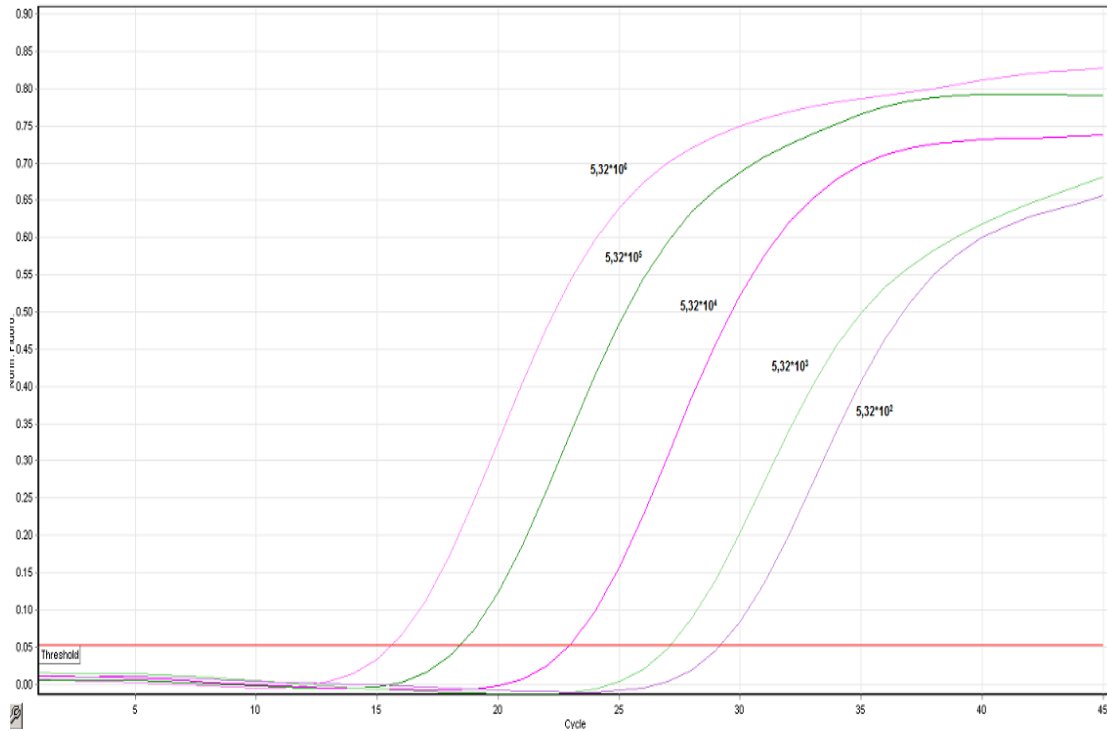


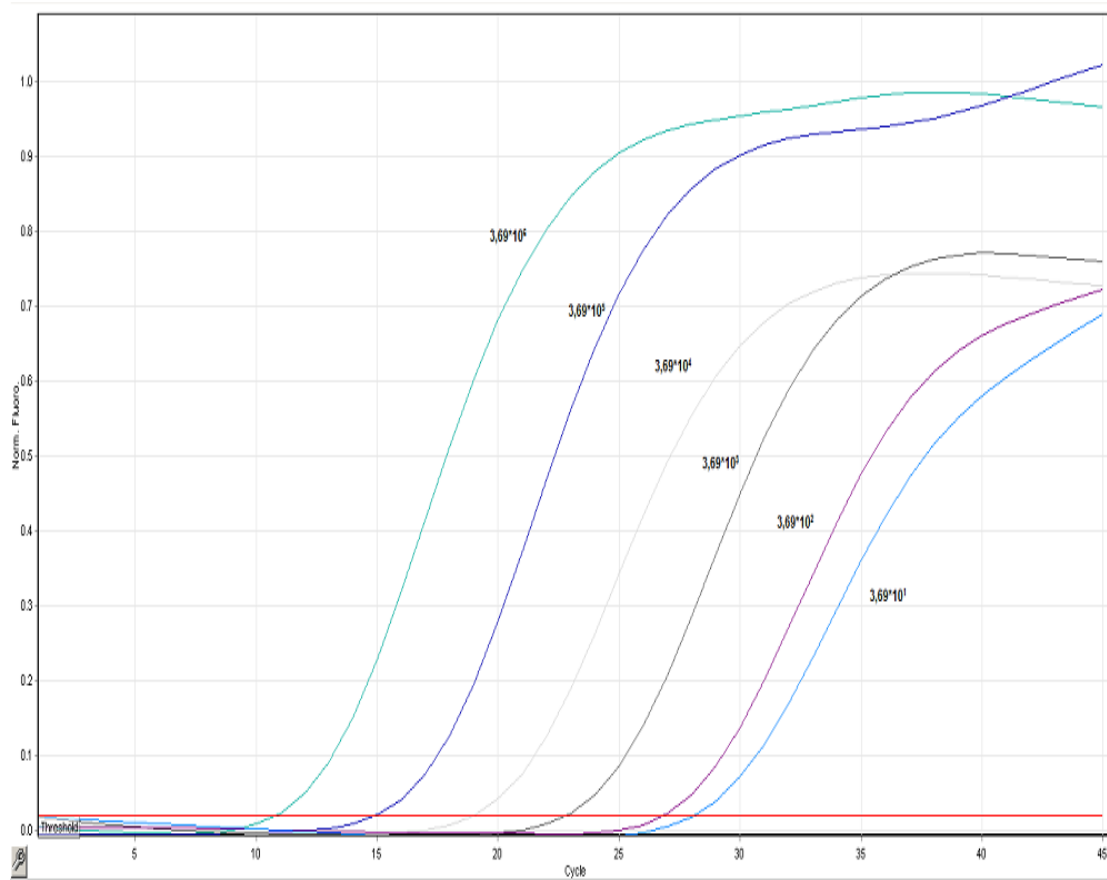
Supplementary Figure 1: Electrophoresis image of a 2% w/v agarose gel of the RASSF1 promoter of PCR products, prior to the Pyro-sequencing analysis (well 1, MW marker, well 2, blank, wells 3-8, tumor samples).



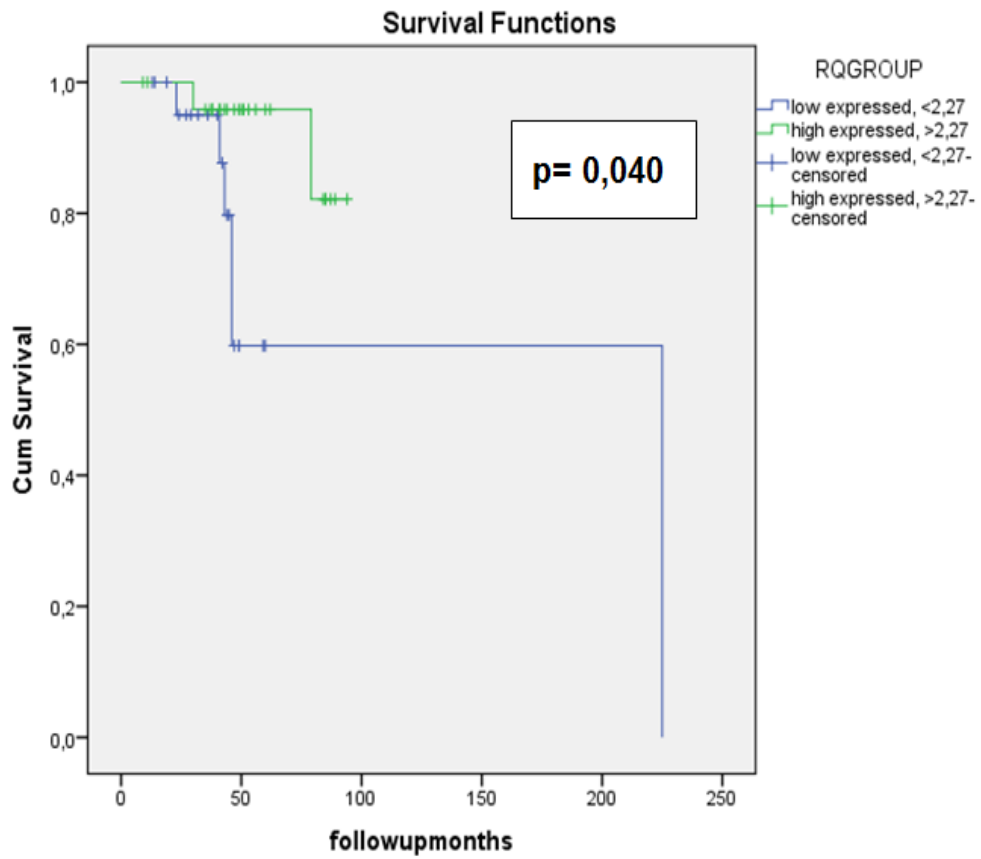
Supplementary Figure 2: Electrophoresis image of a 2% w/v agarose gel of RT-qPCR products for both genes (on a 2 % w/v agarose gel). On the left side of the PCR MW marker (NEB), there are two beta2-microglobulin RT-qPCR products and a blank, while on the right side, there are two *RASSF1* RT-qPCR products and their blank.



Supplementary Figure 3: Standard curve of the RT-qPCR *RASSF1* assay (range of the calibrators 5.32×10^6 - 10^2 copies/ μ L).



Supplementary Figure 4: Standard curve of the RT-qPCR beta2-microglobulin assay (range of the calibrators 3.69×10^6 - 10^1 copies/ μ L).



Supplementary Figure 5: Kaplan-Meier curve for metastasis vs. *RASSF1* mRNA expression.