

Table S1. Genomic DNA concentrations of all the subjects

Sample ID	DNA concentration (ng/ μ L)	
	Blood	Saliva
00001	183.71	61.47
00002	145.51	24.5
00003	154.57	9.86
00004	91.47	29.99
00005	121.84	5.46
00006	105.47	13.22
00007	148.78	19.92
00008	119.59	190.49
00009	167.89	13.57
00010	98.9	12.64
00011	172.19	5.57
00012	241.8	20.3
00013	220.89	159.35
00014	134.51	25.63
00015	181.7	35.18
00016	114.5	8.52
00017	149.1	10.42
00018	397.62	28.41
00019	189.76	96.55
00020	181.88	66.34
00021	127.51	29.04
00022	157.91	22.4
00023	117.67	25.15
00024	131.14	77.53
00025	171.46	23.2
00026	97.88	23.8
00027	252.22	16.18
00028	155.88	11.69
00029	198.87	62.47
00030	157.44	83.28
00031	163.28	62.07
00032	152.27	9.56
00033	133.09	108.29
00034	138.88	30.91
00035	92.7	10.78
00036	137.58	25.09
00037	148.28	10.09
00038	210.98	79.99
00039	138.38	115.39
00040	131.28	36.36
00041	45.25	46.82
00042	107.42	29.09
00043	96.84	51.26
00044	141.78	49.2
00045	216.86	39.6
00046	173.66	45.37
00047	171.95	251.64
00048	166.09	59.77
00049	235.14	36.79
00050	85.63	44.09

00051	188.25	11.64
-------	--------	-------

Genomic DNA concentrations extracted from saliva and blood samples for each subject (ID) are shown.

Table S2. Genomic DNA quality data for all the subjects

Sample ID	Blood DNA Quality			Saliva DNA Quality		
	Smear (+/-)	>23kb band (+/-)	result High/Low	Smear (+/-)	>23kb band (+/-)	result High/Low
00001	-	+	High	+	+	Low
00002	-	+	High	-	+	High
00003	-	+	High	-	+	High
00004	-	+	High	-	+	High
00005	-	+	High	-	+	High
00006	-	+	High	-	+	High
00007	-	+	High	-	+	High
00008	-	+	High	+	+	Low
00009	-	+	High	-	+	High
00010	-	+	High	-	+	High
00011	-	+	High	-	+	High
00012	-	+	High	-	+	High
00013	-	+	High	+	+	Low
00014	-	+	High	-	+	High
00015	-	+	High	-	+	High
00016	-	+	High	-	+	High
00017	-	+	High	-	+	High
00018	-	+	High	-	+	High
00019	-	+	High	-	+	High
00020	-	+	High	-	+	High
00021	-	+	High	-	+	High
00022	-	+	High	-	+	High
00023	-	+	High	-	+	High
00024	-	+	High	-	+	High
00025	-	+	High	-	+	High
00026	-	+	High	-	+	High
00027	-	+	High	-	+	High
00028	-	+	High	-	+	High
00029	-	+	High	-	+	High
00030	-	+	High	+	+	Low
00031	-	+	High	+	+	Low
00032	-	+	High	-	+	High
00033	-	+	High	+	+	Low
00034	-	+	High	-	+	High
00035	-	+	High	-	+	High
00036	-	+	High	-	+	High
00037	-	+	High	-	+	High
00038	-	+	High	+	+	Low
00039	-	+	High	+	+	Low
00040	-	+	High	-	+	High
00041	-	+	High	-	+	High
00042	-	+	High	-	+	High
00043	-	+	High	-	+	High
00044	-	+	High	-	+	High
00045	-	+	High	-	+	High
00046	-	+	High	-	+	High
00047	-	+	High	+	+	Low
00048	-	+	High	-	+	High

00049	-	+	High	-	+	High
00050	-	+	High	-	+	High
00051	-	+	High	-	+	High

The quality standard of extracted genomic DNA is shown. For smear, + and – indicates with and without smear, respectively. For 23-kb band, + and – indicate genomic DNA of >23 kb detected and not detected, respectively. High: high quality; low: low quality.

Table S3. Individual results for genotyping

Sample ID	RFLP		Sanger Sequence					
	Blood genotype	Saliva genotype	Blood E112	Blood E158	Blood genotype	Saliva E112	Saliva E158	Saliva genotype
00001	E3/E4	E3/E4	T/C	C/C	E3/E4	T/C	C/C	E3/E4
00002	E3/E3	E3/E3	T/T	C/C	E3/E3	T/T	C/C	E3/E3
00003	E3/E4	E3/E4	T/C	C/C	E3/E4	T/C	C/C	E3/E4
00004	E3/E4	E3/E4	T/C	C/C	E3/E4	T/C	C/C	E3/E4
00005	E3/E4	E3/E4	T/C	C/C	E3/E4	T/C	C/C	E3/E4
00006	E3/E3	E3/E3	T/T	C/C	E3/E3	T/T	C/C	E3/E3
00007	E2/E3	E2/E3	T/T	C/C	E2/E3	T/T	T/C	E2/E3
00008	E3/E4	E3/E4	T/C	C/C	E3/E4	T/C	C/C	E3/E4
00009	E3/E3	E3/E3	T/T	C/C	E3/E3	T/T	C/C	E3/E3
00010	E3/E3	E3/E3	T/T	C/C	E3/E3	T/T	C/C	E3/E3
00011	E3/E3	E3/E3	T/T	C/C	E3/E3	T/T	C/C	E3/E3
00012	E3/E3	E3/E3	T/T	C/C	E3/E3	T/T	C/C	E3/E3
00013	E3/E3	E3/E3	T/T	C/C	E3/E3	T/T	C/C	E3/E3
00014	E3/E4	E3/E4	T/C	C/C	E3/E4	T/C	C/C	E3/E4
00015	E3/E3	E3/E3	T/T	C/C	E3/E3	T/T	C/C	E3/E3
00016	E3/E3	E3/E3	T/T	C/C	E3/E3	T/T	C/C	E3/E3
00017	E3/E3	E3/E3	T/T	C/C	E3/E3	T/T	C/C	E3/E3
00018	E3/E3	E3/E3	T/T	C/C	E3/E3	T/T	C/C	E3/E3
00019	E3/E3	E3/E3	T/T	C/C	E3/E3	T/T	C/C	E3/E3
00020	E3/E3	E3/E3	T/T	C/C	E3/E3	T/T	C/C	E3/E3
00021	E3/E3	E3/E3	T/T	C/C	E3/E3	T/T	C/C	E3/E3
00022	E3/E3	E3/E3	T/T	C/C	E3/E3	T/T	C/C	E3/E3
00023	E3/E3	E3/E3	T/T	C/C	E3/E3	T/T	C/C	E3/E3
00024	E3/E4	E3/E4	T/C	C/C	E3/E4	T/C	C/C	E3/E4
00025	E3/E3	E3/E3	T/T	C/C	E3/E3	T/T	C/C	E3/E3
00026	E3/E3	E3/E3	T/T	C/C	E3/E3	T/T	C/C	E3/E3
00027	E3/E3	E3/E3	T/T	C/C	E3/E3	T/T	C/C	E3/E3
00028	E3/E4	E3/E4	T/C	C/C	E3/E4	T/C	C/C	E3/E4
00029	E2/E3	E2/E3	T/T	T/C	E2/E3	T/T	T/C	E2/E3
00030	E3/E3	E3/E3	T/T	C/C	E3/E3	T/T	C/C	E3/E3
00031	E3/E3	E3/E3	T/T	C/C	E3/E3	T/T	C/C	E3/E3
00032	E3/E3	E3/E3	T/T	C/C	E3/E3	T/T	C/C	E3/E3
00033	E3/E3	E3/E3	T/T	C/C	E3/E3	T/T	C/C	E3/E3
00034	E3/E3	E3/E3	T/T	C/C	E3/E3	T/T	C/C	E3/E3
00035	E3/E3	E3/E3	T/T	C/C	E3/E3	T/T	C/C	E3/E3
00036	E2/E3	E2/E3	T/T	T/C	E2/E3	T/T	T/C	E2/E3
00037	E3/E3	E3/E3	T/T	C/C	E3/E3	T/T	C/C	E3/E3
00038	E3/E3	E3/E3	T/T	C/C	E3/E3	T/T	C/C	E3/E3
00039	E2/E4	E2/E4	T/C	T/C	E2/E4	T/C	T/C	E2/E4
00040	E3/E3	E3/E3	T/T	C/C	E3/E3	T/T	C/C	E3/E3
00041	E3/E3	E3/E3	T/T	C/C	E3/E3	T/T	C/C	E3/E3
00042	E2/E3	E2/E3	T/T	T/C	E2/E3	T/T	T/C	E2/E3
00043	E3/E4	E3/E4	T/C	C/C	E3/E4	T/C	C/C	E3/E4
00044	E3/E4	E3/E4	T/C	C/C	E3/E4	T/C	C/C	E3/E4
00045	E3/E4	E3/E4	T/C	C/C	E3/E4	T/C	C/C	E3/E4
00046	E3/E3	E3/E3	T/T	C/C	E3/E3	T/T	C/C	E3/E3
00047	E3/E4	E3/E4	T/C	C/C	E3/E4	T/C	C/C	E3/E4

00048	E3/E3	E3/E3	T/T	C/C	E3/E3	T/T	C/C	E3/E3
00049	E3/E3	E3/E3	T/T	C/C	E3/E3	T/T	C/C	E3/E3
00050	E3/E3	E3/E3	T/T	C/C	E3/E3	T/T	C/C	E3/E3
00051	E3/E4	E3/E4	T/C	C/C	E3/E4	T/C	C/C	E3/E4

In Sanger sequencing method, the genotype was determined by combining the alleles of codons 112 and 158. Blood genotype: genotype of ApoE determined from blood samples; saliva genotype: genotype of ApoE determined from saliva samples; blood E112: base pair of codon 112 in blood samples; blood E158: base pair of codon 158 in blood samples; saliva E112: base pair of codon 112 in saliva samples; saliva E158: base pair of codon 158 in saliva samples; T: thymine, C: cytosine.

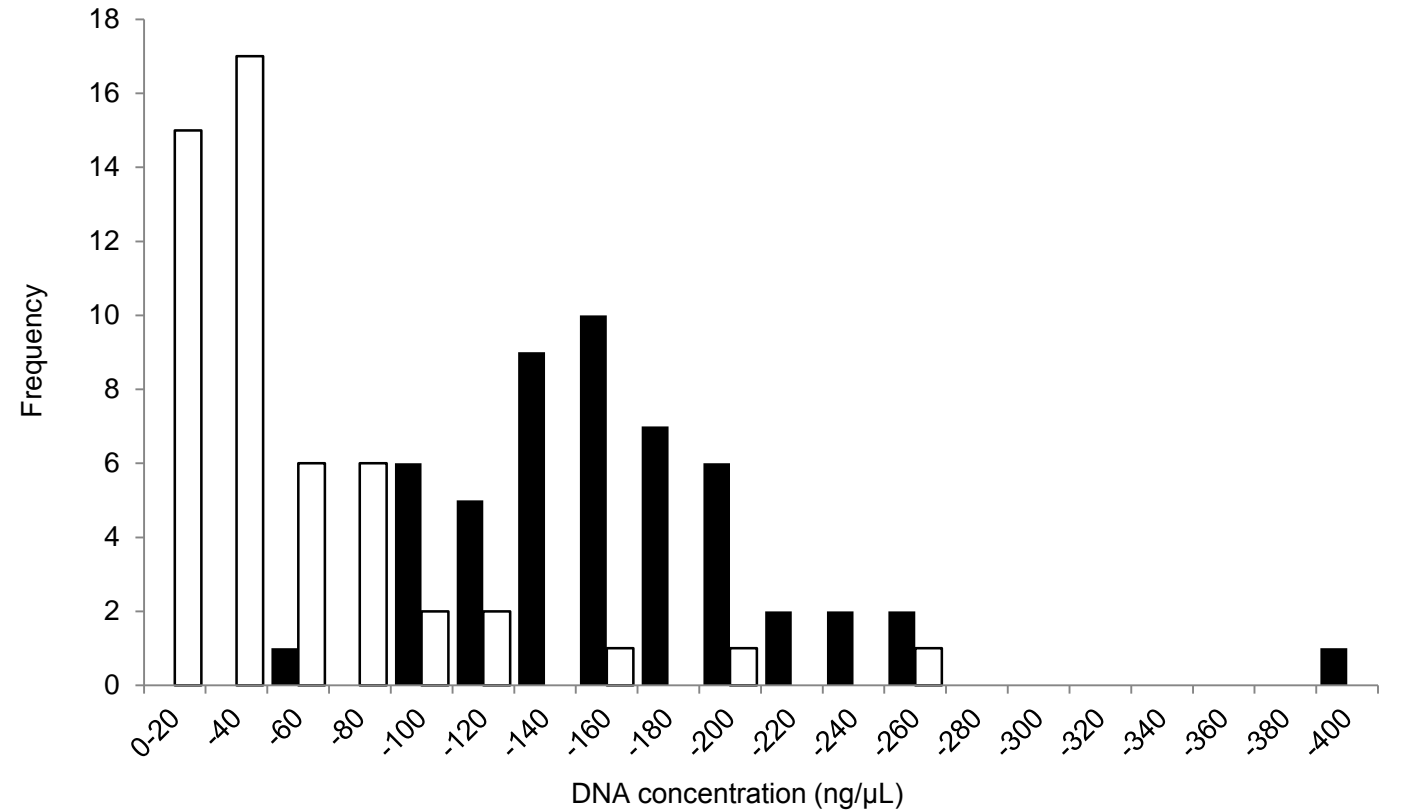
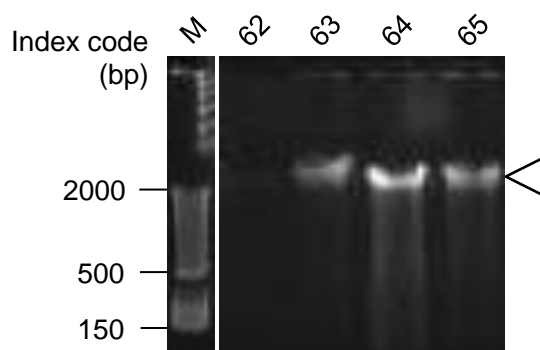
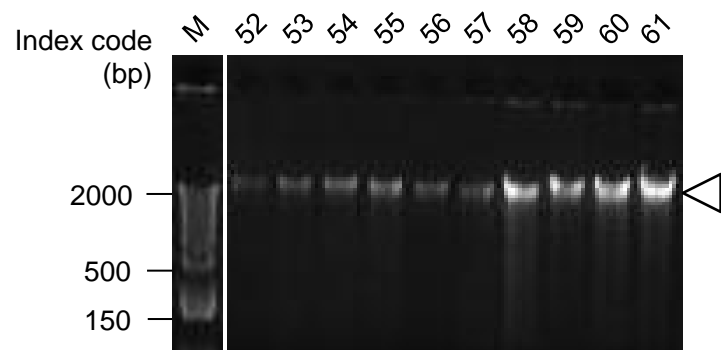
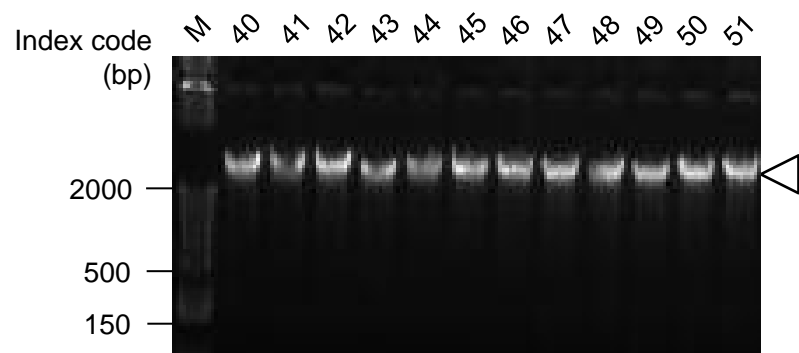
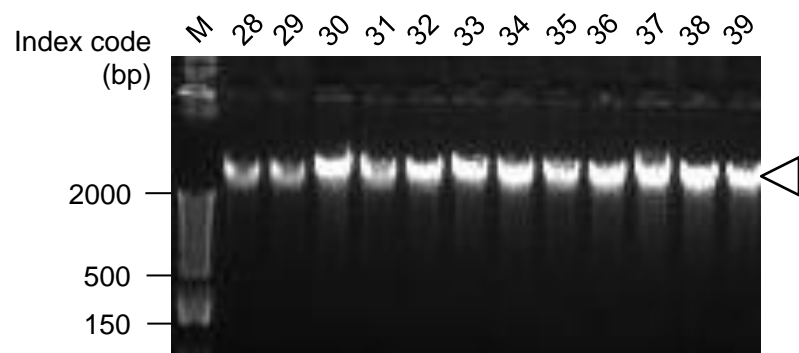
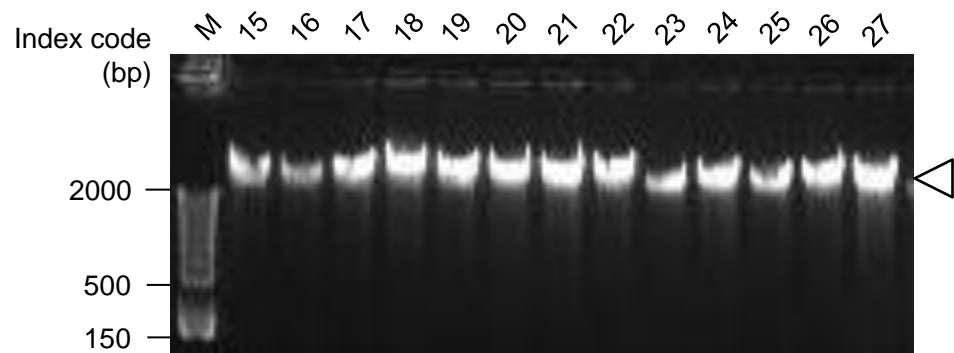
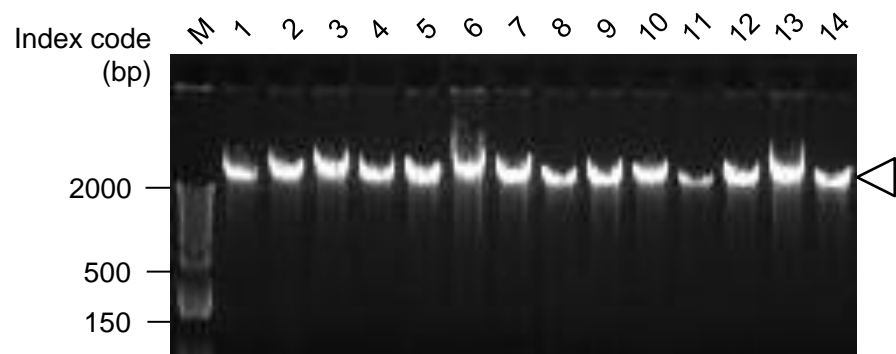
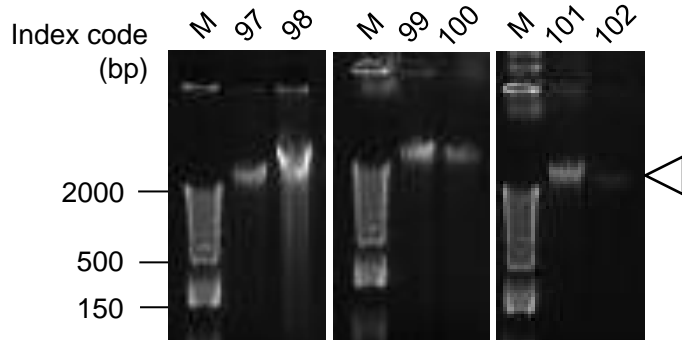
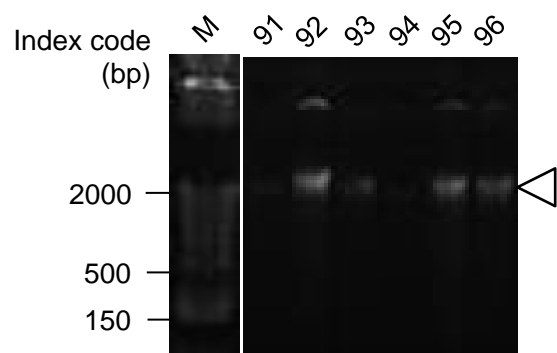
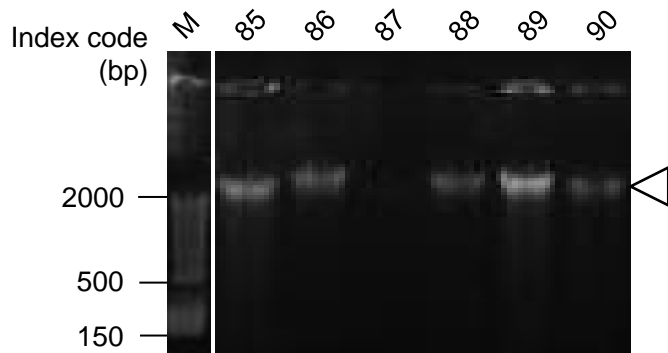
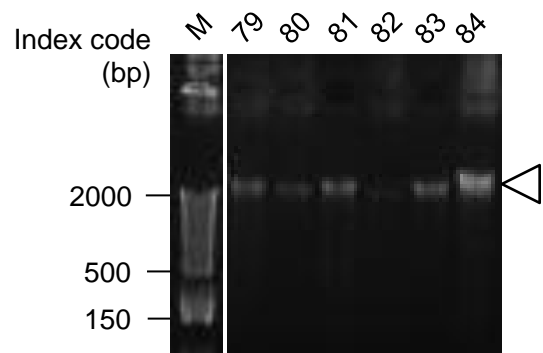
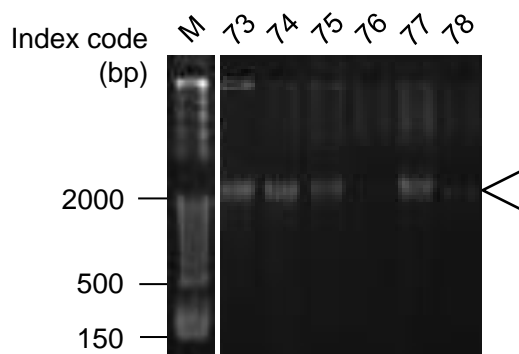
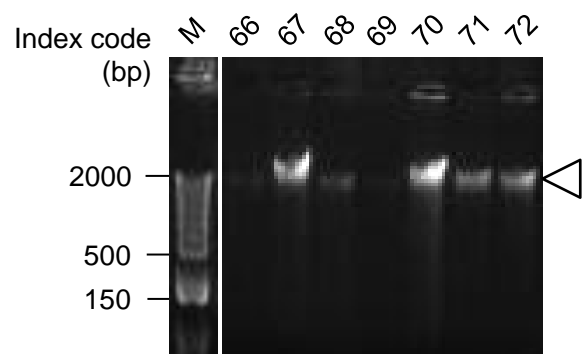


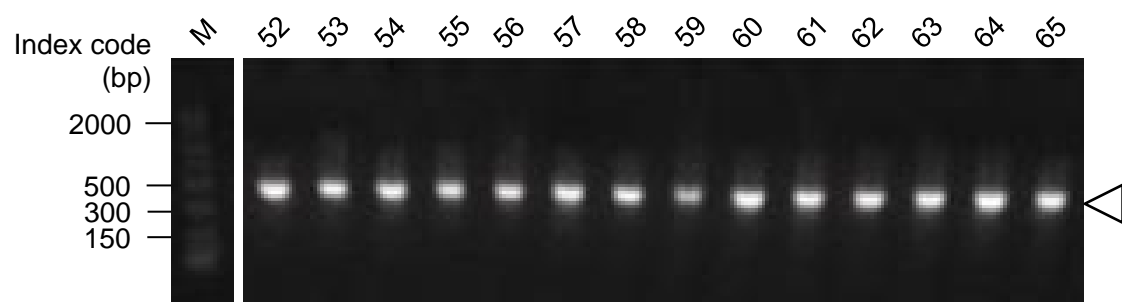
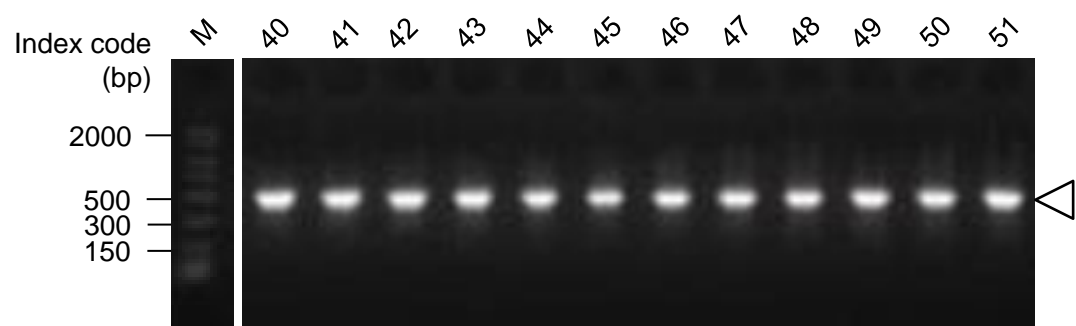
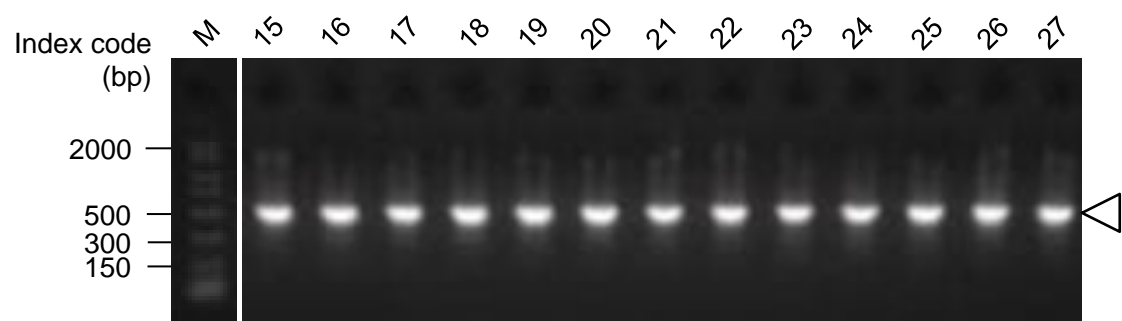
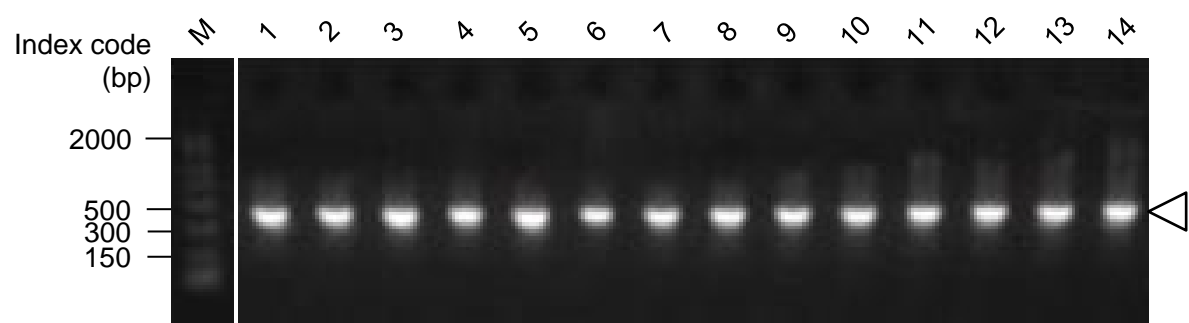
Figure S1. Comparison of concentration distribution between blood and saliva DNA. Distribution chart of the DNA concentration of saliva (n = 51) and blood samples (n = 51) is shown. The horizontal axis indicates concentration (ng/μL) and vertical axis indicates the number of DNA (n). Black bar: distribution of the blood sample concentration; white bar: distribution of the saliva sample concentration.

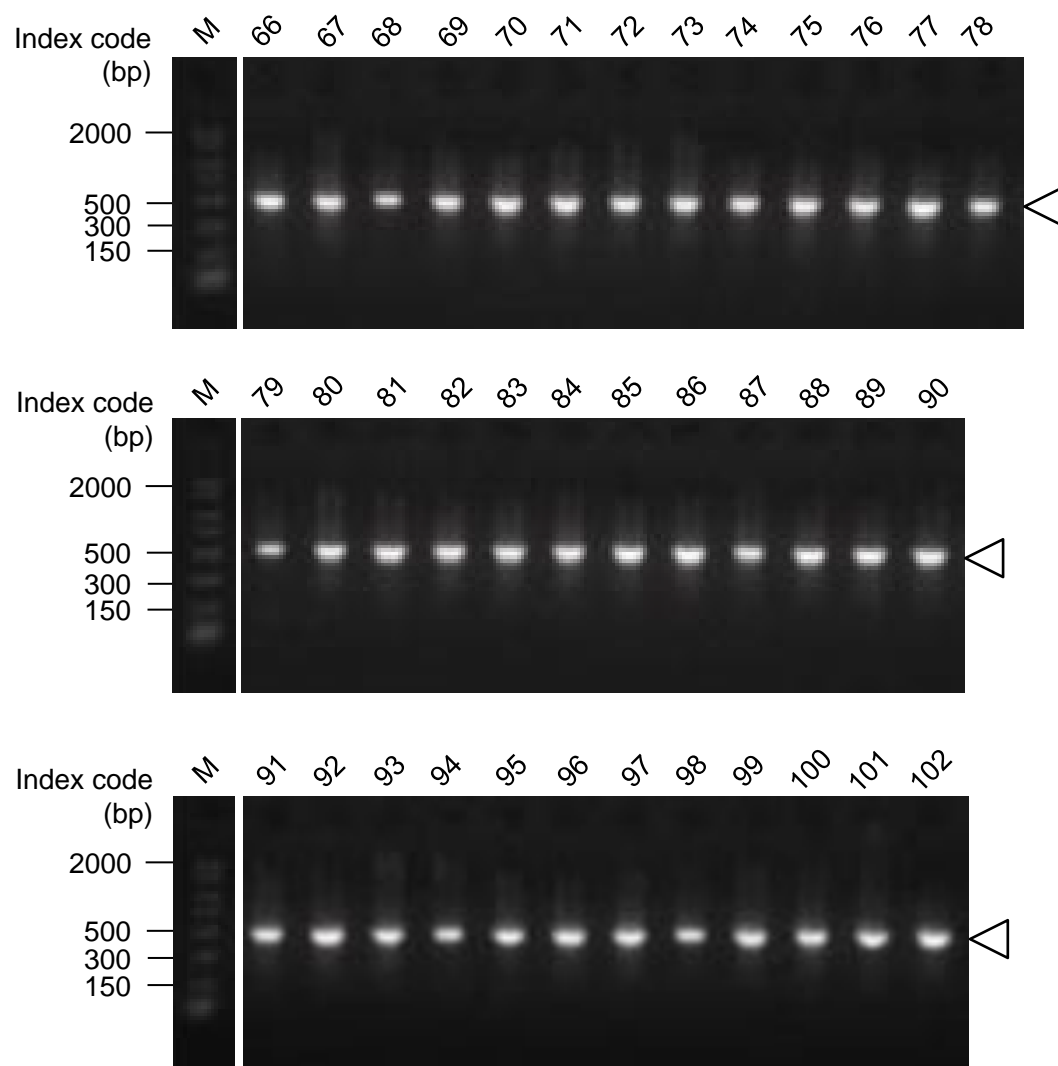




Index	Sample ID	Index	Sample ID	Index	Sample ID	Index	Sample ID
1	00001	31	00014	61	00034	91	00007
2	00002	32	00021	62	00041	92	00008
3	00009	33	00022	63	00042	93	00015
4	00010	34	00029	64	00049	94	00016
5	00017	35	00030	65	00050	95	00023
6	00018	36	00037	66	00003	96	00024
7	00025	37	00038	67	00004	97	00031
8	00026	38	00045	68	00011	98	00032
9	00033	39	00046	69	00012	99	00039
10	00034	40	00007	70	00019	100	00040
11	00041	41	00008	71	00020	101	00047
12	00042	42	00015	72	00027	102	00048
13	00049	43	00016	73	00028		
14	00050	44	00023	74	00035		
15	00003	45	00024	75	00036		
16	00004	46	00031	76	00043		
17	00011	47	00032	77	00044		
18	00012	48	00039	78	00051		
19	00019	49	00040	79	00005		
20	00020	50	00047	80	00006		
21	00027	51	00048	81	00013		
22	00028	52	00001	82	00014		
23	00035	53	00002	83	00021		
24	00036	54	00009	84	00022		
25	00043	55	00010	85	00029		
26	00044	56	00017	86	00030		
27	00051	57	00018	87	00037		
28	00005	58	00025	88	00038		
29	00006	59	00026	89	00045		
30	00013	60	00033	90	00046		

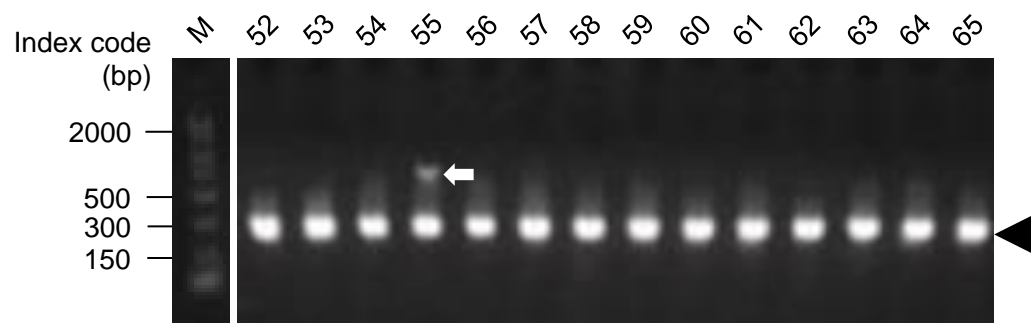
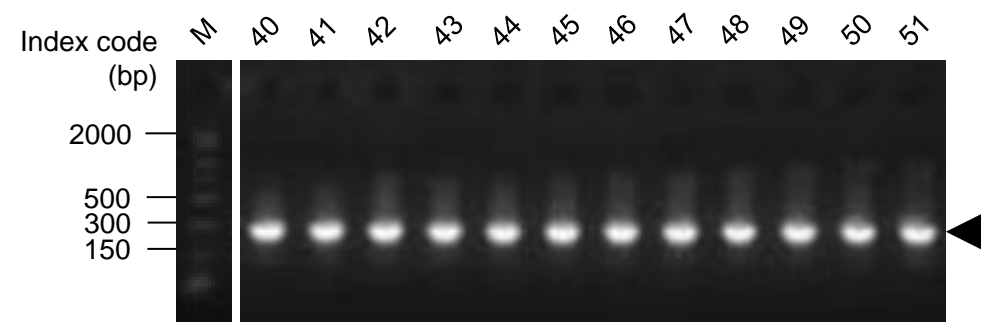
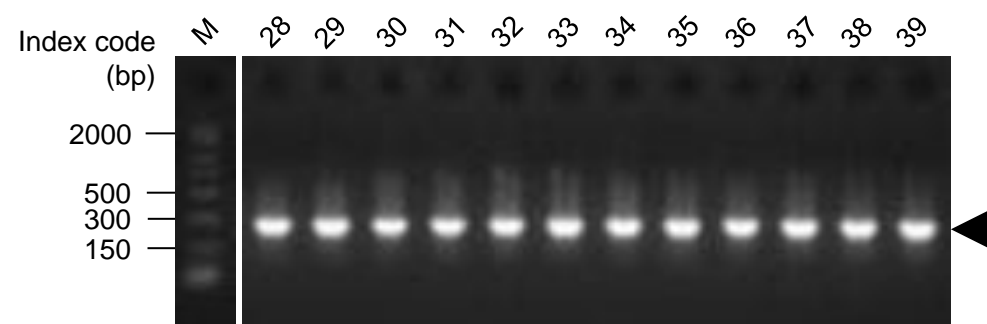
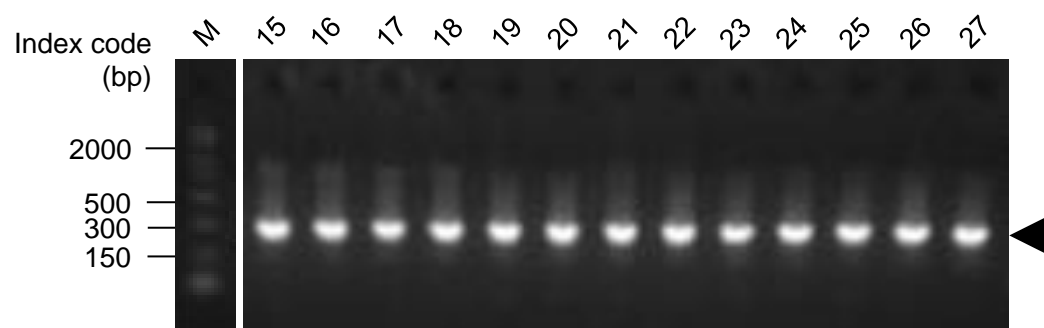
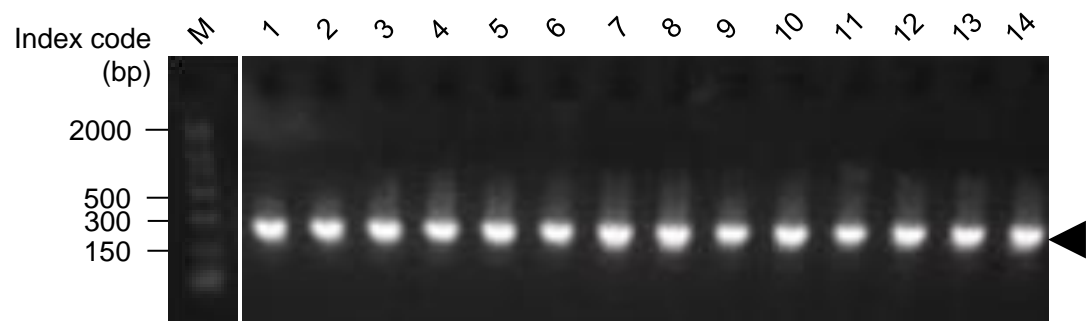
Figure S2. Electrophoresis of genomic DNA extracted from blood and saliva.
Index 1–51: genomic DNA from blood samples; index 52–102: genomic DNA from saliva samples; white arrowheads: genomic DNA (>23 kb); M: DNA marker.

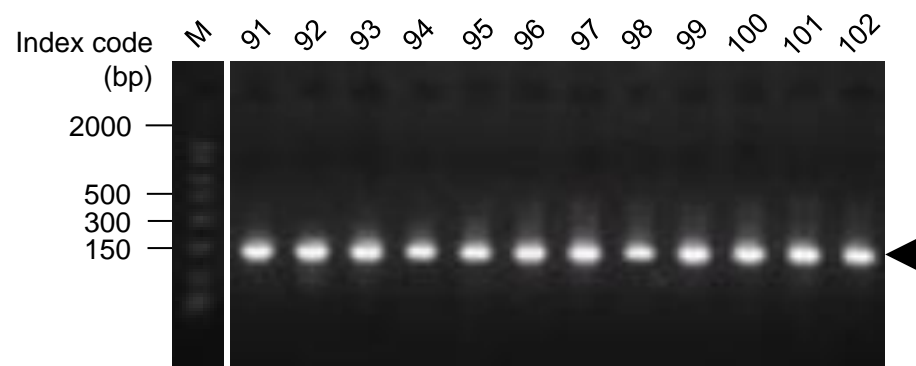
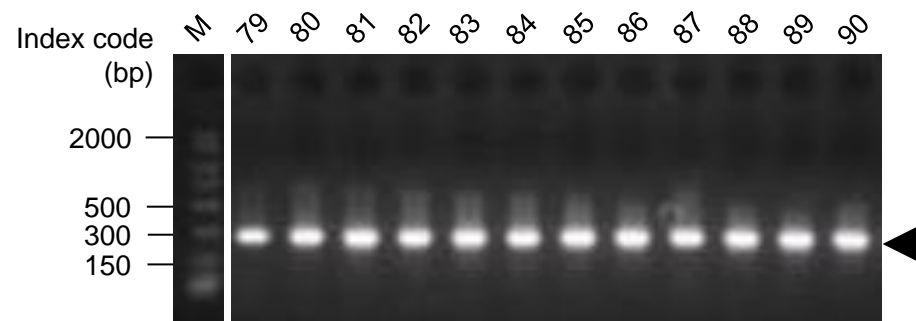
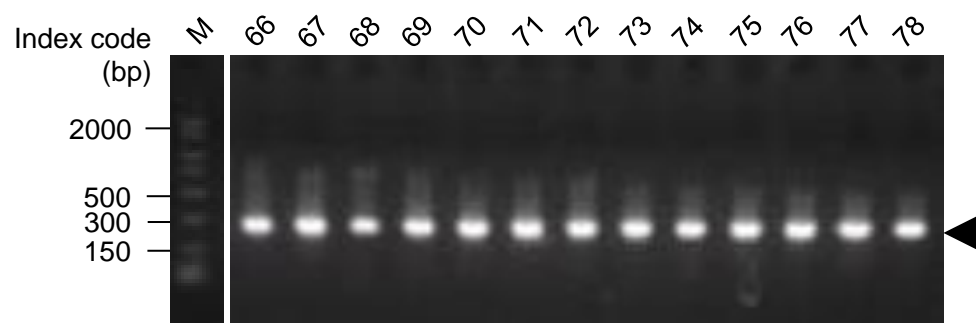




Index	Sample ID	Index	Sample ID	Index	Sample ID	Index	Sample ID
1	00001	31	00014	61	00034	91	00007
2	00002	32	00021	62	00041	92	00008
3	00009	33	00022	63	00042	93	00015
4	00010	34	00029	64	00049	94	00016
5	00017	35	00030	65	00050	95	00023
6	00018	36	00037	66	00003	96	00024
7	00025	37	00038	67	00004	97	00031
8	00026	38	00045	68	00011	98	00032
9	00033	39	00046	69	00012	99	00039
10	00034	40	00007	70	00019	100	00040
11	00041	41	00008	71	00020	101	00047
12	00042	42	00015	72	00027	102	00048
13	00049	43	00016	73	00028		
14	00050	44	00023	74	00035		
15	00003	45	00024	75	00036		
16	00004	46	00031	76	00043		
17	00011	47	00032	77	00044		
18	00012	48	00039	78	00051		
19	00019	49	00040	79	00005		
20	00020	50	00047	80	00006		
21	00027	51	00048	81	00013		
22	00028	52	00001	82	00014		
23	00035	53	00002	83	00021		
24	00036	54	00009	84	00022		
25	00043	55	00010	85	00029		
26	00044	56	00017	86	00030		
27	00051	57	00018	87	00037		
28	00005	58	00025	88	00038		
29	00006	59	00026	89	00045		
30	00013	60	00033	90	00046		

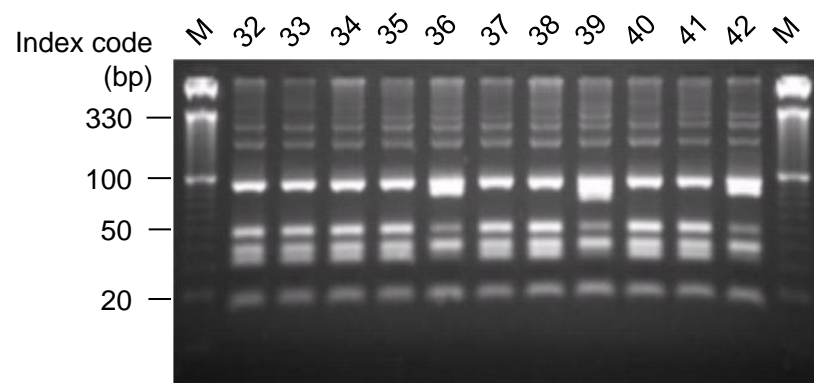
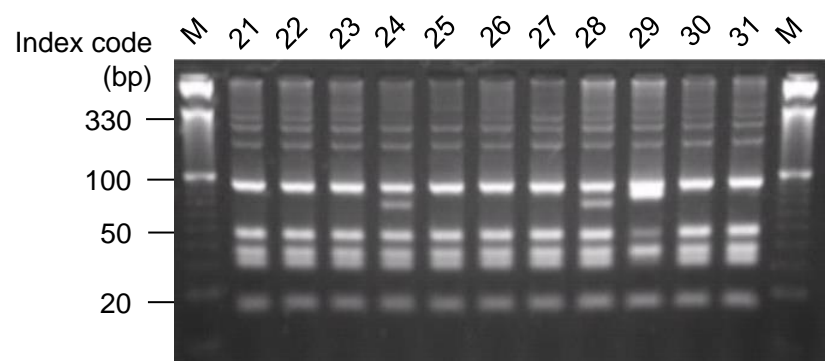
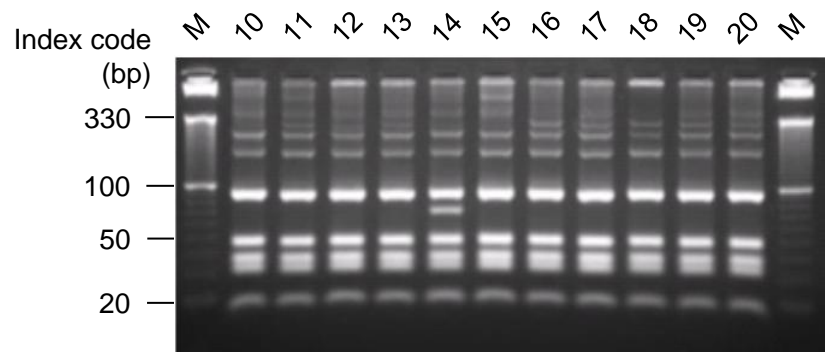
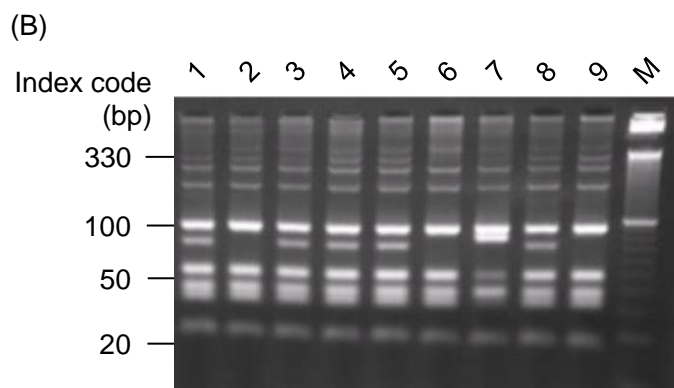
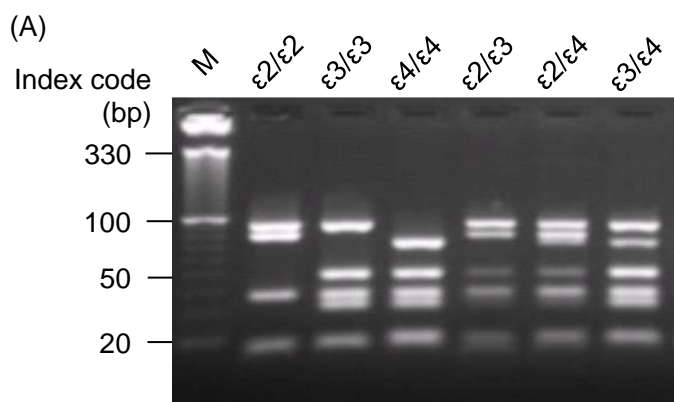
Figure S3. Electrophoresis image of PCR products provided for genotyping by Sanger sequencing. Index 1–51: genomic DNA from blood samples; index 52–102: genomic DNA from saliva samples; white arrowheads: PCR products (452 bp); M: DNA marker.

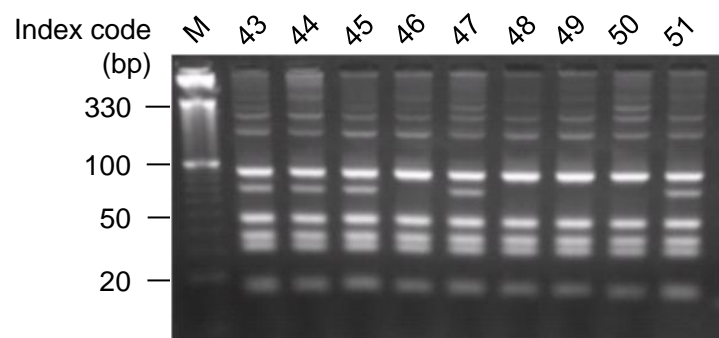




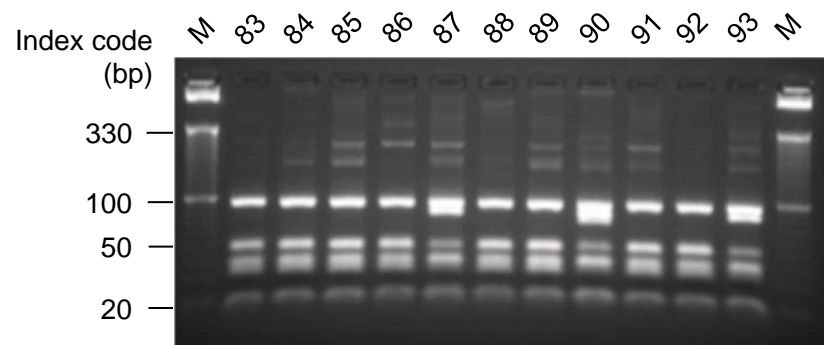
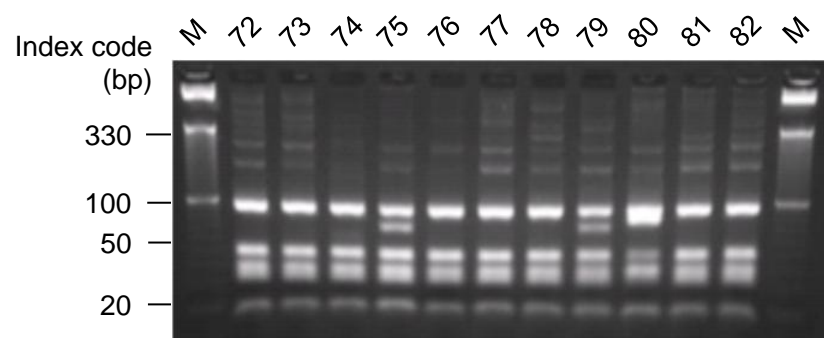
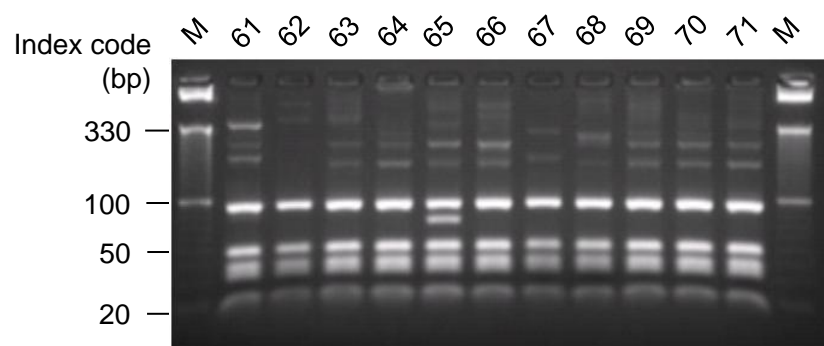
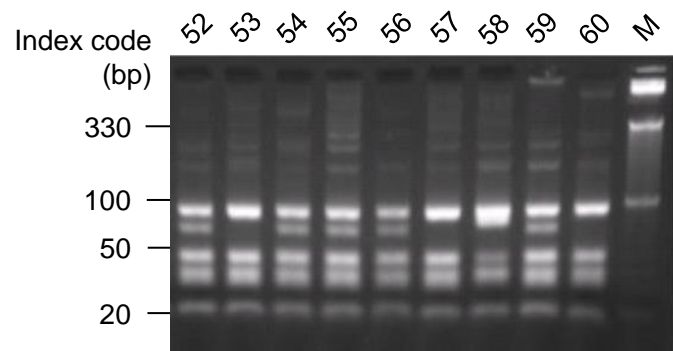
Index	Sample ID	Index	Sample ID	Index	Sample ID	Index	Sample ID
1	00001	31	00014	61	00034	91	00007
2	00002	32	00021	62	00041	92	00008
3	00009	33	00022	63	00042	93	00015
4	00010	34	00029	64	00049	94	00016
5	00017	35	00030	65	00050	95	00023
6	00018	36	00037	66	00003	96	00024
7	00025	37	00038	67	00004	97	00031
8	00026	38	00045	68	00011	98	00032
9	00033	39	00046	69	00012	99	00039
10	00034	40	00007	70	00019	100	00040
11	00041	41	00008	71	00020	101	00047
12	00042	42	00015	72	00027	102	00048
13	00049	43	00016	73	00028		
14	00050	44	00023	74	00035		
15	00003	45	00024	75	00036		
16	00004	46	00031	76	00043		
17	00011	47	00032	77	00044		
18	00012	48	00039	78	00051		
19	00019	49	00040	79	00005		
20	00020	50	00047	80	00006		
21	00027	51	00048	81	00013		
22	00028	52	00001	82	00014		
23	00035	53	00002	83	00021		
24	00036	54	00009	84	00022		
25	00043	55	00010	85	00029		
26	00044	56	00017	86	00030		
27	00051	57	00018	87	00037		
28	00005	58	00025	88	00038		
29	00006	59	00026	89	00045		
30	00013	60	00033	90	00046		

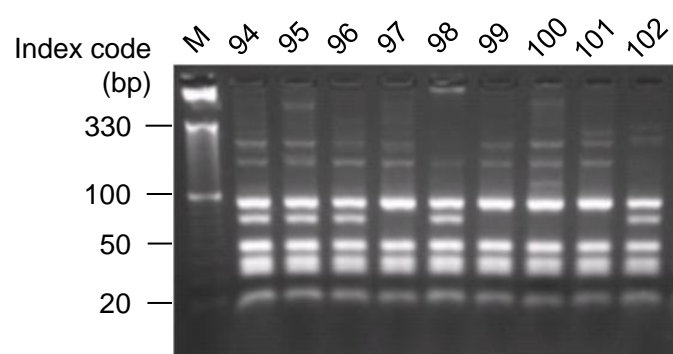
Figure S4. Electrophoresis image of PCR products provided for genotyping by RFLP method. Index 1–51: genomic DNA from blood samples; index 52–102: genomic DNA from saliva samples; black arrowheads: PCR products (244 bp); M: DNA marker. In index 55 (saliva, Sample ID: 00010), an extra band of 500 bp (white arrow) was also detected.





(C)





Index	Sample ID	Index	Sample ID	Index	Sample ID	Index	Sample ID
1	00001	31	00031	61	00010	91	00040
2	00002	32	00032	62	00011	92	00041
3	00003	33	00033	63	00012	93	00042
4	00004	34	00034	64	00013	94	00043
5	00005	35	00035	65	00014	95	00044
6	00006	36	00036	66	00015	96	00045
7	00007	37	00037	67	00016	97	00046
8	00008	38	00038	68	00017	98	00047
9	00009	39	00039	69	00018	99	00048
10	00010	40	00040	70	00019	100	00049
11	00011	41	00041	71	00020	101	00050
12	00012	42	00042	72	00021	102	00051
13	00013	43	00043	73	00022		
14	00014	44	00044	74	00023		
15	00015	45	00045	75	00024		
16	00016	46	00046	76	00025		
17	00017	47	00047	77	00026		
18	00018	48	00048	78	00027		
19	00019	49	00049	79	00028		
20	00020	50	00050	80	00029		
21	00021	51	00051	81	00030		
22	00022	52	00001	82	00031		
23	00023	53	00002	83	00032		
24	00024	54	00003	84	00033		
25	00025	55	00004	85	00034		
26	00026	56	00005	86	00035		
27	00027	57	00006	87	00036		
28	00028	58	00007	88	00037		
29	00029	59	00008	89	00038		
30	00030	60	00009	90	00039		

Figure S5. Genotyping results of the ApoE gene by RFLP method.

A: six breaking patterns of ApoE genotypes after cutting the ApoE gene by Hha I, B: results of RFLP analysis using blood genomic DNA (Index 1–51), C: results of RFLP analysis using saliva genomic DNA (Index 52–102).