

Stag Beetle Knife: A Promising Endoscopic Approach for Zenker's Diverticulum Treatment

Mannat K Bhatia^{1*}, Oghenfejiro Ogor¹, Panagiotis G Doukas¹, Mehar K Bhatia², Sotirios Doukas³, Babu P Mohan³ and Arkady Broder³

¹Department of Internal Medicine, Saint Peter's University Hospital, New Brunswick, USA

²Department of Internal Medicine, Government Medical College, Punjab, India

³Department of Gastroenterology, Saint Peter's University Hospital, New Brunswick, USA

*Corresponding author: Mannat K Bhatia, Department of Internal Medicine, Saint Peter's University Hospital, New Brunswick, USA; E-mail: bhatiaamannat@gmail.com

Received: 18-April-2024, Manuscript No. JGDS-24-132593; Editor assigned: 22-April-2024, PreQC No. JGDS-24-132593 (PQ); Reviewed: 08-May-2024, QC No. JGDS-24-132593; Revised: 06-February-2025, Manuscript No. JGDS-24-132593 (R); Published: 13-February-2025, DOI: 10.4172/2161-069X.1000850

Citation: Bhatia MK, Ogor O, Doukas PG, Bhatia MK, Doukas S, et al. (2025) Stag Beetle Knife: A Promising Endoscopic Approach for Zenker's Diverticulum Treatment. J Gastrointest Dig Syst 15:850.

Copyright: © 2025 Bhatia MK, et al. This is an open-access article distributed under the terms of the Creative Commons Attribution License, which permits unrestricted use, distribution and reproduction in any medium, provided the original author and source are credited.

Supplementary Figures

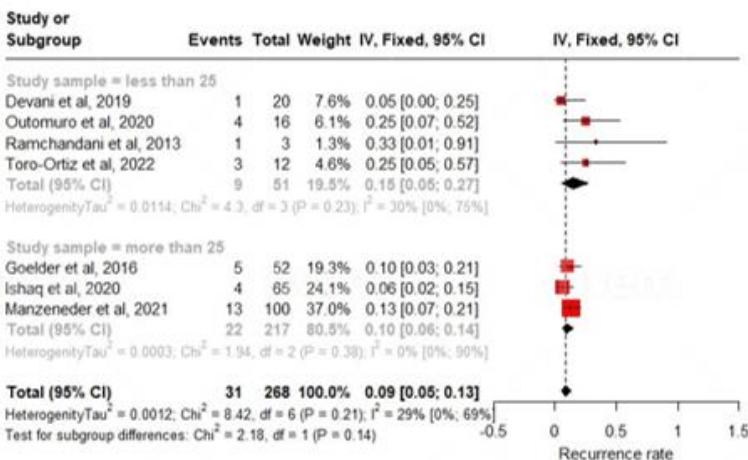
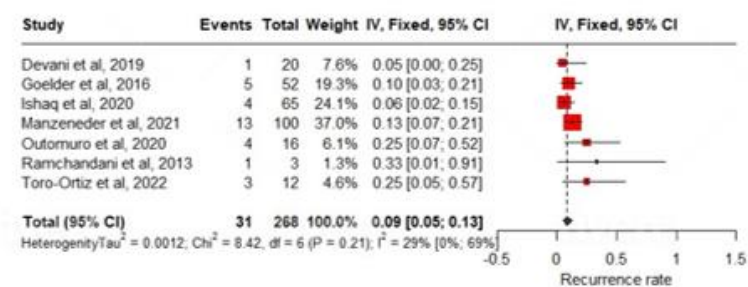


Figure 1: Forest plot of random effect of (a) complication rate, (b) Subgroup analysis of complication rate.

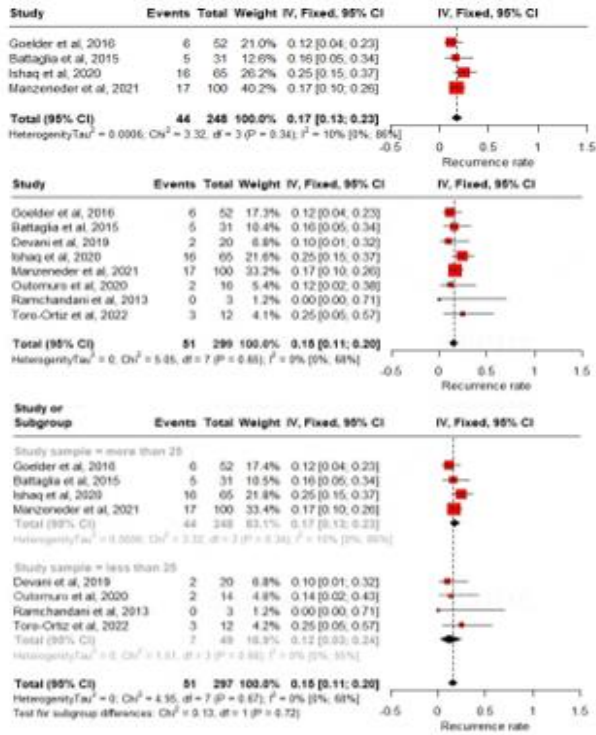


Figure 2: Forest plot of random effect of (a) recurrence rate _more than 25, (b) overall recurrence rate, and (c) subgroup analysis of recurrence rate.

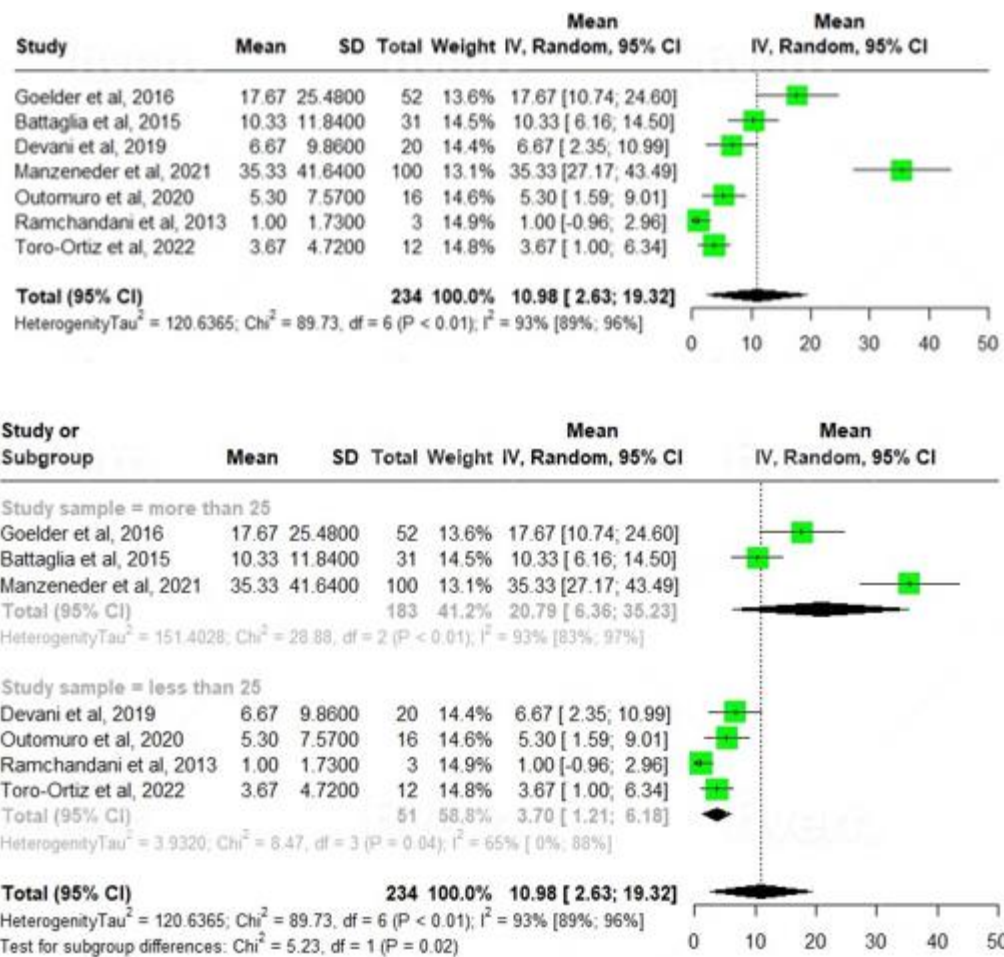


Figure 3: Forest plot of random effect of (a) session number for treating ZD, (b) subgroup analysis of session number.

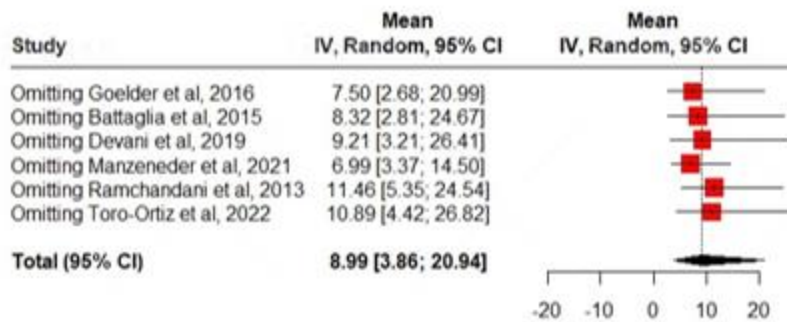
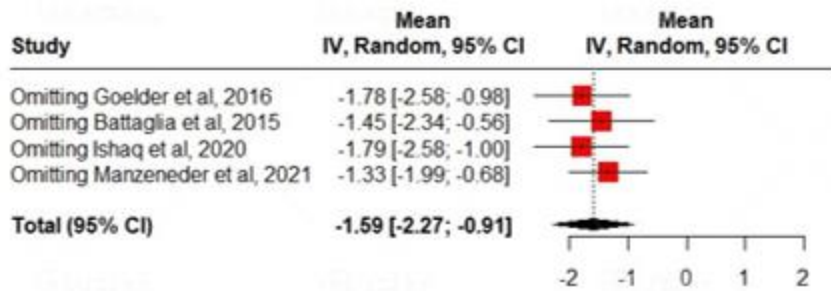
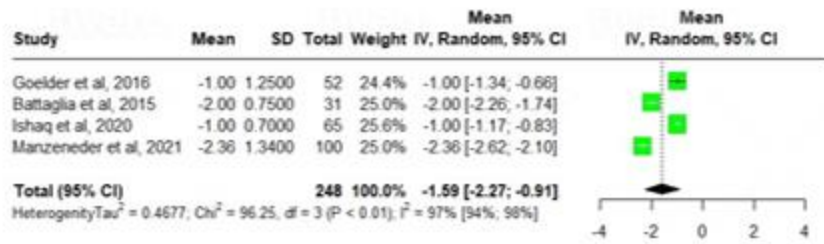


Figure 4: Forest plot of random effect model of (a) dysphagia score all for more than 25, (b) dysphagia score leave one out (c) leave one out meta-analysis session number.

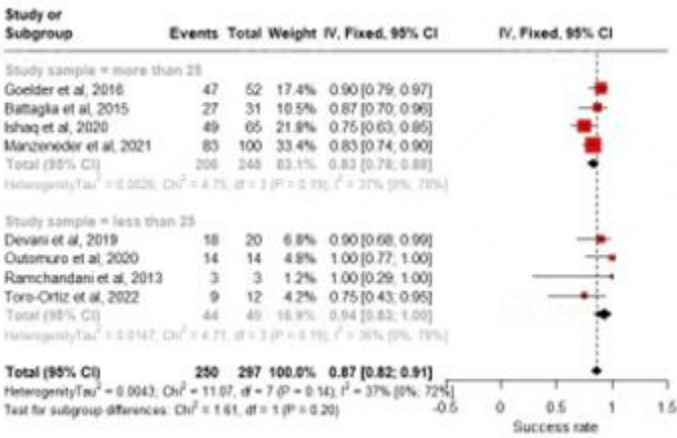
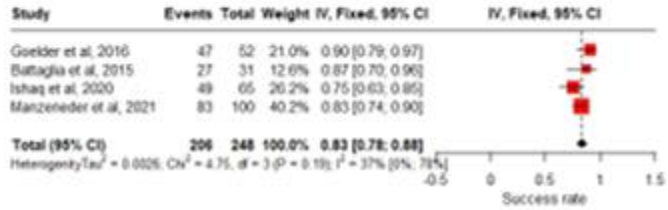
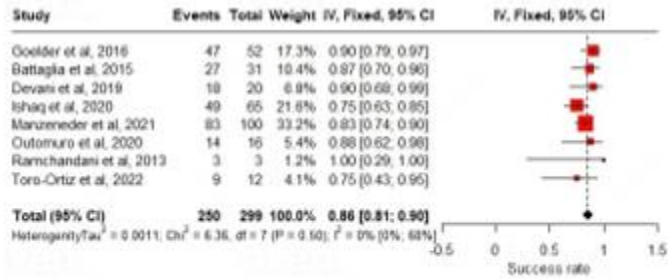


Figure 5: Forest plot of random effect of (a) overall success rate, (b) success rate more than 25, (c) subgroup analysis of success rate.